

—FIELDSTONE—
SUMMIT
 AT SCRIPPS RANCH

HomeFitting Gives You the Power of Choice!

More Choices Used to be Made For You!

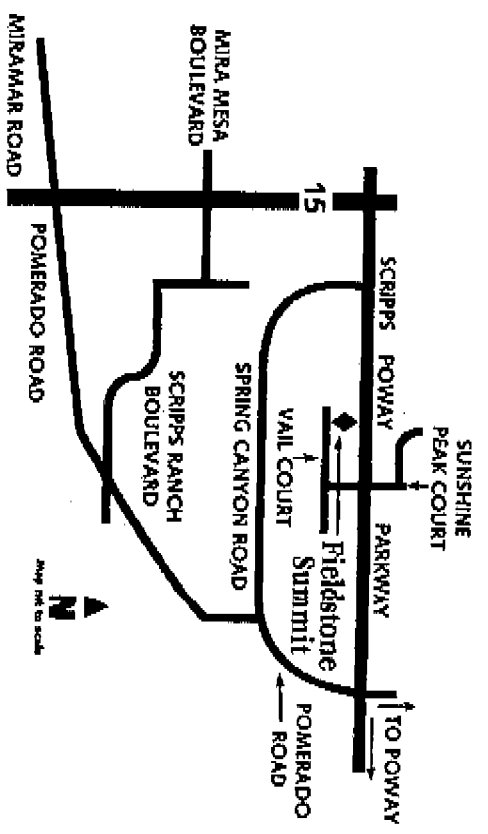
Until now there has been no flexibility in the selection of your home or lot. Homebuilders decided which features would best meet your needs, and that color scheme reflected your personal taste.

Now the Choice is Yours!

Recognizing your desire for individuality in your own home, we're now putting really important decisions in *your* hands.

Allowing you to put the home of your dreams on your dream lot.

Providing a full range of no-cost choices and custom opportunities.



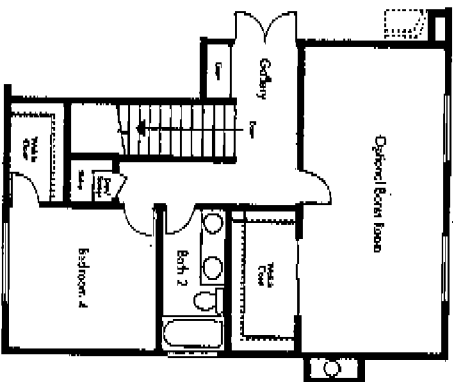
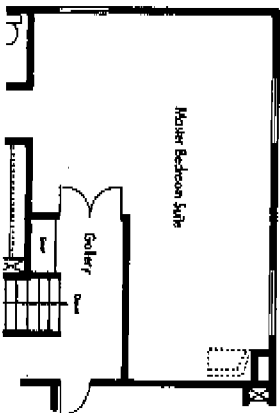
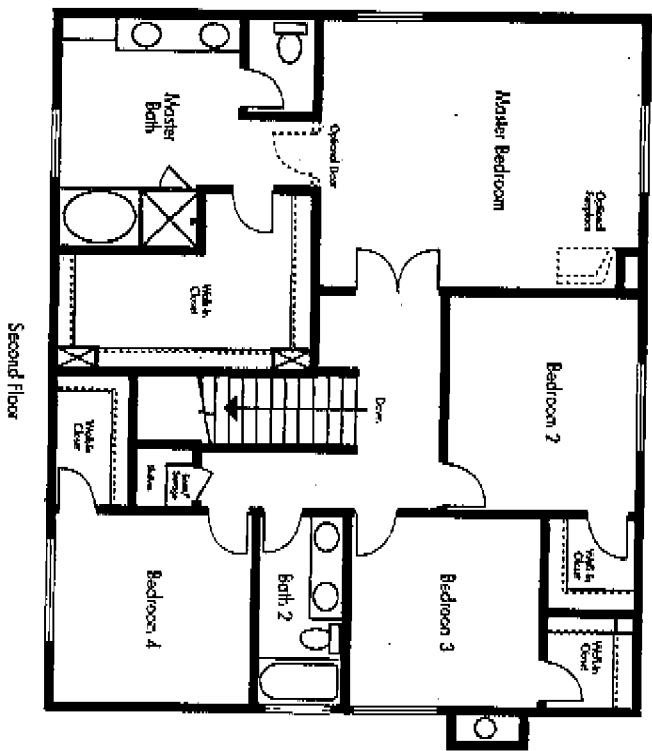
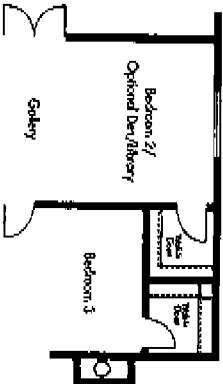
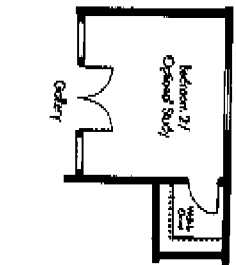
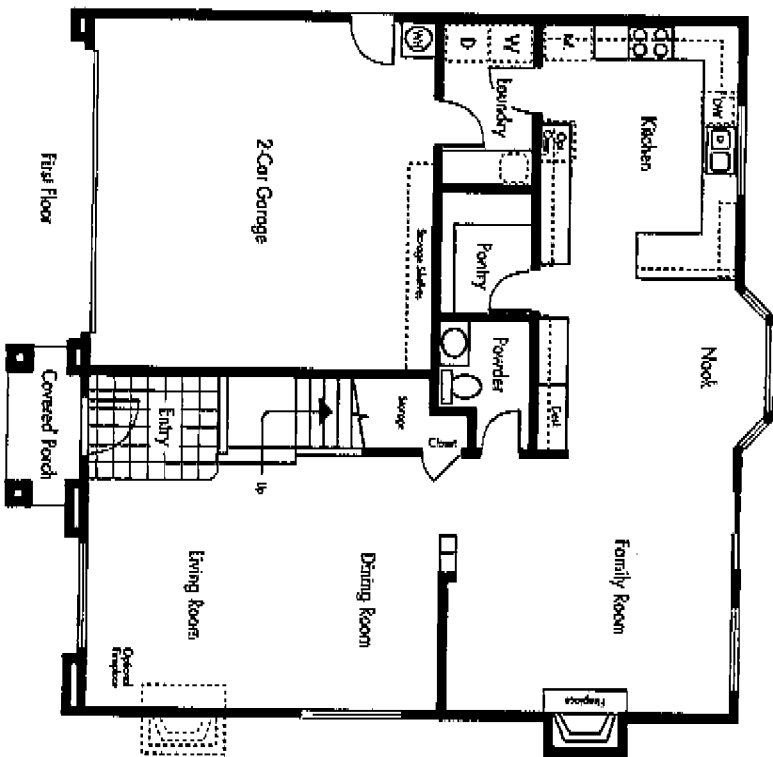
Fieldstone Summit
 11660 Vail Court
 San Diego, CA 92131
 Phone: 619/566-9840 • Fax: 619/566-9842

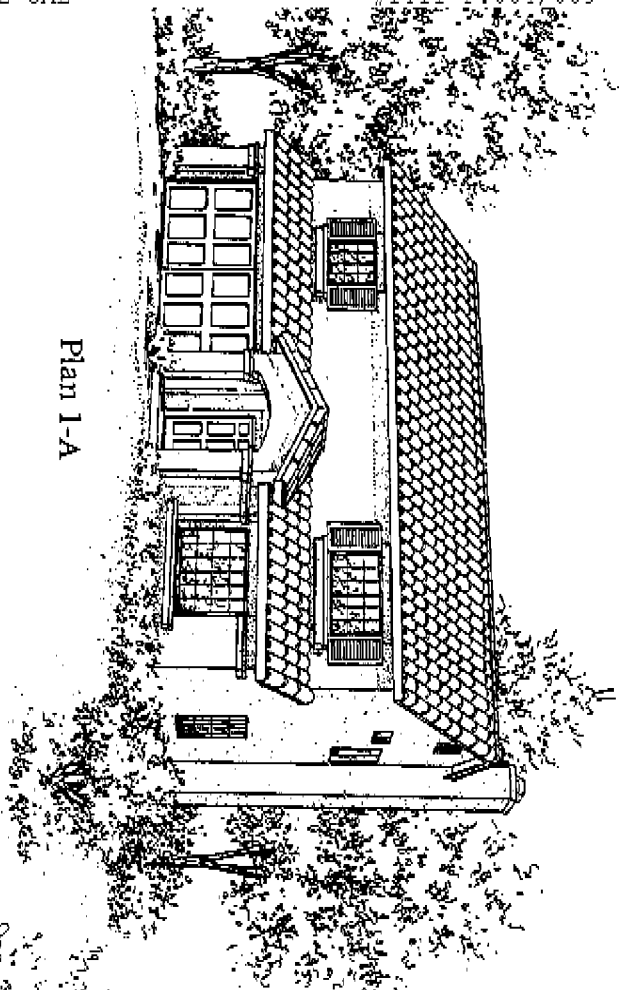


THE CRESTWOOD VILLAGE CENTER

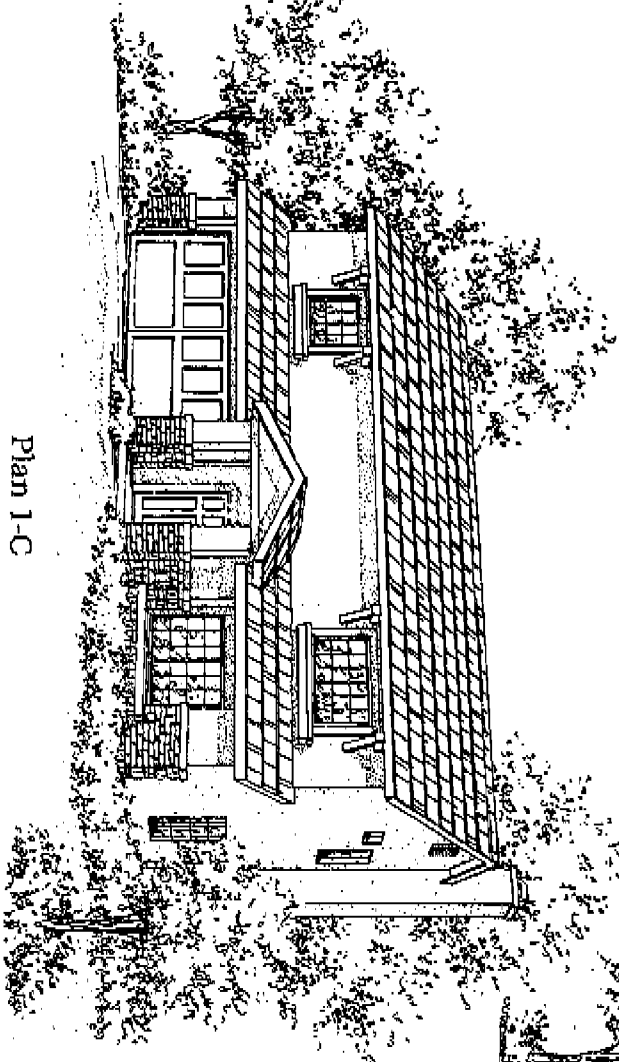
Fieldstone Summit - Plan 1

2,483 Square Feet

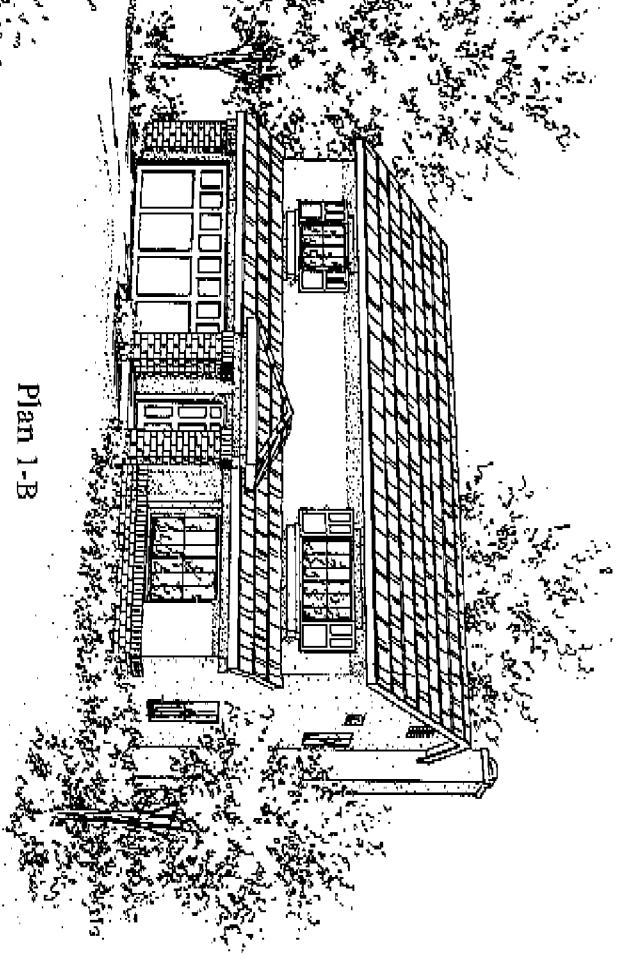




Plan 1-A



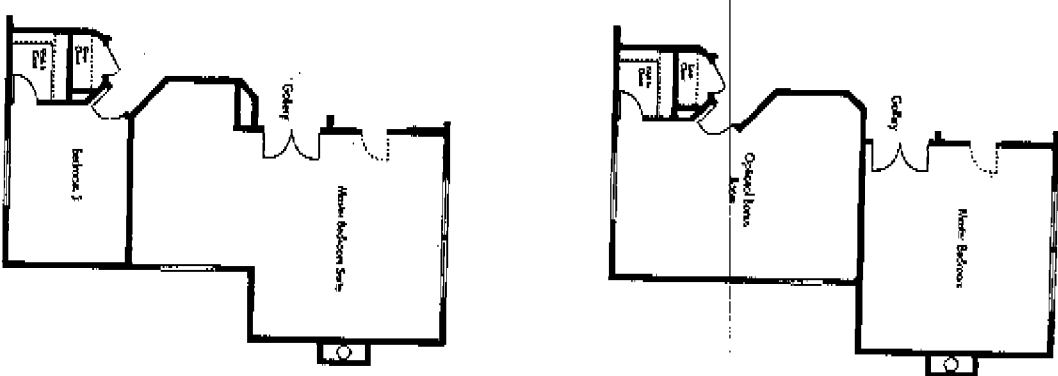
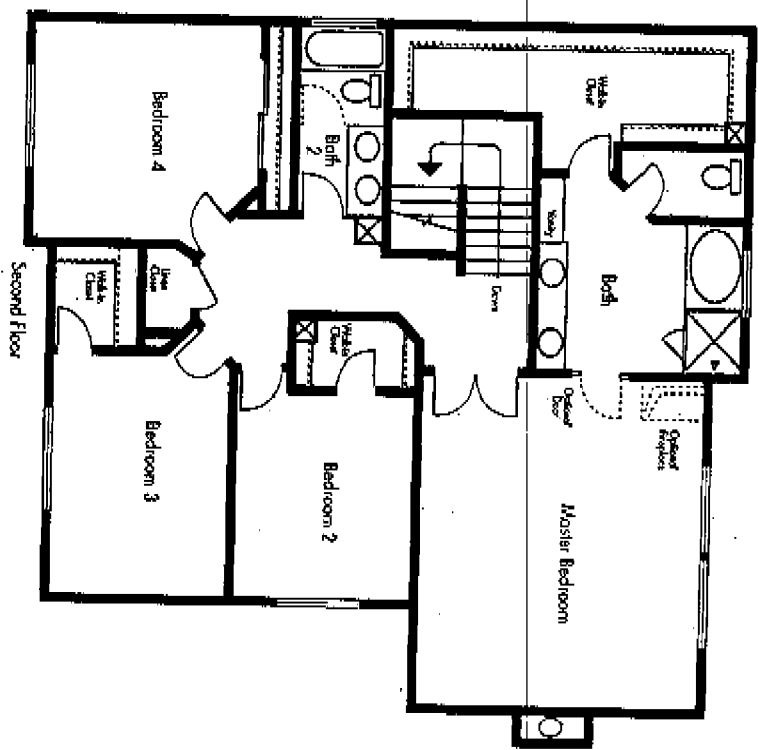
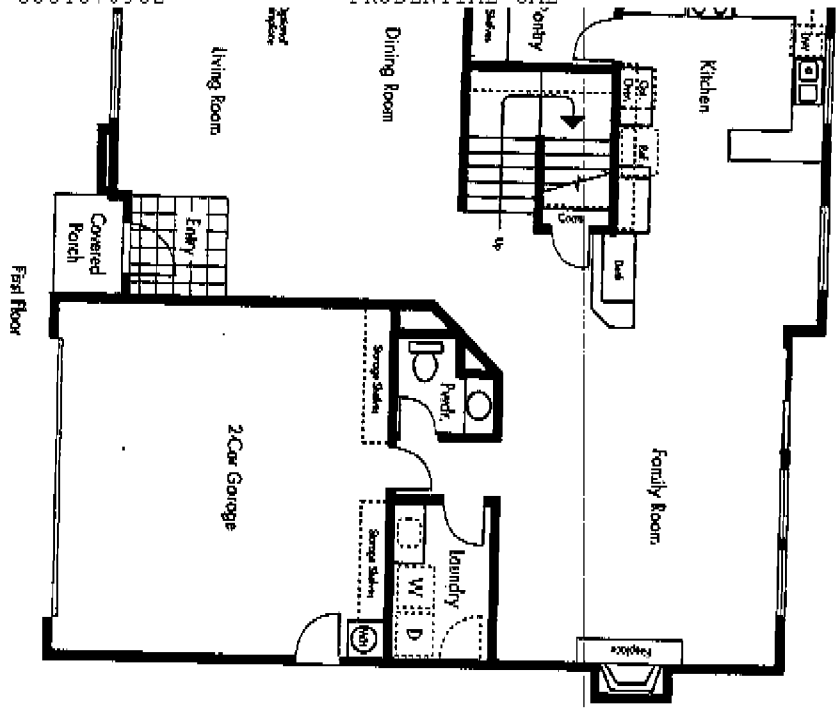
Plan 1-C

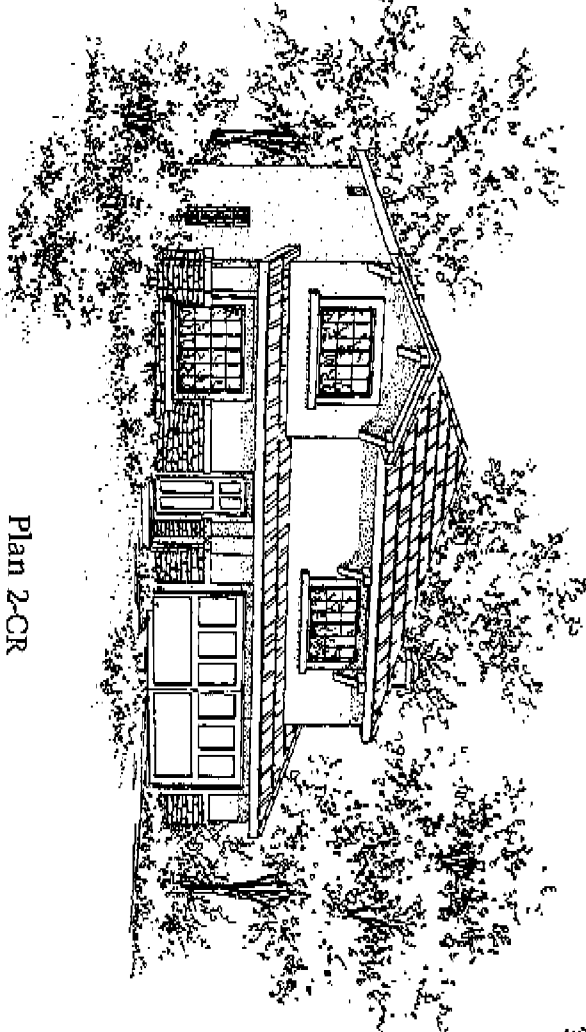


Plan 1-B

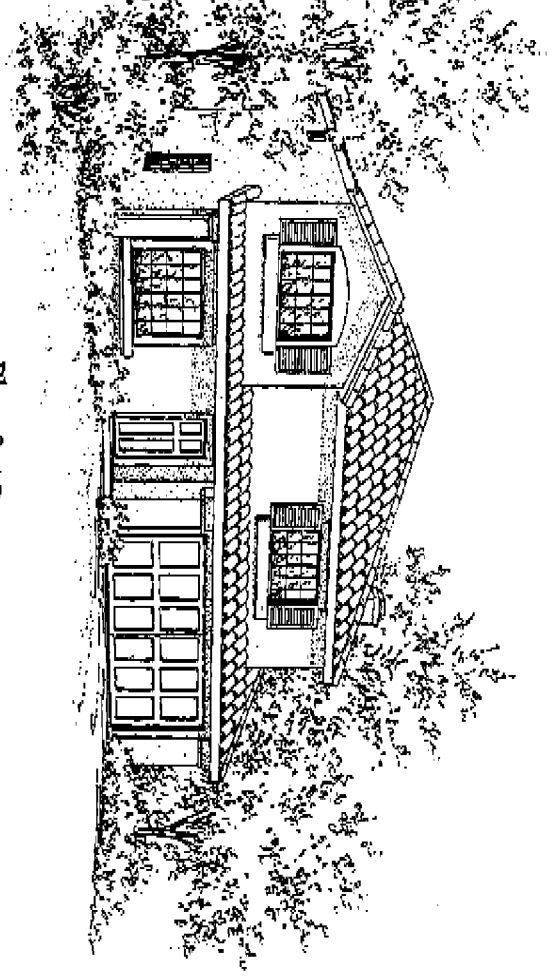
Fieldstone Summit - Plan 2

2,764 Square Feet

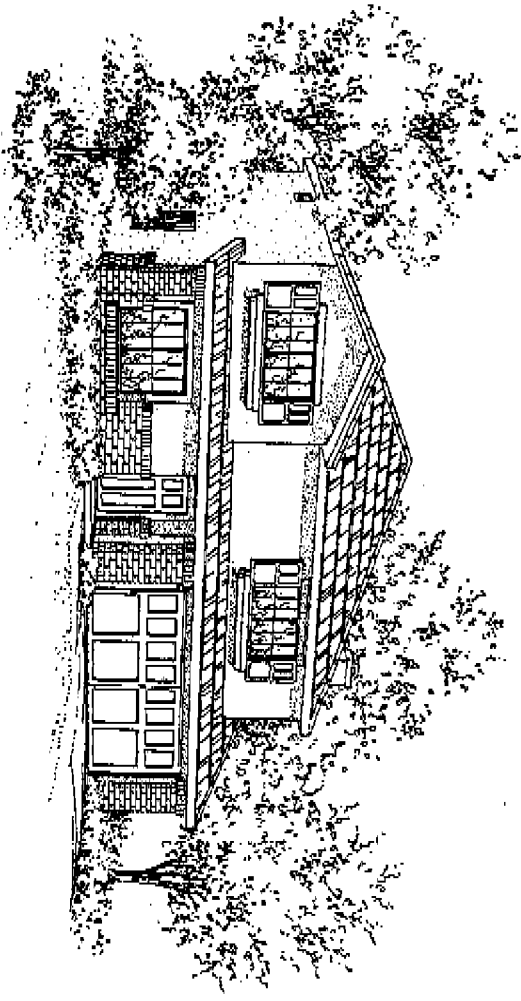




Plan 2-CR



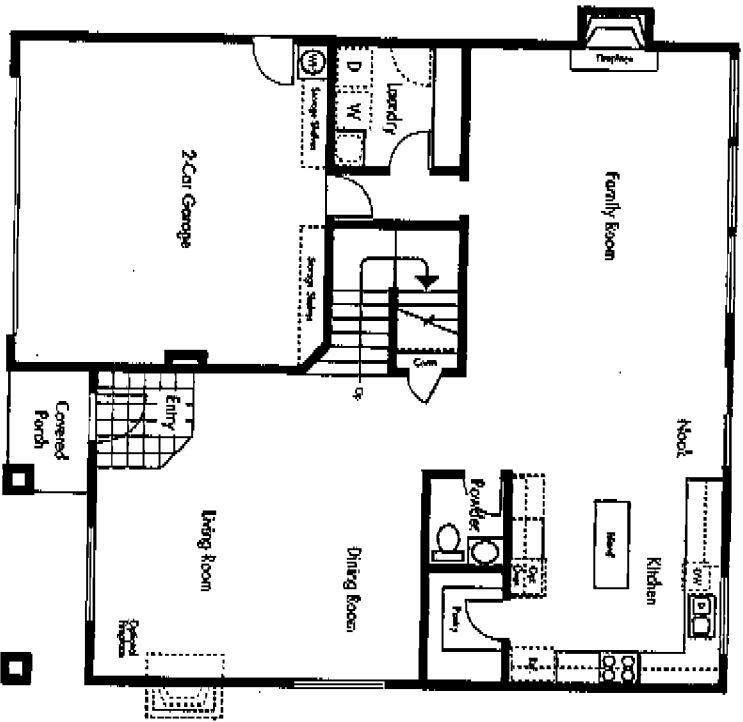
Plan 2-AR



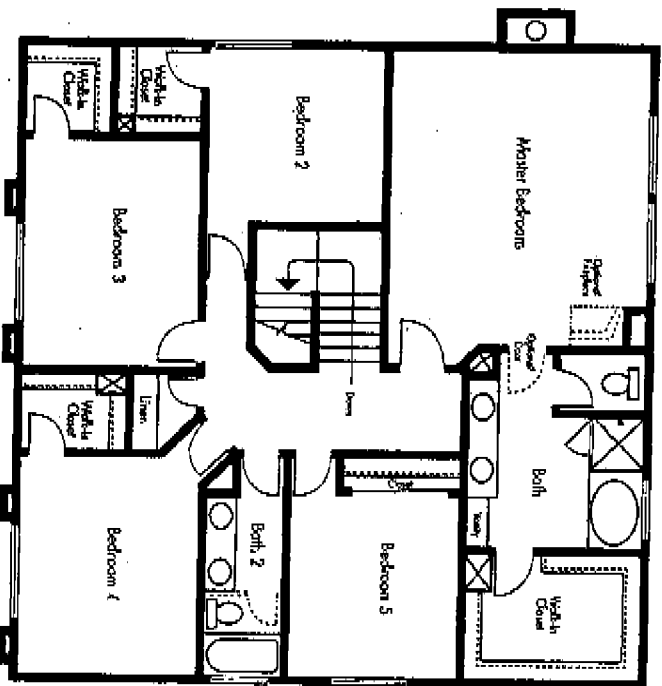
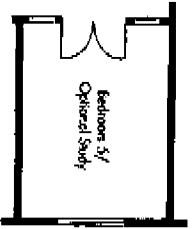
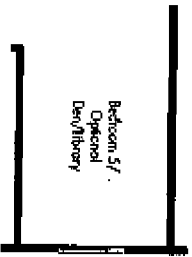
Plan 2-BR

Fieldstone Summit - Plan 3

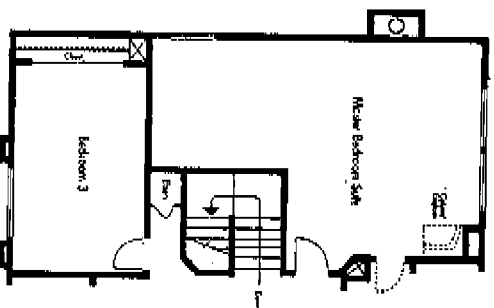
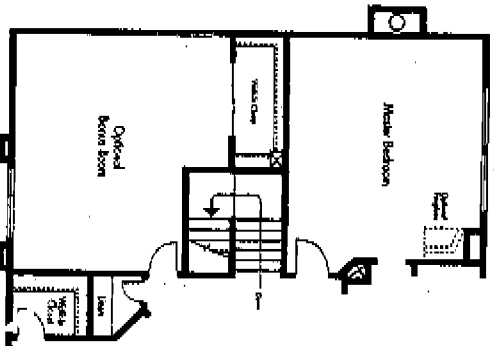
2,872 Square Feet

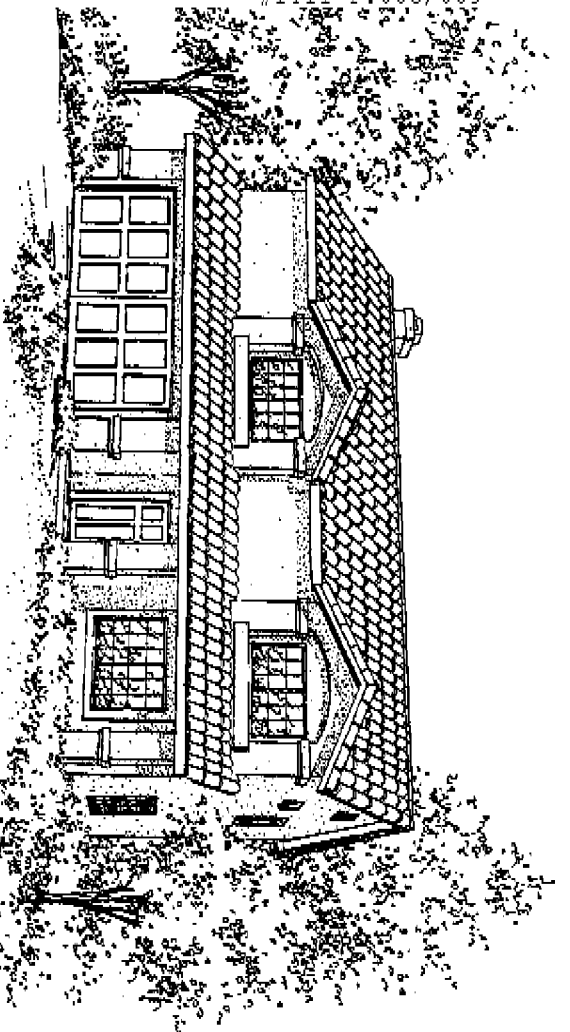


First Floor

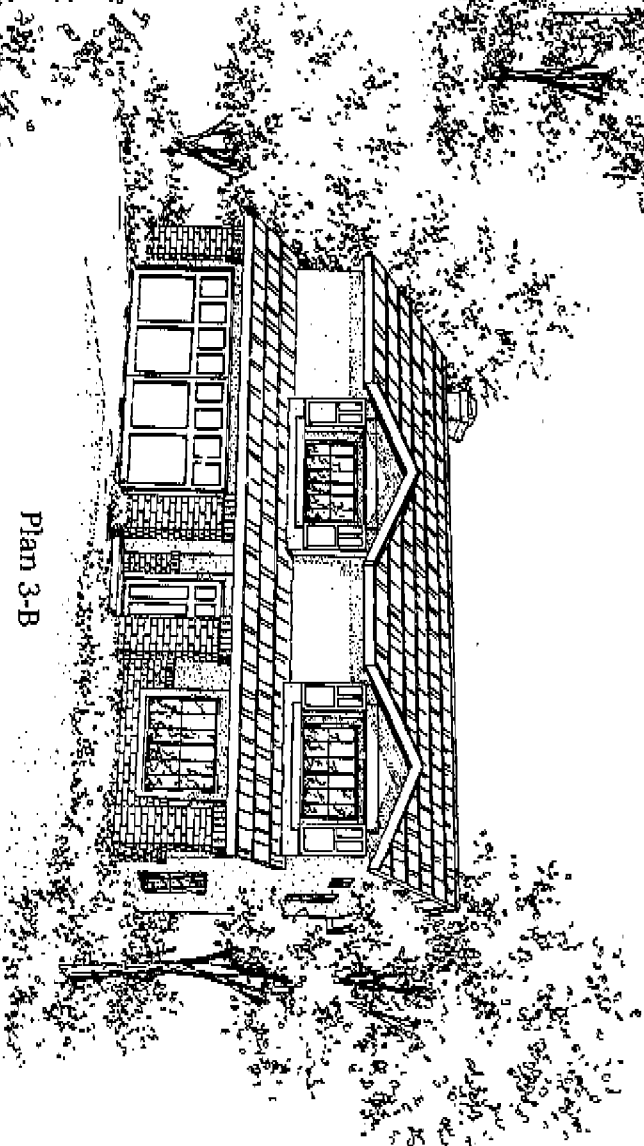


Second Floor

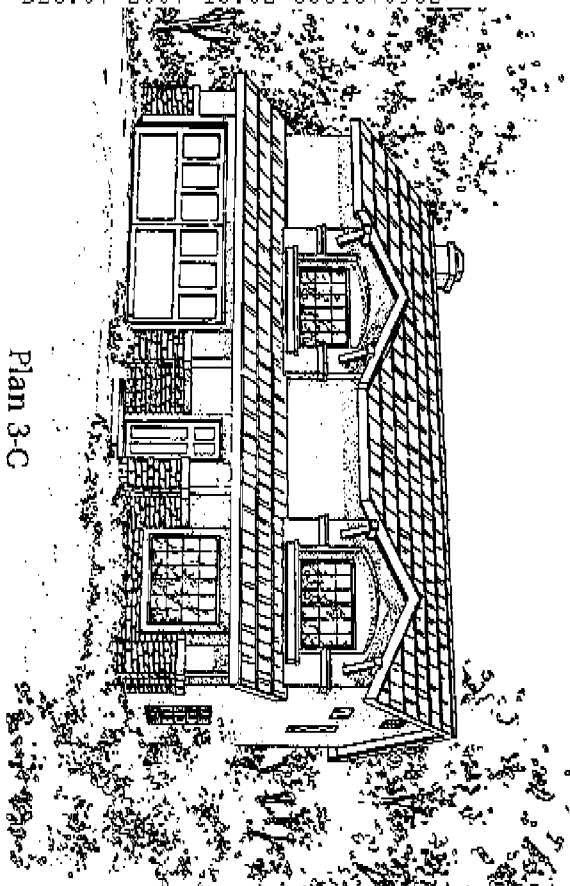




Plan 3-A



Plan 3-B



Plan 3-C

Fieldstone Summit Features

Exterior Architectural Amenities

- Choice of floor plans, elevations & exterior colors on the lot of your choice
- Nine distinctive elevations
- Fire-resistant concrete tile roofing
- Dramatic roof lines
- Attached two-car garage
- Wired for electric garage door openers
- Inset antique brass entry door hardware

Luxury Master Bedrooms

- Spacious walk-in closets
- Marbled marble counter with dual sinks
- Separate oval tub and shower
- Giant Moen dual-handle chrome faucets
- Compartmentalized water closets
- Decorator bar lighting
- Built-in vanity

Spacious Gourmet Kitchens

- Hand set ceramic tile countertops
- Black kitchen cabinets with roller guides and white finished interiors
- Generous walk-in pantries
- Whirlpool multi-cycle dishwasher
- Refrigerator area plumbed for icemaker
- Recessed ceiling lighting
- Bright airy breakfast nooks with built-in desks (plans 1&2)
- Center island (plan 3)

Energy/Environmentally Efficient Features

- Dual-glazed windows
- Forced-air heating with programmable night set-thermostat
- Heat-saving glass fireplace doors
- Energy-efficient water heater with glass lining
- R-19 insulation in living space ceilings
- R-13 insulation in exterior walls
- Low-flow toilets
- Low-flow shower heads
- Polycell weatherproofing of all exterior openings
- Copper water system throughout

Elegant Interior Design

- Custom ceramic tile entry
- Wood burning fireplace with mantle in family room with gas log-lighter outlet
- Spacious interior laundry with gas hook up
- Cultured marble countertops in baths and laundry room
- Sizable secondary bedrooms with roomy walk-in closets
- Dual sinks in secondary bath
- Large, livable family room

Additional Included Features

- Silent Floor™ truss joist system
- Designer-selected wall-to-wall carpeting throughout living area
- Easy-care, no-wax vinyl flooring in kitchen, bath and laundry room
- Prepped for air conditioning
- Prewired for cable television and telephones
- 5-line phone service prewired for home office use
- Complete rear and side yard fencing
- Advanced warning smoke detectors in all bedrooms
- Pressure balanced tub & shower valves

Community Amenities

- Beautiful Miramar Lake
- Several Community Parks and Ponds
- New Lakeview Park
- New 18-acre Spring Canyon Park
- Scrapps Ranch Swim & Raquet Club (Membership available)
- Youth and Adult Sports Leagues
- Scrapps Ranch High School
- Robert E. Dingman Elementary School
- Community Library
- *Marshall Middle School (1998) (*Future)

HomeFitting Options

- Upgraded appliances by Whirlpool and KitchenAid
- Master bedroom suite (all plans)
- Study option (plans 1&3)
- Bonus room (all plans)
- Den/library option (plans 1&3)
- Central air conditioning
- Garage door opener
- Security system
- Intercom system
- Central vacuum
- Corinthian, granite or decorator ceramic tile countertops
- Secondary bath tub enclosures
- Whirlpool refrigerator, washer and/or dryer
- Fireplaces in living room and master bedroom
- Lasco jetted tub
- Gas stub for BBQ in rear yard

◆ Elevation, floor plan, tile colors, paint choices, fireplaces and other options are available prior to construction cut-off dates. See your