

T A P E S T R Y

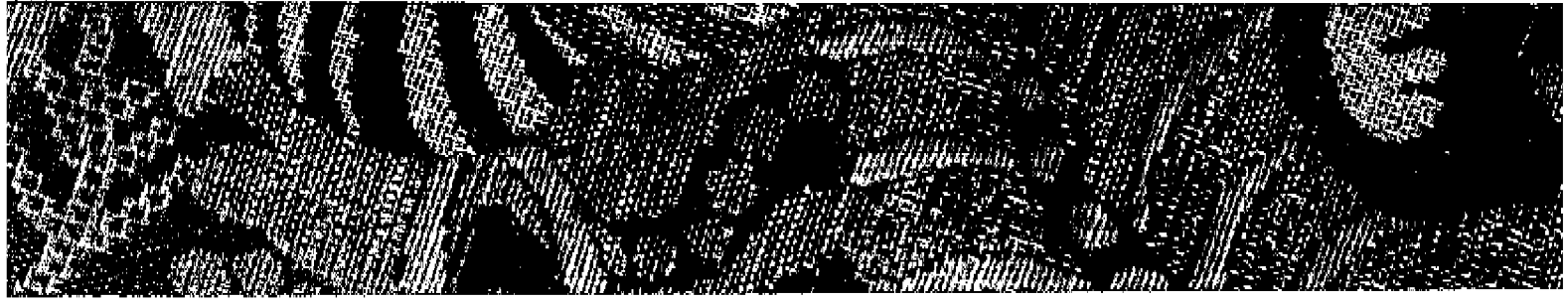
THE FABRIC OF OUR LIVES IS SPUN OF HOPES AND MEMORIES. OF CHERISHED VISIONS, RICH AND REWARDING. TAPESTRY . . . AN ENVIRONMENT WOVEN OF NUANCE AND COLOR WITH BOLD TEXTURES AND STYLES TASTEFULLY INTER-TWINED. HERE, EACH ANGLE, EVERY LINE IS INTRICATELY ORCHESTRATED. FROM THE GRACEFUL CURVE OF AN ARCH-TOPPED WINDOW TO THE ELEGANCE OF A COLUMNED ENTRYWAY. BRILLIANT THREADS OF BEAUTY BLEND WITH SOFT, GENTLE HUES.

BEHOLD THE ARTISTRY OF TAPESTRY. IN THE GENTLE ARC OF A WINDING STAIRCASE . . . THE

HANDSOME EMBELLISHMENT OF RAILINGS OF WROUGHT IRON . . . THE CONVENIENCE OF A WINDOWED WORKSHOP . . . A PRIVATE SALON FOR MOMENTS OF REFLECTION . . . AND A WARMING HEARTH CASTING THE SOFT EMBERS' GLOW UPON BED AND BATH.

TAPESTRY . . . ENVISIONED WITH IMAGINATION. CRAFTED WITH PATIENCE. EVER-LASTING, EVER-CHANGING. AS INDIVIDUAL AS THE FANCIFUL DREAMS OF THOSE WHO WILL CALL IT HOME.

. . .



A PLACE TO LIVE, WORK & PLAY

RARELY DOES A RESIDENTIAL NEIGHBORHOOD OFFER NATURAL BEAUTY, A CONVENIENT LOCATION, NEARBY EMPLOYMENT AND RECREATIONAL ATTRACTIONS FOR ADULTS AND CHILDREN ALIKE. YOU'LL FIND THEM ALL HERE AT CARMEL MOUNTAIN RANCH.

ENHANCING THE SERENE ROLLING HILLSIDES OF THIS 1,500-ACRE MASTER-PLANNED COMMUNITY IS AN 18-HOLE CHAMPIONSHIP GOLF COURSE THAT WINDS THROUGH THE FOOTHILLS. ADDING TO YOUR PLEASURE ARE THE NEIGHBORHOOD AND COMMUNITY PARKS, MULTI-USE PLAYING FIELDS AND COURTS, HIKING AND JOGGING TRAILS AND PICNIC AND PLAY AREAS.

A MAJOR SHOPPING CENTER, WITH A SUPER-MARKET AND DRUGSTORE, IS A PART OF CARMEL MOUNTAIN RANCH. YOU CAN ALSO LOOK FORWARD TO A HOTEL AND THREE PROPOSED SCHOOLS. AND SERVING YOUR FAMILY'S HEALTH AND SAFETY NEEDS ARE THE NEW SCRIPPS CLINIC AND THE CARMEL MOUNTAIN RANCH FIRE STATION.

IT'S TIME YOU DISCOVERED TAPESTRY AT CARMEL MOUNTAIN RANCH, AN EXTRA-ORDINARY PLACE TO LIVE, WORK AND PLAY.

• • •



Tapestry

Superbly hand-

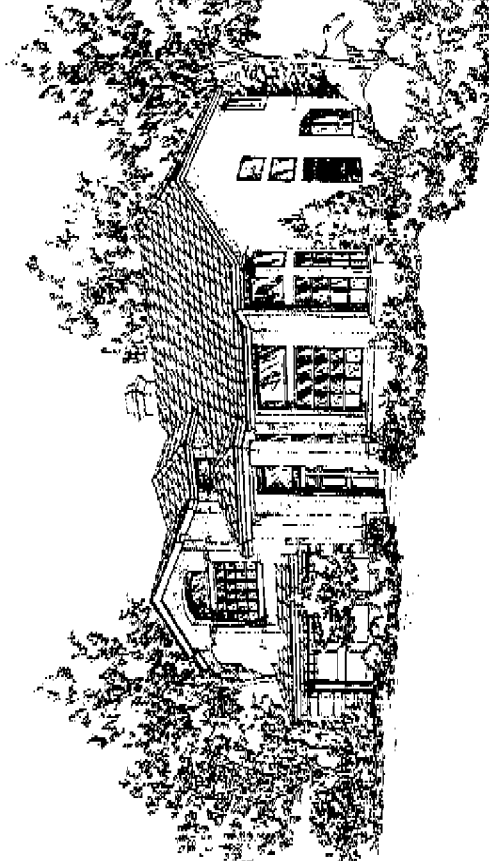
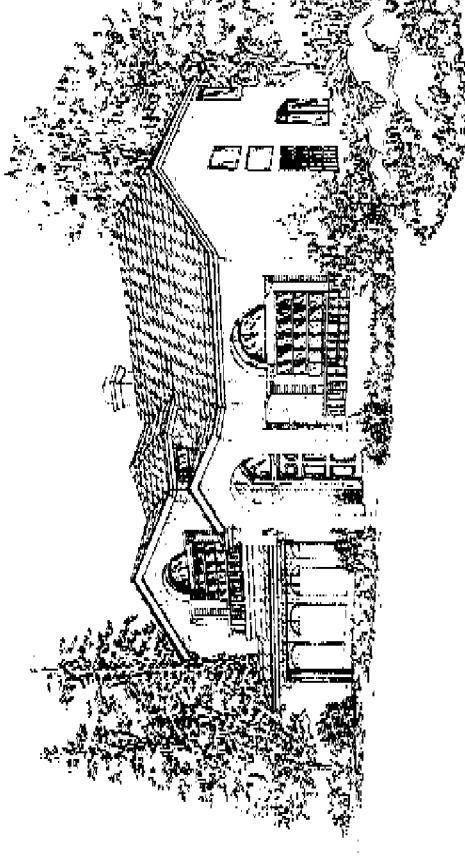
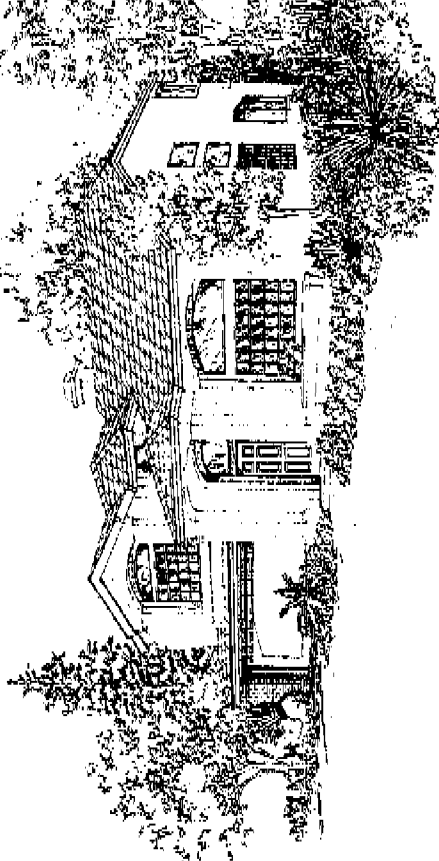
crafted tapestries

create lasting

visions of life and

legend, of self-

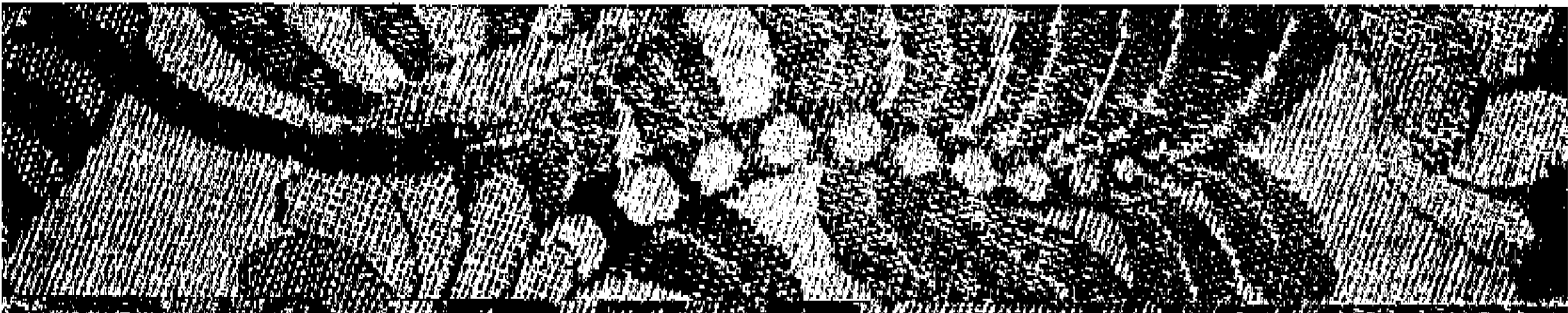
expression.



FALCON

PLAN I • 1,749 SQUARE FEET
3 BEDROOMS • 2½ BATHS

A TAPESTRY BLENDS ELEMENTS OF ART. THE
FALCON COMBINES ELEMENTS OF STYLE AND
COMFORT. WITH AN INVITING WINDOW SEAT
... SPACIOUS CLOSETS IN THE MASTER BED-
ROOM. A WELCOMING HEARTH IN THE FAMILY'S
ROOM... A HUGE KITCHEN FILLED WITH LIGHT.





Falcon

(16th Century)

The nobility took

a merry outing to

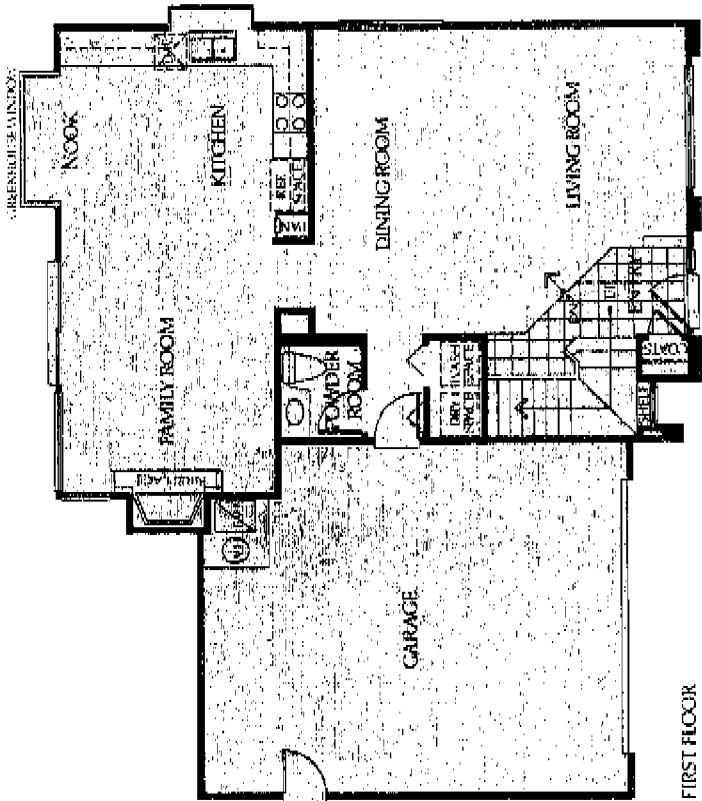
capture this

chase bird of

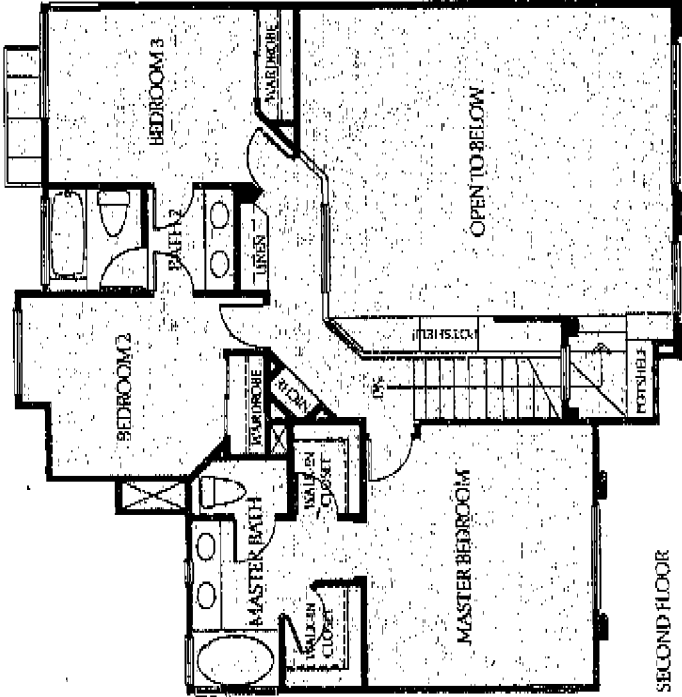
prey for falconry.

The medieval

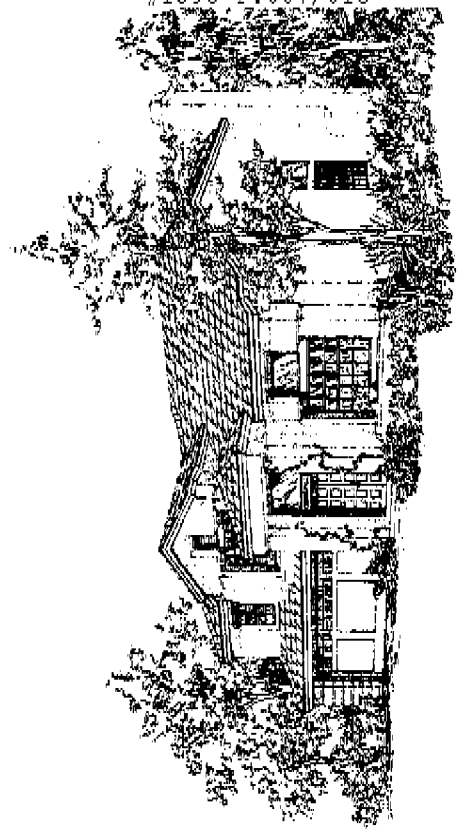
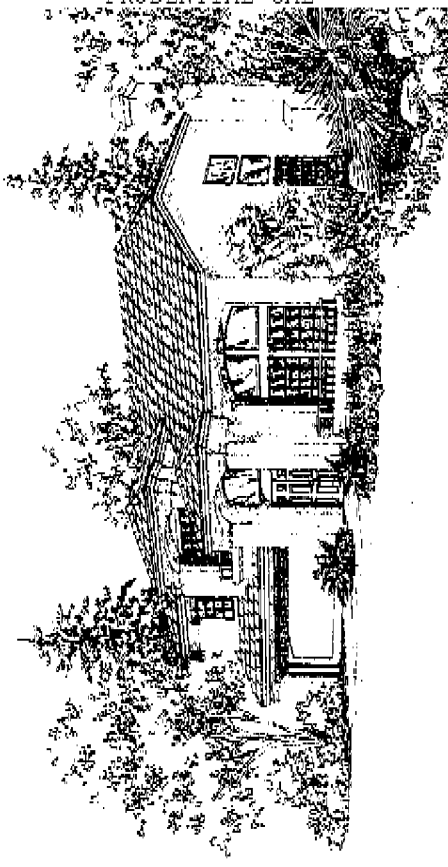
sport of kings.



FIRST FLOOR



SECOND FLOOR



THOUSAND FLOWERS

PLAN II • 1,938 SQUARE FEET
3 BEDROOMS • 2½ BATHS

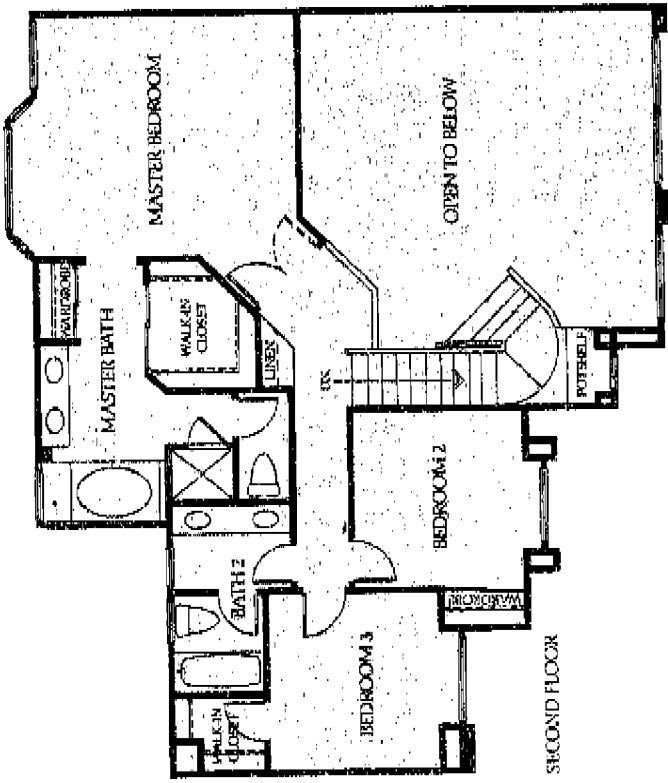
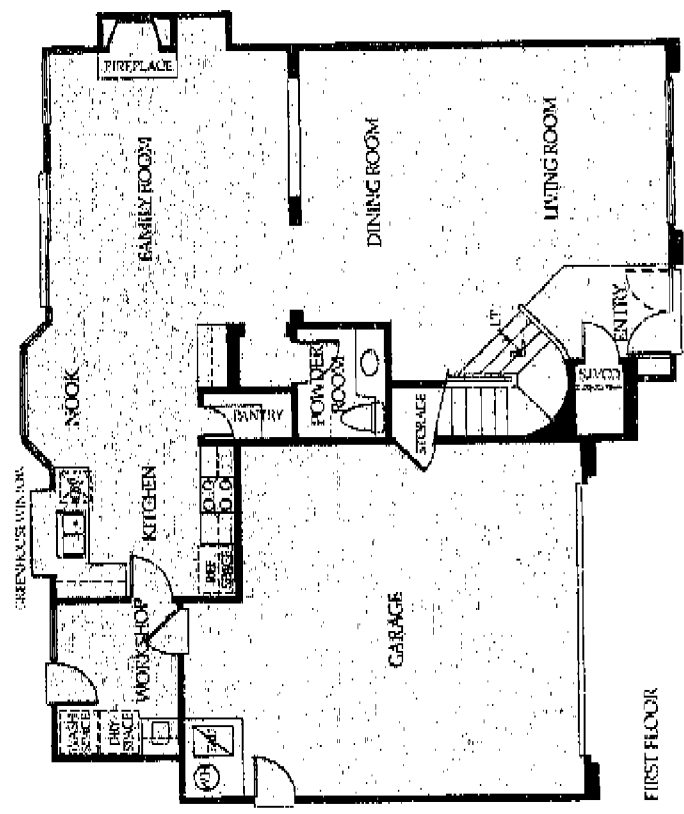
A TAPESTRY IS A CRAFT AND A WORK OF ART. THOUSAND FLOWERS IS A PLACE OF REFUGE AND A CENTER OF ACTIVITY. WITH A LARGE WORKSHOP FOR CREATIVE TINKERING . . . AN INTERIOR LAUNDRY ROOM FOR EVERY CONVENIENCE. A KITCHEN WITH A COZY NOOK . . . A FIREPLACE TO WARM THE SPIRITS.

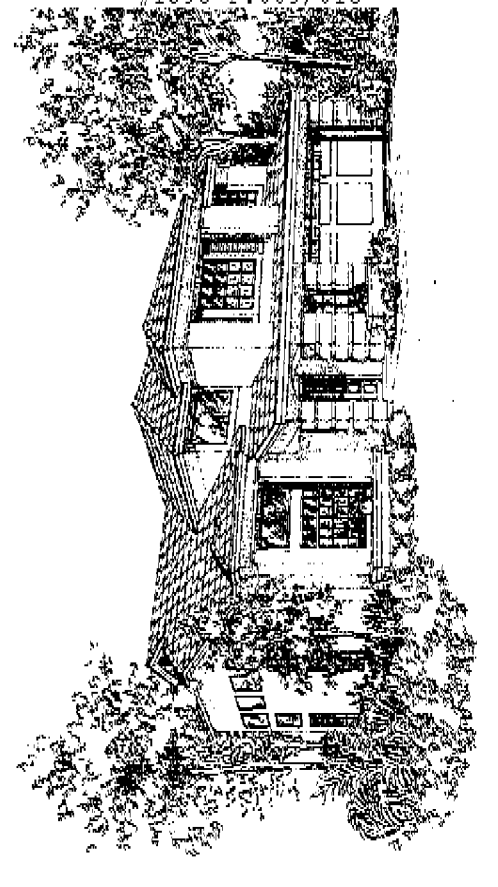
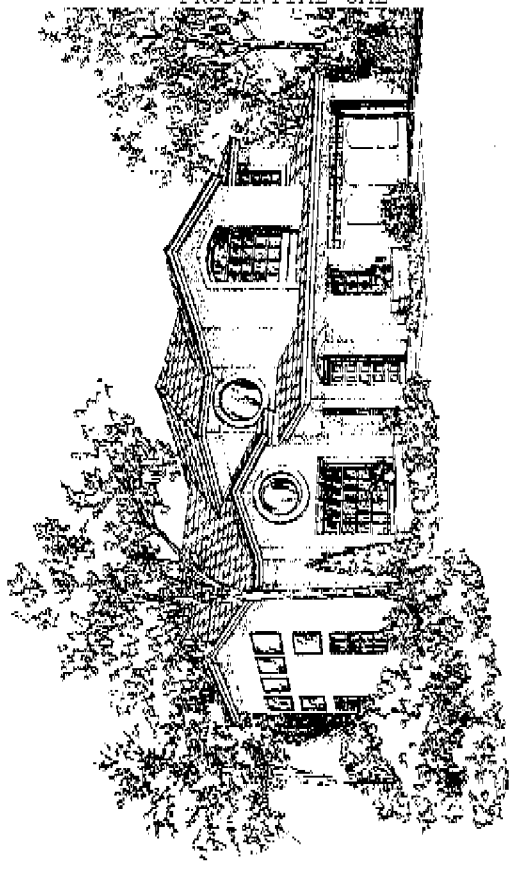
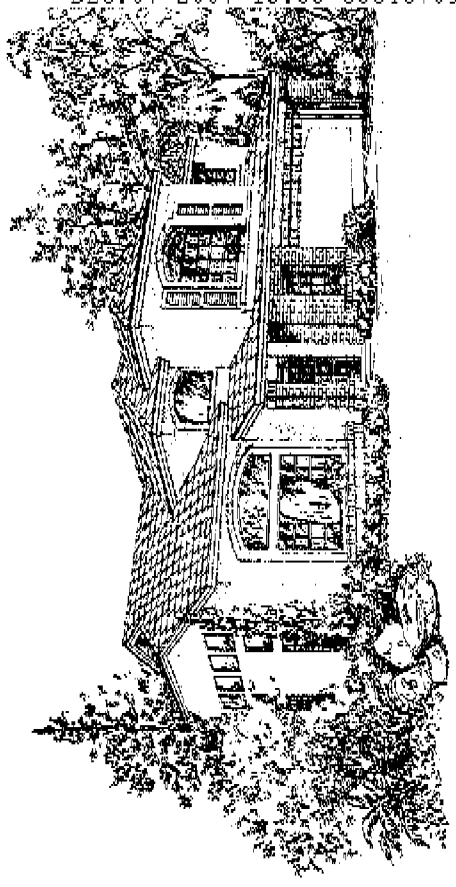
• • •





*Thousand
Flowers
(16th Century)
A brilliant field of
flowers, alive
with birds and
animals, encircles
a central coat
of arms.*





SWAN

PLAN III • 2,072 SQUARE FEET
4 BEDROOMS • 2½ BATHS

A TAPESTRY'S STORY DEVELOPS OVER TIME. THE SWAN MAY WELL ACCOMMODATE A LIFETIME OF CHANGES. WITH AN OPTIONAL RETREAT OR EXTRA BEDROOM . . . A WORKSHOP-NOOK . . . A SHOWCASE KITCHEN AND WALK-IN PANTRY. AN EVOLVING PICTURE, REFLECTING LIFE.





Stair

(18th-Century)

Delicate lines and

intricate detail

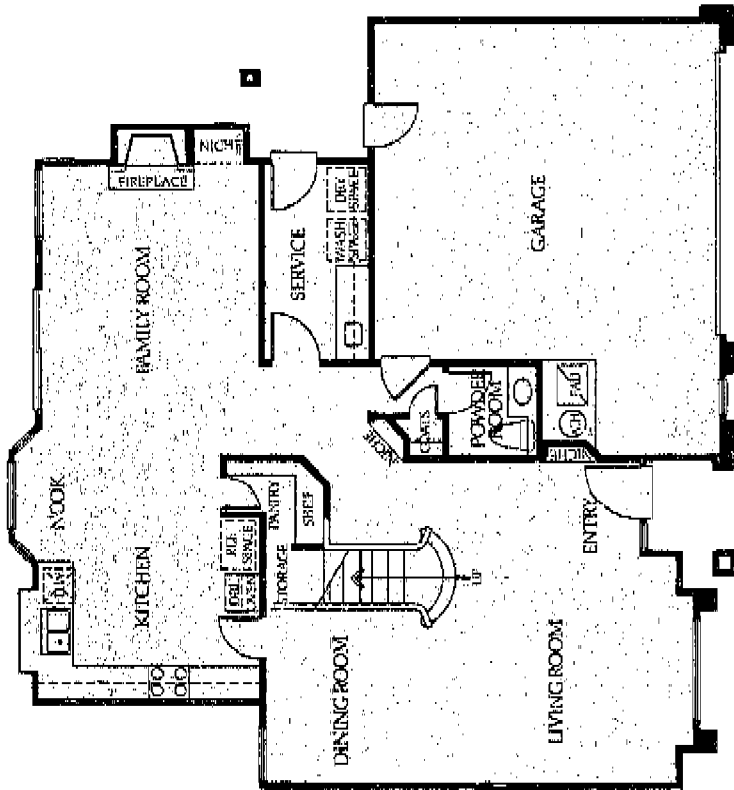
capture the serene

mood of a languid

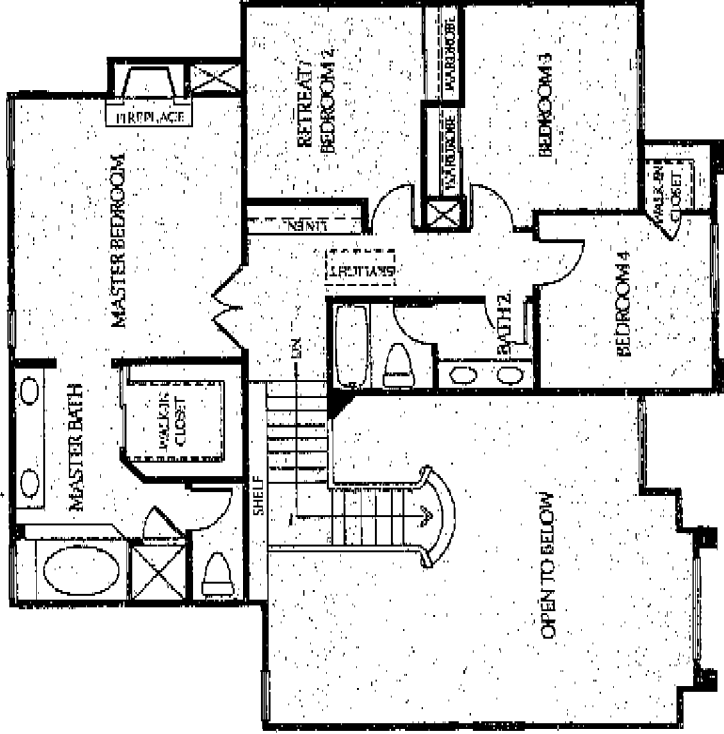
summer's day.

The inspiration for

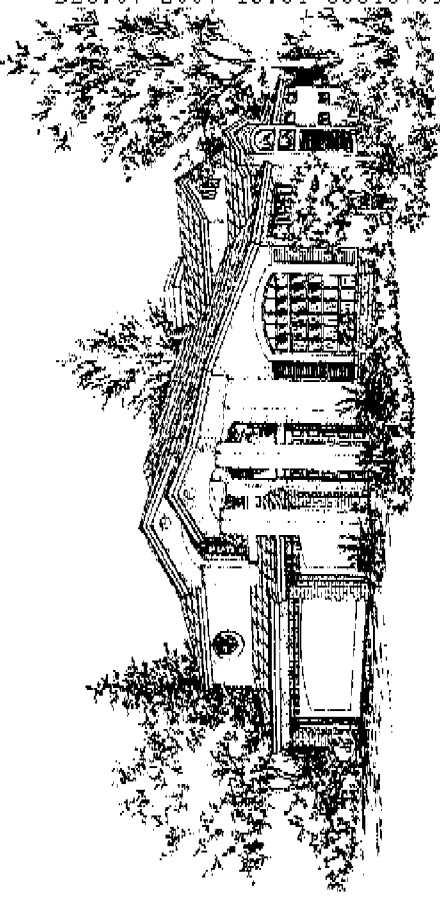
the Sun.



FIRST FLOOR



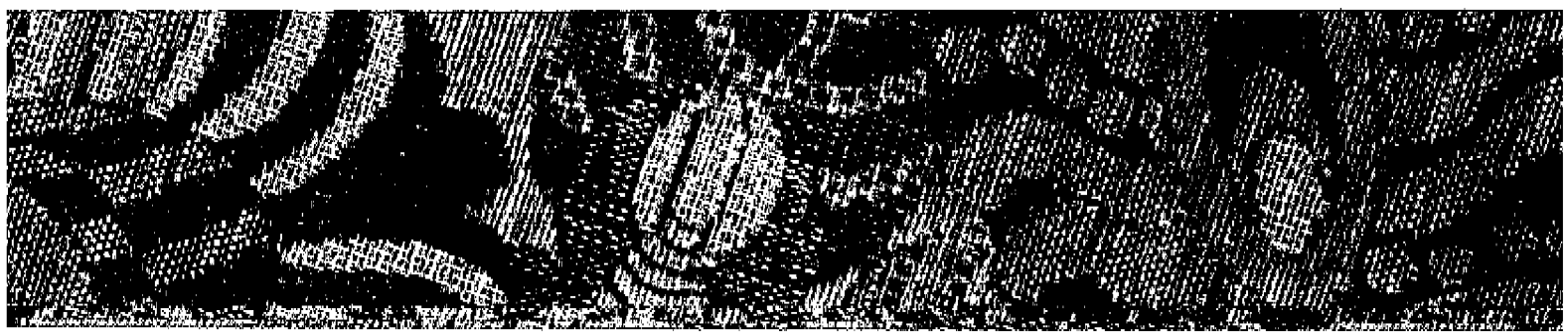
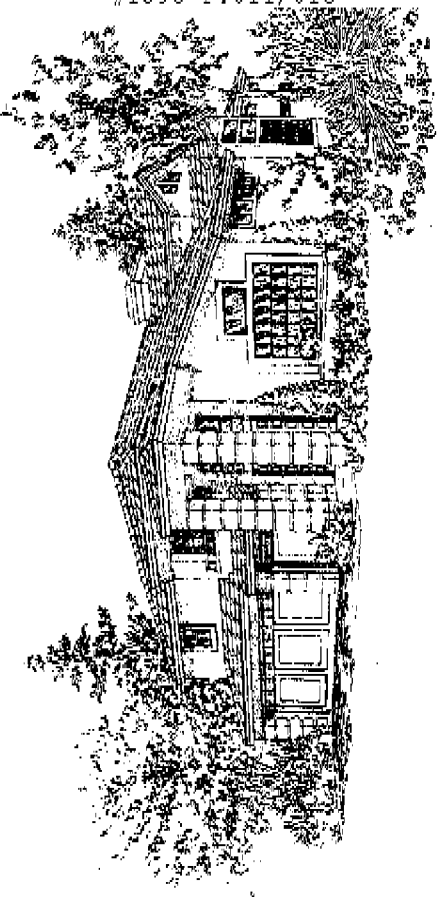
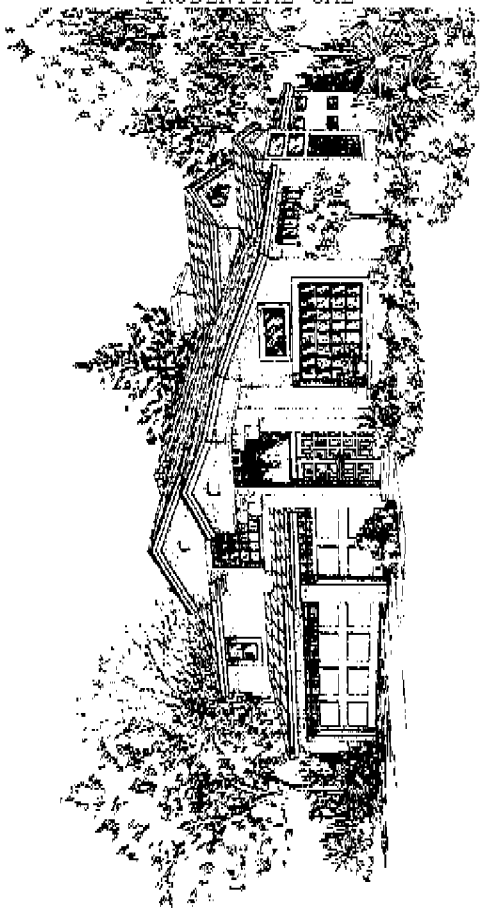
SECOND FLOOR



FOUR SEASONS
 PLAN IV • 2,288 SQUARE FEET
 4 BEDROOMS • 3 BATHS

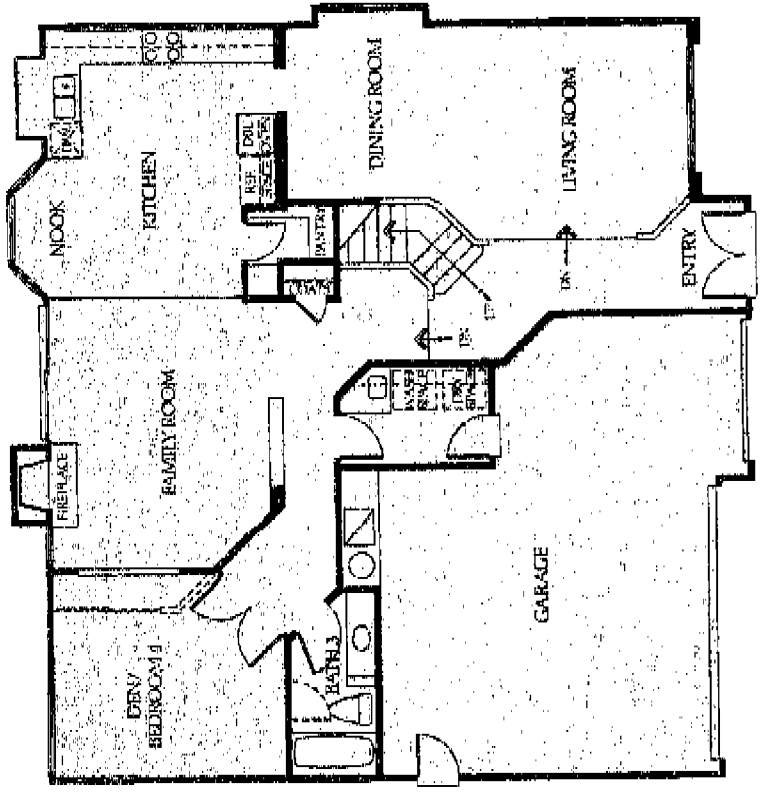
A TAPESTRY WEAVES FACT AND FANTASY. FOUR SEASONS UNITES ESSENTIALS AND ELEGANCE. WITH A STRIKING, CURVED STAIRCASE . . . A ROMANTIC GLASS FIREPLACE BETWEEN MASTER BEDROOM AND BATH. A PRIVATE DEN OR EXTRA BEDROOM . . . A VIBRANT ILLUSTRATION OF IMAGE. AND IMAGINATION.

• • •

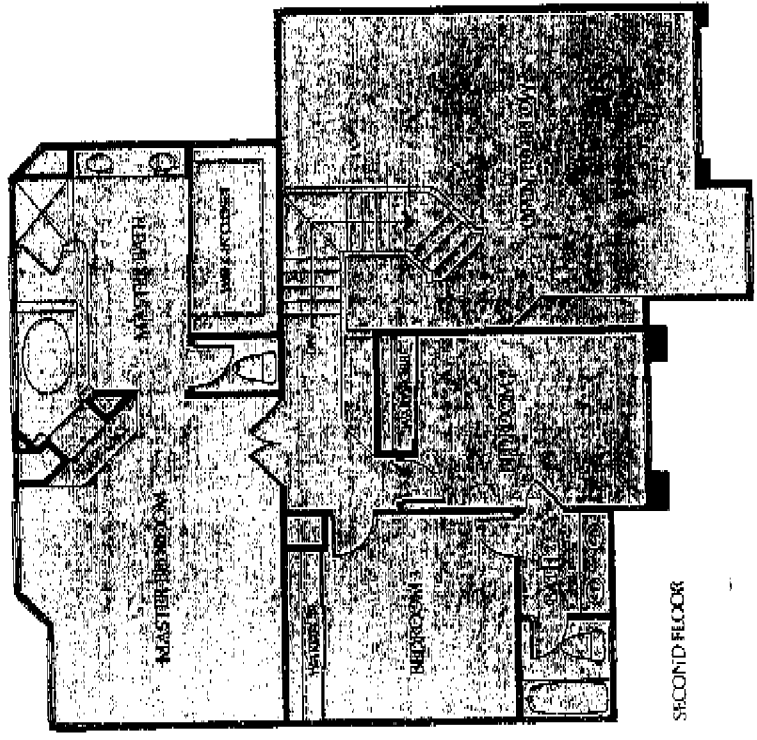




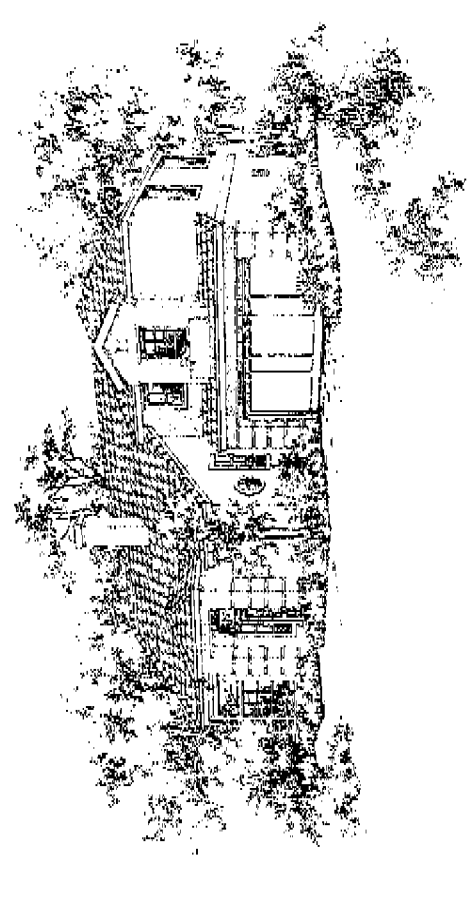
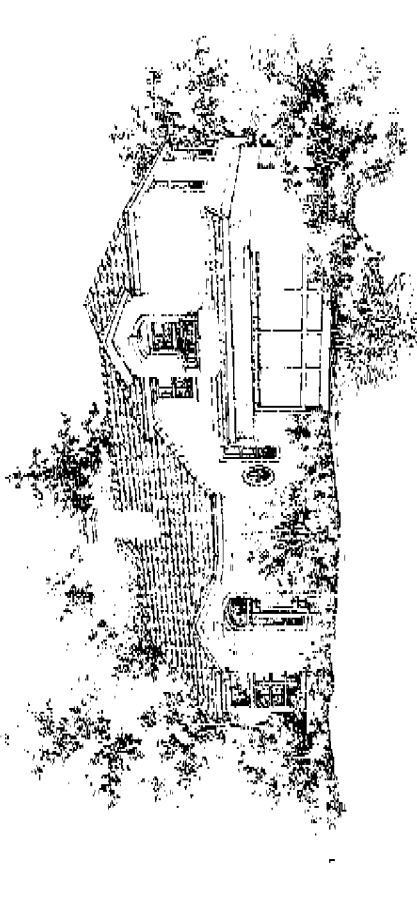
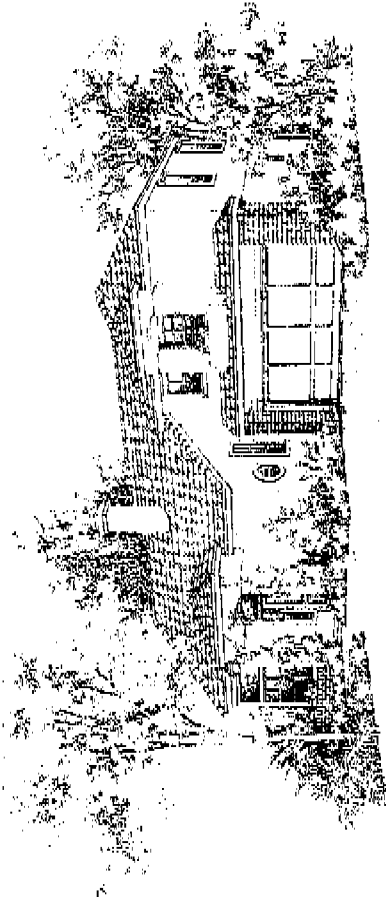
Four Seasons
(18th Century)
Gentle creature
of the forest
symbolize the
succession of the
seasons and the
renewal of life
they bring.



FIRST FLOOR



SECOND FLOOR

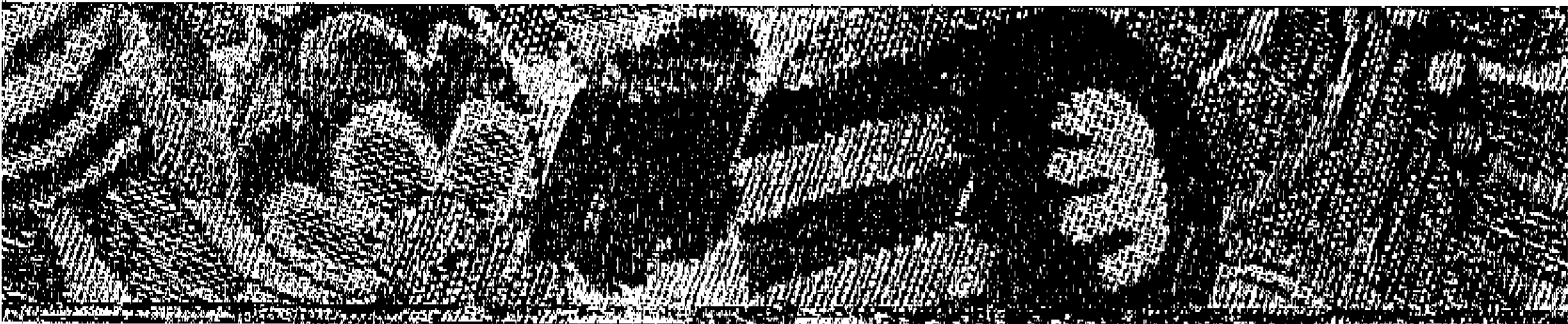


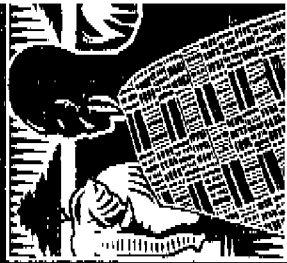
KENTÉ

PLAN V • 1,464 SQUARE FEET
3 BEDROOMS • 2½ BATHS

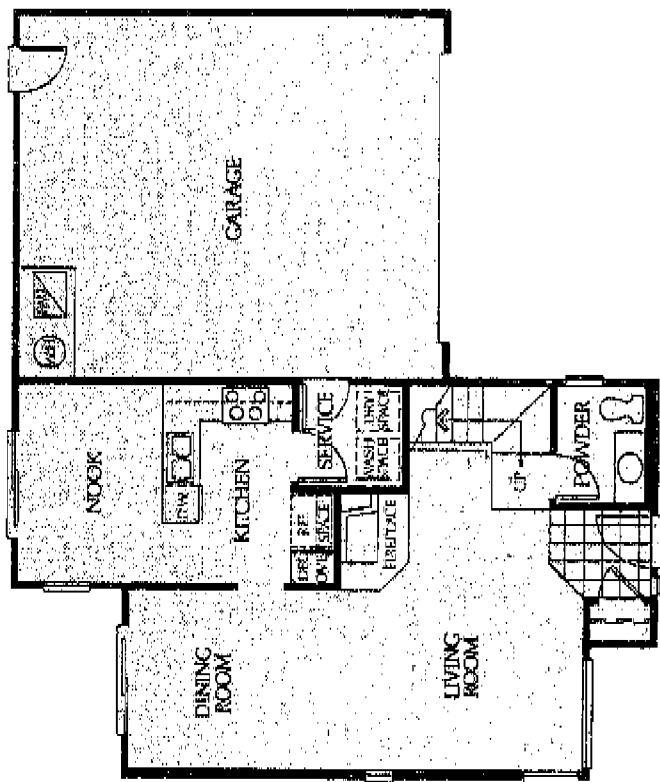
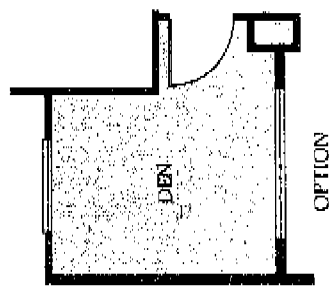
A TAPESTRY IS BOTH CULTURAL AND HISTORICAL. KENTÉ IS RICH WITH DIFFERENT SHAPES AND TEXTURES. POT SHELVES, HIGH AND LOW, SURROUND THE ENTRY . . . CEILING HEIGHTS CHANGE TO DEFINE SPACES . . . A BREAKFAST NOOK IS TUCKED WITHIN THE KITCHEN, AND UPSTAIRS, WINDOWS SEND LIGHT STREAMING INTO THE MASTER BEDROOM.

• • •

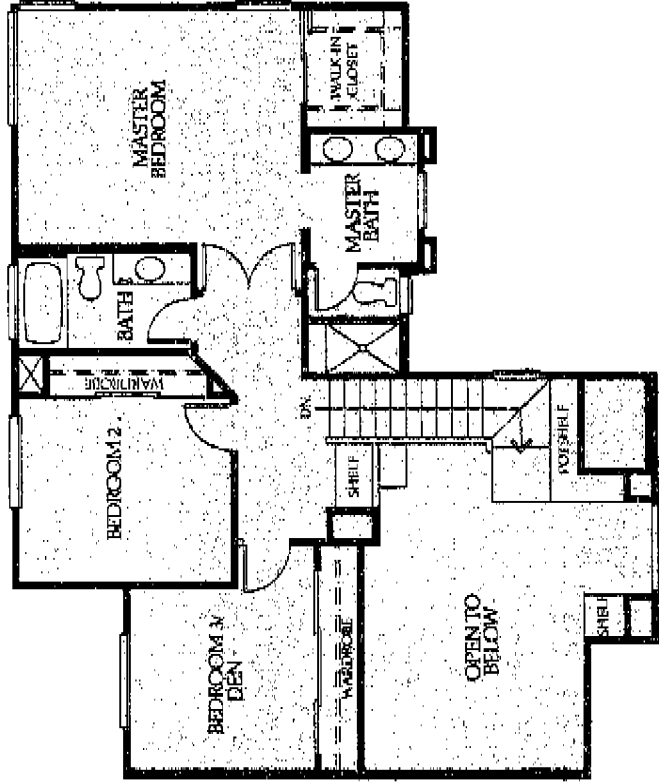




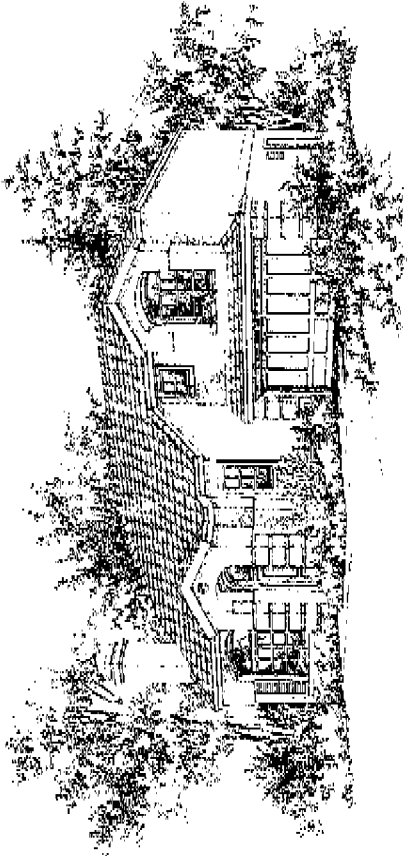
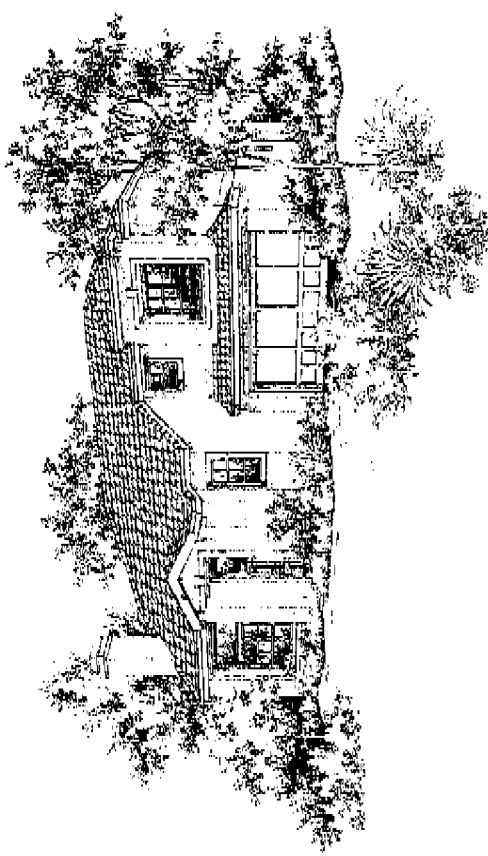
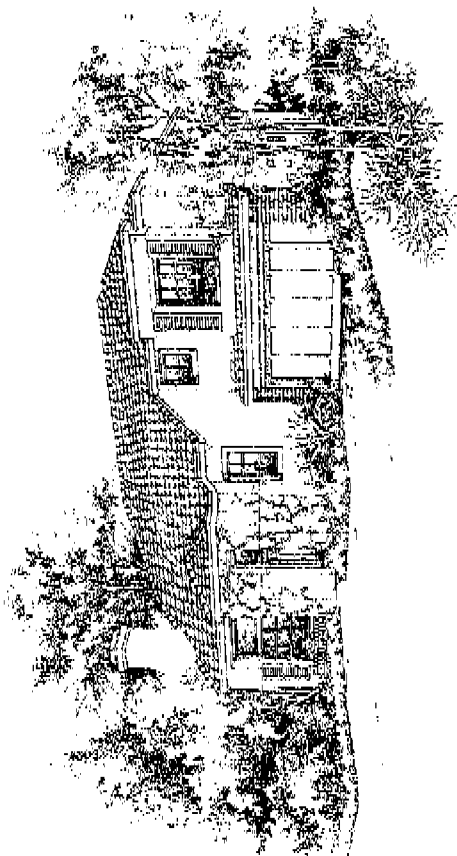
*Kente
(17th Century)
A spirit of
adventure, echoed
with exotic tribal
rhythms. The
willingness to
explore the
uncharted realms
of the world.*



FIRST FLOOR



SECOND FLOOR

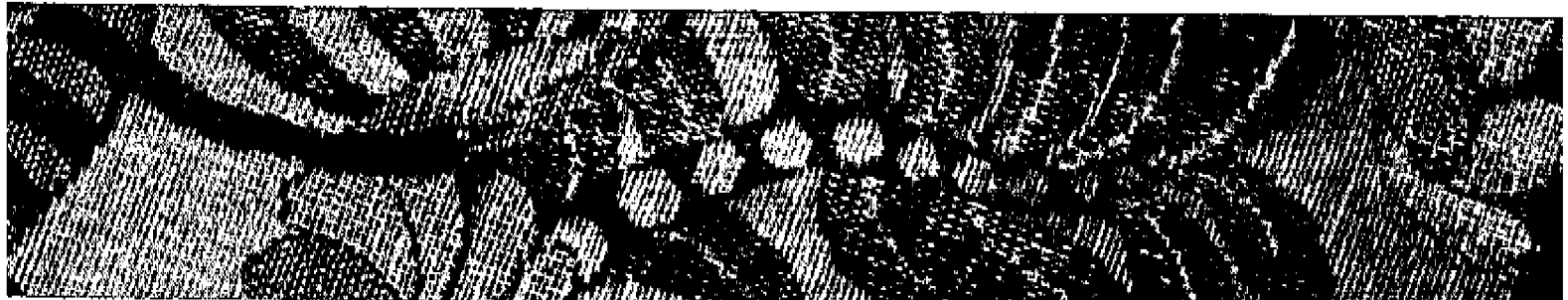


TAPIZ

PLAN VI • 1,556 SQUARE FEET
3 BEDROOMS • 2½ BATHS

A TAPESTRY IS VIVID AND ALIVE. TAPIZ
 CREATES BRIGHT, ACTIVE AREAS FOR THE
 FAMILY. A FIREPLACE IN THE LIVING ROOM . . .
 AN OPEN FAMILY ROOM ADJOINING THE
 KITCHEN . . . A GREENHOUSE WINDOW OVER
 THE SINK . . . A COMFORTABLE MASTER SUITE
 WITH WALK-IN CLOSET.

• • •





Tapiz

(19th Century)

The weaver

blends her story,

in harmony with

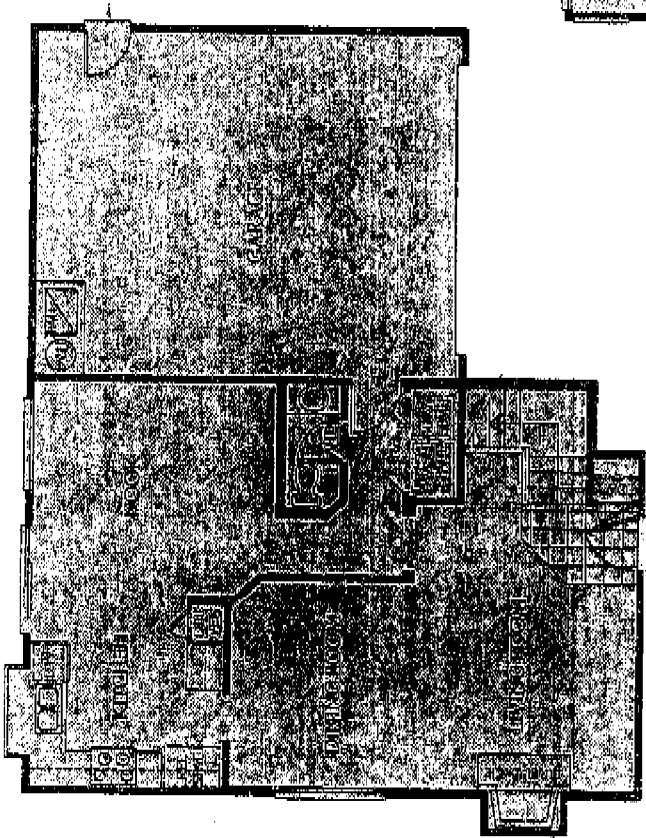
centuries-old

legends and lived

patterns

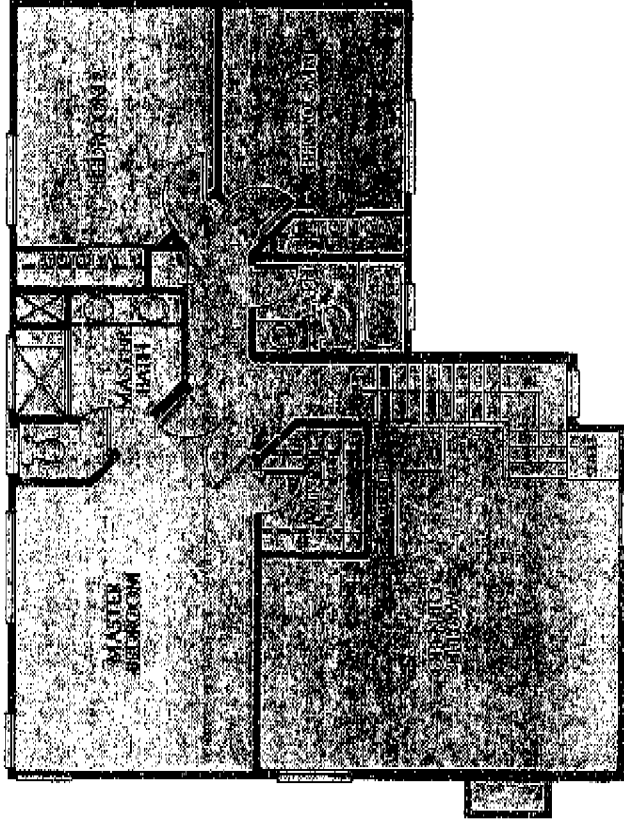
symbolizing the

future.



FIRST FLOOR

ENTRY



SECOND FLOOR



WHAT'S IN A NAME?

MORE THAN 36,000 FAMILIES HAVE LOOKED TO THE

NAME PRESLEY FOR HOMES OF DISTINCTION AND

SUPERIOR QUALITY. FOR FINE CRAFTSMANSHIP AND

ENERGY-EFFICIENT FEATURES.

BUT WHY SHOULD YOU BECOME NUMBER 36,001?

BECAUSE WE SPECIALIZE IN BUILDING HOMES THAT

REALLY FIT YOUR NEEDS. NOT OURS.

AT PRESLEY OF SAN DIEGO, WE LISTEN TO PEOPLE

JUST LIKE YOU BEFORE BUILDING EACH NEIGHBOR-

HOOD. WE HEAR WHAT KIND OF DESIGNS AND

FEATURES FIT YOUR LIFESTYLE.

WE ALSO ASK WHAT WAYS WE COULD REALLY ADD

SOMETHING SPECIAL TO YOUR HOME ALLOWING YOU

TO PERSONALIZE IT WITH FEATURES YOU'D EXPECT

TO FIND ONLY IN EXPENSIVE CUSTOM HOMES.

THEN WE BRING IT ALL TOGETHER.

AT A PRICE YOU CAN AFFORD.

SOME OTHER FACTS ABOUT PRESLEY OF SAN DIEGO

THAT MIGHT INTEREST YOU:

WE WERE SELECTED BY HOMEOWNERS JUST LIKE YOU, FOR

THE SECOND YEAR IN A ROW, AS "HOME BUILDER OF

THE YEAR" IN THE HOME BUYERS CHOICE AWARDS.

PARTICULARLY FOR OUR SPEEDY RESPONSE TO

HOMEOWNER REQUESTS. AS WELL AS FOR OUR

DEDICATION TO CUSTOMER SERVICE AND DESIGN

EXCELLENCE.

CURRENTLY, PRESLEY OF SAN DIEGO IS DEVELOPING

THREE MASTER-PLANNED COMMUNITIES... IN NORTH

SAN DIEGO COUNTY, SAN MARCOS AND TEMECULA.

YOU'LL FIND SOMETHING SPECIAL ABOUT EACH...

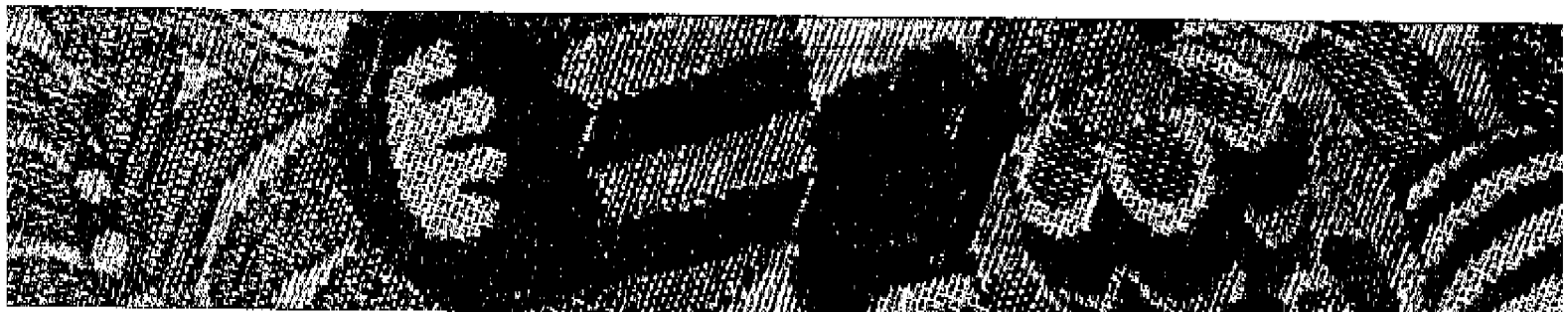
FROM THE CARMEL MOUNTAIN RANCH GOLF COURSE,

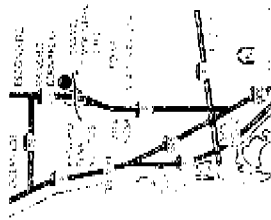
TO DISCOVERY HILLS' NEIGHBORHOOD PARKS, TO THE

OPEN PRESERVES SURROUNDING BRIDLEVILLE.

NOW YOU KNOW WHAT'S IN THE PRESLEY NAME.

SOMETHING SPECIAL FOR YOU.





11975 DANVERS CIRCLE

SAN DIEGO, CA 92128

(619) 673-4199

We'd like to thank the following individuals and organizations whose dreams have woven reality into reality.

- Architect: Basserman, Lagoni Architects
- Sales Office/Architecture: Impact Images, Inc.
- Interior Design: Cedar Design Art
- Landscape Architecture: C.W.A., Inc.
- Marketing Support: Franklin Strozza



Carmel Mountain Ranch