

TERRACINA



TERRACINA

Price List

RESIDENCE 1

Three Bedrooms, Two Baths

1,673 Square Feet

From \$ 173,990

RESIDENCE 2

Four Bedrooms, Two Baths

1,809 Square Feet

From \$ 179,990

RESIDENCE 3

Three Bedrooms, Two Baths

1,908 Square Feet

From \$ 172,990

RESIDENCE 4

Four Bedrooms, Two and One-Half Baths

2,004 Square Feet

From \$ 203,990

SALES OFFICE

619/740-5030

All floorplans and exterior renderings are artist's conceptions. Floorplans, exteriors and standard features may vary depending on the elevation and options selected. Brentwood Homes reserves the right to modify all plans, prices and specifications without notice or obligation.

FEATURES

that you will value for years to come

EXTERIOR FEATURES

- Concrete tile roofs
- Roll-up steel garage doors
- Vinyl framed windows with mullions per Residence
- Over-sized two-car garages
- Three car garages (Residence 4)
- Concrete driveways and sidewalks
- Full side and rear yard fencing
- Gas barbecue outlets in rear yards
- Front yard landscaping with sprinklers
- Finished garages including drywall and paint
- Underground utilities

INTERIOR FEATURES

- Volume ceilings with nine-foot plates
- Central heating
- See-through fireplaces (Residences 1 & 3)
- Wood-burning fireplaces with gas stoves
- Large media-wall areas
- Ceramic tile entries
- No-wax vinyl flooring in kitchen, laundry and bath
- Luxurious decorator carpeting
- Recessed lighting in most areas
- Colonist style interior doors
- Interior laundries with storage cabinets
- Rounded interior drywall corners
- Prewired for cable T.V.
- Telephone outlets in all bedrooms, dens & kitchen/family room areas

KITCHEN FEATURES

- Ceramic tile counter tops
- Custom stained hardwood cabinets
- Gas range cook top
- Self-cleaning gas ovens
- Microwave ovens
- Cast-iron porcelain double sinks
- Water line for ice makers
- Energy-saving dishwasher
- Island cabinets (Residences 1, 2 & 4)
- Upgraded faucets with sprayer

MASTER SUITE

- Separate oval tubs and showers
- Custom stained hardwood cabinets
- Ceramic tile counter tops with dual lavs
- Large walk-in closets
- Privacy locks
- Compartmentalized water closets

ENERGY-SAVING FEATURES

- Dual glazed windows and sliding doors
- Pilotless ignition on all gas cooking appliances
- 50-gallon water heater
- Weather stripping on all exterior doors
- Fully insulated walls and ceilings
- Energy-efficient heating units
- 8' entry doors of fiber glass for lasting beauty and energy savings (Residences 2, 3 & 4)

OPTIONS

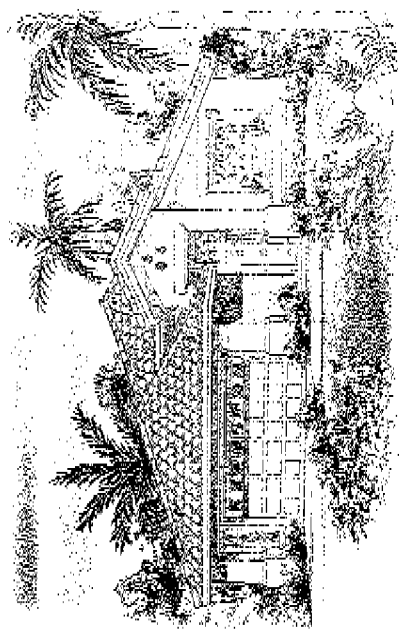
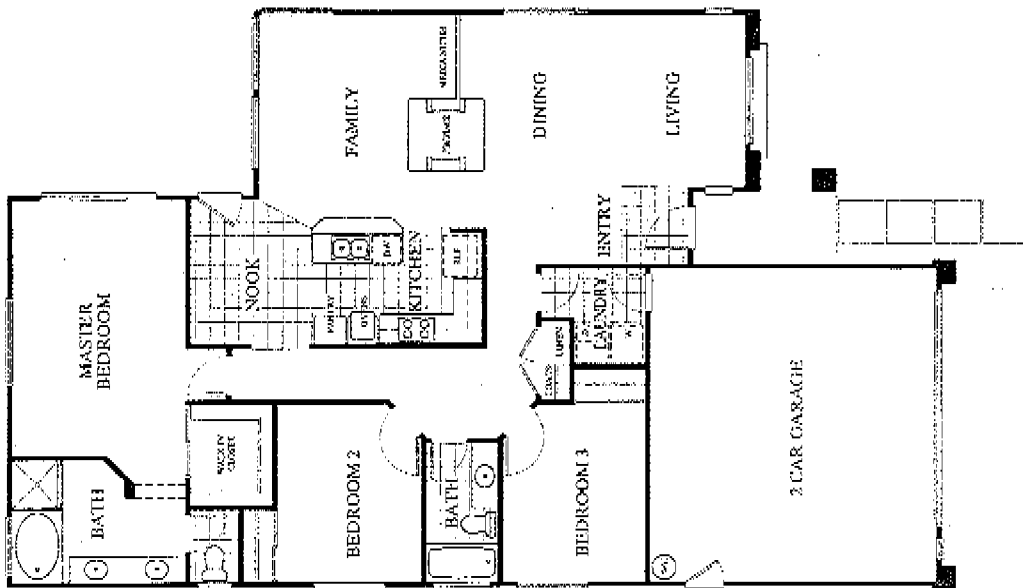
- Solid Corian, granite or ceramic tile countertops with border and accents for kitchen
- Ceramic tile, border and accents for masters and secondary baths
- Designer white kitchen cabinets with glass fronts
- Optional den (Residences 2 & 4)
- Optional super master bedroom (Residence 4)
- Extensive optional flooring selections
- Masonry fireplace face
- Forced-air conditioning
- Security alarm systems
- Built-in sound system
- Mirrored wardrobe doors
- Window treatments
- Dunn Edwards Tuffwall[®] interior paint
- Built-in cabinets as shown on models
- Tub enclosures for second baths
- Electrical options and pre-wiring for ceiling fans
- Garage storage cabinets

All floorplans and exterior renderings are artist's conception. Floorplans, exteriors and standard features may vary depending on the elevation and options selected. Brentwood Homes reserves the right to modify all plans, prices and specifications without prior notice.

RESIDENCE

1,673 SQUARE FEET
3 BEDROOMS, 2 BATHS
OVERSIZED 2-CAR GARAGE

*A see-through fireplace
 views both the dining room
 and family room. You'll
 appreciate the privacy of the
 spacious master bedroom and
 the convenience of the extra-
 large breakfast nook.*



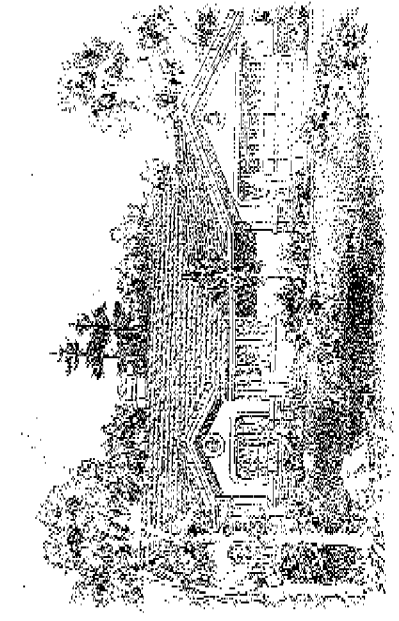
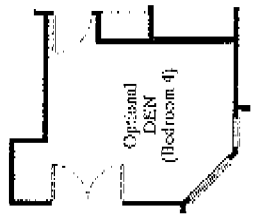
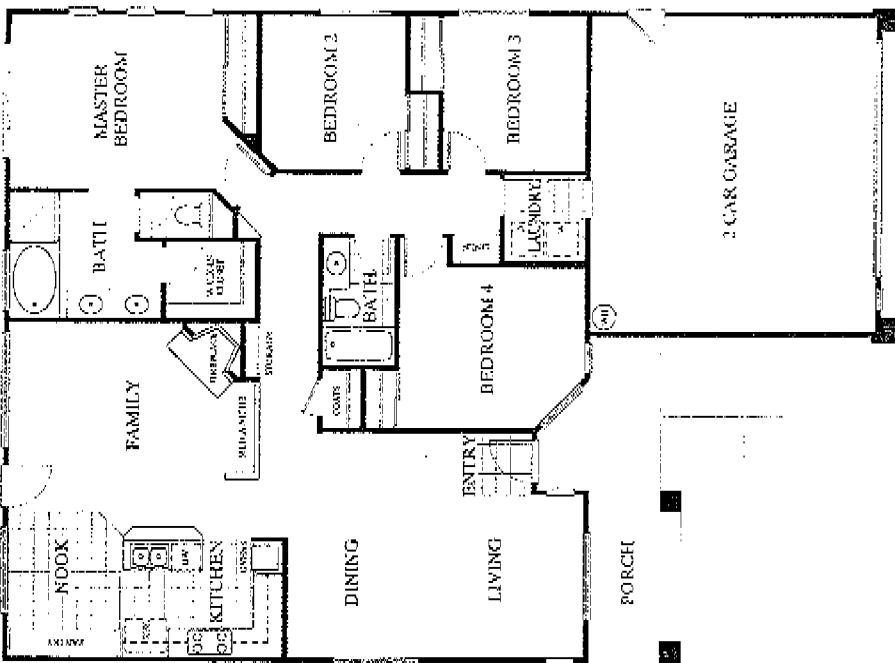
1BR

RESIDENCE



1,809 SQUARE FEET
4 BEDROOMS, 2 BATHS
OVERSIZED 2-CAR GARAGE

This easy-flowing floorplan offers an island breakfast bar, a fourth bedroom that can be an optional den, and a family room and master bedroom with direct access to the back yard.

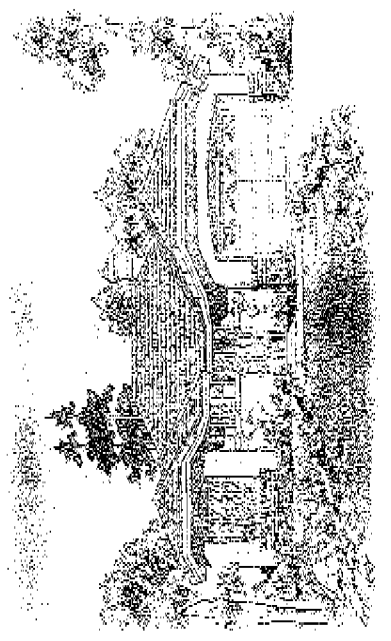
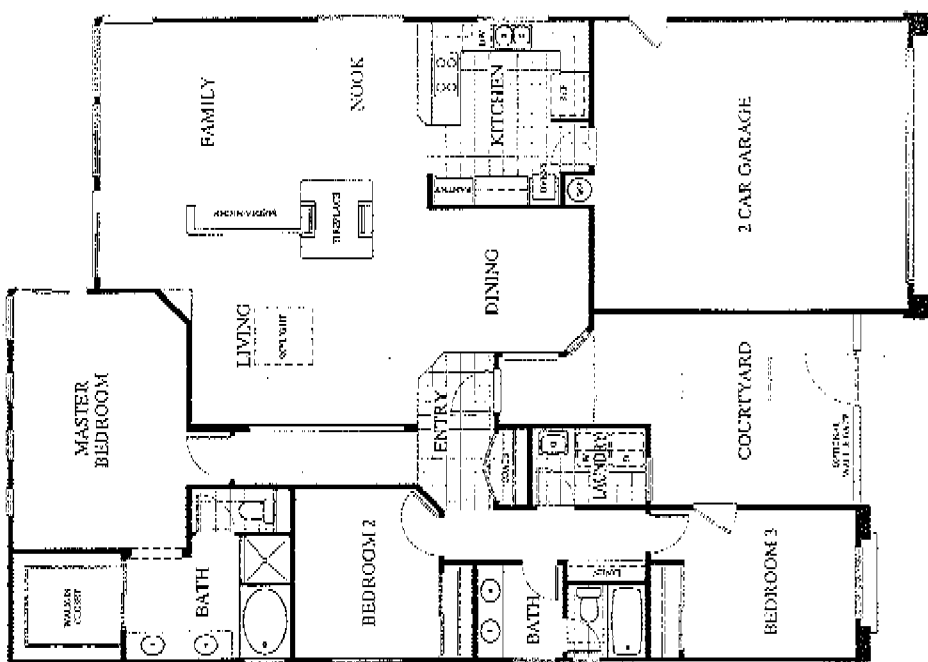


RESIDENCE



1,908 SQUARE FEET
3 BEDROOMS, 2 BATHS
OVERSIZED 2-CAR GARAGE

A skylight floods the living room with natural light in this home that features a charming courtyard, country kitchen and huge family room with a built-in media niche, and a see-through fireplace.



3A

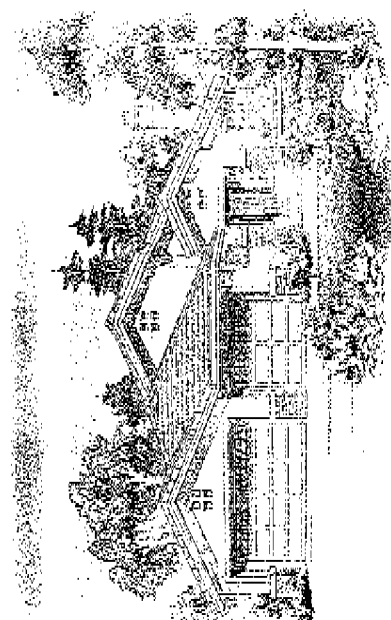
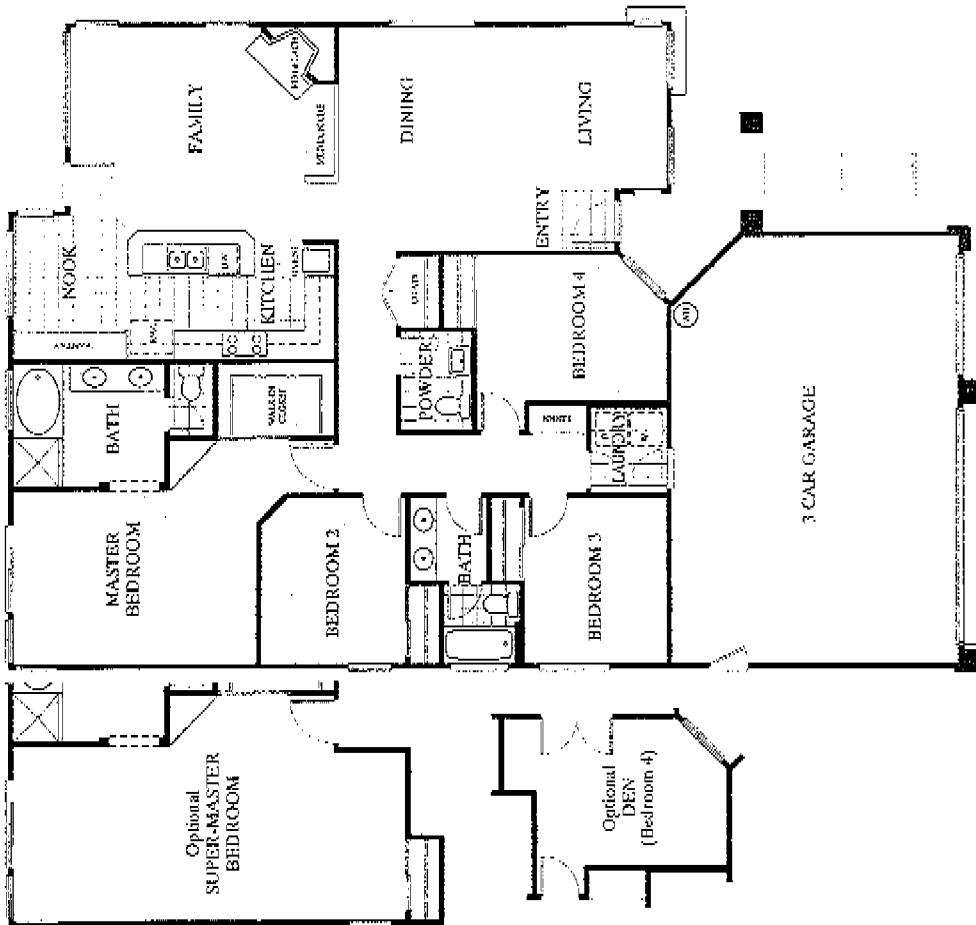
RESIDENCE

2,004 SQUARE FEET

4 BEDROOMS, 2 1/2 BATHS

3-CAR GARAGE

Choose between a 4 bedroom home or enjoy the luxury of a super master suite with both a walk-in and sliding door wardrobe closet. This home offers a large pantry and three-car garage.



4AR



TERRACINA

1465 W 11TH AVE.
ESCONDIDO, CA 92029
619.740.5030
FAX 619.740.5091

