

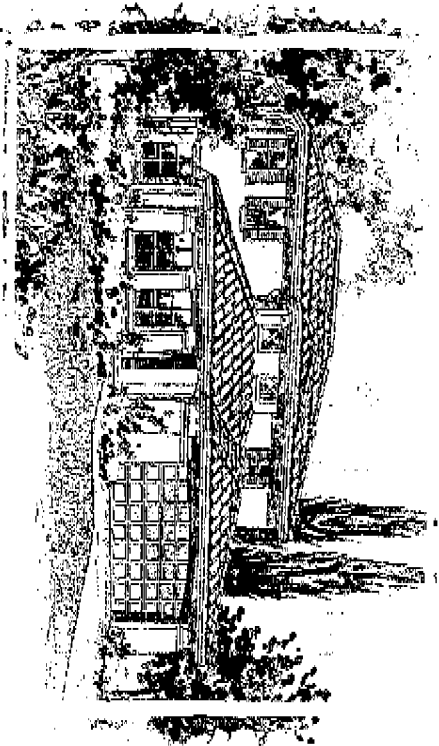
TERRAZA

At Strapps Ranch Villages

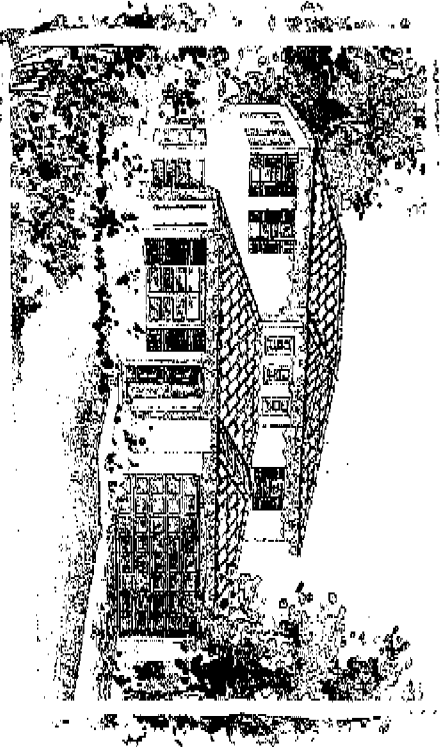
A COMMUNITY OF RESIDENTIAL HOMES

CASTILLION

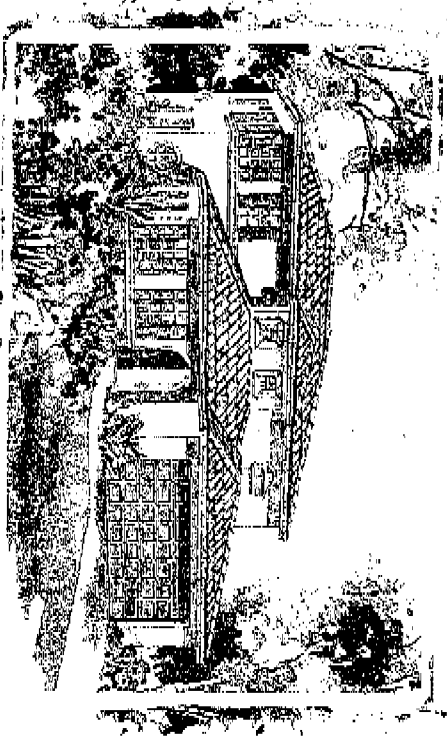
Plan One: Two Story, 4 Bedrooms, 3 Baths, 3-Car Garage, 2,809 Square Feet



Elevation A

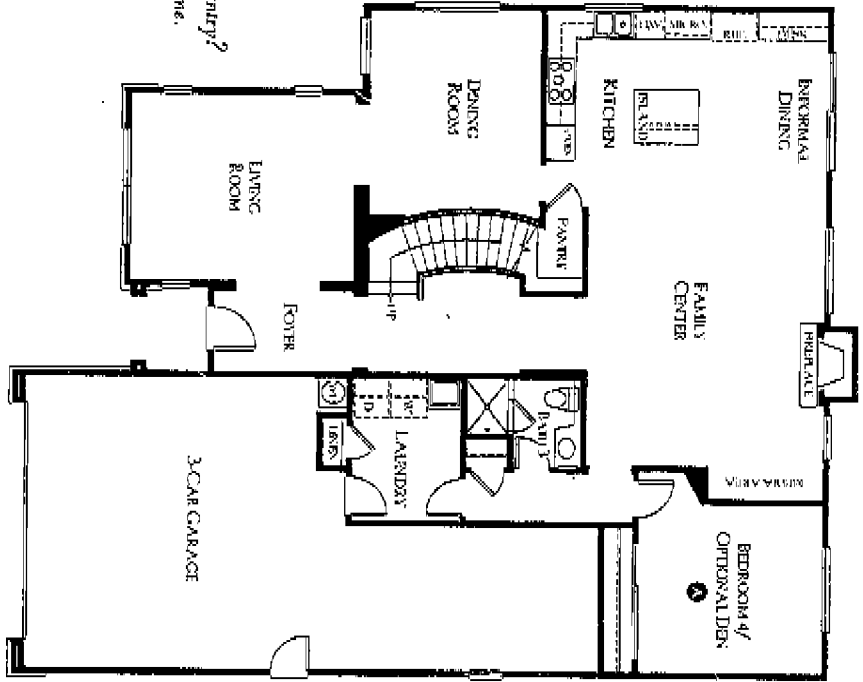


Elevation B - Model

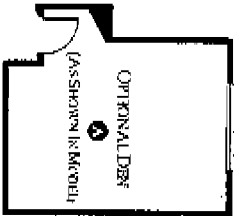


Elevation C

Love a huge pantry?
Welcome home.

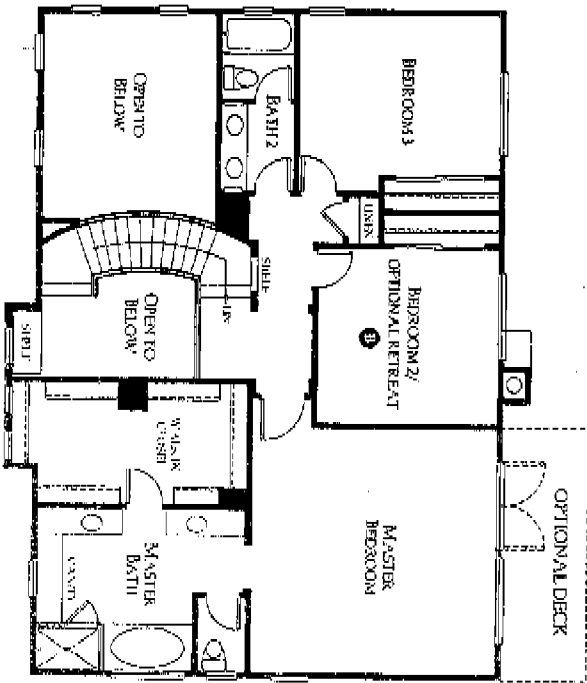
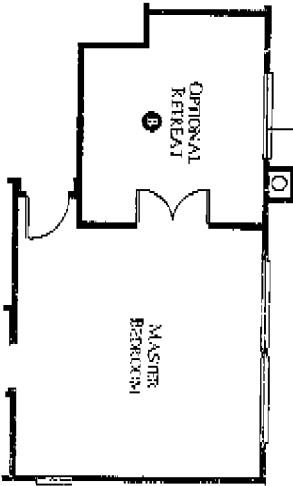
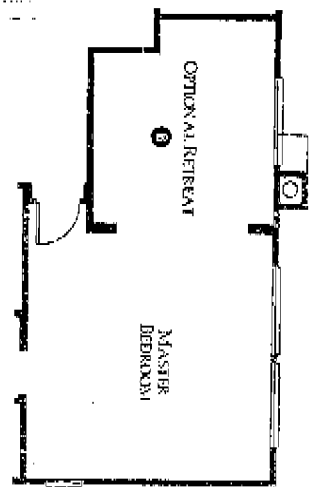


This closet helps tidy up
the laundry.



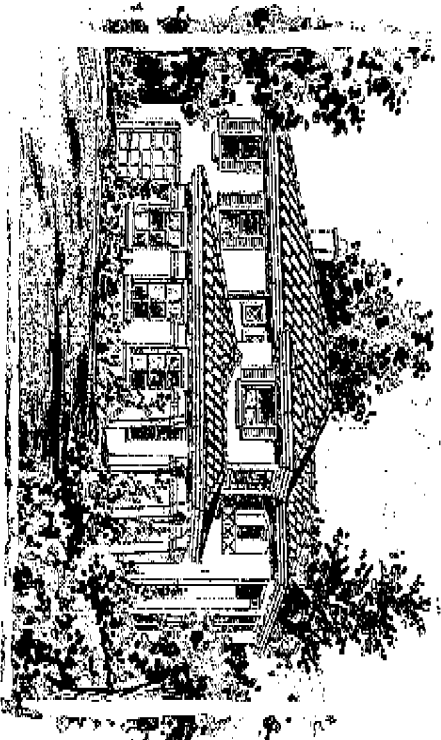
Wonderful as a
music room, a library,
or a craft room.

Design your retreat
your way, with doors
or without.

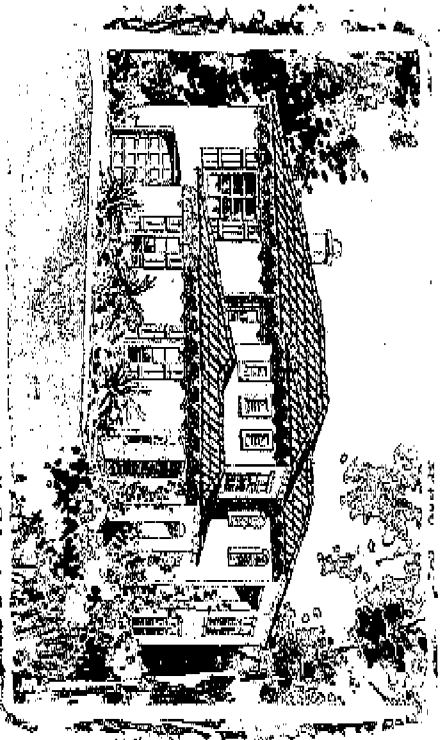


VENICIAN

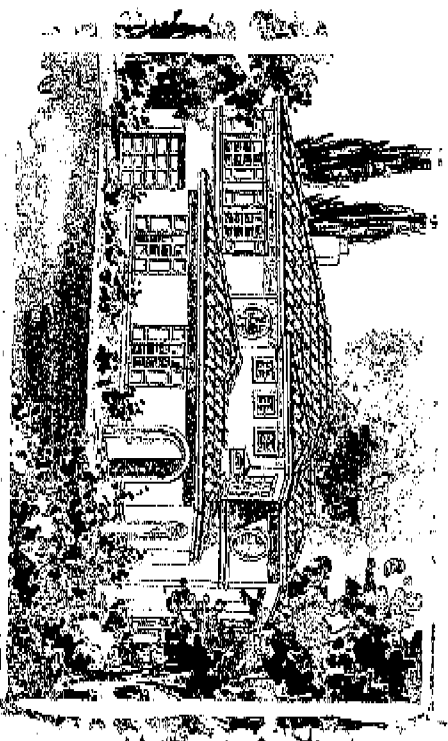
Plan Two: Two Story, 5 Bedrooms, 3.5 Baths, 3-Car Garage, 3,159 Square Feet



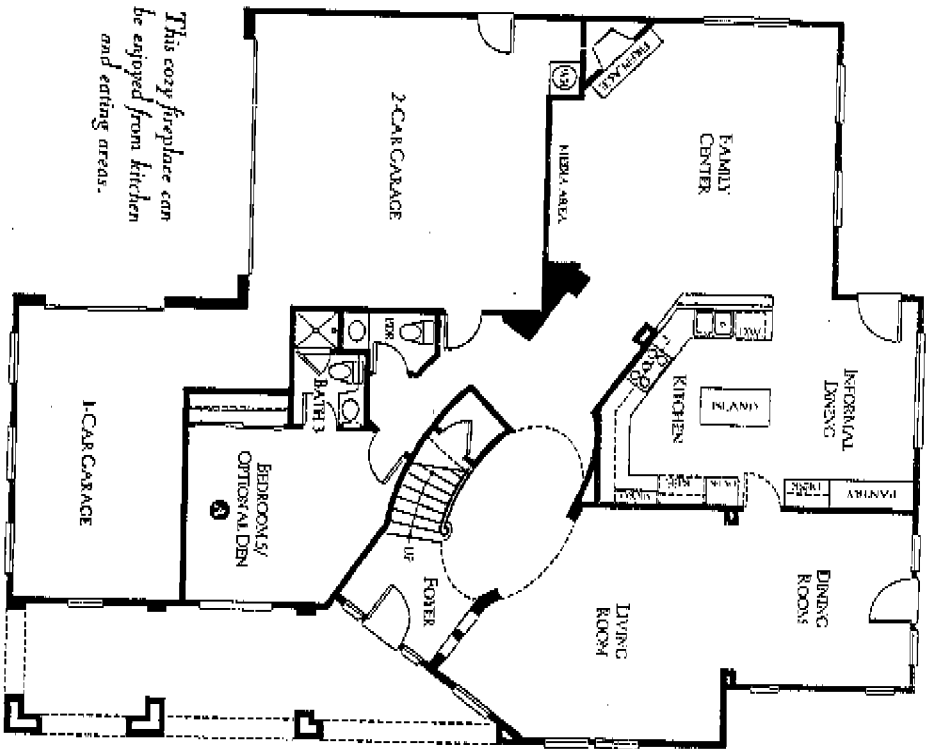
Elevation A - Model



Elevation B

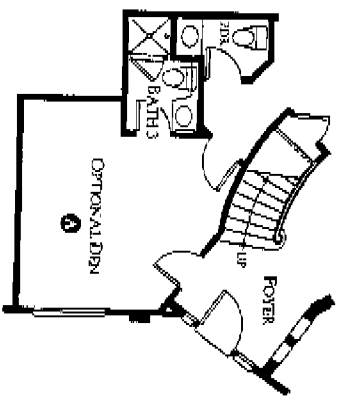


Elevation C

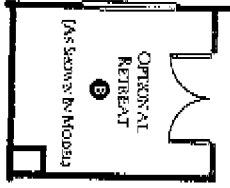
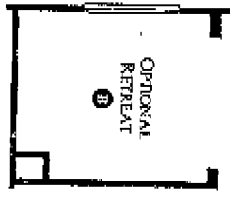


This cozy fireplace can be enjoyed from kitchen and eating areas.

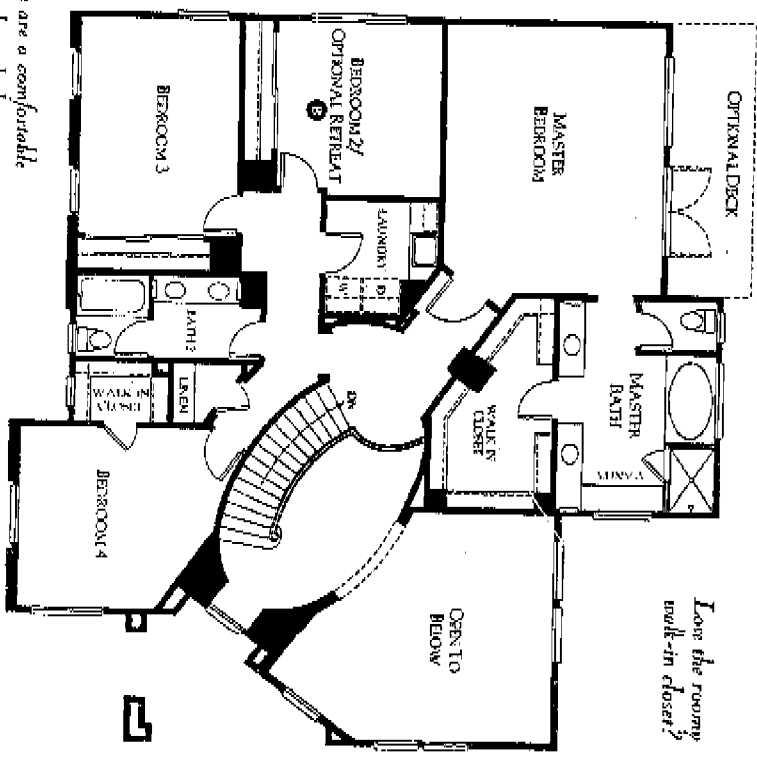
You can opt for a retreat here (or a nursery).



Note the graceful curve of the dramatic staircase.



Love the room? walk-in closet?

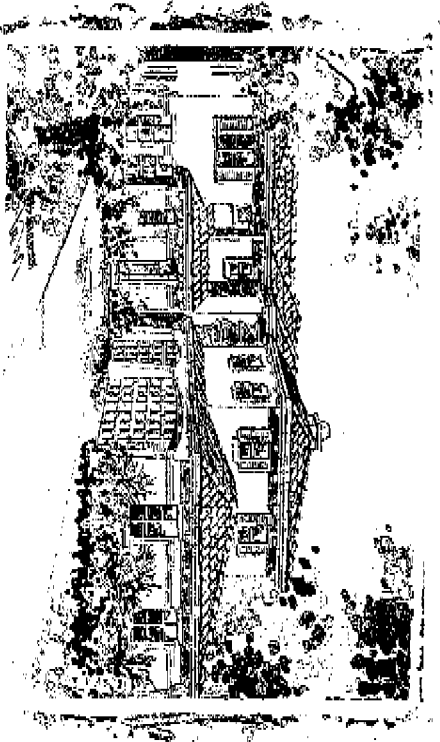


Twin beds are a comfortable fit in this large bedroom.

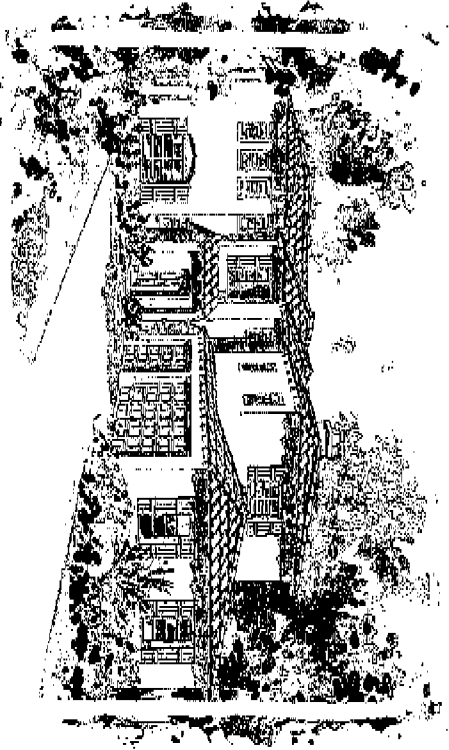
Dashed lines represent options. See your sales representative for details. Tr. B. H. ...

LAUDERDALE

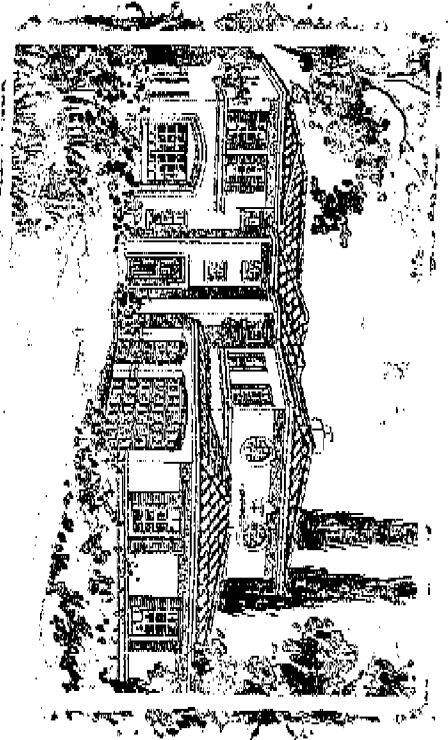
*Plan Three: Two Story, 5 Bedrooms, 4 Baths, 3,443 Square Feet
(3,654 Square Feet with Bonus Room)*



Elevation A



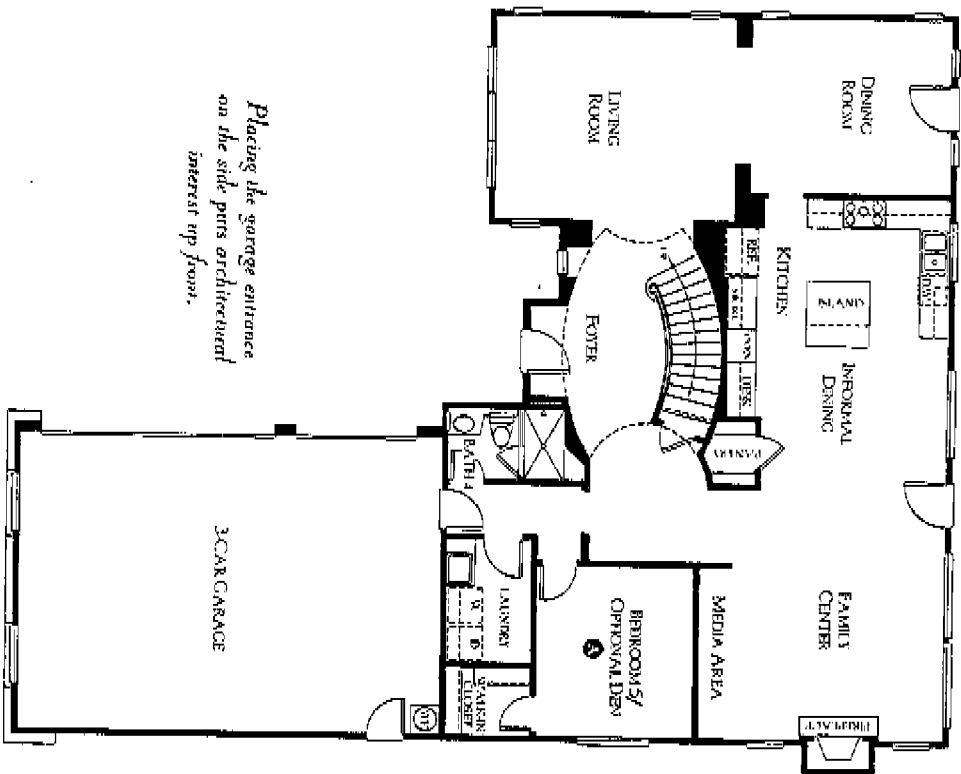
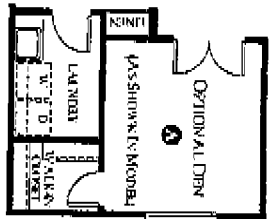
Elevation B



Elevation C - Model

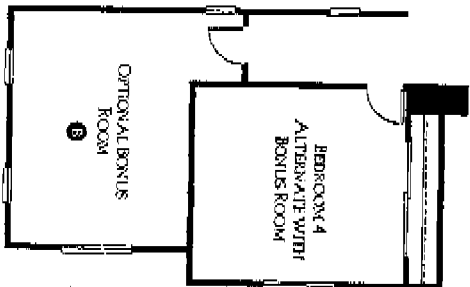
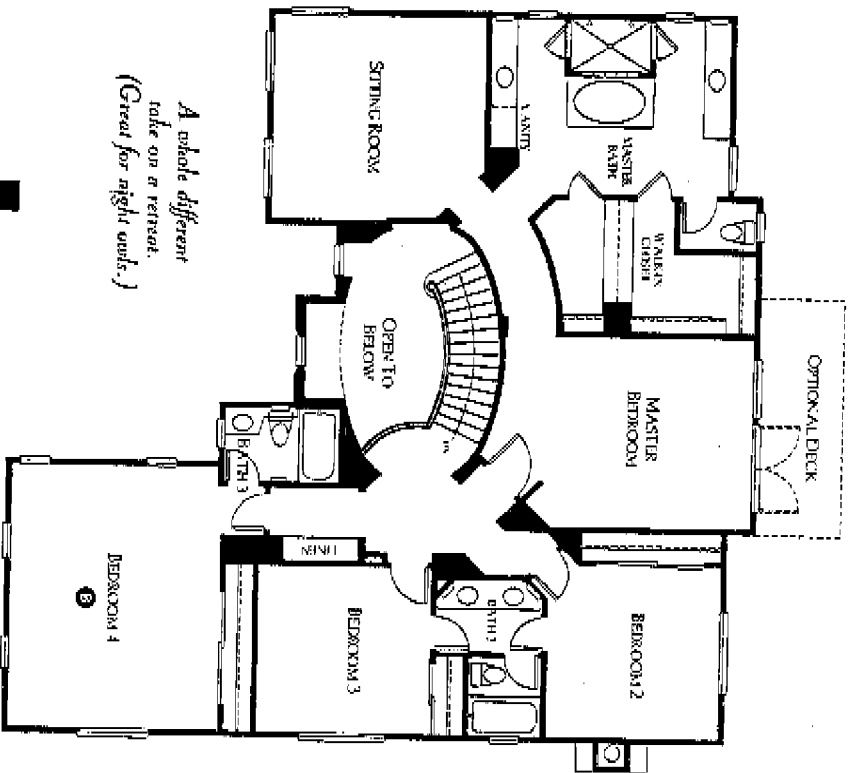
You can opt for a den,
or home office. Either way
you'll get plenty of storage.

Consider installing
an optional veggie sink here.



Placing the garage entrance
on the side puts architectural
interest up front.

A whole different
take on a retreat.
(Great for night owls.)



Give kids
(or your favorite hobby)
a special place.
Designed as you want.

TERRAZA FEATURES

EXTERIOR DETAILING

- Full rear and side yard fencing
- Roll up sectional garage doors with openers
- Waterproof electrical outlet in front and rear of house
- Milgard™ dual-glazed vinyl windows

EXCEPTIONAL INTERIORS

- Fireplace in family rooms
- Raised panel interior doors, including all closets
- RG6 or CAT5 wiring in family room, kitchen, master bedroom and all secondary bedrooms
- Beautifully crafted staircase with stained handrail and painted spindles
- Air conditioning

COURMET KITCHENS

- Raised panel oak cabinetry available in two stain options
- Two large pot drawers
- Island in all plans
- 6" ceramic tile with 6" splash in white or almond
- GE Profile® appliances that include microwave, self-cleaning double oven, dishwasher and 5 burner gas cooktop

- Moer® pull-out faucet for kitchen
- Recessed lighting in the kitchen and nook

MASTER SUITES

- Raised panel oak cabinetry available in two stain options
- 6" ceramic tile countertops with 6" splash available in white or almond
- Separate tiled tub and shower
- Walk-in closet
- Vanity areas in all baths

SECONDARY BATHROOMS & POWDERS

- Solid surface countertops in all 2nd Baths
- Oak cabinetry available in two stain options
- Ceramic tile for tub or shower
- Bath 3 (Plan 1), Powder room (Plan 2), and Bath 4 (Plan 3) all have tiled countertops

TERRAZA OPTIONS

- Trash compactor
- Vegetable sink in kitchen island
- Stainless steel appliance package

Wine rack

Cabinet wood and stain options

Glass for cabinet doors

Countertop options for kitchens and baths, including tubs and showers

Decks off master bedrooms

Mirrored wardrobe doors

Tub enclosures

Security/musik options

Rain gutters

Driveway packages

Electrical options

Coron moulding

Wood window sills

Close organizers for master suites

Jetted tub for master bath

Upgraded stair package

Front door options

Interior paint options

Den options (all plans), bonus room (Plan 3) and master retreat options (Plans 1 & 2)



BROOKFIELD

HOUSES