



Included Features

THE GREENS

Standard Features Within the Home

- Wood-burning fireplaces with gas line supplied
- Hardwood staircase railings (Plans 2, 3, 4)
- Plush carpeting
- Ceramic tile entryway
- Decorator selected light fixtures
- Pre-wired for cable T.V. in all bedrooms, family room and den
- Pre-wired for phone in den, bedrooms, bonus room and kitchen
- Smoke detector
- Copper electrical wiring
- Colonialist raised panel interior doors
- Custom quality rounded drywall corners
- Interior laundry area
- Bulbs installed in all light fixtures for move-in convenience
- Corinthian pullman top in secondary bathrooms
- Air conditioning

Energy Saving Appointments

- Dual glazed windows for energy efficiency
- Economical gas forced air heating
- Energy saver 50 gallon water heater
- R-30 ceiling insulation
- R-13 wall insulation
- Pilotless electronic ignition on furnace and gas cooktop
- Water saving toilets

Exterior Features

- Decorative antique brass entry hardware
- Fireproof concrete roof tiles
- Patio electrical outlet in rear
- Stub out for gas barbecue
- Roll-up sectional garage doors with automatic opener on double door
- Drywall finished garages
- Rear decks with single light French doors (Plans 2, 3, 4) on golf course lots
- Distinctive brick, stone veneer, stucco or siding exterior elevations
- Front yard landscaping with automatic sprinkler system
- Side and rear yard fencing

Kitchen

- Mortar-set ceramic tile counters
- Handcrafted oak cabinetry
- General Electric Potscrubber dishwasher
- General Electric double oven with self-cleaning upper oven
- General Electric microwave oven
- General Electric gas cooktop
- No wax sheet vinyl flooring
- Refrigerator area plumbed for ice maker
- European style faucet
- Gourmet preparation island in kitchen (Plan 3)
- Breakfast nook

Master Suite

- Ceramic tiled separate showers
- Mirrored wardrobe doors
- Mortar-set ceramic tile pullman tops
- Handcrafted oak pullman cabinetry
- Designer selected widespread lever handled faucets

Neighborhood Features

- Public championship golf course designed by Ted Robinson
- Neighborhood park with tot lot
- Equestrian trail nearby

Optional Items

- Fireplace in living room
- Master bedroom sitting areas (Plans 1 & 2)
- Optional den (Plans 3 & 4)
- Optional bedroom (Plan 4)
- Security system
- Appliance upgrades
- Automatic garage door opener for single garage door
- Mirrored wardrobe doors in secondary bedrooms
- Tub enclosure in secondary baths with clear glass
- Intercom
- Sliding door in lieu of window (Plan 1 Master Bedroom)

Effective 5/6/94

RYLAND



All floorplans and exterior renderings are artist's conceptions. Floorplans, exteriors and standard features may vary depending on the elevation and options selected. Room dimensions are approximate. Ryland Homes reserves the right to modify all plans and specifications without notice or obligation.



Price List

THE GREENS

Plan 1

Single Story

3 Bedrooms or 2 Bedrooms Plus Optional Sitting Area.

2 Baths, 2-Car Garage with Storage Area

This comfortable home offers all the conveniences of single-story living. The living room and dining room are designed for entertaining, while the family room with its woodburning fireplace is ideal for quiet evenings at home. The elegant master bedroom suite features an optional sitting area and a generous private bath. The interior service area provides direct access to the two-car garage.

1,787 Square Feet

From \$ 192,990

Plan 2

Two Stories

4 Bedrooms or 3 Bedrooms Plus Optional Sitting Room.

2 1/2 Baths, 3-Car Garage

Soaring ceilings and custom window designs add a touch of drama to this exciting home. The formal living and dining rooms invite elegant entertaining. The bright kitchen and breakfast nook offer the perfect blend of practicality and style. A woodburning fireplace warms the large family room. The sumptuous master suite features a private balcony and a spacious walk-in closet. One of the four bedrooms is available as an optional sitting room. An interior service area and direct access to the three-car garage are added conveniences.

2,082 Square Feet

From \$ 199,990

Plan 3

Two Stories

4 Bedrooms or 3 Bedrooms Plus Optional Den.

2 1/2 Baths, 3-Car Garage

A formal entryway, dramatic staircase and step-down living room highlight this elegant home. A family room with woodburning fireplace, sunny breakfast nook and modern kitchen with a center food preparation island adjoin to form an expansive open area ideal for family activities. The first floor features a bedroom and adjacent bath or an optional den. For convenience, the interior service area provides direct access to the three-car garage.

2,256 Square Feet

From \$ 209,990

Plan 4

Two Stories

4 Bedrooms or 3 Bedrooms Plus Optional Den, Bonus Room or Fifth Bedroom

3 Baths, 3-Car Garage

An excellent choice for growing families, this versatile home offers a first-floor bedroom or optional den and a large upstairs bonus room or optional fifth bedroom. The elegant living room and formal dining room are ideal for entertaining. The kitchen is designed for active families with a large breakfast nook, and the adjoining family room features a woodburning fireplace. The interior service area allows direct access to the three-car garage.

2,430 Square Feet

From \$ 219,990

Plan 5

Single Story

3 Bedrooms with Optional Den or Optional Hobby Room, 2 Full Baths and a Powder Room

Living Room, Family Room, Dining Room, Nook, Large Master Suite with Bay Window and Walk-in Closets, Dual Sink Vanity, Fireplace and Media Center, Central Food Prep Island, Interior Laundry with Sink, Oversized Two-Car Garage.

2,068 Square Feet

From \$ 202,990

1735 Medinah Road, San Marcos, CA 92069, (619) 736-4060

Effective 11/17/95

RYLAND

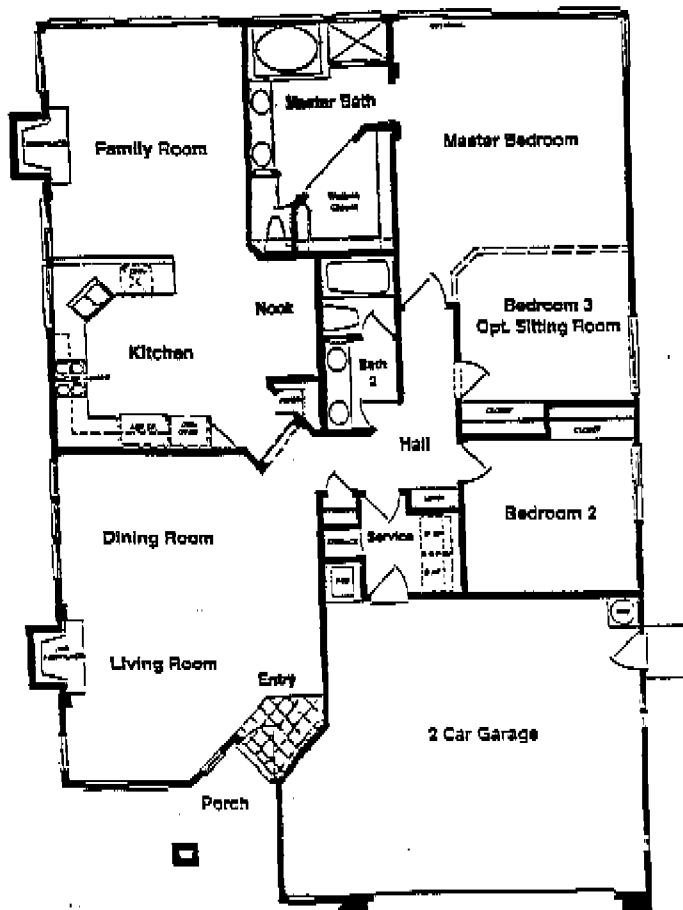


All floorplans and exterior renderings are artist's conceptions. Floorplans, exteriors and standard features may vary depending on the elevation and options selected. Room dimensions are approximate. Ryland Homes reserves the right to modify all plans and specifications without notice or obligation.



Plan 1

THE GREENS



Approximate Living Area:
1,787 Square Feet

Windows may vary per elevation

Effective 3/1/93

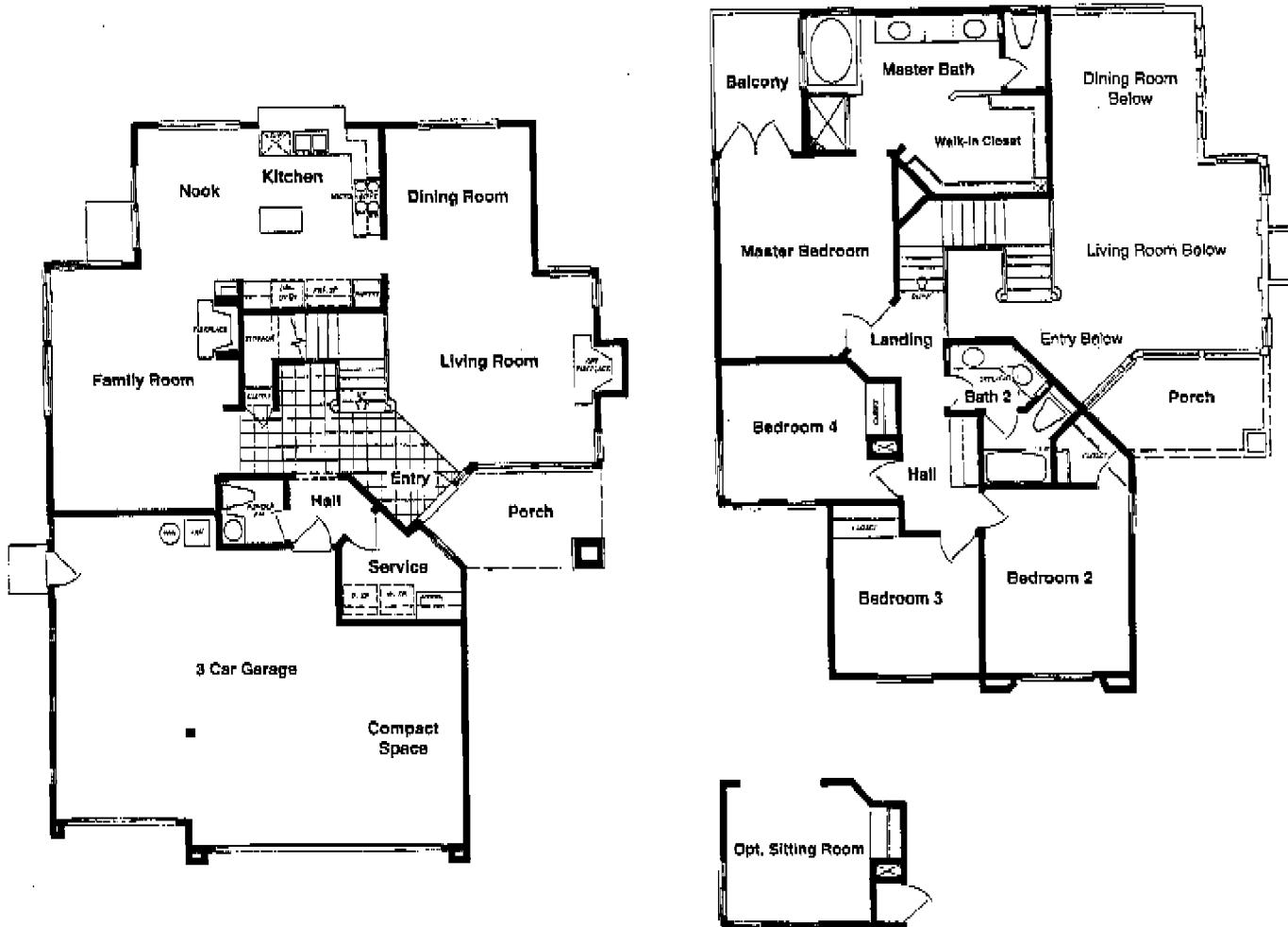


All floorplans and exterior renderings are artist's conceptions. Floorplans, exteriors and standard features may vary depending on the elevation and options selected. Room dimensions are approximate. Ryland Homes reserves the right to modify all plans and specifications without notice or obligation.



Plan 2

THE GREENS



Approximate Living Area:
2,082 Square Feet

Windows may vary per elevation

Effective 5/1/93

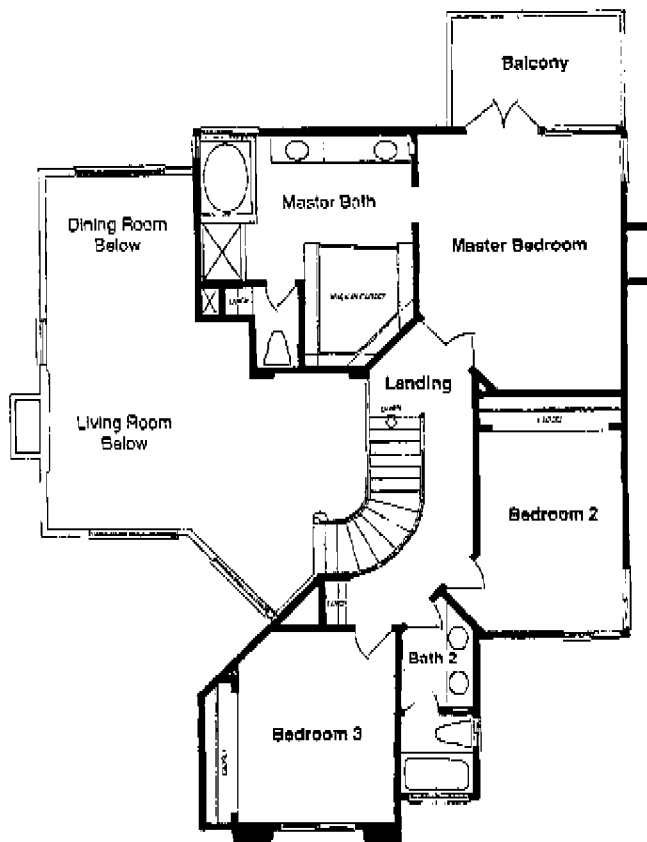
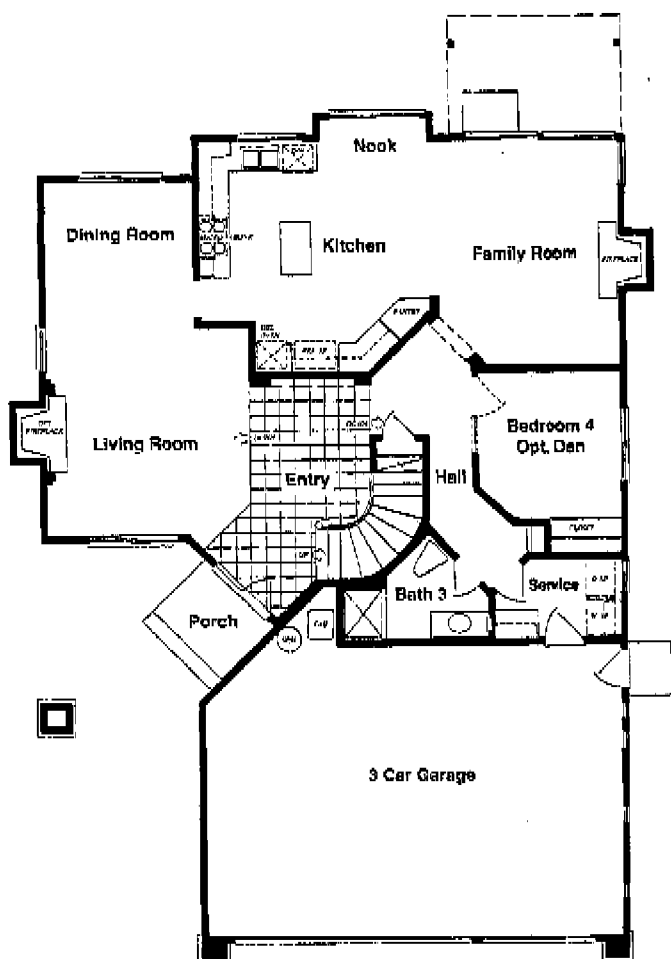


All floorplans and exterior renderings are artist's conceptions. Floorplans, exteriors and standard features may vary depending on the elevation and options selected. Room dimensions are approximate. Ryland Homes reserves the right to modify all plans and specifications without notice or obligation.



Plan 3

THE GREENS



Approximate Living Area:
2,256 Square Feet

Windows may vary per elevation

Effective 5/1/93

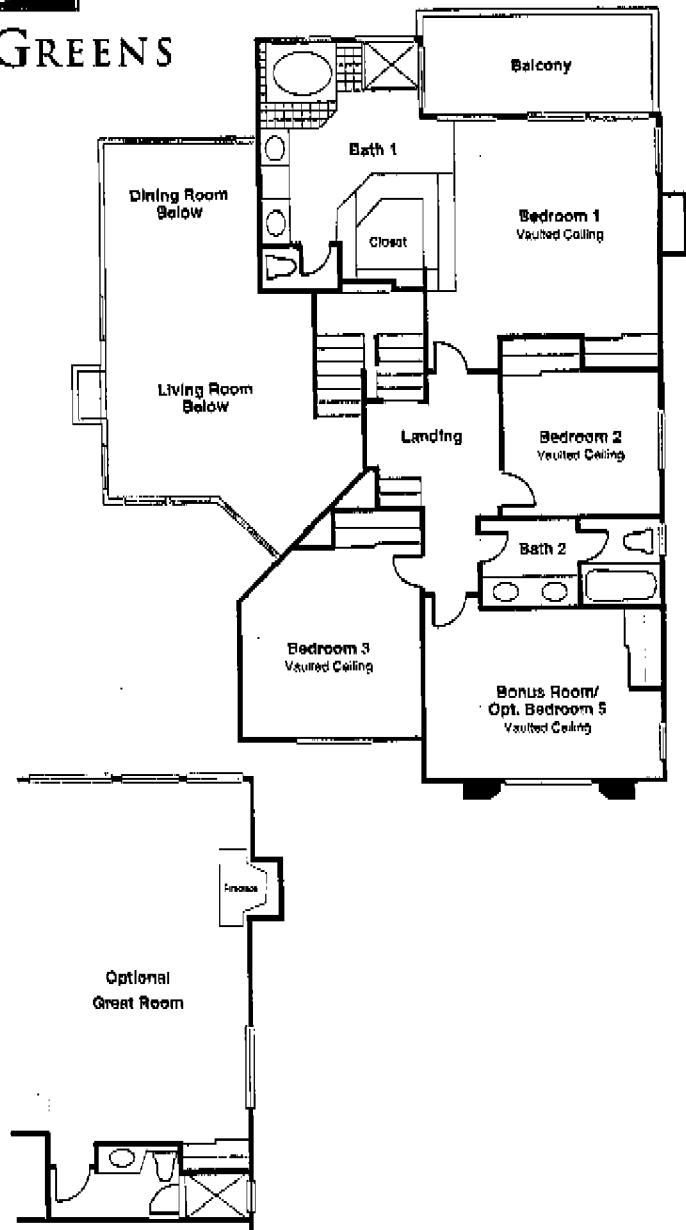
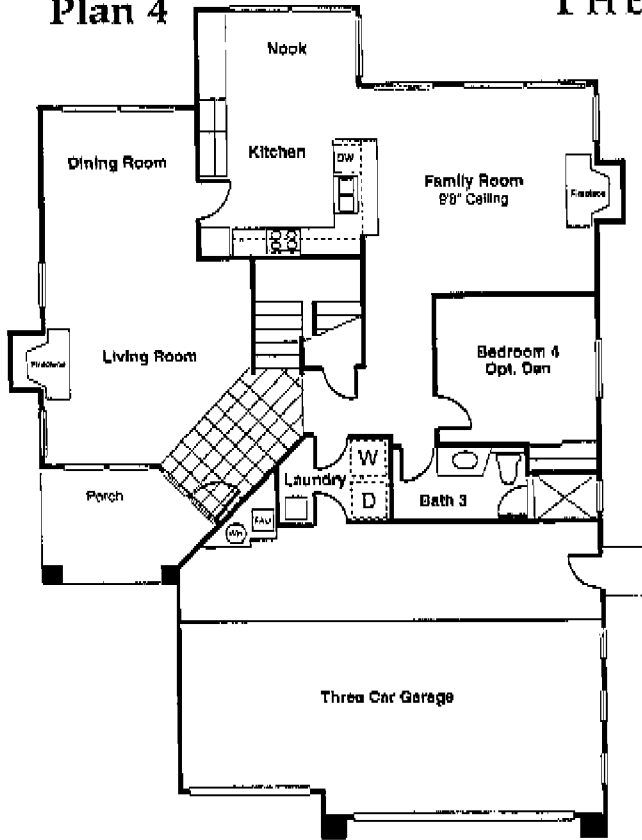


All floorplans and exterior renderings are artist's conceptions. Floorplans, exteriors and standard features may vary depending on the elevation and options selected. Room dimensions are approximate. Ryland Homes reserves the right to modify all plans and specifications without notice or obligation.



Plan 4

THE GREENS



Approximate Living Area:
2,430 Square Feet

Windows may vary per elevation

Effective 5/1/93

RYLAND



All floorplans and exterior renderings are artist's conceptions. Floorplans, exteriors and standard features may vary depending on the elevation and options selected. Room dimensions are approximate. Ryland Homes reserves the right to modify all plans and specifications without notice or obligation.