



FEATURES

EXTERIOR DETAILING

- Decorator selected color schemes
- All stucco Spanish style or designed with Mountain Ledge Stone, Rubble Stone or full Brick exterior accents
- Extensive raised architectural surrounds at windows and doors
- Concrete tile roofs varying in color, shape and appearance keyed to exterior design
- Roomy three-car garage with direct interior access
- Roll-up garage doors with choice of window style
- Garage with drywall and texture finish
- Gas stub for BBQ and waterproof electrical outlet in patio area

DISTINGUISHED INTERIORS

- Generous flooring and decorator allowance
- 8-foot solid mahogany entry doors with optional decorative glass insets
- Elegant antique brass entry lever lockset
- Volume 9-foot ceilings at first and second floor of two-story homes and 10-foot ceilings in single-story homes
- Silent-touch Decora electrical switches
- Raised panel Colonist passage doors and wardrobe sliding doors
- Designer selected elegant dining room and stairwell light fixtures
- All bedrooms, dens and bonus rooms are prewired for both cable TV and extra capacity telephone outlets
- Spacious interior laundry rooms, including utility sink, over and under storage areas and countertops
- Dryer space includes both 220V electric and gas outlets
- Air conditioning. All homes equipped with two separate systems for better zone control
- Generous storage areas throughout
- Extensive linen cabinets and closets
- "Silent Floor" truss joist system in two-story homes
- Metal garage exit door with sill and door bottom for long term maintenance benefits
- All closets include double poles and shelving

THE GOURMET KITCHEN

- Porcelanosa 8" ceramic tile countertops in choice of white or ivory
- Three-compartment cast iron sink with designer selected faucet
- Custom detailed stained oak (optional maple hardwood or White European Style) cabinets with adjustable shelving, roller drawers, hidden hinges, melamine lined interiors and crown molding
- Spacious walk-in pantries (except Plan 1)
- Gas or optional electric KitchenAid cooktop with down draft venting

- 30" KitchenAid electric double oven with convection cooking in upper oven
- Separate KitchenAid microwave oven
- KitchenAid quiet dishwasher
- Center island with cooktop in all plans
- Recessed decorator and fluorescent lighting
- Optional Corian or granite countertops

BATHROOMS

- Handset Porcelanosa ceramic tile vanity tops
- Decorator selected plumbing fixtures
- Shower enclosure includes extra tall doors
- Elegant vanity halogen light fixtures with decorative design
- Upgraded secondary bath Porcelain tubs

MASTER SUITES

- Separate oval tub with custom handset ceramic tile surround
- Ceramic tile shower and countertops
- Separate shower with glass enclosure
- Expansive walk-in closets with double poles and shelving
- Dual sinks with widespread faucets
- Private view deck off upstairs master bedroom in Plans 2, 3 and 6
- Large storage area accessed through master closet (Plans 2 and 3) with option to convert to a room

ENERGY, SAFETY AND EXTRA FEATURES

- Prewired for optional security system
- Prewired for Bose 3 room music system
- White vinyl framed windows and doors with multi dividers at front elevations and dual glazed for energy and sound benefits
- Recirculating hot water system
- R-13 exterior wall insulation and R-30 attic insulation
- 75-gallon water heater
- 2 separate Pilotless gas forced-air heating systems with set-back thermostat
- Copper interior water lines
- 3 Dual-fuel fireplaces per plan (except Plan 6) (gas only Plan 1 family room)
- RWC 10-year Limited Homeowners Warranty
- Prewired for easy installation of ceiling fans in family room and master bedroom
- Floor drains in all laundry rooms
- Garage door openers for double doors with photo cell for safety

PRICE LIST



BARCELONA

Single Story
2,980 Square Feet
Up to 4 Bedrooms, 3 Baths
Family Room
Den Option

372,000

From \$

ANDORRA

Two Story
3,466 Square Feet
Up to 5 Bedrooms, 4 Baths
Storage Room, Den Option
Home Office Option
Bonus Room Option

393,000

From \$

MADRID

Two Story
3,952 Square Feet
Up to 6 Bedrooms, 4 Baths
Storage Room, Den Option
Home Office Option
Bonus Room Option

423,000

From \$

BRAVADO

Two Story
3,347 Square Feet
Up to 6 Bedrooms, 4 Baths
Rerreat Option
Den Option
Bonus Room Option

384,000

From \$



Continental

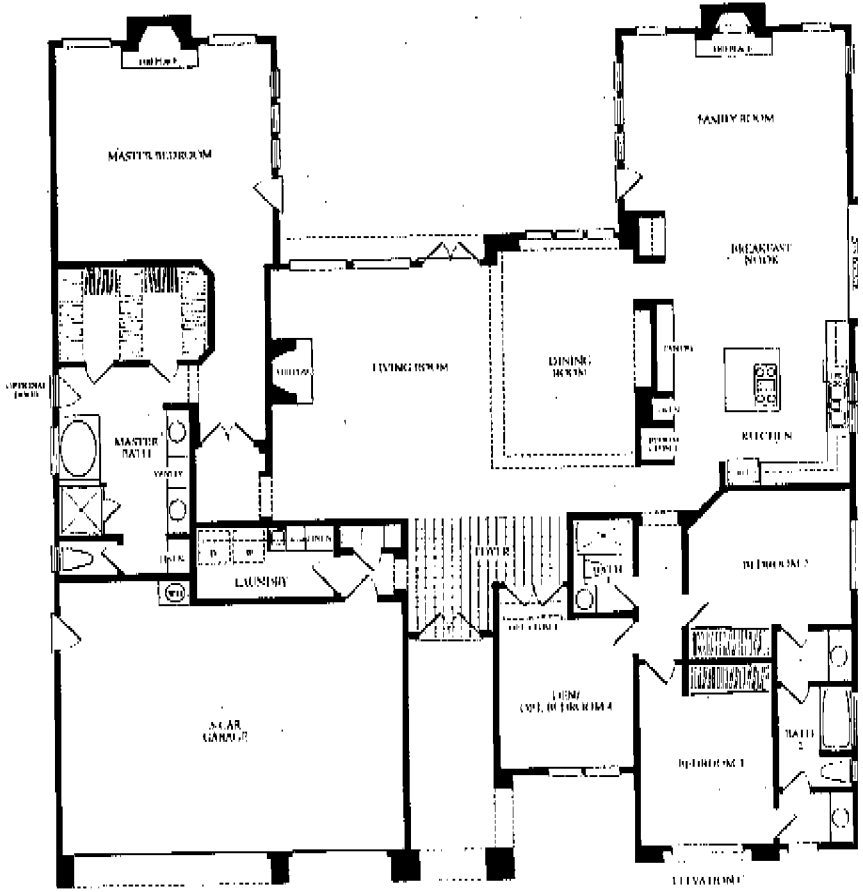
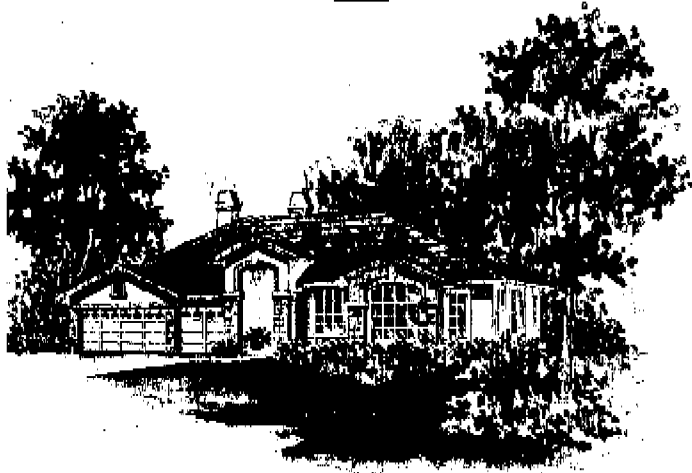
San Diego's leader in luxury home building.

Our model homes are decorated to demonstrate and suggest ideas to you in personalizing your new home. The decorations, including items such as furnishings, window coverings, accent paint colors, wallpaper, paneling, special mirrors, ornamental architectural treatments, special carpeting and floorings, certain appliances and lighting fixtures, patios, patio covers, special walkways, landscaping and fences are for display only and are not included in the purchase price. Continental Homes reserves the right to change plans, materials, products, specifications and prices without notice.

BARCELONA

PLAN 1

Single Story, 2,980 Square Feet,
Up to 4 Bedrooms, 3 Baths,
Family Room, Den Option

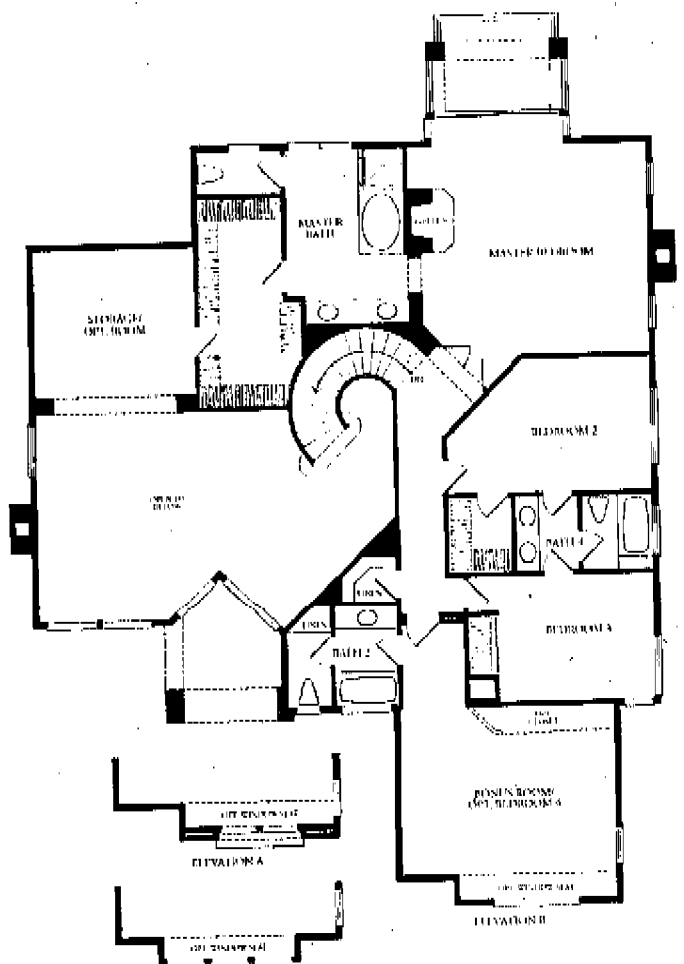
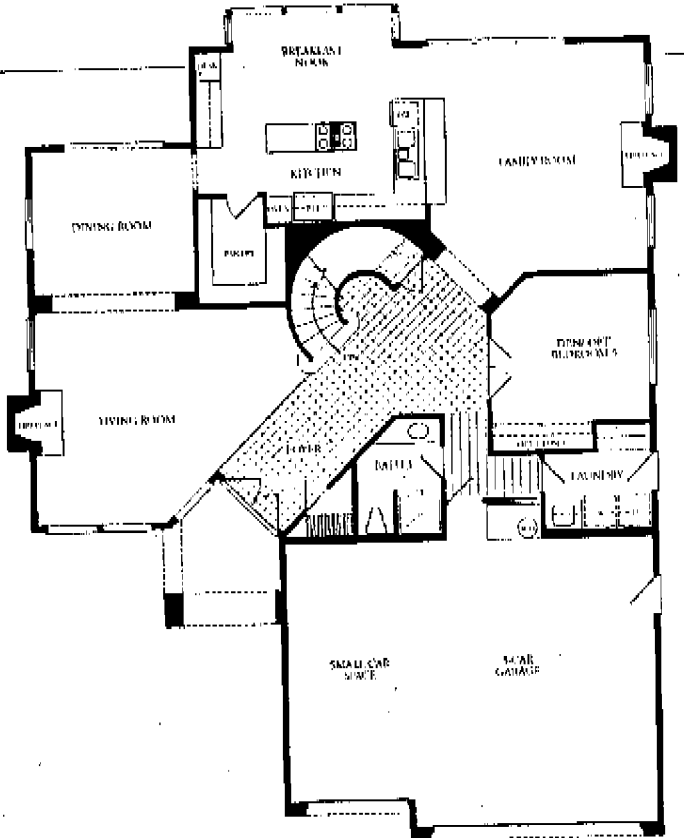


THIS PLAN SHOWN AS A RIVIERA TOWNHOMES PLAN

ANDORRA

PLAN 2

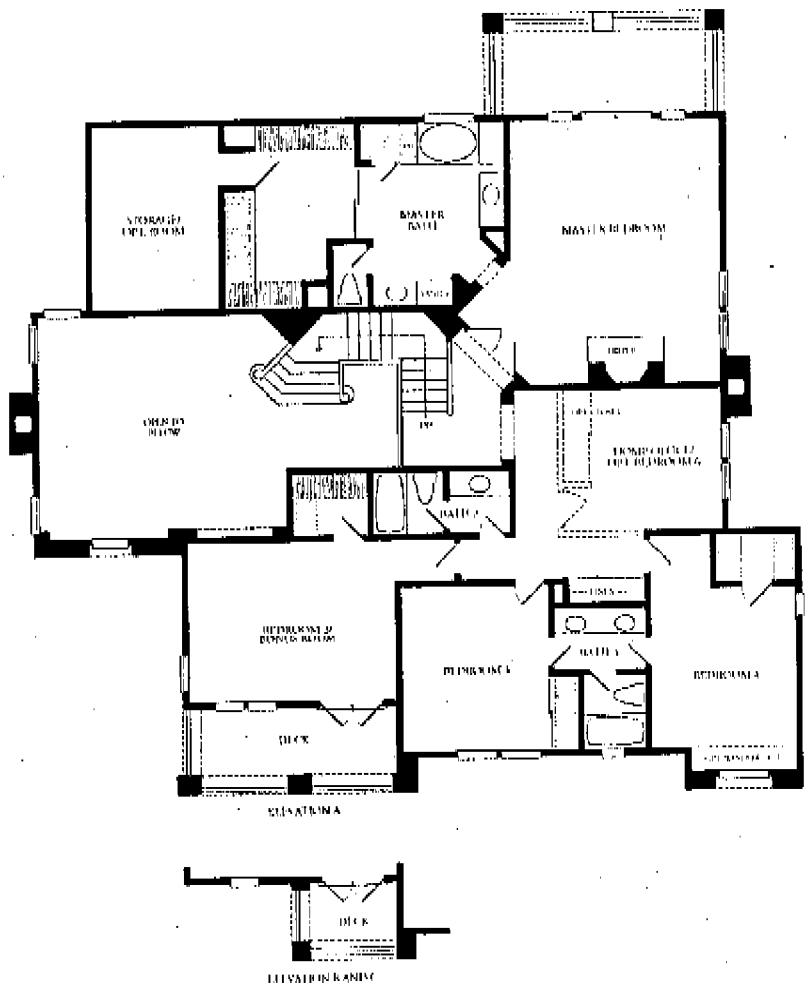
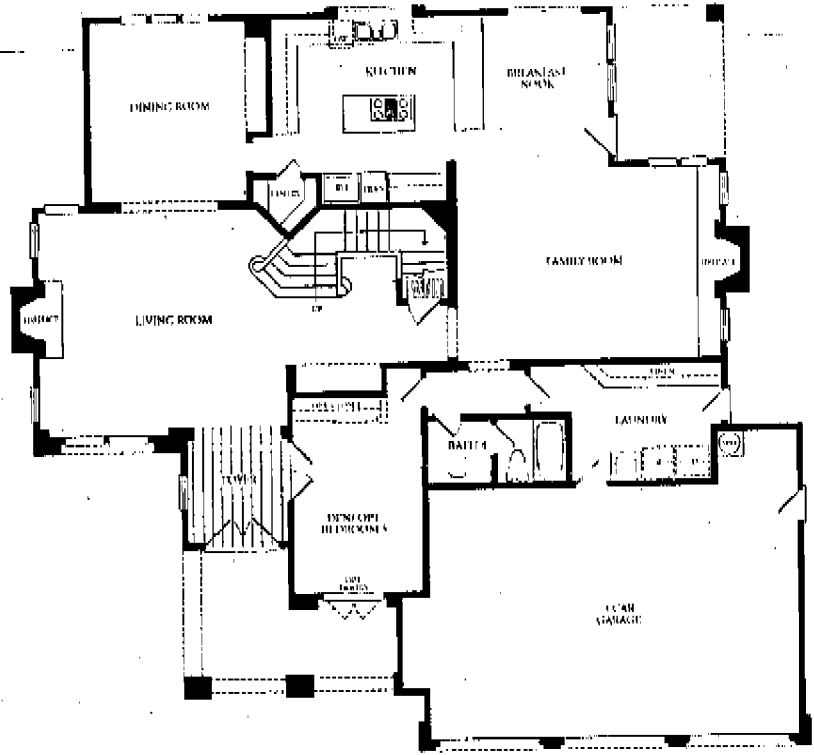
*Two Story, 3,466 Square Feet,
Up to 5 Bedrooms, 4 Baths,
Storage Room, Den Option,
Home Office Option,
Bonus Room Option*



MADRID

PLAN 3

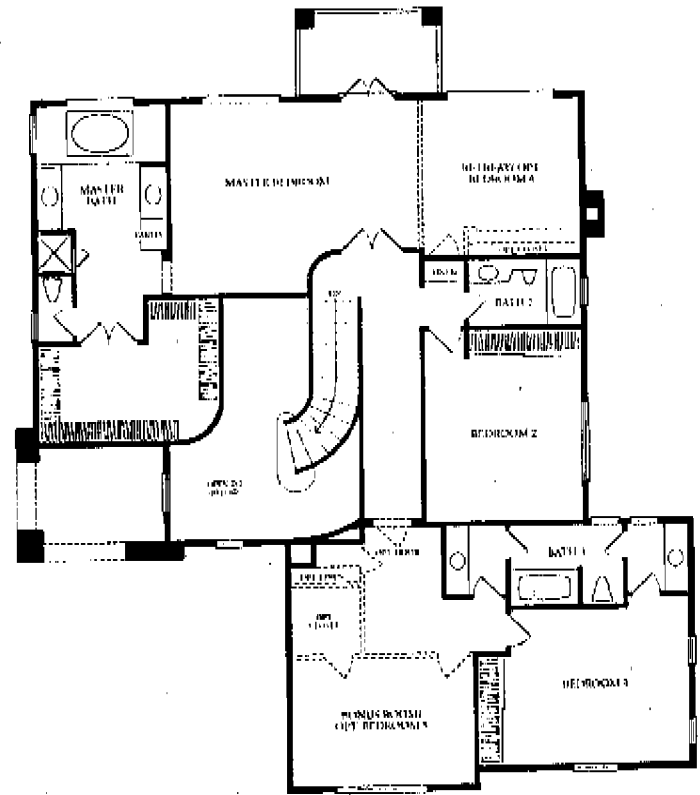
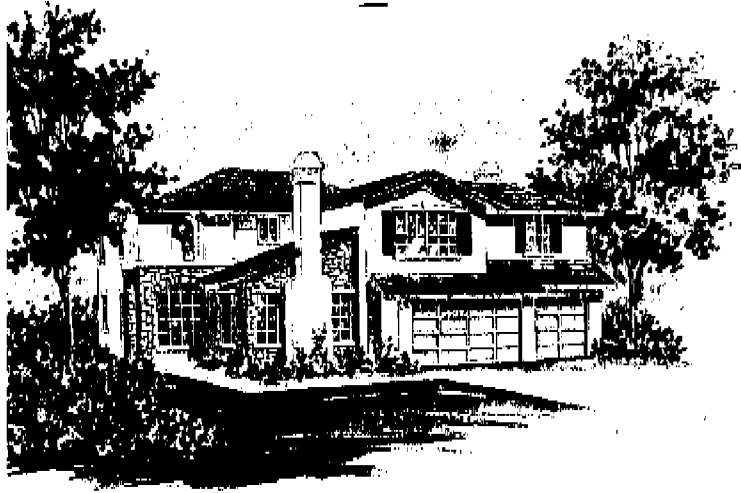
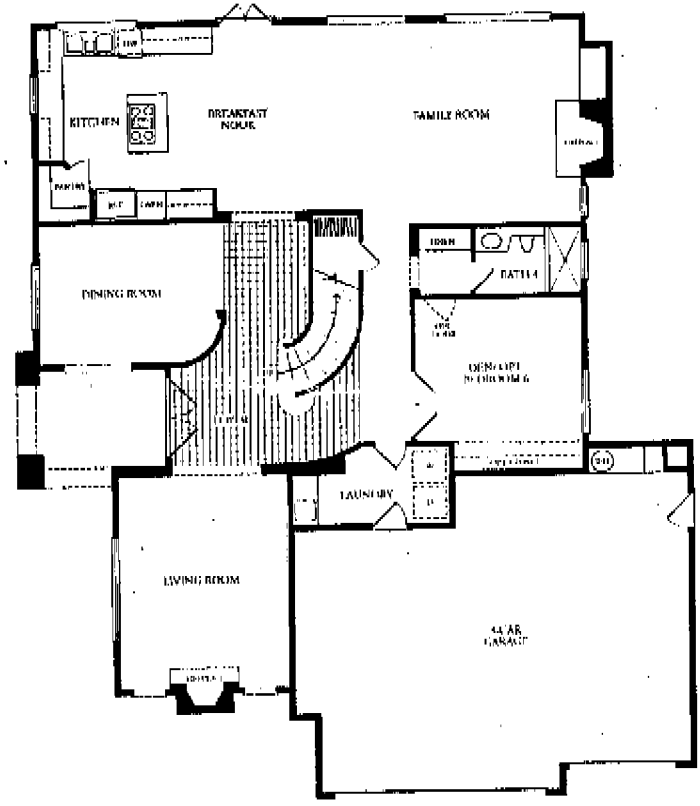
*Two Story, 3,952 Square Feet,
Up to 6 Bedrooms, 4 Baths,
Storage Room, Den Option,
Home Office Option,
Bonus Room Option*



BRAVADO

PLAN 6

*Two Story, 3,347 Square Feet,
Up to 6 Bedrooms, 4 Baths,
Retreat Option, Den Option,
Bonus Room Option*



ELEVATION B

PRICE LIST



Barcelona

	Lot	Plan	Sales Price
Single Story	37	1CR	\$389,000
2980 Square Feet	52	1B	\$399,000
Up to 4 bedrooms, 3 baths	47	1AR	\$405,000
family room and den option	30	1C	\$409,000

Andora

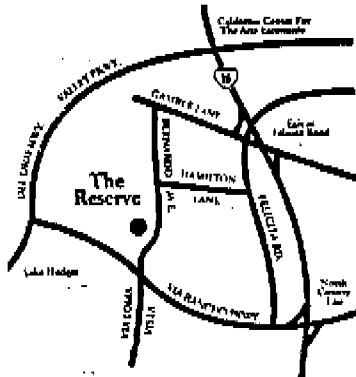
	Lot	Plan	Sales Price
Two Story	43	2B	\$405,000
3466 Square Feet	*45	2C	\$409,000
Up to five bedrooms, 4 baths	42	2AR	\$415,000
storage room, den option	*39	2CR	\$419,000
home office option	*34	2A	\$435,000
bonus room option	*50	2B	\$439,000
* (3636 Sq.Ft.= storage option)	*48	2A	\$449,000

Madrid

	Lot	Plan	Sales Price
Two Story	*36	3BR	\$459,000
3952 Square Feet	33	3AR	\$469,000
Up to 6 bedrooms, 4 baths	*51	3C	\$479,000
storage room, den option			
bonus room option			
* (4106 Sq.Ft. = storage option)			

Bravado

	Lot	Plan	Sales Price
Two Story	46	6BR	\$389,000
3347 Square Feet	40	6AR	\$395,000
Up to 6 bedrooms, 4 baths	38	6A	\$399,000
retreat option	49	6C	\$419,000
den option			



Sales Office 619.781.1162
Open daily 10:00AM-5:30PM

Continental

San Diego's leader in luxury home building.

Our model homes are decorated to demonstrate and suggest ideas to you in personalizing your new home. The decorations, including items such as furnishings, window coverings, accent paint colors, wallpaper, paneling, special mirrors, ornamental architectural treatments, special carpeting and floorings, certain appliances and lighting fixtures, patios, patio covers, special walkways, landscaping and fences are for display only and are not included in the purchase price. Continental Homes reserves the right to change plans, materials, products, specifications and prices without notice.

11-8-96

The builder reserves the right in its sole discretion to make changes or modifications to maps, plans, specifications, materials, features, colors and price without notice. Prices may be increased or decreased at any time. Product type is subject to availability. Optional features may be included at additional cost; some options may not be available depending on the stage of construction. All maps, plans, landscaping and elevation renderings are illustrative artist's conceptions and not to scale.



THE RESERVE AT FELICITA

FEATURES

EXTERIOR DETAILING

- Decorator selected color schemes
- All stucco Spanish style or designed with Mountain Ledge Stone, Rubble Stone or full Brick exterior accents
- Extensive raised architectural surrounds at windows and doors
- Concrete tile roofs varying in color, shape and appearance keyed to exterior design
- Roomy three-car garage with direct interior access
- Roll-up garage doors with choice of window style
- Garage with drywall and texture finish
- Gas stub for BBQ and waterproof electrical outlet in patio area

DISTINGUISHED INTERIORS

- Generous flooring and decorator allowance
- 8-foot solid mahogany entry doors with optional decorative glass insets
- Elegant antique brass entry lever lockset
- Volume 9-foot ceilings at first and second floor of two-story homes and 10-foot ceilings in single-story homes
- Silent-touch Decora electrical switches
- Raised panel Colonist passage doors and wardrobe sliding doors
- Designer selected elegant dining room and stairwell light fixtures
- All bedrooms, dens and bonus rooms are prewired for both cable TV and extra capacity telephone outlets
- Spacious interior laundry rooms, including utility sink, over and under storage areas and countertops
- Dryer space includes both 220V electric and gas outlets
- Air conditioning. All homes equipped with two separate systems for better zone control
- Generous storage areas throughout
- Extensive linen cabinets and closets
- "Silent Floor" truss joist system in two-story homes
- Metal garage exit door with sill and door bottom for long term maintenance benefits
- All closets include double poles and shelving

THE GOURMET KITCHEN

- Porcelanosa 8" ceramic tile countertops in choice of white or ivory
- Three-compartment cast iron sink with designer selected faucet
- Custom detailed stained oak (optional maple hardwood or White European Style) cabinetry with adjustable shelving, roller drawers, hidden hinges, melamine lined interiors and crown molding
- Spacious walk-in pantries (except Plan 1)
- Gas or optional electric KitchenAid cooktop with down draft venting

- 30" KitchenAid electric double oven with convection cooking in upper oven
- Separate KitchenAid microwave oven
- KitchenAid quiet dishwasher
- Center island with cooktop in all plans
- Recessed decorator and fluorescent lighting
- Optional Corian or granite countertops

BATHROOMS

- Handset Porcelanosa ceramic tile vanity tops
- Decorator selected plumbing fixtures
- Shower enclosure includes extra tall doors
- Elegant vanity halogen light fixtures with decorative design
- Upgraded secondary bath Porcelain tubs

MASTER SUITES

- Separate oval tub with custom handset ceramic tile surround
- Ceramic tile shower and countertops
- Separate shower with glass enclosure
- Expansive walk-in closets with double poles and shelving
- Dual sinks with widespread faucets
- Private view deck off upstairs master bedroom in Plans 2, 3 and 6
- Large storage area accessed through master closet (Plans 2 and 3) with option to convert to a room

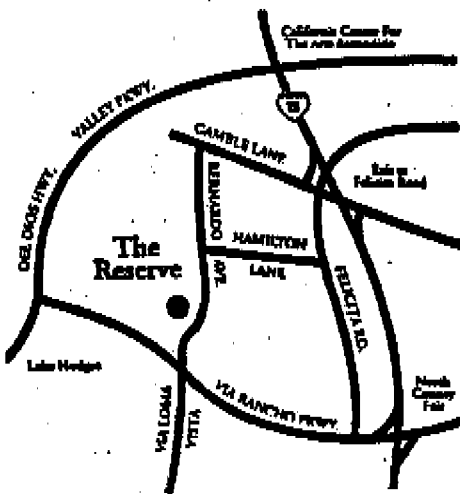
ENERGY, SAFETY AND EXTRA FEATURES

- Prewired for optional security system
- Prewired for Bose 3 room music system
- White vinyl framed windows and doors with multi dividers at front elevations and dual glazed for energy and sound benefits
- Recirculating hot water system
- R-13 exterior wall insulation and R-30 attic insulation
- 75-gallon water heater
- 2 separate Pilotless gas forced-air heating systems with set-back thermostat
- Copper interior water lines
- 3 Dual-fuel fireplaces per plan (except Plan 6) (gas only Plan 1 family room)
- RWC 10-year Limited Homeowners Warranty
- Prewired for easy installation of ceiling fans in family room and master bedroom
- Floor drains in all laundry rooms
- Garage door openers for double doors with photo cell for safety



THE RESERVE

A T F E D I C I T A



Continental

San Diego's leader in luxury home building.

Cathy Paris
Sales Representative
(619) 781-3162 Fax (619) 781-3163