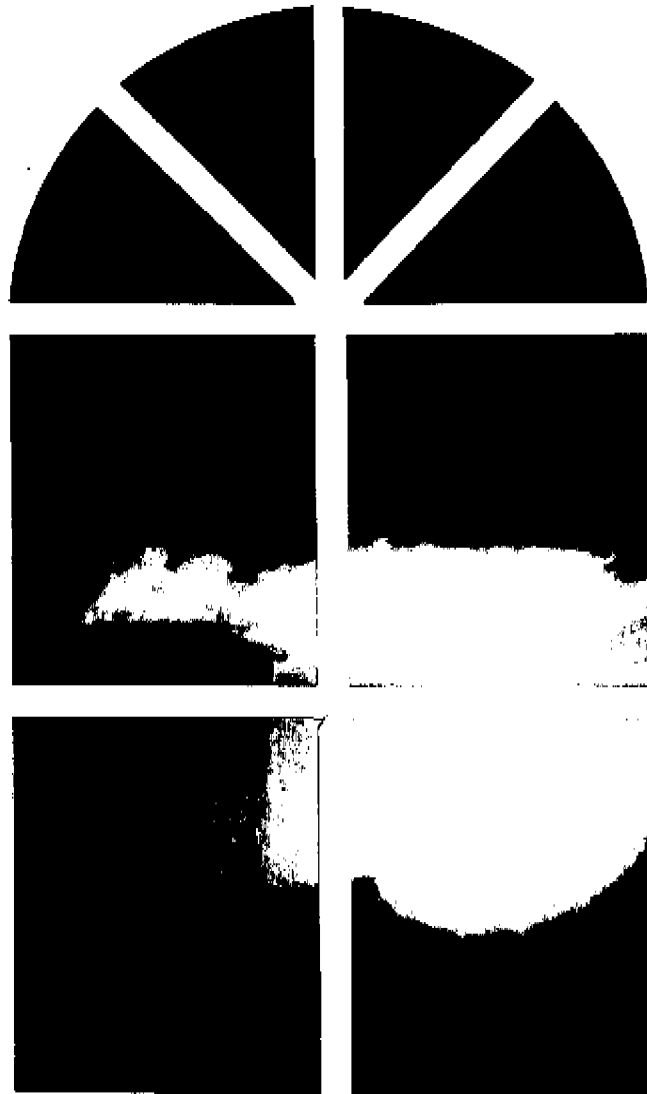


ELLEN BARTHOLD

# THE RIDGES

AT THE HIGHLANDS



## FEATURES

### ARCHITECTURAL DESIGN

Dramatic vaulted ceilings  
 Attractive and durable concrete tile roof  
 Architecturally specified exterior color pallet  
 Distinctive brick/stone accents per elevation  
 Decorator white framed windows with mullion front elevations  
 Three car garage options plans 2, 3, and 4  
 Solarium windows plans 3, and 4  
 Clerestory and accent windows  
 Concrete driveways and walkways

### INTERIOR AMENITIES

Ceramic tile entry  
 Plush carpeting throughout living area  
 Custom quality rounded wall corners  
 Dramatic interior lighting fixtures  
 Wood burning fireplaces with glass doors and gas log lighters  
 Elegant handcrafted balusters with oak handrails  
 Built in plant shelves and art niches (some plans)  
 Raised panel interior doors with detailed casing  
 Service area with 220 electrical and gas connections  
 Polished brass hardware  
 Silent-touch lightswitches

### ENERGY SAVERS

Dual glazed windows throughout home (except solarium and garden window)  
 Fully insulated exterior walls and ceiling  
 Gas forced air furnace with set back thermostat  
 Weather stripping on all exterior doors  
 Water conserving shower heads

### MASTER BEDROOM AND BATH

Woodburning fireplaces with gas log lighter plans 2, 3, and 4  
 Ceramic tile double pullmans, shower walls and tub surrounds  
 Spacious oval tub with separate shower  
 Distinctive Price Pfister widespread polished brass faucets and plumbing fixtures  
 Double china lavs  
 Spacious walk-in closets  
 Clear safety glass shower enclosure  
 Custom oak cabinets

### SECONDARY BATH

Ceramic tile pullmans, shower walls and tub surrounds  
 Cast Iron tubs  
 Distinctive Price Pfister plumbing fixtures

### KITCHENS

Custom recessed ceiling lighting  
 Custom finished oak cabinets  
 Whirlpool gas cooktop  
 Whirlpool self cleaning oven  
 Whirlpool microwave oven  
 Whirlpool multi cycle dishwasher  
 Heavy duty waste disposal  
 Cast iron high low kitchen sink  
 Refrigerator area plumbed for ice maker  
 Spacious pantries  
 Ceramic tile counter tops  
 Garden windows plans 1, 3, and 4  
 No wax sheet vinyl flooring  
 Gourmet island counter plans 2, 3, and 4

### INCLUDED AMENITIES

Air Conditioning  
 Copper interior water lines  
 Mud set tile  
 Interior laundry rooms in all plans  
 Congoleum "value floor" no wax vinyl flooring in kitchen, nook, bath 2, and interior laundry areas  
 Prewired for security system  
 Smoke detectors  
 Prewired for telephone and cable television  
 Underground utilities  
 Wired for garage door opener  
 Raised panel wood entry doors with security hardware  
 Copper wiring  
 Full rear and side yard fencing

Welcome To  
**THE RIDGES**  
AT THE HIGHLANDS

- We are currently sold out of our first two phases.
- Phase II starting prices\* are based upon view, cul-de-sac, size, location, and range as follows:

Plan 1	-	\$302,000	to	\$307,000
Plan 2	-	\$312,000	to	\$342,000
Plan 3	-	\$332,000	to	\$363,000
Plan 4	-	\$348,000	to	\$385,000
- Phase III will go on sale sometime in June, and the homes will be ready for move-in late this year.
- If you wish to be contacted for release information, please be sure to register in the Sales Office.
- Thank you for visiting "*The Ridges*" and considering us for your future home needs.

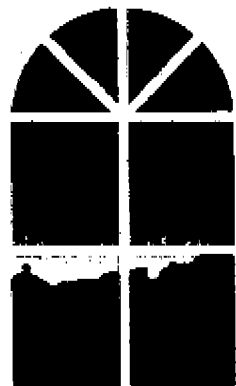
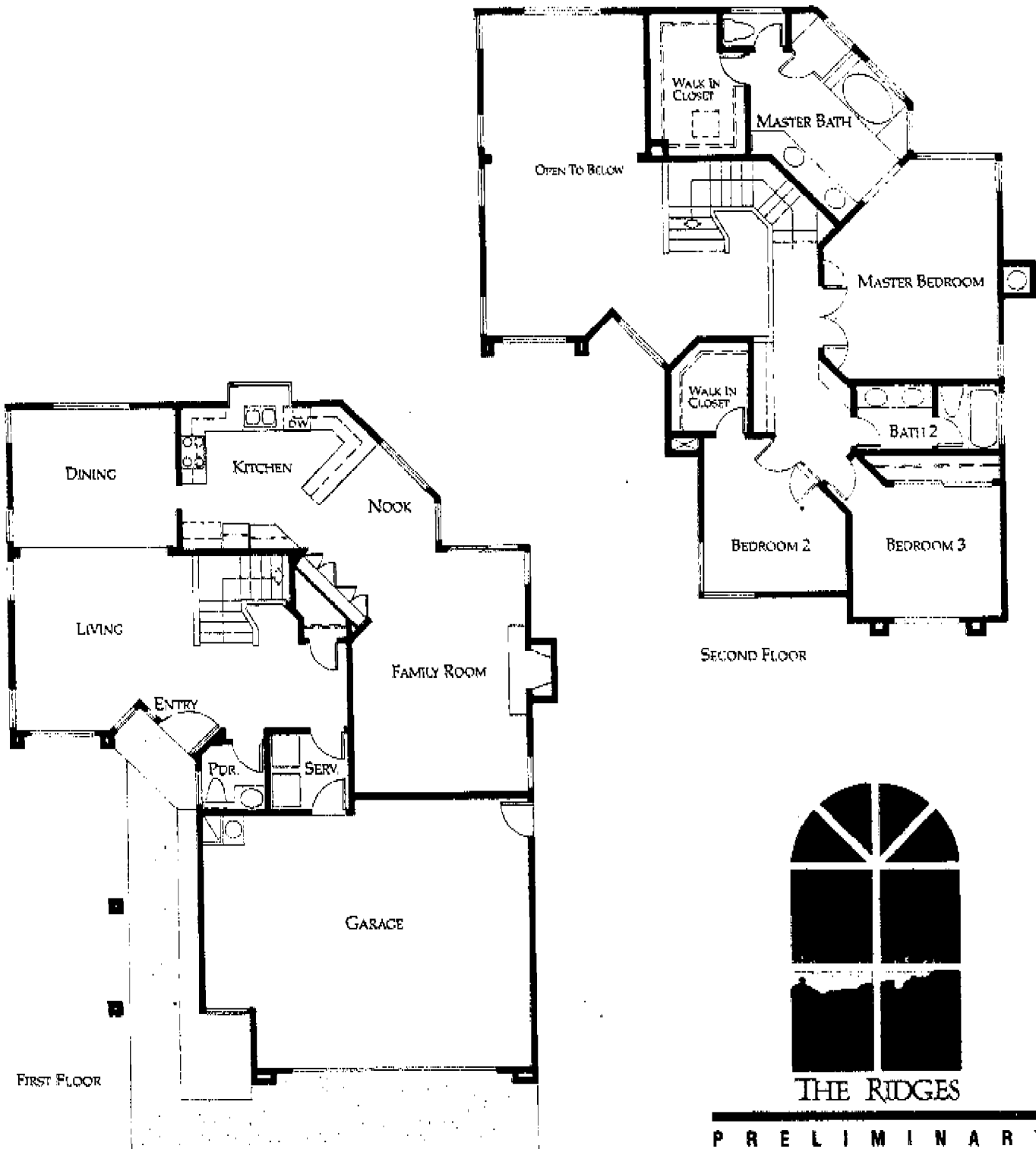
Sincerely,

  
Jim White

BECK DEVELOPMENT  
April 29, 1989  
(619) 485-6701

\* Prices subject to change without notice.

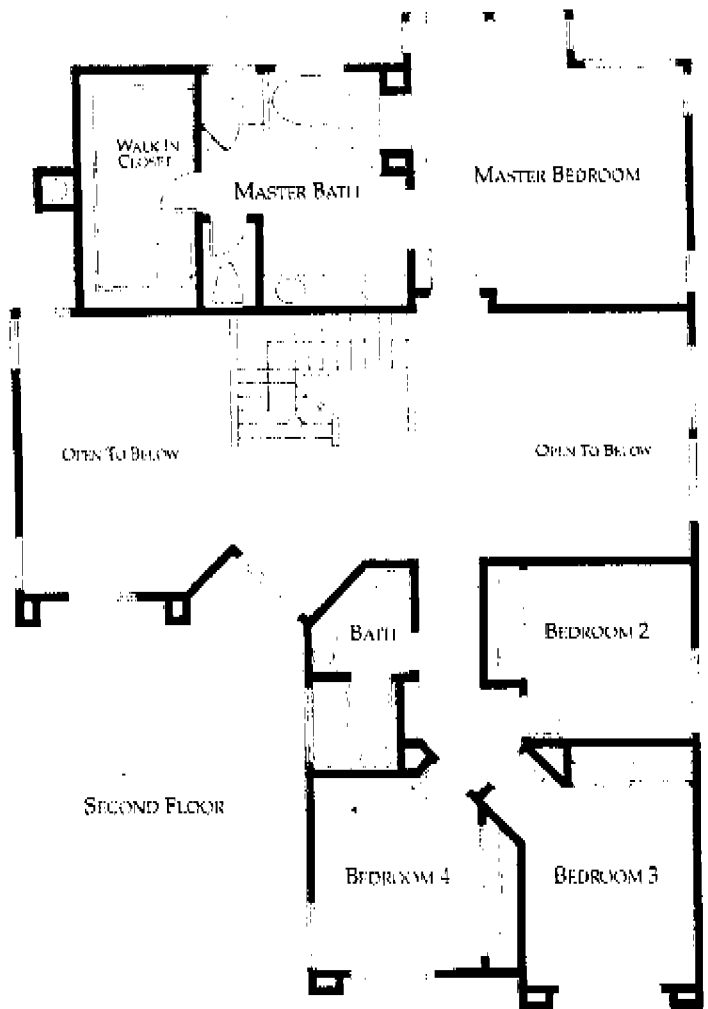
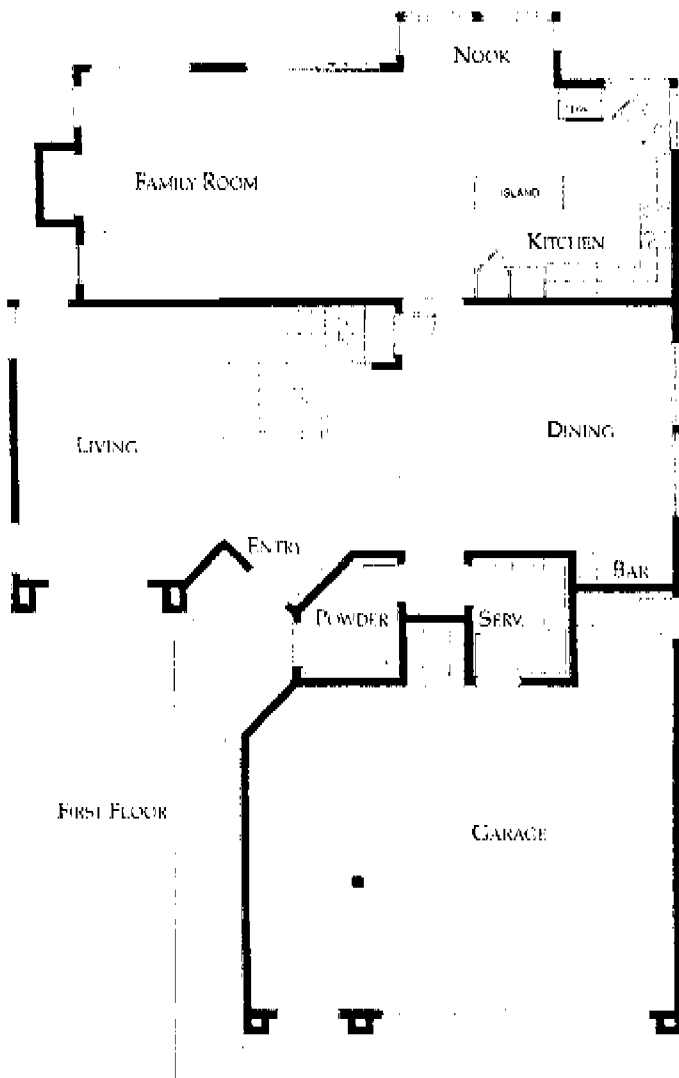
**PALOMAR**  
**2083 S.F.**



**THE RIDGES**

**P R E L I M I N A R Y**

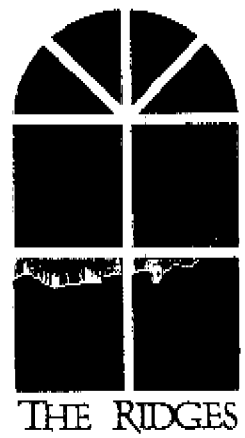
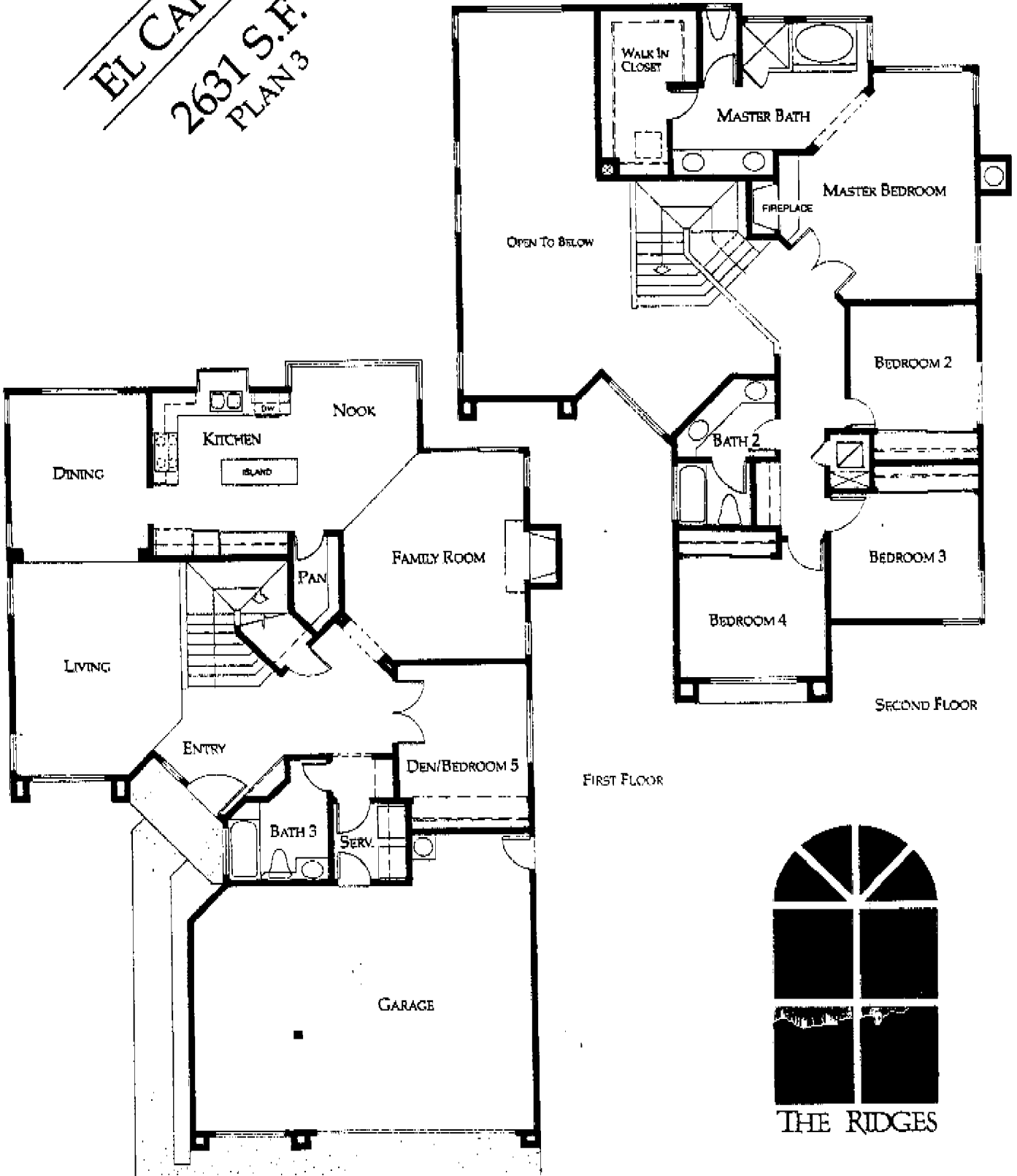
SHASTA  
2487 S.F.



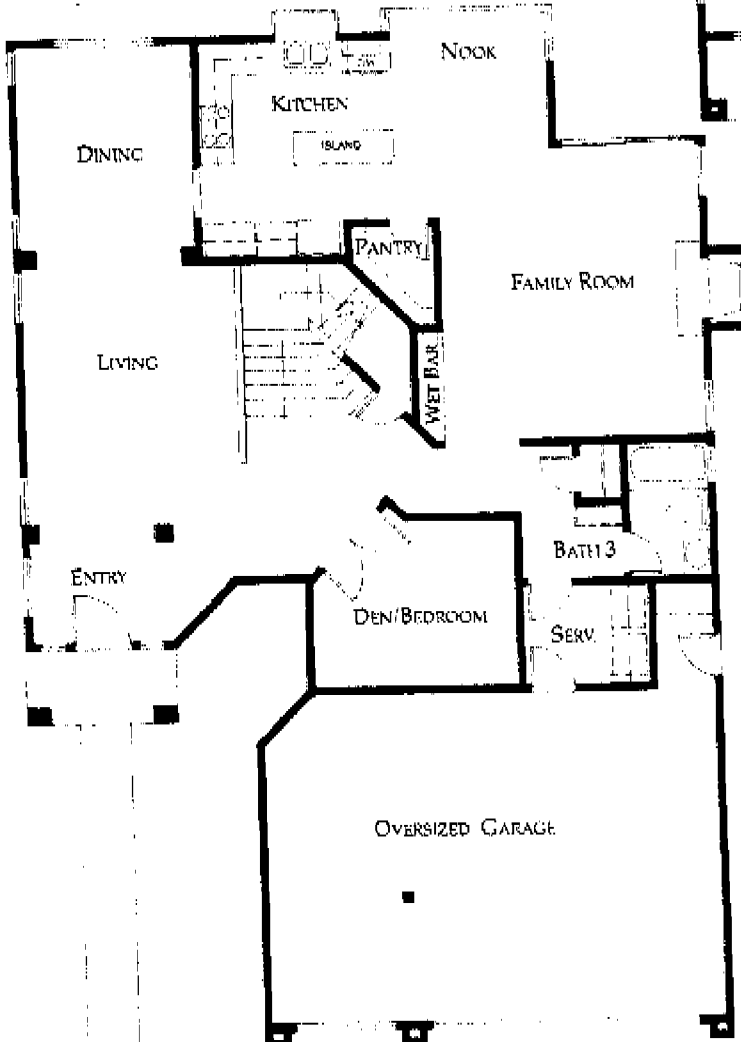
THE RIDGES

P R E L I M I N A R Y

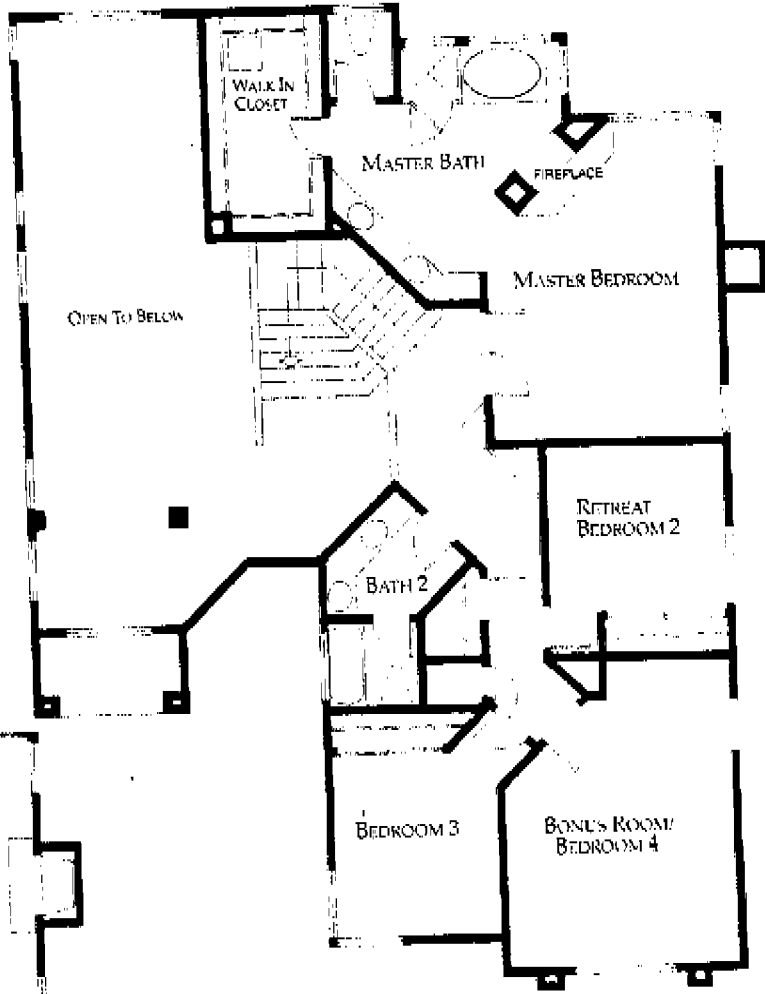
**EL CAPTIAN**  
**2631 S.F.**  
**PLAN 3**



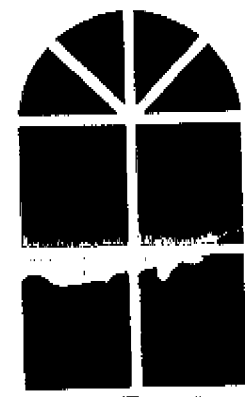
**WHITNEY**  
 APPROXIMATELY  
**2800 S.F.**  
 PLAN 4



1ST FLOOR



2ND FLOOR



THE RIDGES

