



The Terraces

AT WOODCREST HILLS

*** SPECIAL HOMES OF THE WEEK ***

<u>PLAN</u>	<u>LOT</u>	<u>ORIGINAL PRICE</u>	<u>REDUCED PRICE</u>
2AR	207	\$284,990	\$279,990
2C	199	\$304,990	\$289,990

SEE SALESPERSON FOR DETAILS ON BONUS INCENTIVES

THE TERRACES

HORIZONS

PLAN 1

4 Bedrooms or 3 Bedrooms plus a Den
3 Full Baths, Formal Dining Room, and Gourmet Kitchens
2,246 Square Feet

SOLD OUT

PANORAMA

PLAN 2

4 Bedrooms or 3 Bedrooms plus a Bonus Room
2 1/2 Baths, Formal Dining Room, and Gourmet Kitchens
2,381 Square Feet

FROM . . . \$269,990
TO . . . \$294,990

INFINITY

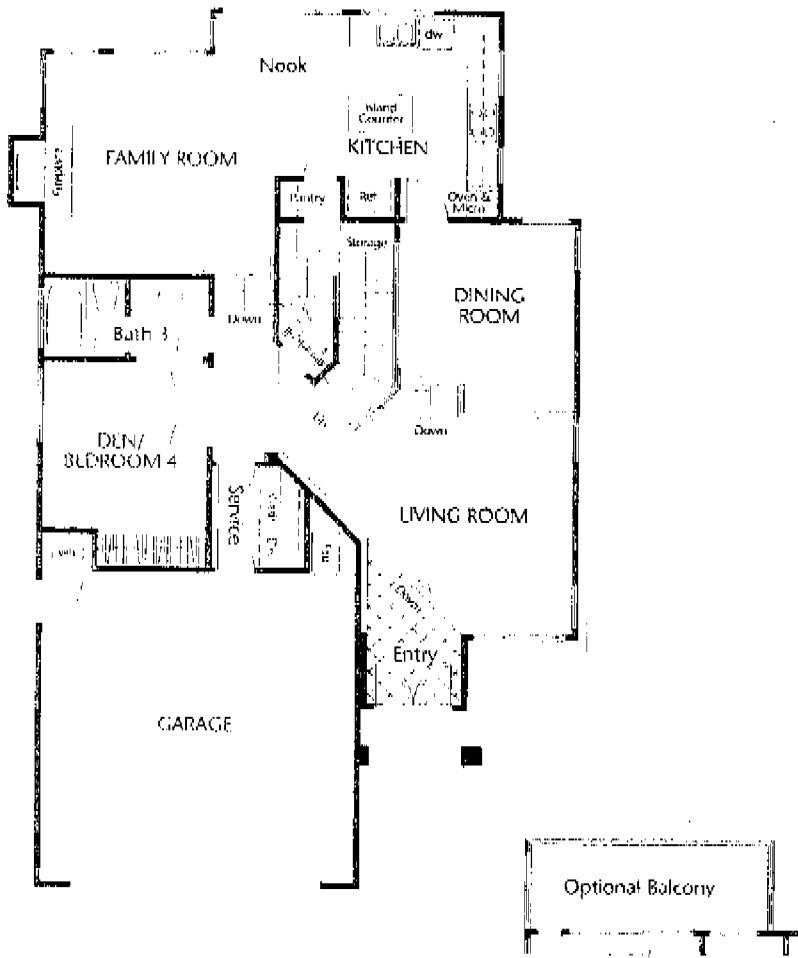
PLAN 3

5 Bedrooms or 4 Bedrooms plus a Bonus Room, 3 Full Baths
Gourmet Kitchens, Formal Dining Room, and 3 Car Garage
2,740 Square Feet

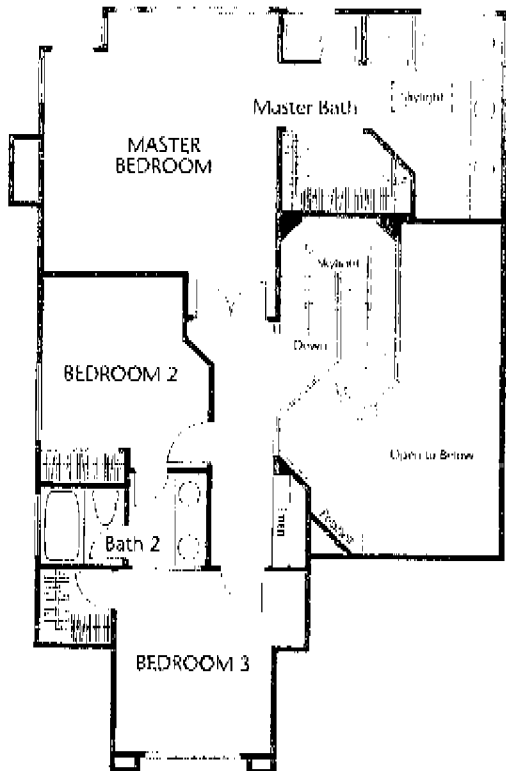
SOLD OUT

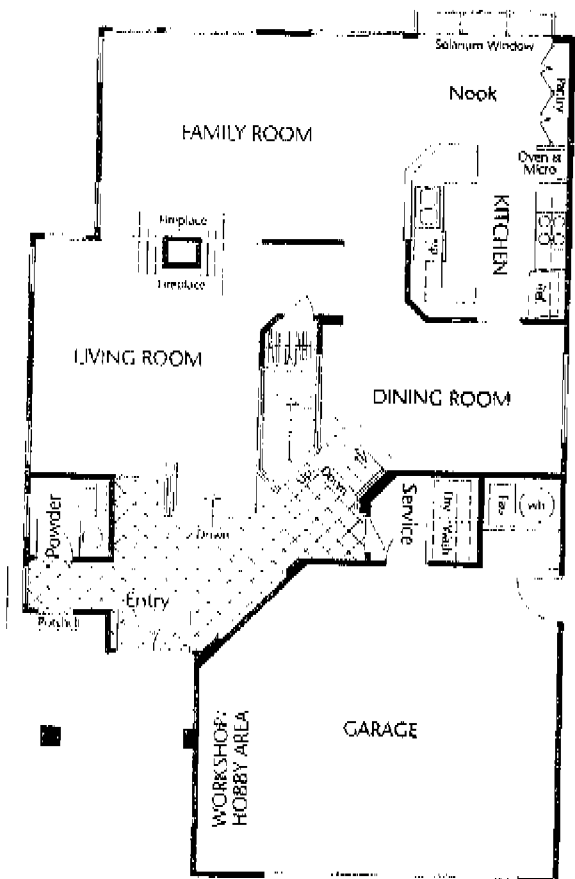
9488 CHABOLA ROAD, SAN DIEGO, CA 92129
PHONE (619) 689-8449

The builder reserves the right to change plans, materials, specifications and color schemes at any time without prior notice. Certain variations in exterior and interior configurations may occur due to normal design constraints and changing governmental requirements. Sales prices are subject to change without notice except for those units formally reserved to buyers.



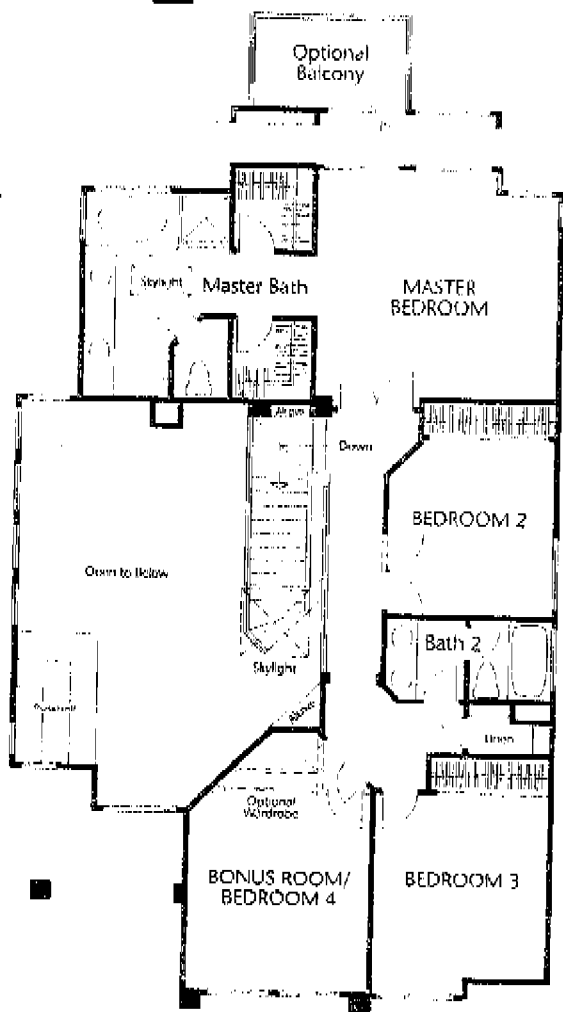
A grand expanse of carefully designed interior space. The broad tiled entry foyer is flanked by the high-cellinged living room and formal dining room. The kitchen, breakfast nook and family room wing is open for casual family living, made even more elegant by a wood-burning fireplace and an island-counter kitchen.





Sunroom Window
 Nook
 Kitchen
 Dining Room
 Service
 Linen Closet
 Entry
 Powder
 Workshop/Hobby Area
 Garage
 Living Room
 Family Room
 Sunroom Window

A picture-perfect setting where roomy
 volume ceilings in the living room
 and formal dining room add light
 and spaciousness to formal
 entertaining. The large ceramic tile
 entry extends a gracious invitation to
 visitors to enjoy your hospitality,
 whether it be a formal dinner party
 or a comfortable evening around the



Optional Balcony
 Master Bath
 Master Bedroom
 Bedroom 2
 Bath 2
 Bedroom 3
 Bonus Room/Bedroom 4
 Optional Wardrobe
 Skylight
 Down
 Open to Below
 Linen

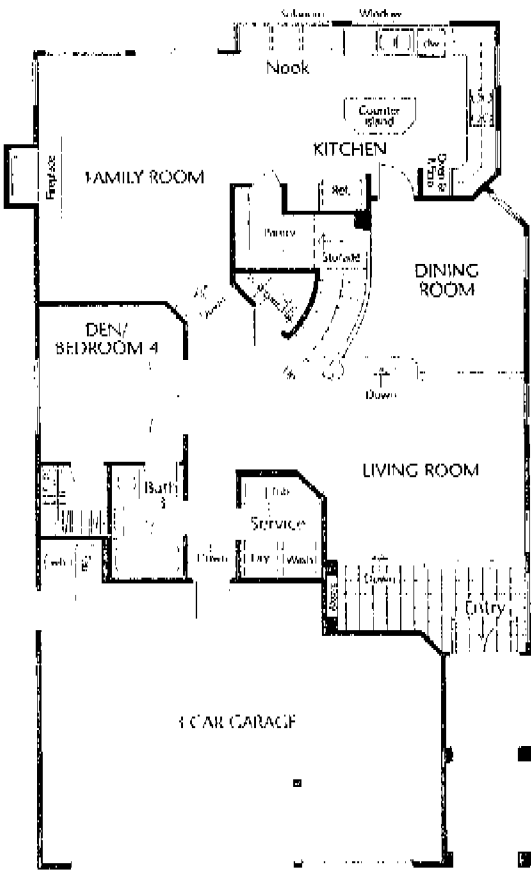


Figure 1386-006-001 Main Level

A dramatic curving staircase

captures the eye of visitors in the

Figure 1386-006-002 Entry

formal ceramic-tiled entry. The

Figure 1386-006-003 Living Room

living room and separate formal

Figure 1386-006-004 Dining Room

dining room with high volume

Figure 1386-006-005 Living Room

ceilings are perfect for entertaining.

Figure 1386-006-006 Living Room

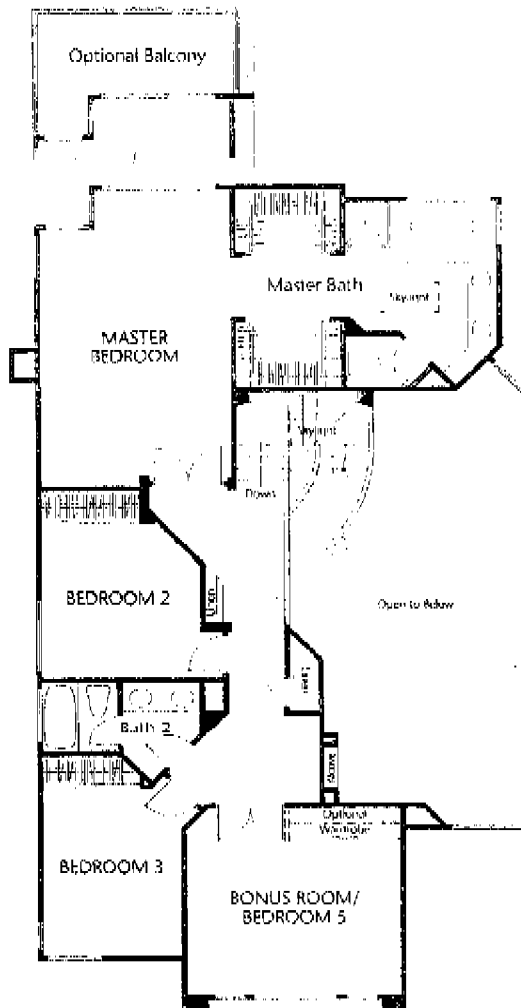
There's plenty of room for the

family activities in the family room

with fireplace and and large kitchen

with nook and solarium window to

let the brilliant sunshine in.



Interior Features

- Dramatic tile entryway
- Impressive stairway with traditional wood banister and oak railing
- Soaring voluminous ceilings with multi-stacked window configurations
- Skylights for natural light
- Built-in plant shelves, art niches and soffit details
- Rounded corner interior walls
- Elegant formal dining room
- Raised panel interior doors with polished brass door knobs
- Woodburning fireplace with gas log lighter valve
- See through fireplace (Plan 2)
- Distinctive lighting fixtures with "Decora" switches
- Trowel finished walls and ceilings
- Quality plush carpeting and easy-care sheet vinyl flooring
- Interior service room with storage cabinetry
- Laundry tub (Plan 3)
- Gas hook-up for dryer, prep for 220-volt
- Copper interior water lines
- Plumbed and ducted for air-conditioning
- Pre-wired for cable TV and telephone
- Smoke detectors
- Roll-up garage doors

Interior Through-out Finishes

- Gourmet preparation island (Plans 1 and 3)
- Decorator 3" x 3" ceramic tile countertops
- Fine oak finish cabinetry
- Walk-in pantry (Plans 1 and 3)
- Top of the line General Electric white "Monogram Series" appliances include:
Built-in microwave and self-cleaning oven
- White-on-white 5 burner gas cook top
- White-on-white multi-cycle dishwasher
- Deluxe white range hood with build-in spice rack
- Informal breakfast nook
- Solarium window (Plans 2 and 3)
- Overhead recessed light fixtures and additional fluorescent counter light
- Double porcelain sink
- Deluxe faucet with spray hose
- Plumbed for automatic ice maker

Master Suite Details

- Spacious walk-in closets
- Ceramic tile vanity tops
- Double china lavs with Moen "Wide-Spread"
- Ivory fixtures
- Fine oak finish cabinetry
- Roman tub (oversized in Plan 3)
- Separate ceramic tile shower
- Full width vanity mirrors
- Custom recessed lighting
- Oversized medicine cabinet
- Low-line elongated water closet

Laundry in All Suites

- Ceramic tile vanity tops with china lavs
- Custom quality "Wide-Spread" Moen Ivory plumbing fixtures
- Fine oak finished Pullmans
- Full size tub with ceramic tile surround
- Full width mirrors
- Low-line elongated water closet

Exterior Features

- Contemporary Mediterranean design
- Villa-style concrete roofs
- Coordinated exterior color palette
- Raised panel wood entry doors
- Garage drywalled and textured
- Gas stub-out for outdoor barbecue
- Three-car garage (Plan 3)
- Garage workshop-hobby area (Plan 2)

Energy Saving Features

- Dual-glazed windows throughout
- Fully insulated walls and ceilings
- Dual gas forced-air heating units with setback thermostats (Plans 2 and 3)
- Heat-saving glass fireplace door
- Gas efficient glass-lined water heater
- Weather stripped exterior doors
- Water saving shower heads and water closet

Options

- Mirrored wardrobe doors
- Air conditioning
- Tub enclosures
- Upgraded flooring
- Balcony off master suite***
- Garage door opener
- Den opening (Plans 1 and 2)
- Bonus room closet (Plans 2 and 3)

***See sales person for details



The builder reserves the right to change plans, materials, specifications, and color schemes at any time without notice. Certain variations in exterior and interior configurations may occur due to normal design constraints and changing governmental requirements. Our models and landscaping have been professionally designed in order to give you ideas as to how each home may be furnished and landscaped. Please contact sales agent concerning standard features and landscaping included in the purchase price. Sales prices are subject to change without notice except for those units formally reserved to buyers. Renderings are artist's conceptions. Due to ever changing market conditions, the builder makes no guarantee, representation or warranty of any kind as to the current or future value of your home, or any future appreciation or depreciation in its value. The seller makes no representation or warranty of any kind concerning the sales price, terms, conditions or incentives if any, for any other home in any phase of this subdivision or any other of the seller's subdivision.