

Windham  
Collection  
Hill

### Features

#### The Interiors

- Vaulted Ceilings in living room, master bedroom (except Plan 4), family room (Plans 1 & 4) and some secondary bedrooms.
- Woodburning fireplace with brick or riverrock face. Fireplaces have gas log lighters, oak mantels, a wood box, and glass doors.
- Large formal dining areas.
- Custom style textured ceilings.
- Wood staircase railings.
- Ceramic tile or wood parquet entries.
- Decorator sheet vinyl in kitchen, baths and laundry rooms.
- 100% nylon carpeting in other areas.
- Decorator selected lighting fixtures.
- Gas forced air heating with setback thermostat.
- Prewired for cable television and telephone.
- Smoke detector alarm.

#### The Kitchens

- Black glass and brushed chrome double oven range (microwave upper oven, self-cleaning lower oven). Plan 4 has a "Jenn-Aire" range with barbecue grill.
- Dishwasher.
- Garbage disposal.
- Corian counters detailed with oak inlay.
- Cast iron kitchen sink.
- European style cabinetry.
- Greenhouse window.
- Spacious pantry.
- Luminous ceilings.
- Refrigerator area plumbed for icemaker with recessed box.

#### The Master Suites

- Vaulted ceilings (except Plan 4).
- Large walk-in closets with section double-poled and additional shelving.
- Double vanity lavs.
- Antique bronze "wide spread" plumbing fixtures.
- Mosaic tile countertops and shower.
- Greenhouse window in shower.

#### The Secondary Baths and Bedrooms

- Corian bath countertops.
- Steel tub with ceramic tile surround.
- Custom quality "wide spread" chrome plumbing fixtures.
- Double vanity lavs (Plans 3 and 4).
- Custom style makeup lights.
- All bedroom closets have double-poled section with additional shelving.

#### The Laundry Rooms

- Cabinets above washer and dryer.
- Laundry tub (Plans 3 and 4).
- Rear yard access door (Plans 3 and 4).
- 220-volt and gas stub for dryer.
- Recessed washing machine connection.

#### The Exteriors

- Mahogany entry doors with furniture finish.
- Dead bolt front door locks.
- Deco tile pot shelves on Spanish elevations.
- Sunburst windows on selected elevations.
- Tile or concrete shake roofs.
- All A Spanish elevations have mission stucco finish.
- All B Spanish elevations have smooth texture stucco finish.
- Painted bronze finish on all window frames.
- Full exterior wall and ceiling insulation.
- Underground utilities.

#### The Options

- Three-car garages on pre-selected lots.
- Electric garage door openers.
- Mirrored wardrobe doors.
- Air conditioning.
- Tub/shower enclosures.

### Prices

#### The Waterford

Plan 1  
1717 Square Feet  
3 Bedrooms, 2 Baths  
\$139,900 to 156,900

#### The Tiffany

Plan 2  
1891 Square Feet  
3 Bedrooms, 2 1/2 Baths  
\$146,900 to 157,900

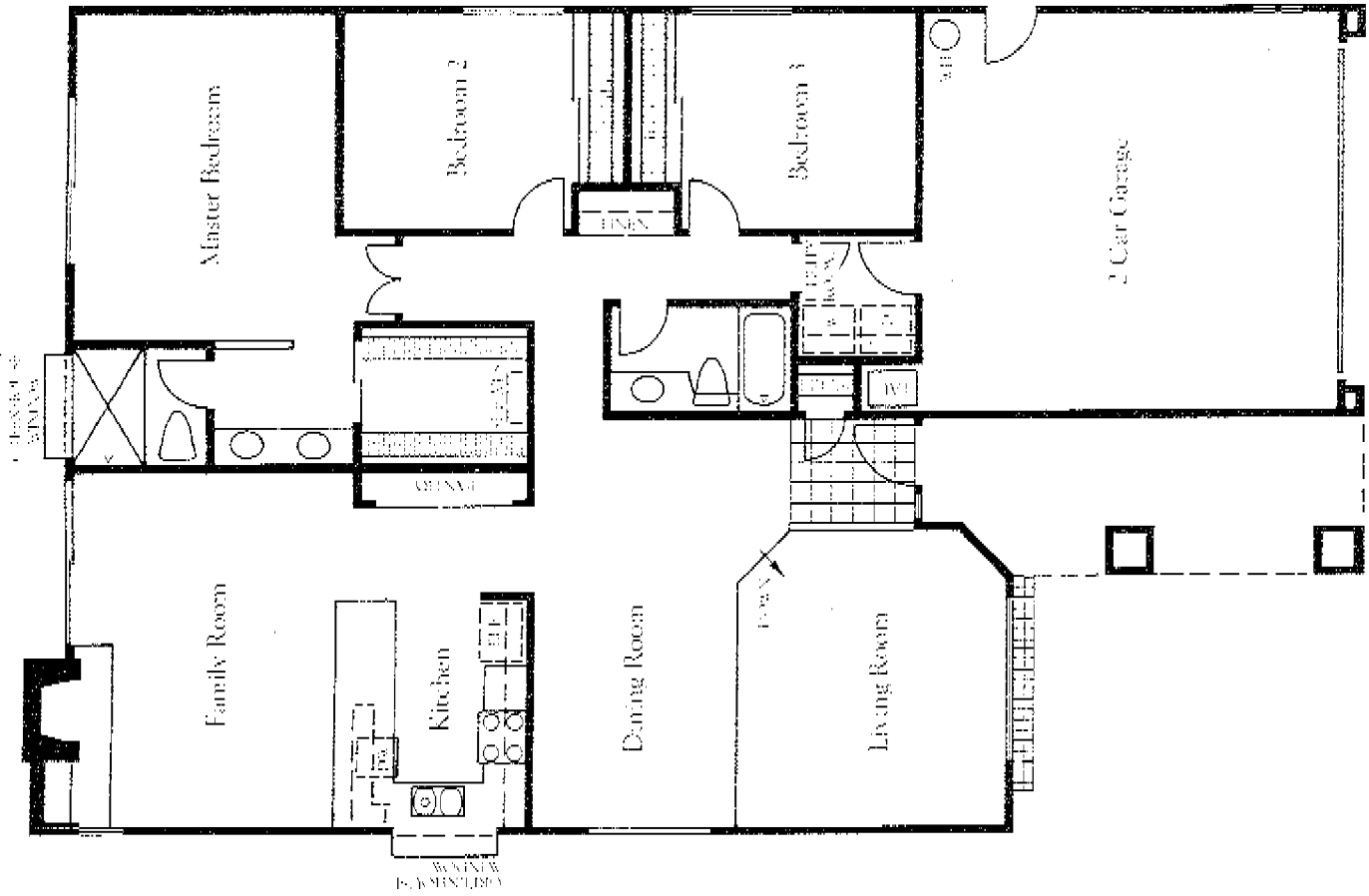
#### The Sterling

Plan 3  
2000 Square Feet  
4 Bedrooms, 2 1/2 Baths  
\$155,900 to 178,900

#### The Baccarat

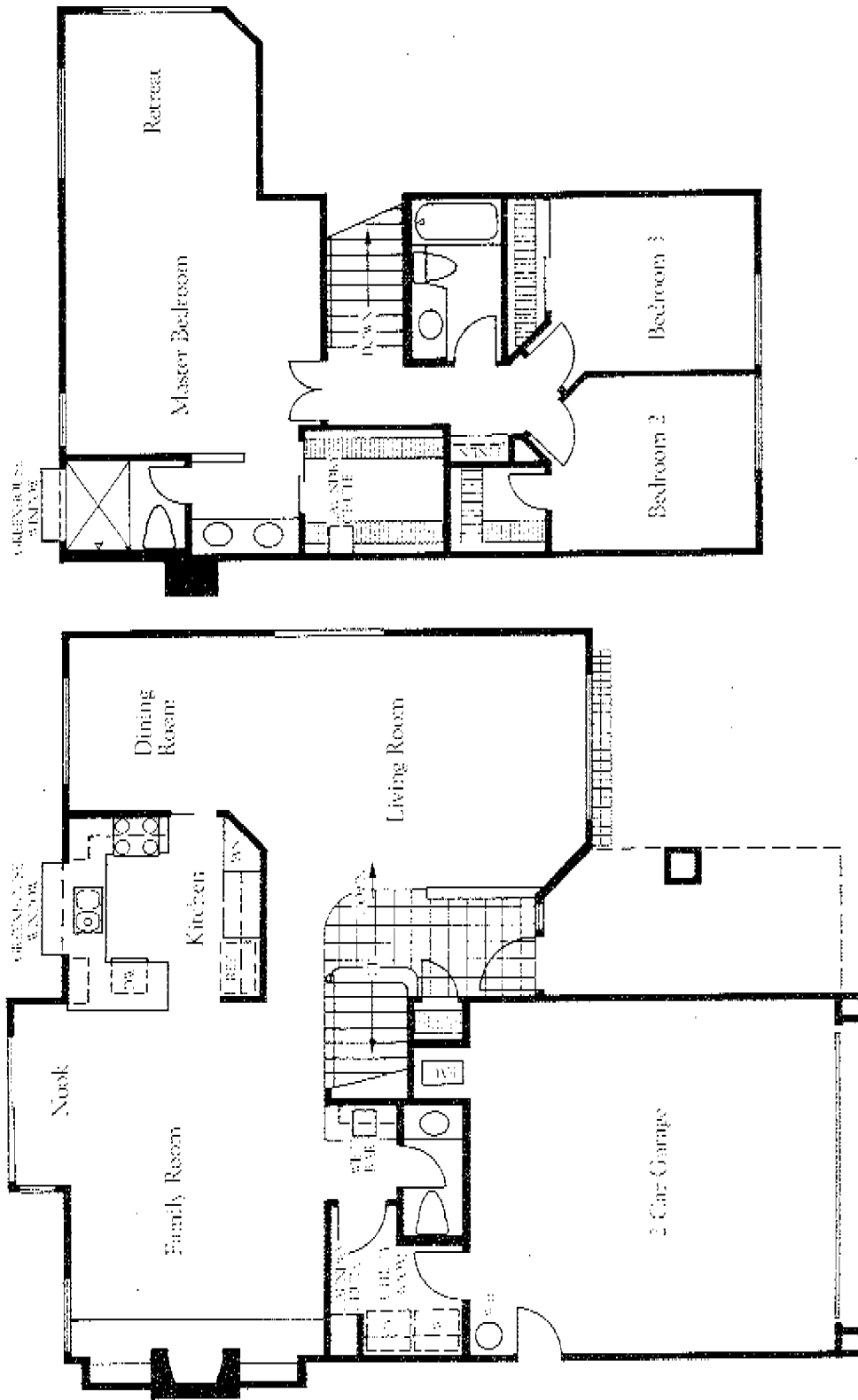
Plan 4  
2396 Square Feet  
4 Bedrooms, 2 1/2 Baths  
With Bonus Room  
\$165,900 to 199,900

Due to changes and improvements resulting from The Buile Corporation's continuing research and development program, we reserve the right to alter product or design without notice or obligation prior to completion of unit and/or escrow.

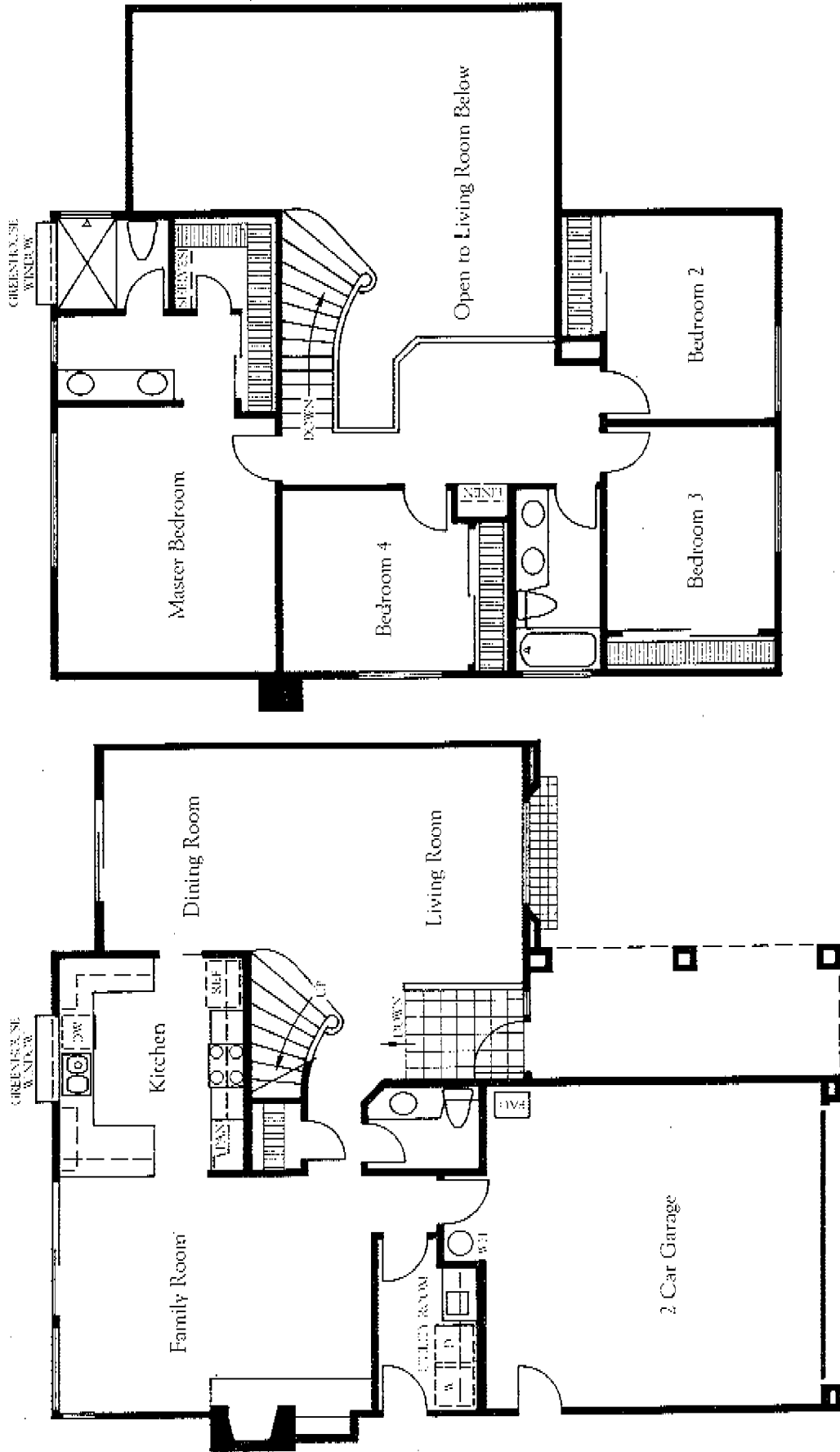


Plan 1  
 1717 Square Feet  
 3 Bedrooms, 2 Baths

Plan 2  
1891 Square Feet  
3 Bedrooms, 2 1/2 Baths

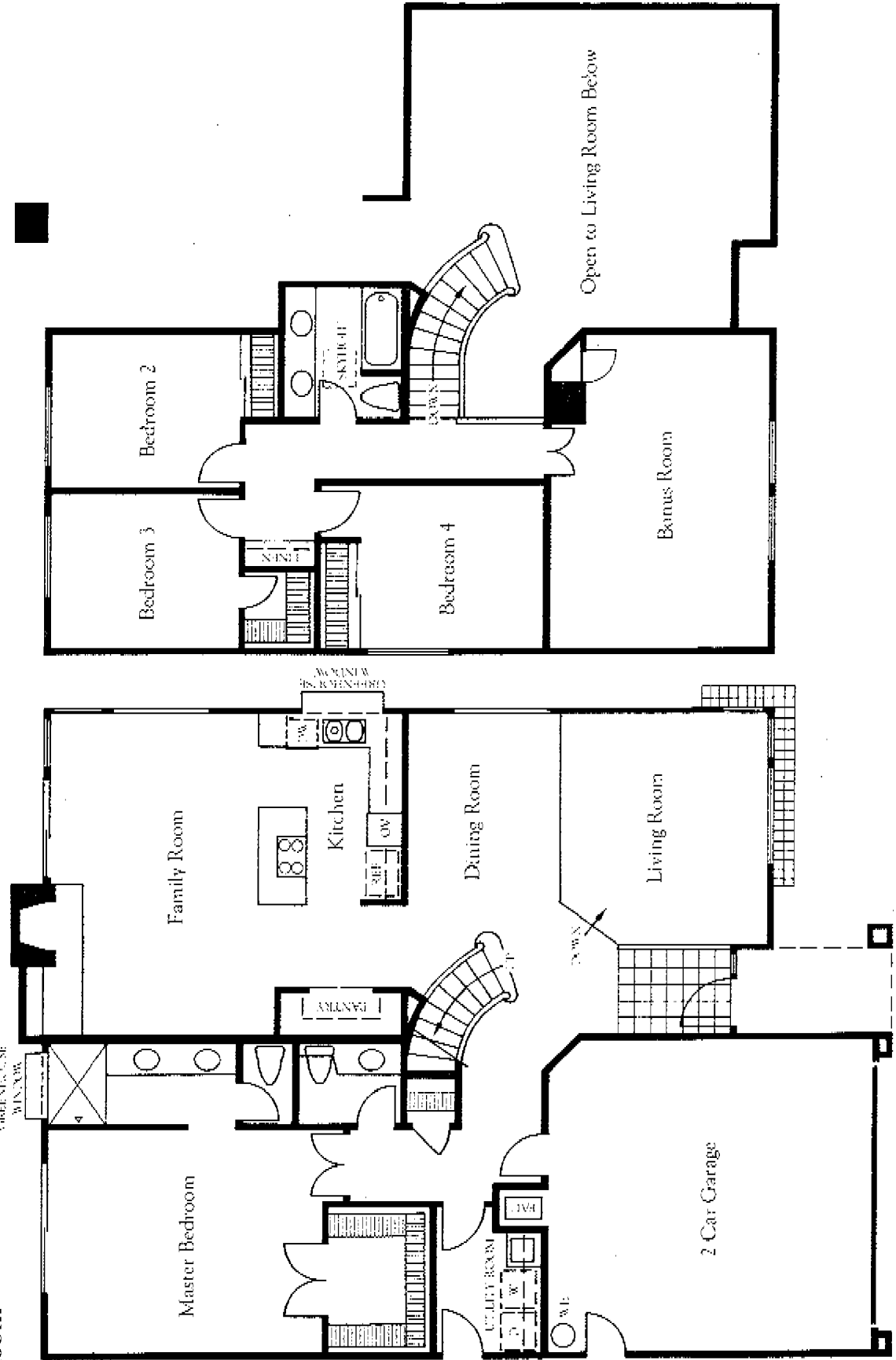


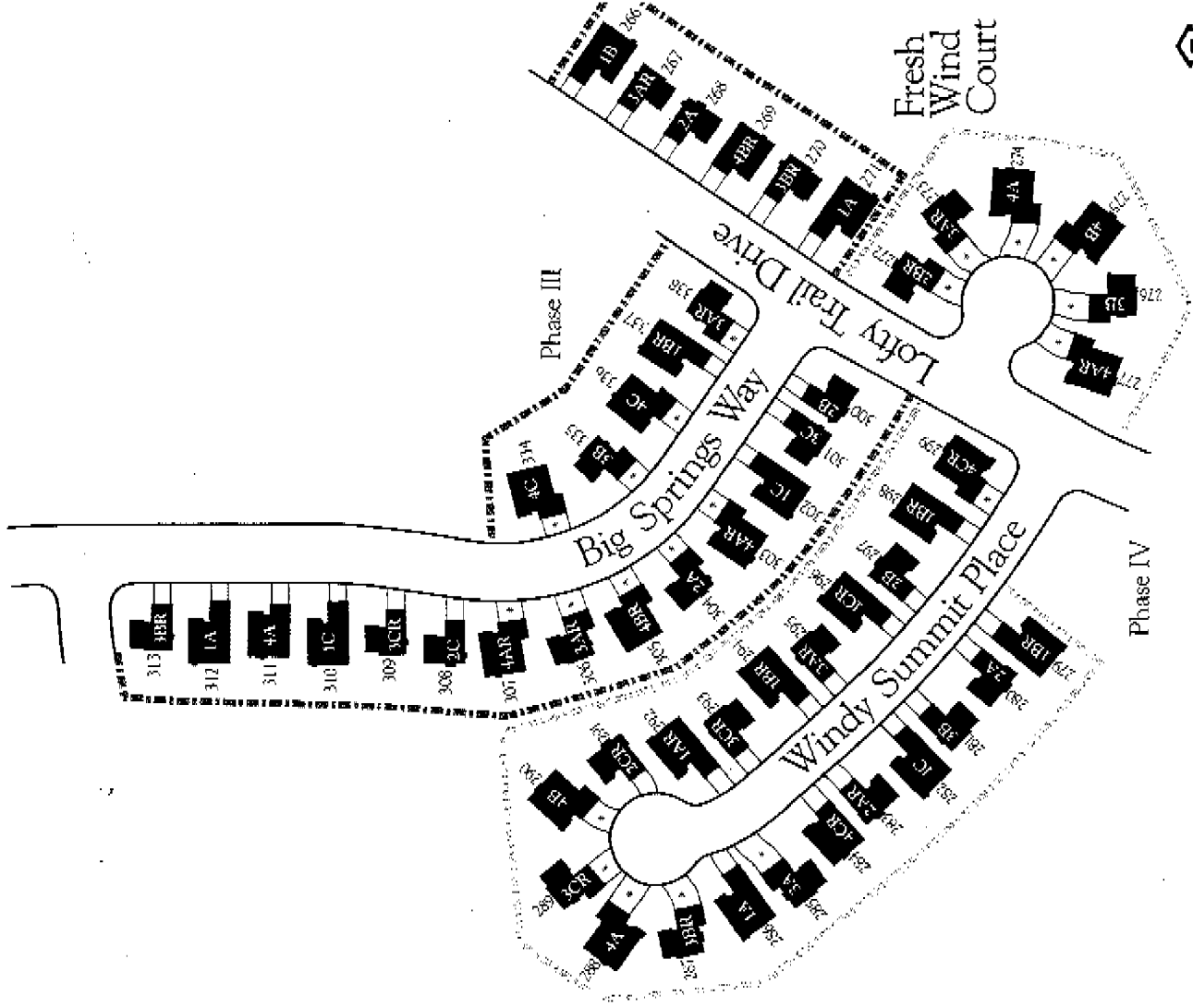
Plan 3  
2000 Square Feet  
4 Bedrooms, 2 1/2 Baths



# The Baccarat

3940 SQ FT  
4 BD. + BONUS RM  
2 1/2 Baths  
Master Bedroom  
is Room





### Phases III & IV

- The Waterford – Plan 1
- The Tiffany – Plan 2
- The Sterling – Plan 3
- The Baccarat – Plan 4

\*3 Car Garage

