

The Hunt Club

at Seabreeze Farms

THE.



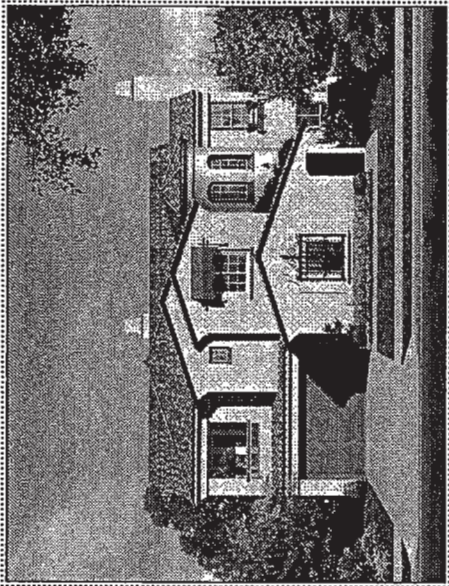
• AT SEABREEZE FARMS •

PRELIMINARY

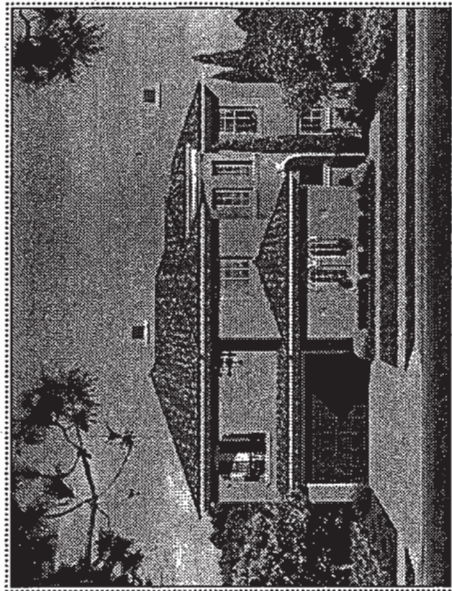
PRESENTED BY

CENTEX HOMES

RESIDENCE 1



1A



1B



1C

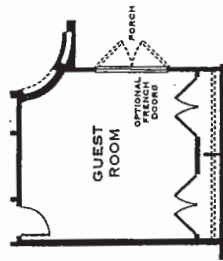
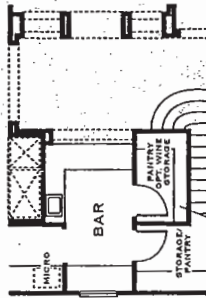
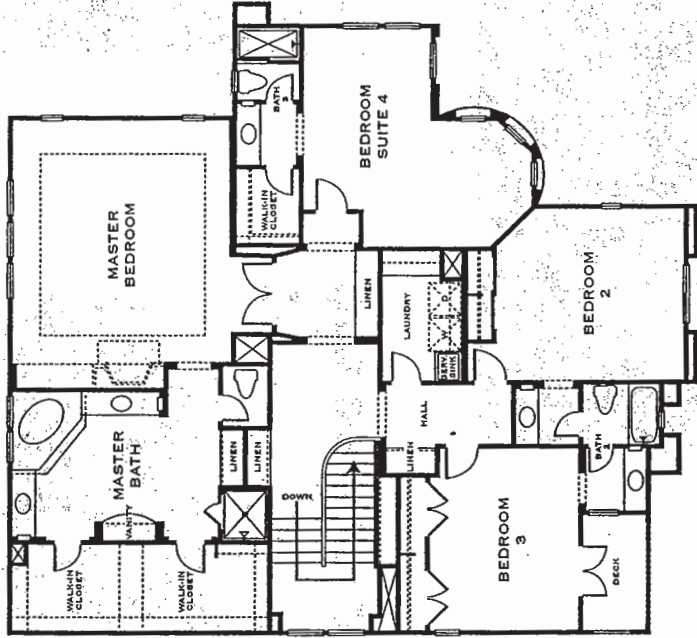
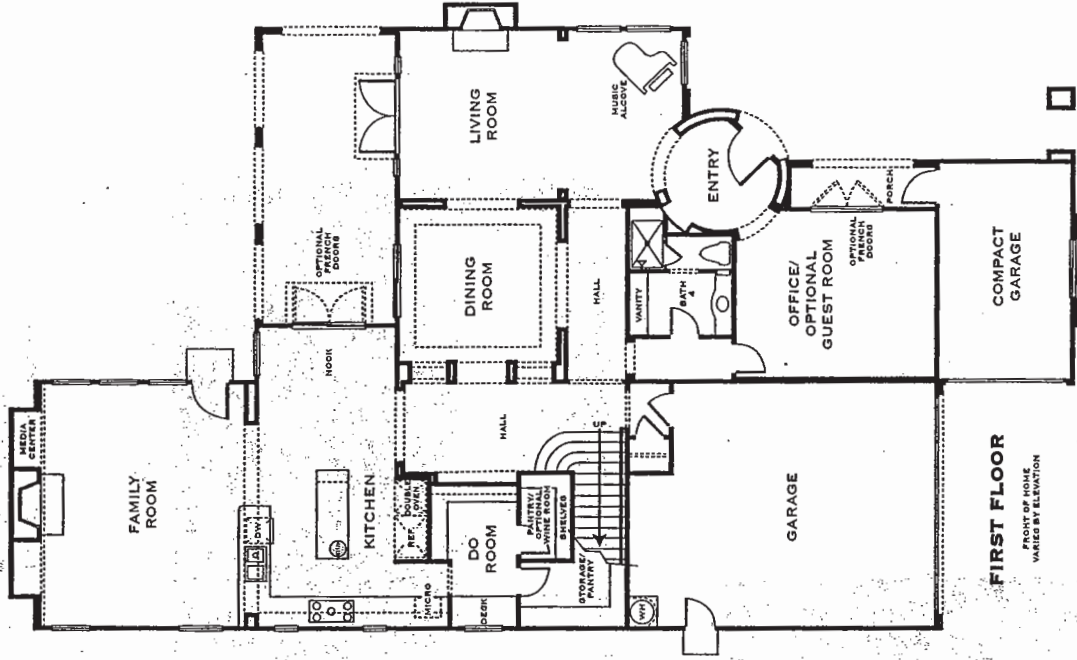
PRELIMINARY

CENTEX HOMES RESERVES THE RIGHT TO CHANGE SALES PRICES AND ADD, DELETE OR MODIFY FLOORPLANS, ELEVATIONS AND SPECIFICATIONS WITHOUT NOTICE OR OBLIGATION. SEE YOUR SALES REPRESENTATIVE FOR DETAILS.



RESIDENCE 1

4,105 SQUARE FEET • 4 BEDROOMS • 4 BATHS

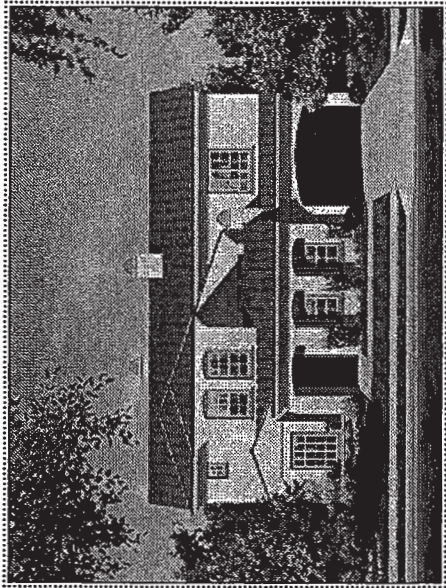


PRELIMINARY

CENTEX HOMES RESERVES THE RIGHT TO CHANGE SALES PRICES AND, ADD, DELETE OR MODIFY FLOORPLANS, ELEVATIONS AND SPECIFICATIONS WITHOUT NOTICE OR OBLIGATION. SEE YOUR SALES REPRESENTATIVE FOR DETAILS.



RESIDENCE 2



2A



2B



2C

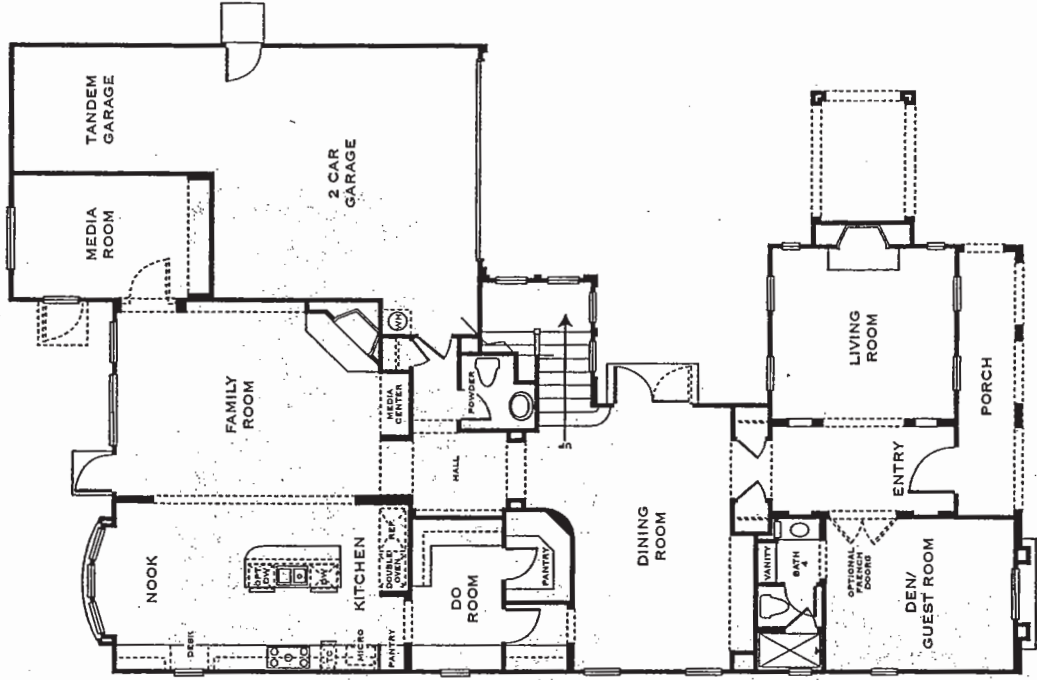
PRELIMINARY

CENTEX HOMES RESERVES THE RIGHT TO CHANGE SALES PRICES AND ADD, DELETE OR MODIFY FLOORPLANS, ELEVATIONS AND SPECIFICATIONS WITHOUT NOTICE OR OBLIGATION. SEE YOUR SALES REPRESENTATIVE FOR DETAILS.



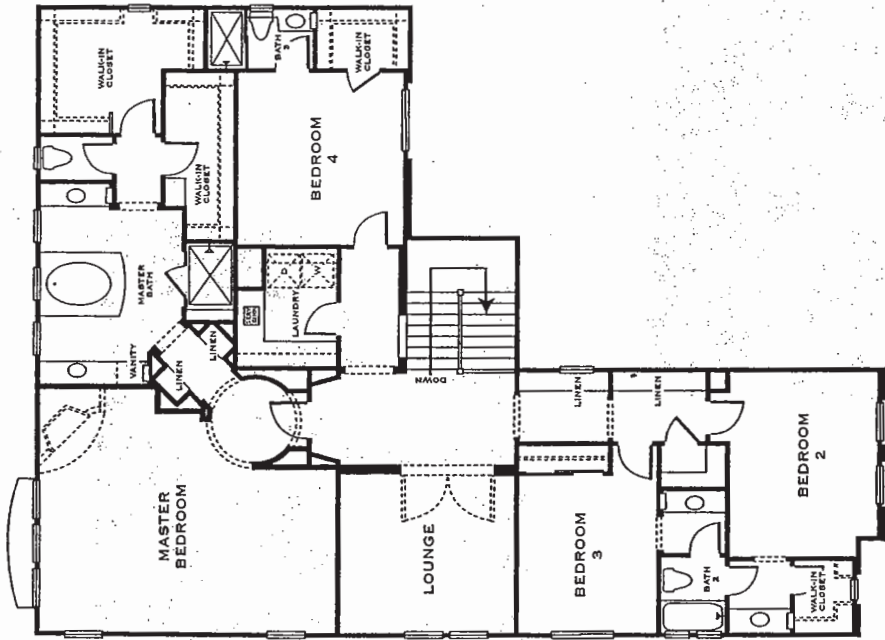
RESIDENCE 2

4,383 SQUARE FEET • 4 BEDROOMS • 4 1/2 BATHS

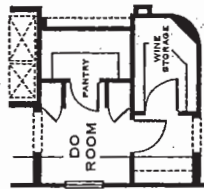


FIRST FLOOR

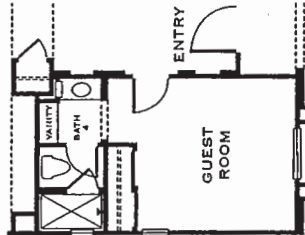
FRONT OF HOME
VALUED BY ELECTRON



SECOND FLOOR



OPTIONAL PANTRY



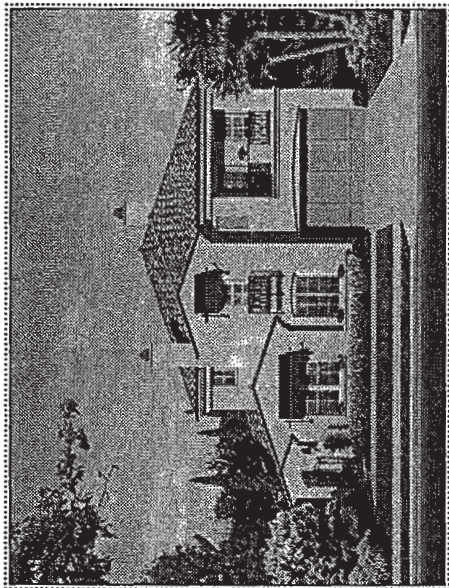
OPTIONAL GUEST ROOM

PRELIMINARY

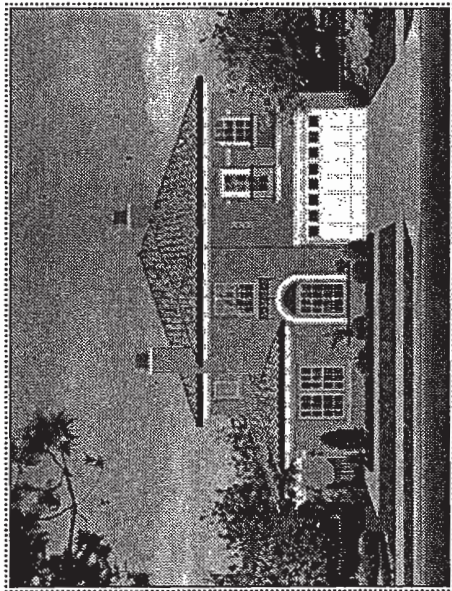
CENTEX HOMES RESERVES THE RIGHT TO CHANGE SALES PRICES AND ADD, DELETE OR MODIFY FLOORPLANS, ELEVATIONS AND SPECIFICATIONS WITHOUT NOTICE OR OBLIGATION. SEE YOUR SALES REPRESENTATIVE FOR DETAILS.



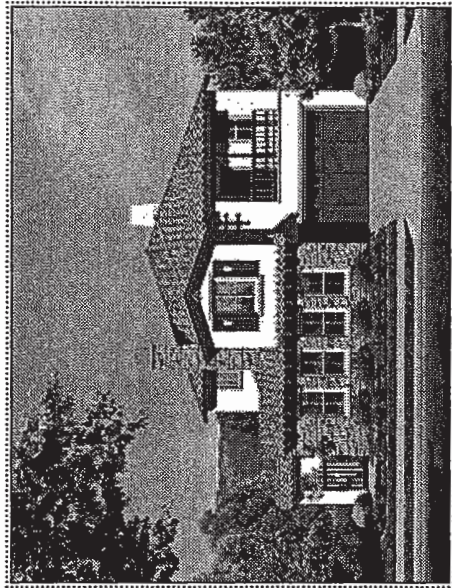
RESIDENCE 3



3A



3B



3C

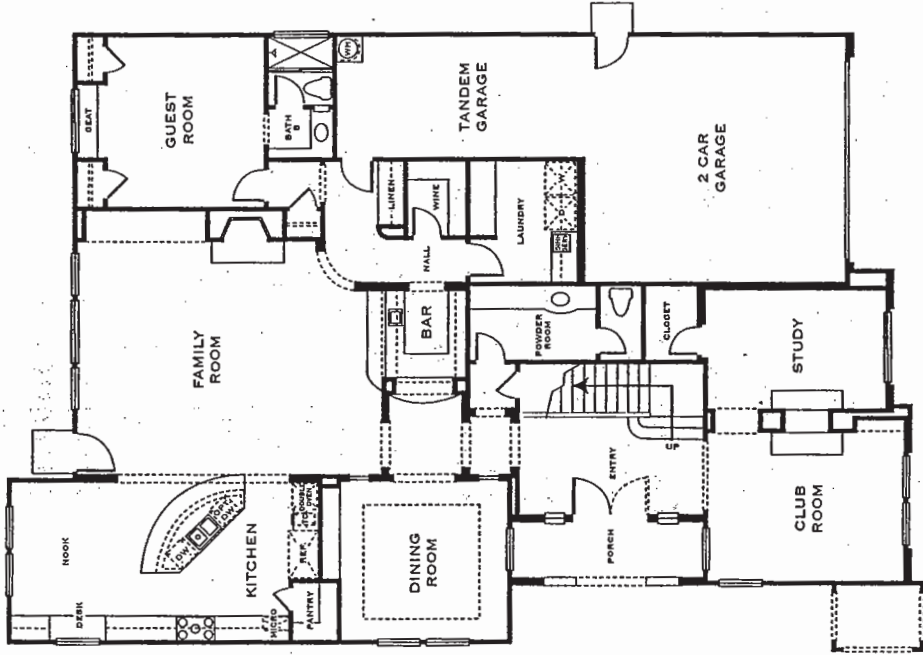
PRELIMINARY

CENTEX HOMES RESERVES THE RIGHT TO CHANGE SALES PRICES AND ADD, DELETE OR MODIFY FLOORPLANS, ELEVATIONS AND SPECIFICATIONS WITHOUT NOTICE OR OBLIGATION. SEE YOUR SALES REPRESENTATIVE FOR DETAILS.



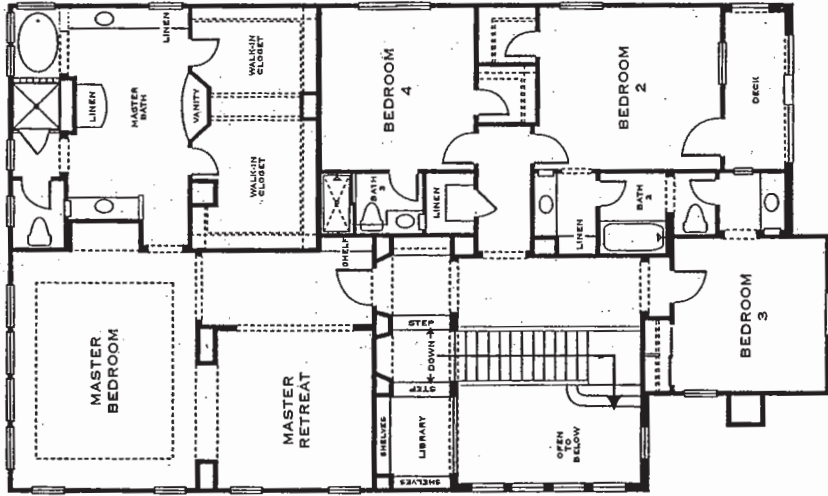
RESIDENCE 3

4,528 SQUARE FEET • 5 BEDROOMS • 4 1/2 BATHS

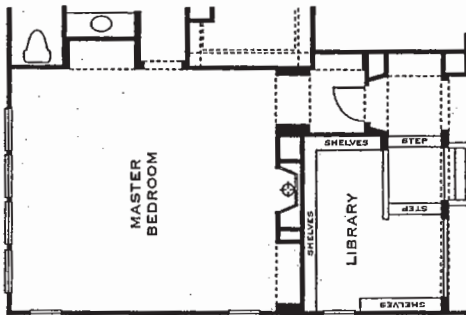


FIRST FLOOR

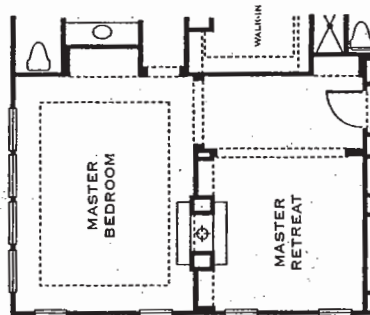
FRONT OF HOME
VARIES BY ELEVATION



SECOND FLOOR



OPTIONAL MASTER BEDROOM



OPTIONAL FIREPLACE

PRELIMINARY
CENTEX HOMES RESERVES THE RIGHT TO CHANGE SALES PRICES AND ADD, DELETE OR MODIFY FLOORPLANS, ELEVATIONS AND SPECIFICATIONS WITHOUT NOTICE OR OBLIGATION. SEE YOUR SALES REPRESENTATIVE FOR DETAILS.



STANDARD FEATURES

INTERIORS

- FLEXIBLE FLOORPLANS
- VOLUME CEILINGS IN SELECT AREAS
- MAPLE HANDRAIL AND NEWEL POSTS
- BULLNOSE CORNERS THROUGHOUT
- DELTA SATIN NICKEL BATH FAUCETS
- WOOD BURNING FIREPLACE(S) WITH MANTEL(S) (WITH THE EXCEPTION OF PLAN 3 CLUB ROOM/STUDY)
- DOUBLE-SIDED GAS FIREPLACE AT CLUB ROOM/STUDY (PLAN 3)
- WHITE DECORA LIGHT SWITCHES
- DESIGNER SELECTED LIGHT FIXTURES
- INTERIOR LAUNDRY AREA WITH SINK AND WHITE CABINETS
- PRE-WIRED FOR TELEPHONE IN ALL BEDROOMS, KITCHEN, DEN, OFFICE, AND STUDY
- PRE-WIRED FOR CABLE IN ALL BEDROOMS, FAMILY ROOM, DEN, OFFICE, AND STUDY
- SMOKE DETECTOR IN ALL BEDROOMS
- MEDIA NICHE (PLANS 2 AND 3)
- PAINTED WINDOW STOOL AND APRON IN SELECT AREAS
- CERAMIC TILE FLOORING AT ENTRY AND KITCHEN
- EUROPEAN STYLE MAPLE CABINETRY WITH CHOICE FROM THREE AVAILABLE FINISHES
- GENEROUS LINEN CABINETS AND STORAGE AREAS
- POLISHED BRASS FINISHED DOOR HARDWARE
- DESIGNER BASEBOARDS AND DOOR CASINGS THROUGHOUT
- STRUCTURED WIRING WITH TELEPHONE DISTRIBUTION AND AMPLIFIED CABLE DISTRIBUTION
- EIGHT ZONE SECURITY SYSTEM

GOURMET KITCHENS

- EUROPEAN STYLE MAPLE CABINETRY WITH CHOICE FROM THREE AVAILABLE FINISHES
- GOURMET ISLAND WITH THE CONVENIENCE OF A VEGETABLE SINK (PLAN 1)
- 8X8 CERAMIC TILE COUNTERS IN YOUR CHOICE OF WHITE OR ALMOND (FULL BACK SPLASH AT COOK TOP)
- KITCHEN AID APPLIANCES IN YOUR CHOICE OF BLACK OR WHITE
 - 5 BURNER, GAS COOK TOP WITH TEMPERED GLASS SURFACE
 - SLIDE-OUT VENTILATION HOOD
 - SELF-CLEANING ELECTRIC DOUBLE OVEN
 - MULTICYCLE DISHWASHER
 - FULL-SIZE BUILT IN MICROWAVE WITH TURN-TABLE
- CASUAL BREAKFAST AREA
- DELTA FAUCET WITH PULL-OUT LOOP HANDLE
- PLUMBED FOR AUTOMATIC ICE MAKER
- SPACIOUS PANTRY
- RECESSED LIGHTING
- SOUND INSULATED GARBAGE DISPOSAL(S)
- UNDER CABINET ACCENT LIGHTING
- KOHLER, HI/LOW, CAST IRON/PORCELAIN SINK

ENERGY SAVING

- DUAL GLAZED VINYL MILGARD WINDOWS THROUGHOUT
- FULLY INSULATED EXTERIOR WALLS AND CEILING AT LIVING AREAS
- GAS-FORCED AIR HEATING WITH SETBACK THERMOSTAT (DUAL ZONES)
- RECIRCULATING HOT WATER SYSTEM WITH TIMER
- 75 GALLON ENERGY EFFICIENT GLASS LINED GAS WATER HEATER
- HEAT SAVING GLASS FIREPLACE DOORS
- WATER SAVING PLUMBING FIXTURES THROUGHOUT

MASTER SUITES

- WALK-IN CLOSETS
- MIRRORRED WARDROBE DOOR(S)
- DOUBLE CHINA BASINS BY KHOLER WITH DELTA FAUCETS
- 6X6 CERAMIC TILE COUNTERS IN YOUR CHOICE OF WHITE OR ALMOND
- FULL CERAMIC TILED SHOWER AND TUB SURROUNDED IN YOUR CHOICE OF WHITE OR ALMOND
- ACRYLIC, 6 FOOT, OVAL ROMAN STYLE TUB
- SEPARATE WALK-IN SHOWER WITH BUILT-IN SEAT
- CLEAR GLASS SHOWER ENCLOSURES
- RECESSED LIGHTING AND DECORATIVE VANITY LIGHTS
- BEVELED, FULL WIDTH VANITY MIRROR(S)

EXTERIORS

- A VARIETY OF DISTINCTIVE ITALIAN, TUSCAN, AND SANTA BARBARA ARCHITECTURAL EXTERIORS
- CONCRETE TILE ROOF
- DESIGNER SELECTED EXTERIOR COLOR SCHEMES
- SECTIONAL ROLL-UP GARAGE DOORS WITH QUIET OPENER
- GAS STUB FOR OUTDOOR BARBECUE
- REAR AND SIDE YARD FENCING
- DECORATIVE EXTERIOR LIGHT FIXTURES
- POST TENSIONED FOUNDATION SYSTEM
- 3 CAR GARAGES FULLY DRYWALLED (TANDEM ON MOST PLANS)
- PEST DEFENSE SYSTEM
- DRAMATIC ENTRY
- CONCRETE DRIVEWAY AND WALKWAY
- RAIN GUTTERS IN APPROPRIATE LOCATIONS

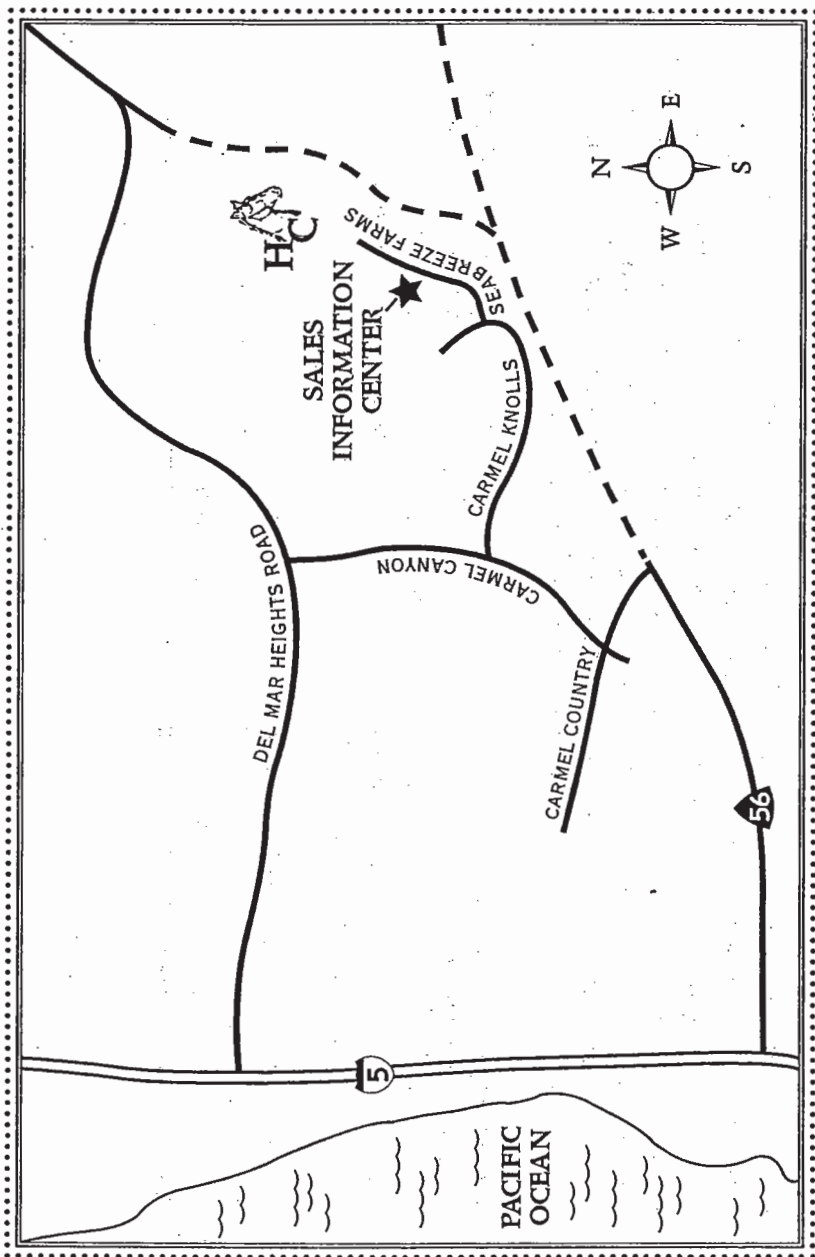
CENTEX HOMES CUSTOM TAILORING OPPORTUNITIES

TO HELP YOU PERSONALIZE YOUR NEW HOME, CENTEX HOMES INVITES YOU TO TALK TO YOUR SALES REPRESENTATIVE ABOUT THE VARIETY OF CHOICES AVAILABLE THROUGH OUR HOME TAILORING CENTER.

PRELIMINARY



LOCATION



12758 SEABREEZE FARMS DRIVE
SAN DIEGO, CA 92130
PHONE (858) 259-4166
FAX (858) 259-4720

PRELIMINARY



THE BUILDER

CENTEX HOMES HAS BEEN NATIONALLY RANKED IN THE TOP TEN HOME BUILDERS FOR OVER THREE DECADES. **CENTEX** IS NATIONALLY KNOWN AND HIGHLY RESPECTED FOR ITS ACHIEVEMENTS AS A FORTUNE 500 COMPANY. OUR REPUTATION FOR *QUALITY, VALUE, AND PRIDE* WAS NOT BUILT OVERNIGHT. IT CAME FROM YEARS OF COMMITMENT TOWARD CONTINUOUS IMPROVEMENT AND EDUCATION AT ALL LEVELS WITHIN **CENTEX HOMES**. IT CAME FROM LISTENING TO YOU, OUR CUSTOMER, UNDERSTANDING YOUR NEEDS AND REQUIREMENTS AND ALWAYS STRIVING TO

"MEET YOUR EXPECTATIONS."

NATIONWIDE, **CENTEX HOMES** HAS BEEN IN THE FOREFRONT OF THE HOME BUILDING INDUSTRY, BUILDING HUNDREDS OF NEW NEIGHBORHOODS OF QUALITY HOMES IN MANY PRICE RANGES, IN COMMUNITIES THAT FEATURE THE BEST OF SERVICES AND OFFER A VARIETY OF LIFESTYLES. INCLUDING NUMEROUS **CENTEX** NEIGHBORHOODS ESTABLISHED IN CALIFORNIA, THE COMPANY HAS OVER 40 HOME BUILDING DIVISIONS THROUGHOUT THE UNITED STATES FROM CALIFORNIA TO FLORIDA AND FROM THE TIP OF TEXAS TO THE LAKES OF MINNESOTA.

CENTEX HOMES, ONE OF THE NATION'S LARGEST HOME BUILDERS, IS A SUBSIDIARY OF **CENTEX CORPORATION**, A NEW YORK STOCK EXCHANGE COMPANY WITH ANNUAL REVENUES OVER THREE BILLION DOLLARS. WE ARE PUTTING THESE TREMENDOUS RESOURCES TO WORK BY PROVIDING OUR CUSTOMERS WITH A QUALITY HOME, BUILT WITH "*CENTEX PRIDE*" AND THE BEST VALUE YOU CAN FIND TODAY.

ABOVE ALL ELSE, **CENTEX** IS COMMITTED TO SATISFYING YOU, OUR CUSTOMER.

OUR DEDICATION TO CUSTOMER SERVICE IS SO PARAMOUNT THAT WE CONSIDER IT A PRIME REASON FOR YOU TO BUY A **CENTEX** HOME.

THE CENTEX COMMITMENT TO CUSTOMER SATISFACTION IS OUR PROMISE TO YOU.

PRELIMINARY

