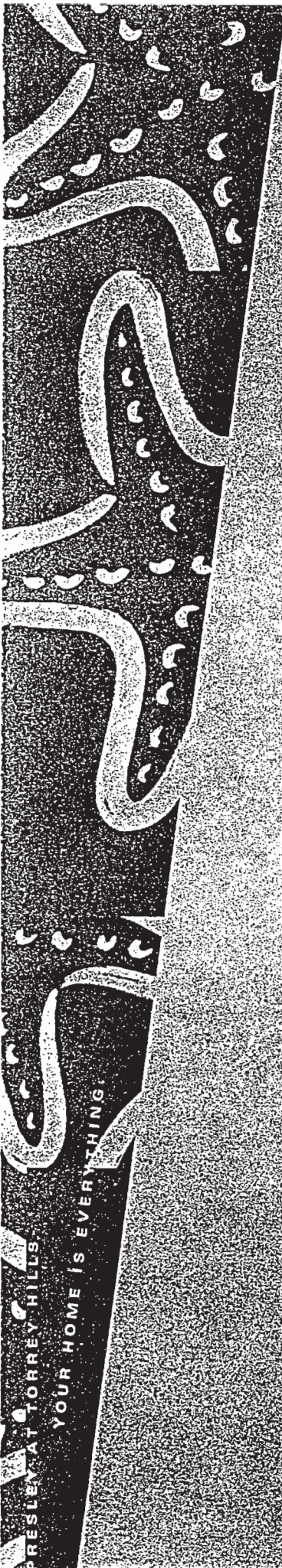


# The Sands



PRESLEY AT TORREY HILLS

YOUR HOME IS EVERYTHING.





These beautiful quality knit Jersey Homies

They are happy to answer any questions about

and will happily help you with your order.

Thank you for your interest in our products.

We look forward to serving you.

Best regards,

John Doe

Customer Service

123 Main Street

City, State, Zip

Phone: (555) 123-4567

Email: info@example.com

www.example.com

© 2023 Example Company

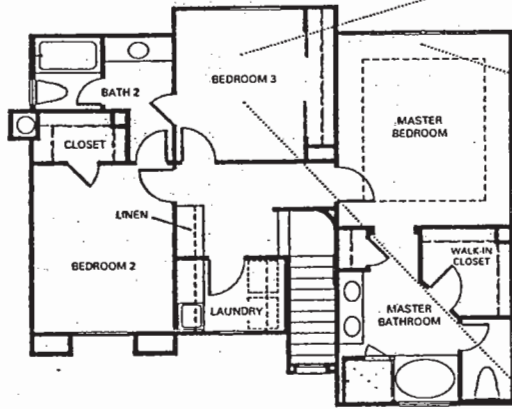
All rights reserved.

Printed in the USA

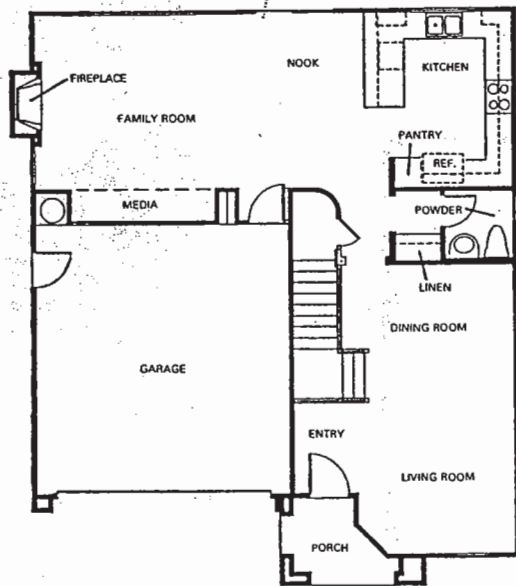
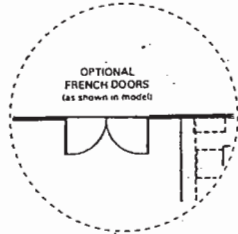
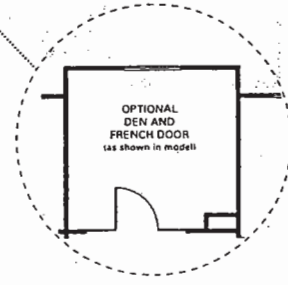
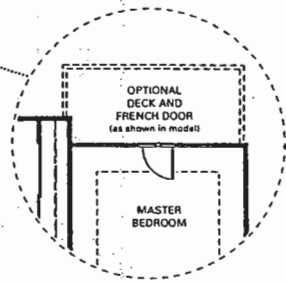
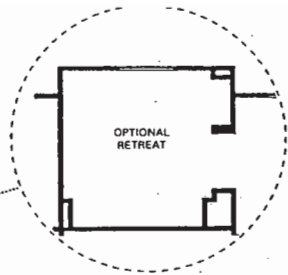
Size: Small

Color: Blue

*Clemente*  
PLAN ONE R



SECOND FLOOR



FIRST FLOOR

1 A

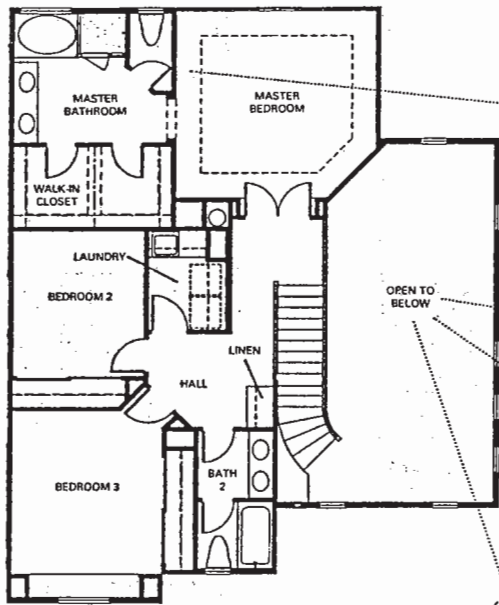
1 B

1 C

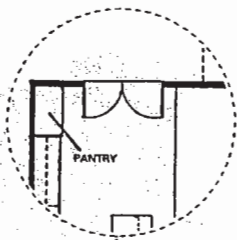
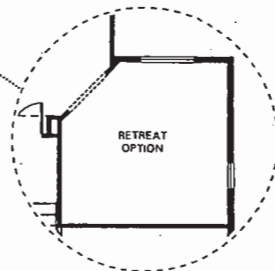
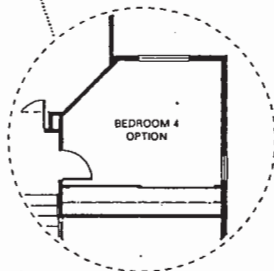
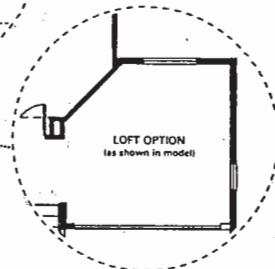
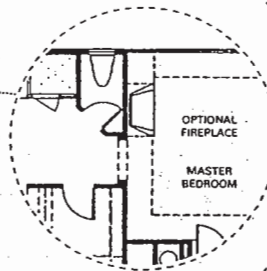
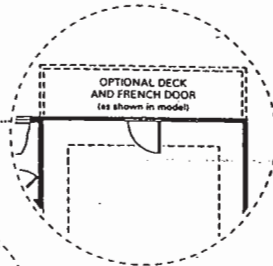
Two story  
1,883 square feet  
3 bedrooms, or 2 bedrooms plus  
optional retreat,  
or 2 bedrooms plus optional den  
2-1/2 baths

Architectural elements such as window placement and porches vary according to exterior elevation of the home. Some of these variances also cause minor variations in square footage. See your sales representative for details.

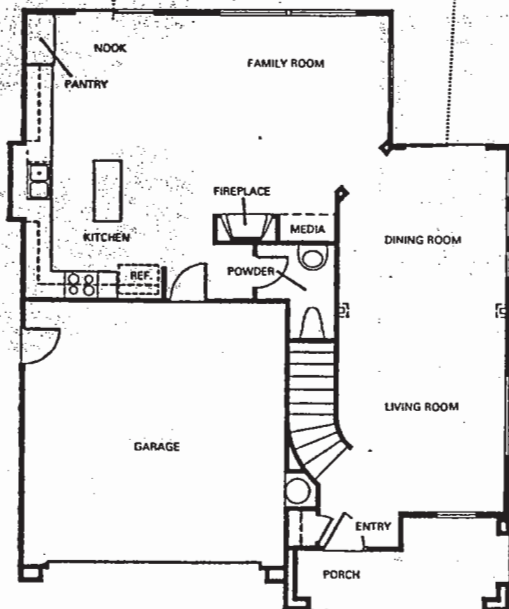
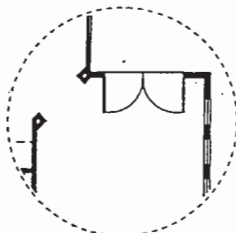
*Doheny*  
PLAN TWO R



SECOND FLOOR



OPTIONAL FRENCH DOORS  
(as shown in model)



FIRST FLOOR

Two story

2,025 square feet:

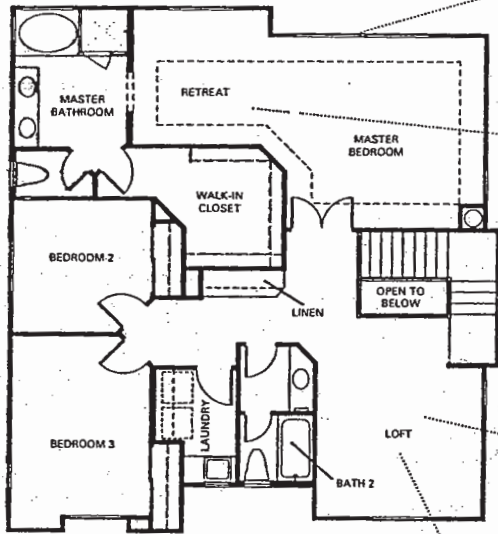
3 bedrooms, 2-1/2 baths

2,182 square feet:

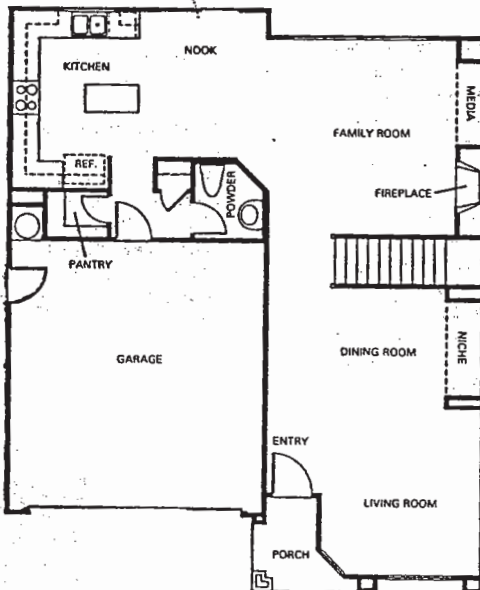
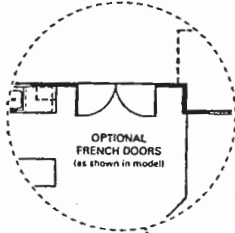
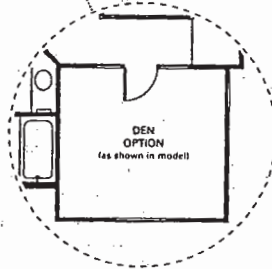
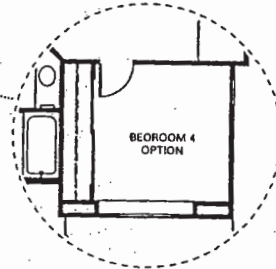
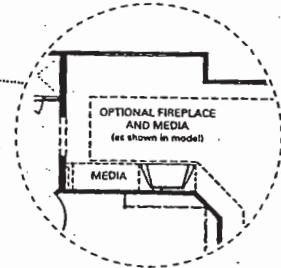
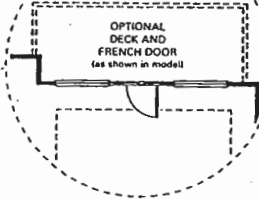
3 bedrooms plus optional loft,

retreat, or 4th bedroom

2-1/2 baths



SECOND FLOOR



FIRST FLOOR



Two story  
 2,229 square feet  
 3 bedrooms plus loft, or  
 3 bedrooms plus optional den, or  
 3 bedrooms plus optional 4th bedroom  
 2-1/2 baths

Architectural elements such as window placement and porches vary according to exterior elevation of the home. Some of these variances also cause minor variations in square footage. See your sales representative for details.

Sure you say, these models look great, but how much will all the extras cost me? Well, chances are a lot of those extras aren't. They're included, as a quick look at our Standard Features list shows.

**Inviting Interiors**

- Rich Oak Capped Handrails
- Rounded Drywall Corners
- Formal Dining Areas
- Interior Laundry Areas with Built-in Upper Cabinets
- Gas Fireplace with Tile Surround in Master Bedrooms
- Wood Burning Fireplaces in Family Rooms
- Built-in Media Niche
- Pre-Wired for Cable TV and Telephone including all Bedrooms
- Insulated Raised Panel Steel Entry Doors
- Spacious Linen Closets
- Plush Carpeting
- Tile Entries
- Decorator Selected Vinyl Flooring
- Gas Forced-Air Heating
- Raised Panel Interior Doors
- Mirrored Wardrobe Doors in all Bedrooms
- Laundry Tubs

**Gourmet Kitchens**

- Ceramic Tile Counter Tops
- Under Cabinet Lighting
- Oak Cabinets - Choice of Colors (Natural or Whitewash)
- Dual Compartment Sinks
- Disposal
- Maytag Under-Counter Gas Oven with Drop-in Cooktop
- Maytag Microwave
- Maytag Multi-Cycle Dishwasher
- Refrigerator Area Plumbed for Ice Maker
- Price Pfister Chrome and White Pull-out Faucet

**Luxurious Baths**

- Ceramic Tile Counter Tops in all Baths
- His and Hers Dual Lavs in Master Bath and Plan 2 Secondary Bath
- Price Pfister Designer Faucets
- Separate Tub and Shower in Master Bath
- Porcelain Towel Bars in Master Bath

**Water and Energy Savers**

- Thermostats with Night Setbacks
- Ultra Low Flow Toilets
- Low-Flow Showerheads
- Dual-Glazed Windows
- Temperature Safe Faucet Controls in Secondary Baths

**Exterior Detailing**

- Color Variety in Street Scape
- Multi-Colored Concrete Tile Roofs
- Architectural Detailing
- Front Yard Landscaping with Automatic Irrigation System
- Full Yard Fencing
- Stub Out for Gas Bar-B-Que
- Covered Front Entries
- Covered Front Porches some Elevations
- Steel, Raised Panel Roll-Up Garage Doors
- Garage Door Openers
- Completely Drywalled Garages

*Presley Possibilities (Options to Consider)*

Listen, we know you want your home to boast its own distinct flavor. You'll see we designed the homes of The Sands with that in mind. Still, you may be among those who want to explore the options, what we call Possibilities. If so, consider these tasteful choices.

- Natural Maple Cabinetry in Three Finishes (Handrail Cap to Match)
- Euro Design White Cabinets (Handrail Cap to Match)
- Leaded Glass Upper Cabinet Door Panels
- Colonist Wardrobe Doors
- Corinthian Counter Tops in Kitchens or Baths
- Designer Selected Granite for Counter Tops
- Ceramic Tile in Designer Colors & Patterns in Kitchens and Baths
- Gas Fireplace with Tile Surround in Master Bedrooms (Plans 2 & 3)
- Deck with French Door off Master Bedrooms
- Upgraded Maytag Microwave
- Upgraded Maytag Cook Top
- Upgraded Maytag Dishwasher
- Built-in Sound System
- Air Conditioning
- Intercom System
- Security System
- Video Security System
- Central Vac System
- Tub Enclosures
- Additional Electrical, Phone, Cable TV Outlets
- Category V Wiring
- Decorative Windows in Garage Door
- Leaded Glass Windows
- Bedroom 3 as Optional Den or Retreat (Plan 1)
- Optional Loft, Retreat or Bedroom 4 (Plan 2)
- Optional Den or Bedroom 4 (Plan 3)



*Clemente*  
PLAN ONE

1,883 sq. ft.  
Two story, 3 bedrooms,  
or 2 bedrooms plus optional retreat,  
or 2 bedrooms plus optional den  
2-1/2 baths

From \$ 348,900

To \$ 363,900

*Doherty*  
PLAN TWO

2,025 sq. ft.  
Two story, 3 bedrooms, 2-1/2 baths  
  
2,182 sq. ft.  
3 bedrooms plus optional loft,  
retreat, or 4th bedroom  
2-1/2 baths

From \$ 376,900

To \$ 390,900

*Newport*  
PLAN THREE

2,229 sq. ft.  
Two story, 3 bedrooms plus loft,  
or 3 bedrooms plus optional den,  
or 3 bedrooms plus optional 4th bedroom  
2-1/2 baths

From \$ 377,900

To \$ 399,900

Prices effective as of: 8/1

In our continuing policy of research and improvement, Presley Homes reserves the right to change product design specifications, materials, prices and terms without prior notice.

