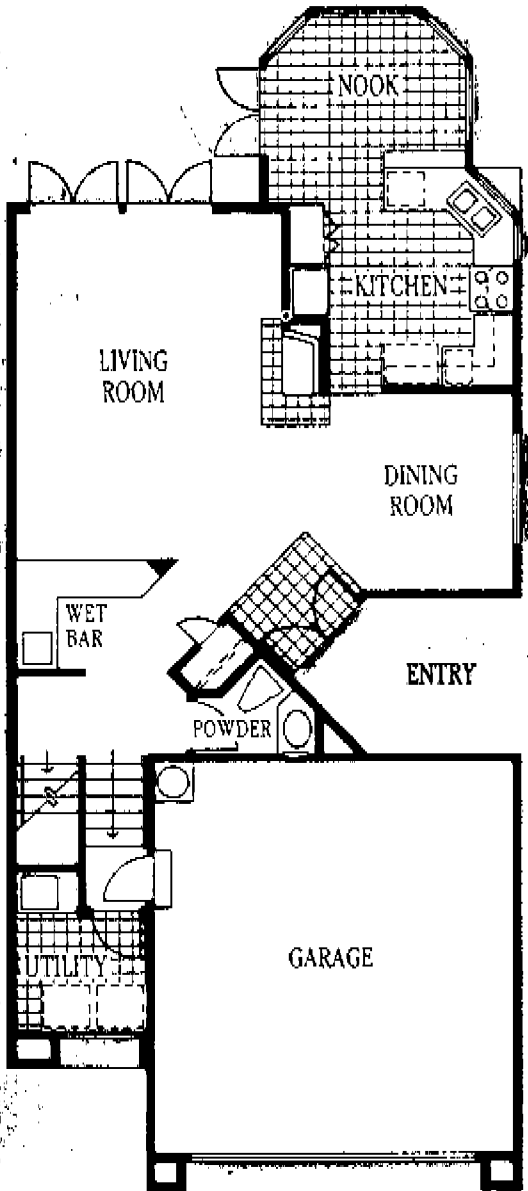


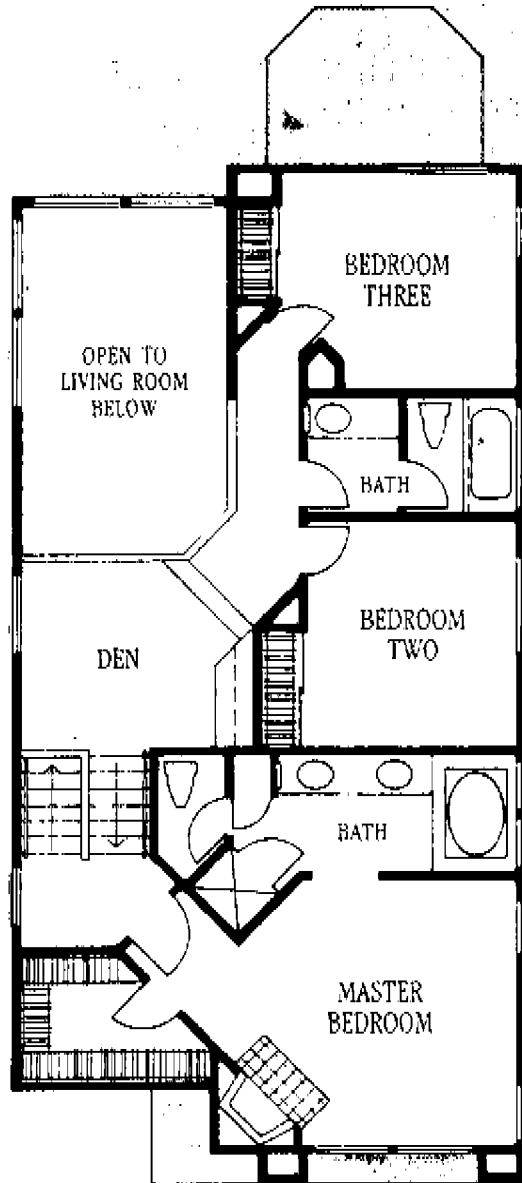


# Madeira

PLAN 1 2022 SQ.FT.



LOWER LEVEL



UPPER LEVEL

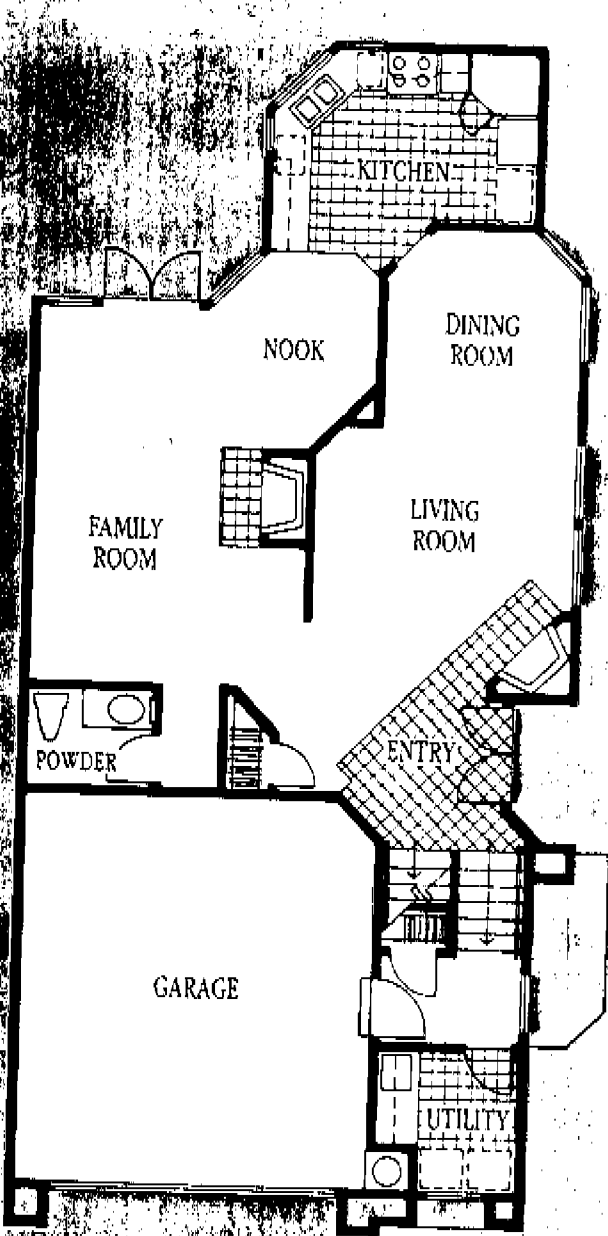


# VENTANA

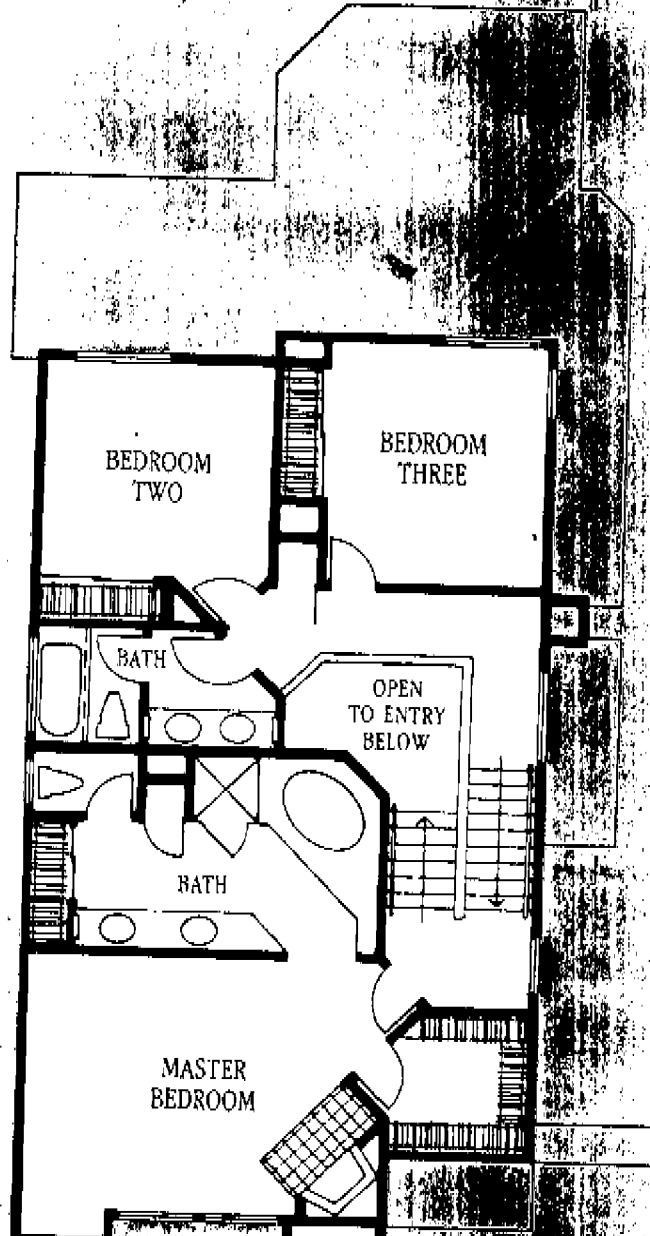


# San Vicente

PLAN 2 2236 SQ.FT.



LOWER LEVEL



UPPER LEVEL

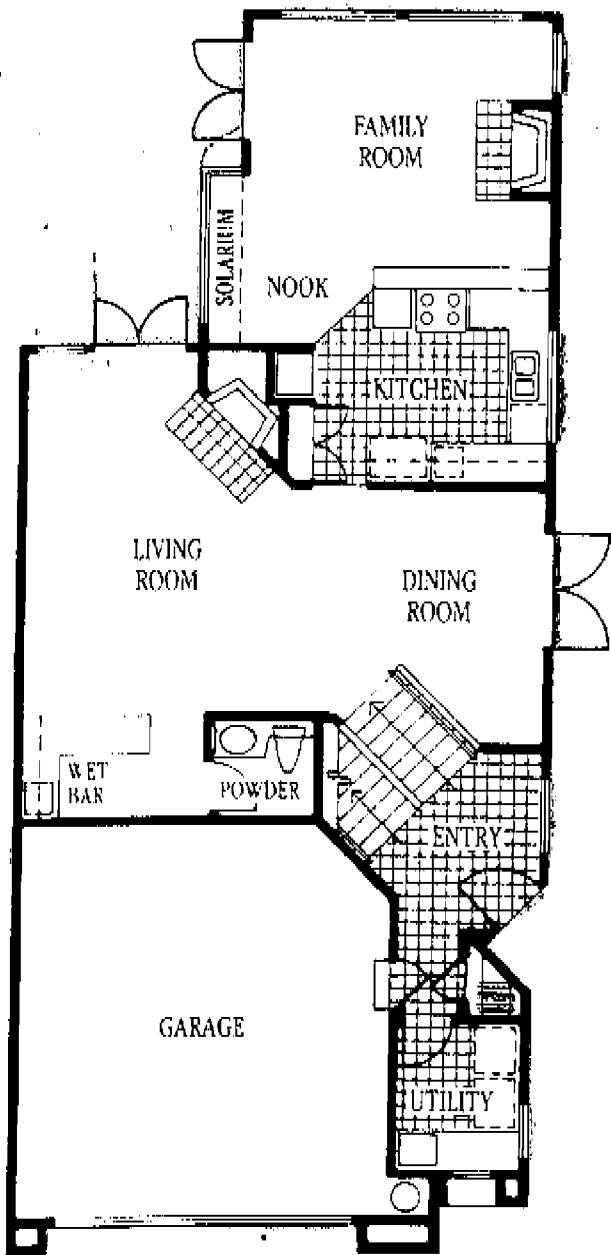


# VENTANA

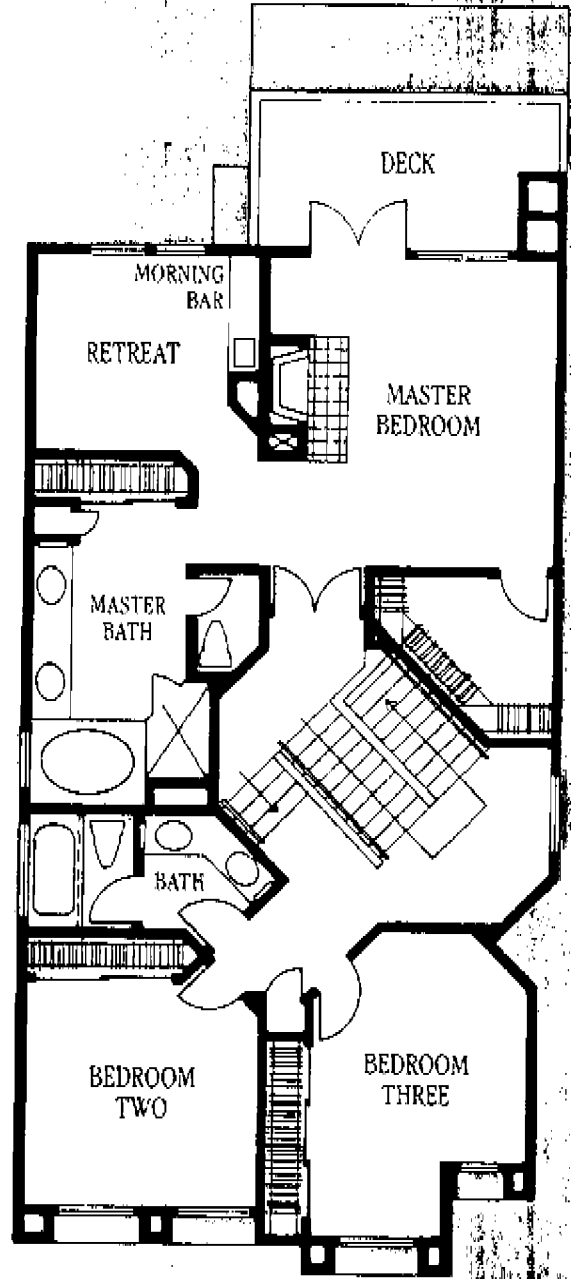


**Coronado**

PLAN 3 2358 SQ.FT.



LOWER LEVEL



UPPER LEVEL

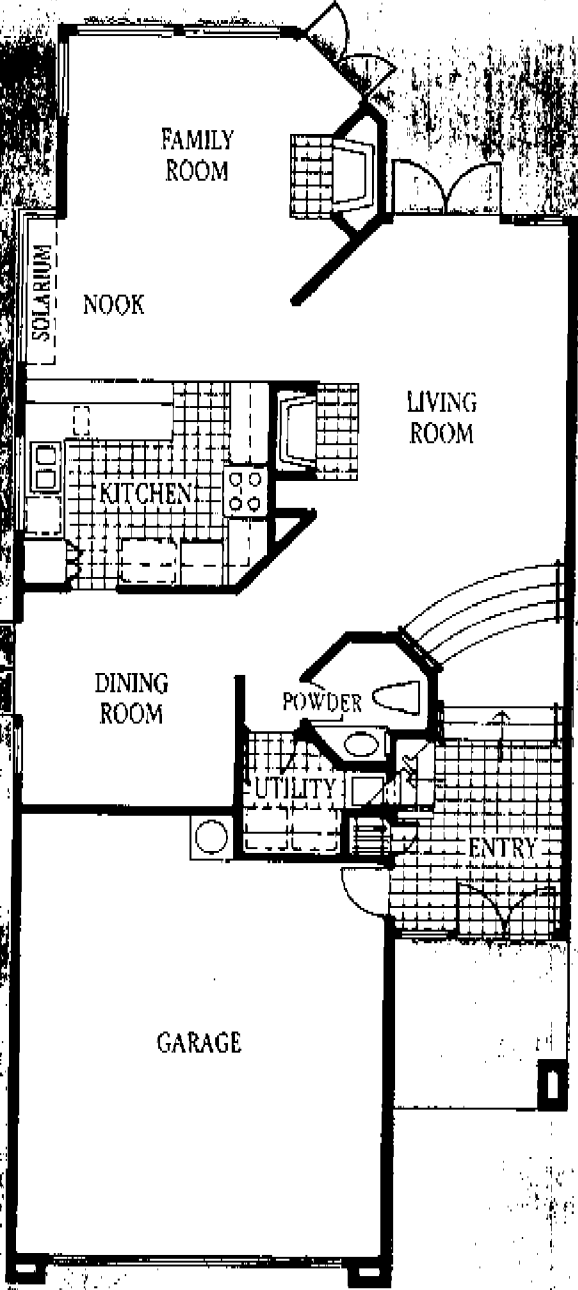


**VENTANA**

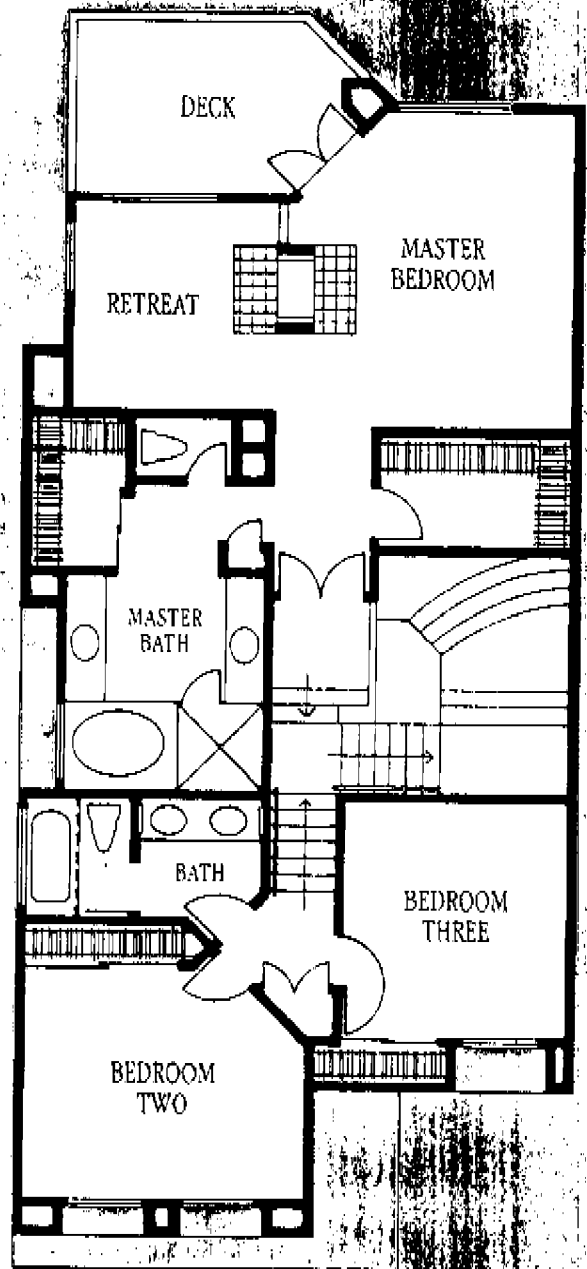


**Montalegre**

PLAN 4 2422 SQ.FT.



LOWER LEVEL



UPPER LEVEL



**VENTANA**

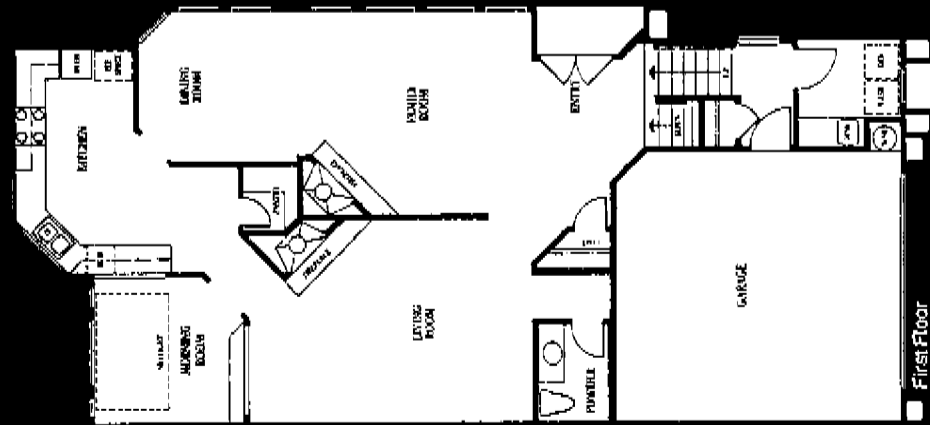


5782

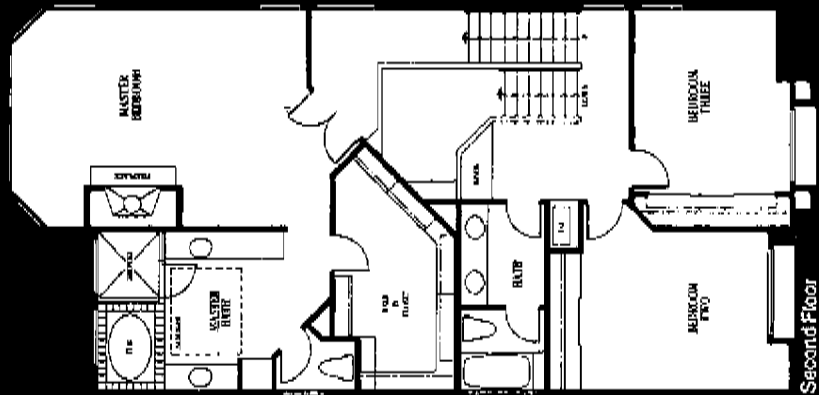
### The Mallorca

Begin every La Jolla morning with coffee outdoors, or at least the effect. The beautiful morning room overlooking the patio is generously glassed behind French doors while the sun enters through a skylighted ceiling. This most spacious Ventana plan includes a large, separate family room with its contemporary fireplace. The Master Suite includes a lovely sitting area, a beautiful walk-in closet and a bath area unmatched in size and elegance.

### Plan 5



First Floor



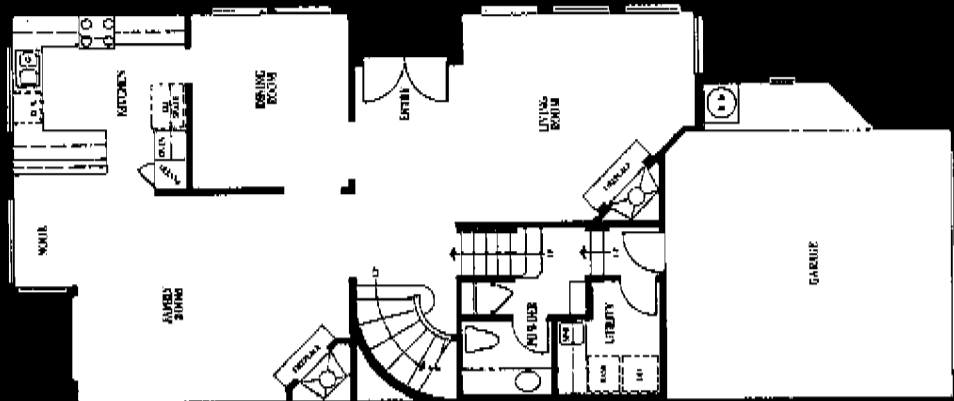
Second Floor

2,609 sq. ft.

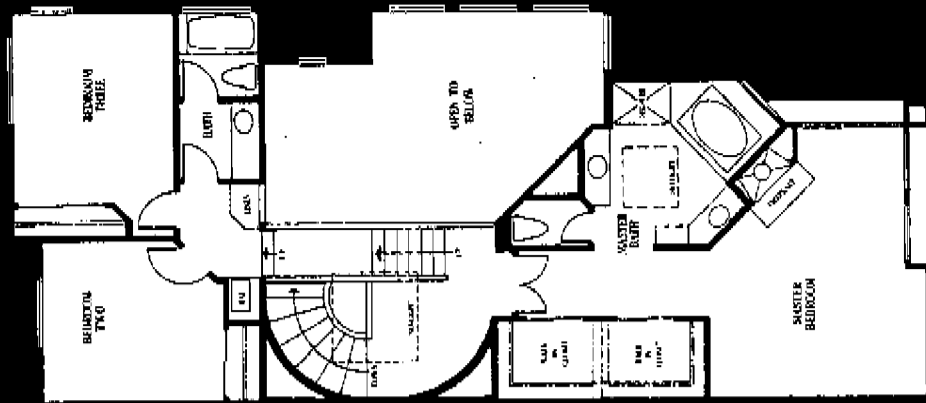
### The Ibiza

The impression one receives here begins dramatically via a soaring vaulted entry and living room that rises majestically nearly 20 feet high. The drama continues as you view the spiral staircase rising to the Master Bedroom Suite just a half story above the main living areas. The dining room is formal and the family room and adjoining nook make a quiet sanctuary for cozy living. The unique architectural bridge to the secondary bedrooms completes the drama of this spectacular plan.

### Plan 6



First Floor



2,430 sq. ft.