



[Elevation A]



[Elevation B]



[Elevation C]

Vermont



West Vermont Ave --Escondido

The one story home is designed to please. Whether you are entertaining or having a cozy family moment. This home welcome's you with open arms.

10/10/07 [unclear]

Vermont



• OUTSTANDING FEATURES •

Distinctly Appointed Interiors

- Expansive nine-foot ceilings throughout
- Fireplace with tile surround and gas outlet
- Hand-set ceramic tile in entryway
- Tile flooring in kitchen and bathrooms
- Plush wall-to-wall carpeting in designer colors
- Pre-wired for telephone and cable television
- Convenient and generous linen cabinets
- Custom rounded wall corners
- Raised-panel doors with polished brass hardware
- Formal dining area with designer selected light fixture
- Wired for ceiling fans in all bedrooms
- Wired for Security and CAT5 Internet Networking

Attractively Detailed Exteriors

- Choice of three architecturally diverse exteriors
- Private front entry porch
- Long-lasting, maintenance, fireproof tile roof
- Roomy three car, finished and painted, garage
- Raised-panel, sectional roll-up garage door
- Rear and side-yard privacy fencing
- Concrete driveway and entry walkway
- Lot sizes are huge from 12,000 sqft and up

Safety and Energy Saving Features

- Life-saving smoke detectors throughout
- Energy-efficient, dual-glazed windows
- Water-saving 1.6 gallon toilets
- Efficient 40 gallon gas water heater
- Pilotless natural gas forced air heater
- Insulated, raised-panel entry door with security deadbolt lock
- Copper plumbing
- Glass fireplace doors
- Insulated house exterior walls and ceilings
- Natural gas outlet for clothes dryer
- Air conditioning included

Gourmet Kitchens

- Deluxe appliances in white-on-white
- Energy-efficient, multi-cycle dishwasher
- Built in microwave
- Single built-in oven
- Sealed burner gas cook top
- Built in pantry cabinet
- Modern recessed lighting fixtures
- Under cabinet countertop lighting
- Hand-set ceramic tile countertop
- Custom crafted oak cabinets
- Single-handle, decorator faucet with pull-out spray
- Dual sink with food waste disposal
- Pre-plumbed for refrigerator ice-maker
- Gourmet center Island

Dramatic Master Suites

- Spacious walk-in closet
- Separate dressing area with his and her sinks
- Impressive cultured marble countertop
- Oversized tile shower with seat
- Custom crafted oak cabinetry
- Separate water closet area for privacy

Custom Design Options

* All options have construction cut-off dates. Please consult with our sales representative for further information regarding the availability and pricing of options and upgrades.

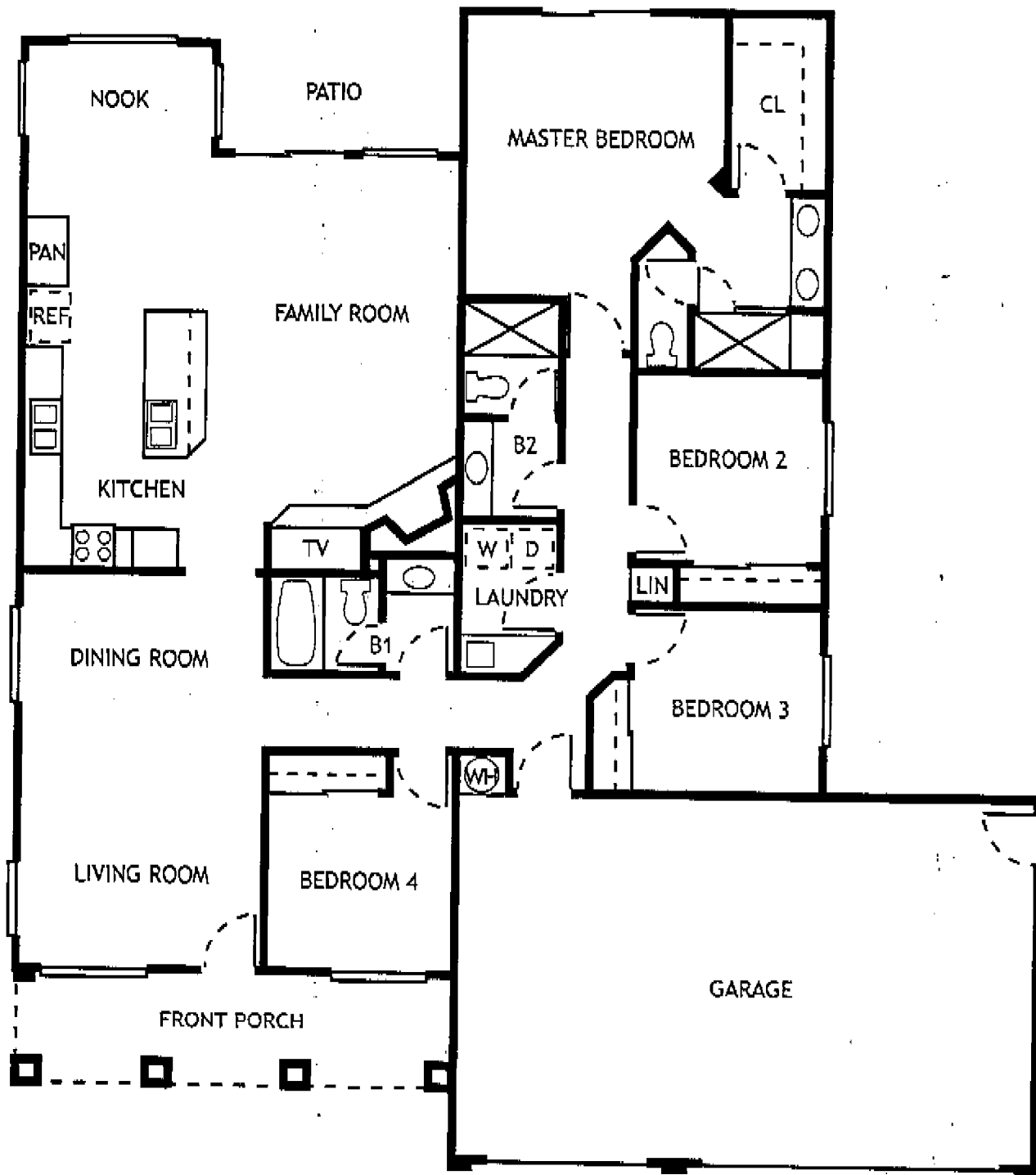
Sales Information *24 hours/ 7 days

- Main phone line (760) 310-9052

Vermont

4 bedrooms ~ 3 bathrooms

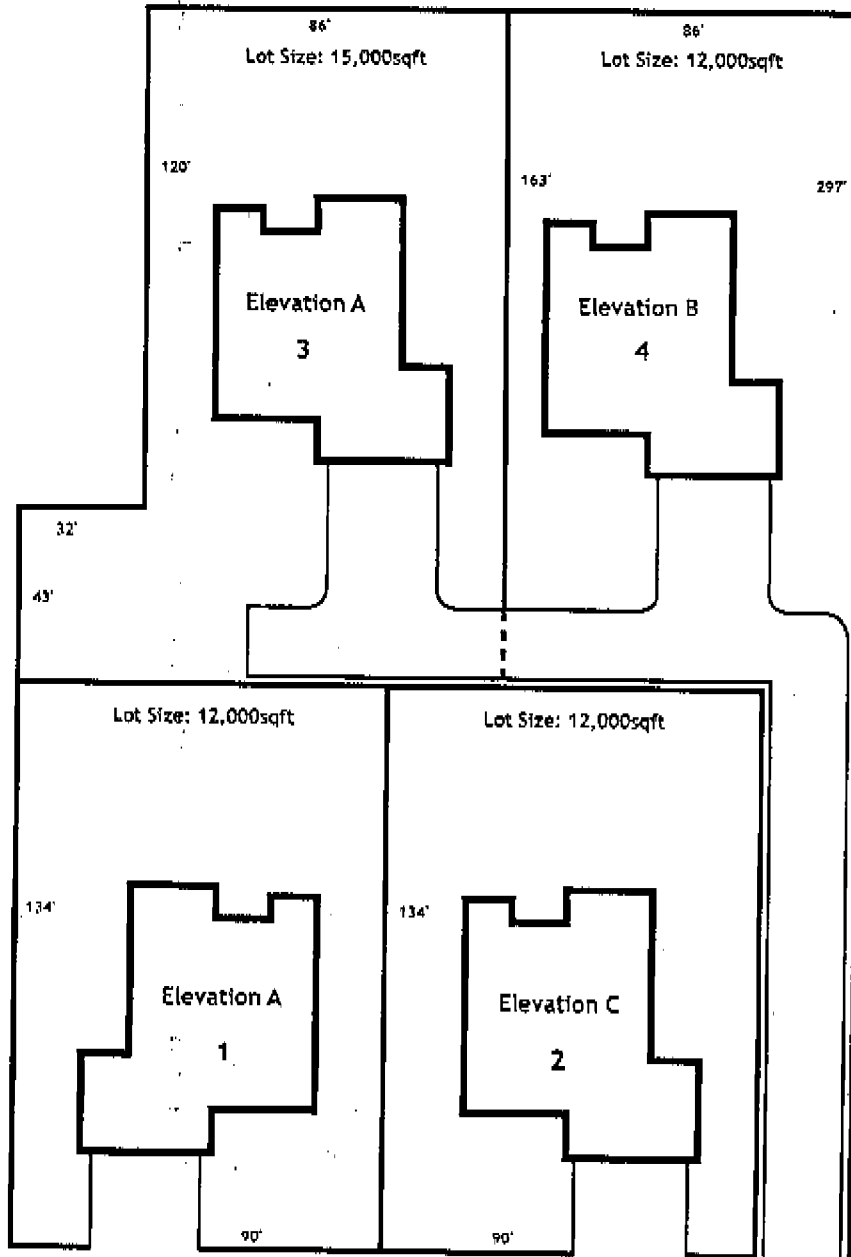
2,032 sqft



Vermont



• Completion Date Winter 2003 •



West Vermont Avenue