

Waterfield/Laurels

PLAN 1 1,014 sq. ft.
Single level • Two bedrooms
Two baths • Family room
From \$ 102,900

PLAN 2 1,243 sq. ft.
Two-story • Two bedrooms
Two baths • Family room loft
From \$ 112,900

PLAN 3 1,461 sq. ft.
Two-story • Three bedrooms
2½ baths • Family room
From \$ 121,900

PLAN 4 1,602 sq. ft.
Two-story • Three bedrooms
2½ baths • Family room
From \$ 127,900

*Prices and terms subject to change without prior notice.
Subsequent sales may result in unavailability of some or all price levels.

SALES OFFICE 14018 PEBBLEBROOK LANE, SAN DIEGO, CA 92128 619/486-2760



Carmel Mountain Ranch

Waterfield/Laurels

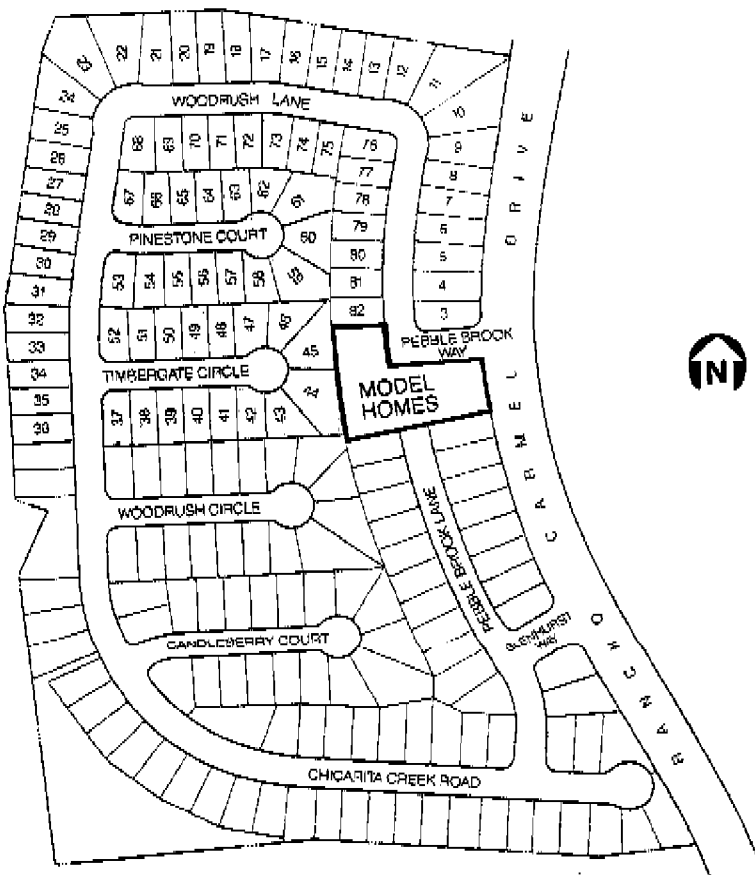
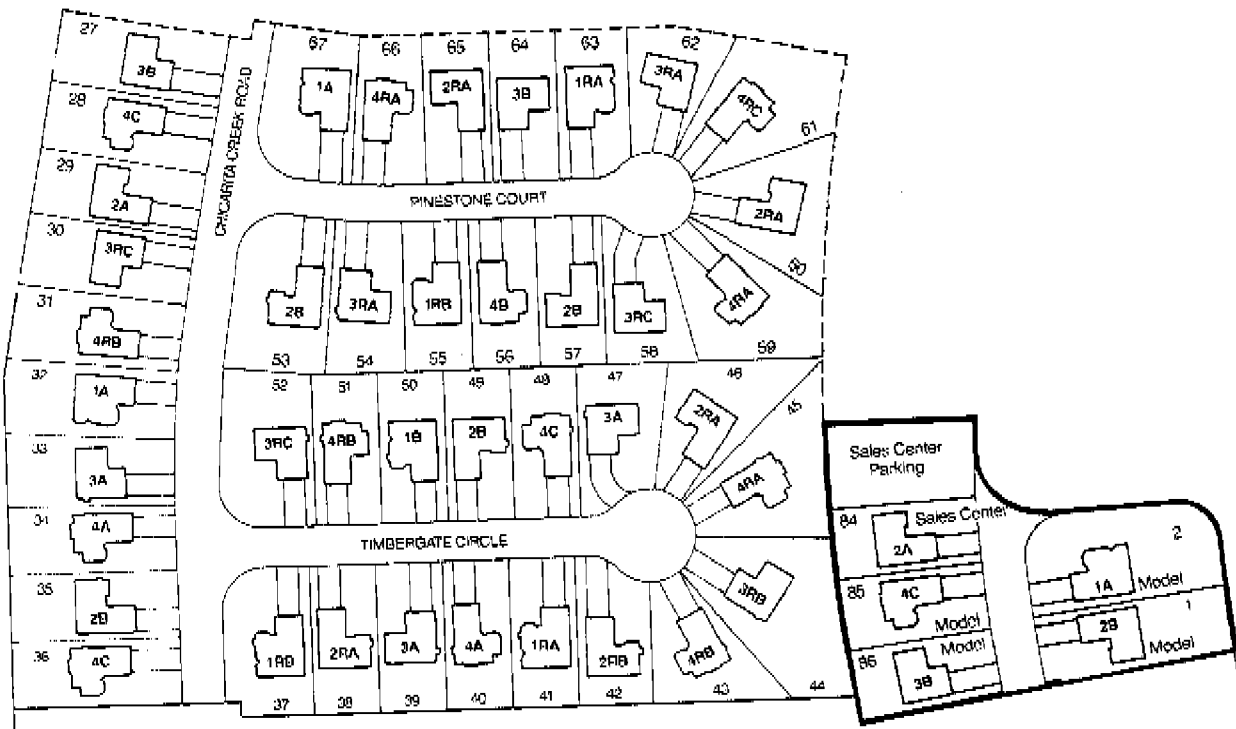
Living & Family Area	Ceramic tile entry Wall-to-wall carpet	Wood-burning fireplace Vaulted ceilings
Kitchen	Ceramic tile counters Microwave oven Continuous-clean gas range Double sink	Oak cabinets Waste disposal Dishwasher Sheet vinyl flooring
Master Suite	Vaulted ceilings in most plans Windowed, compartmentalized bath Full-width bath mirrors Cultured marble pullman counters Sliding glass shower enclosure Ceramic tile surrounding tub	
Plus	Concrete tile roof Underground utilities Concrete driveway Front yard lawn w/sprinklers Gas outlet for outdoor barbecue	Rear property-line fencing Two-car garage Smoke detector Cable t.v. lead lines
Each Waterfield/Laurels home includes these energy-saving features:	R-30 ceiling insulation R-11 exterior wall insulation Automatic night set-back thermostat Gas range with pilotless ignition Dishwasher with power-saving dry cycle Gas outlet for your clothes dryer	

In our continuing policy of research and improvement, Fredricks Development Corporation reserves the right to change product design specifications, materials, prices and terms without prior notice.



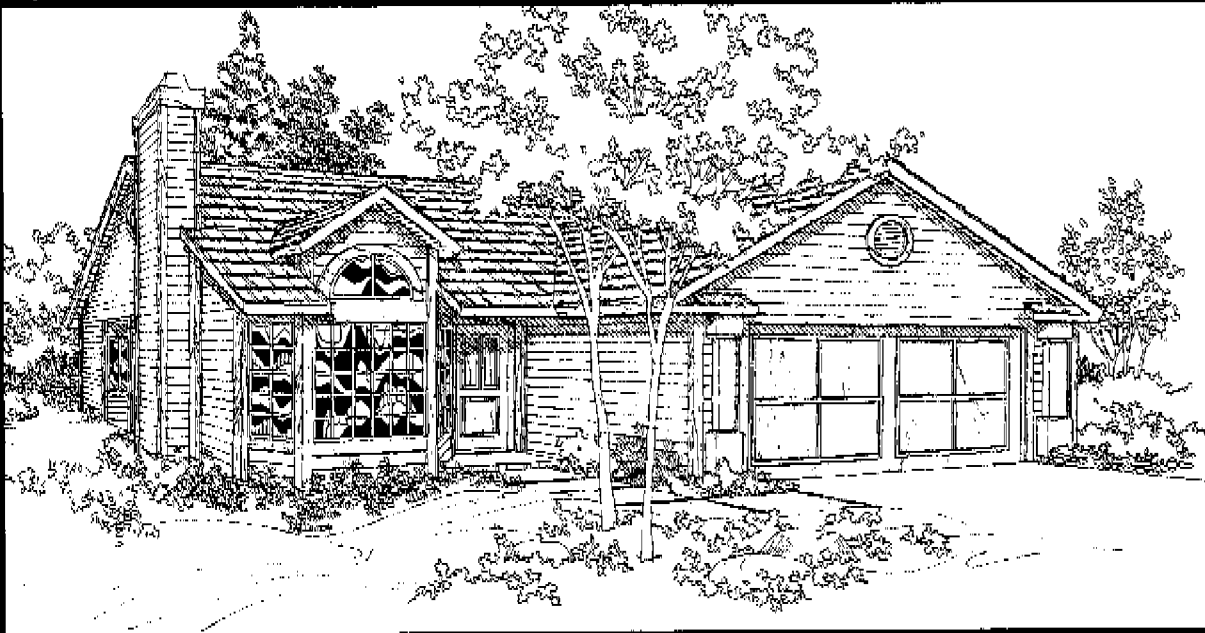
Carmel Mountain Ranch

Waterfield/Laurels



Waterfield/Laurels

Style A

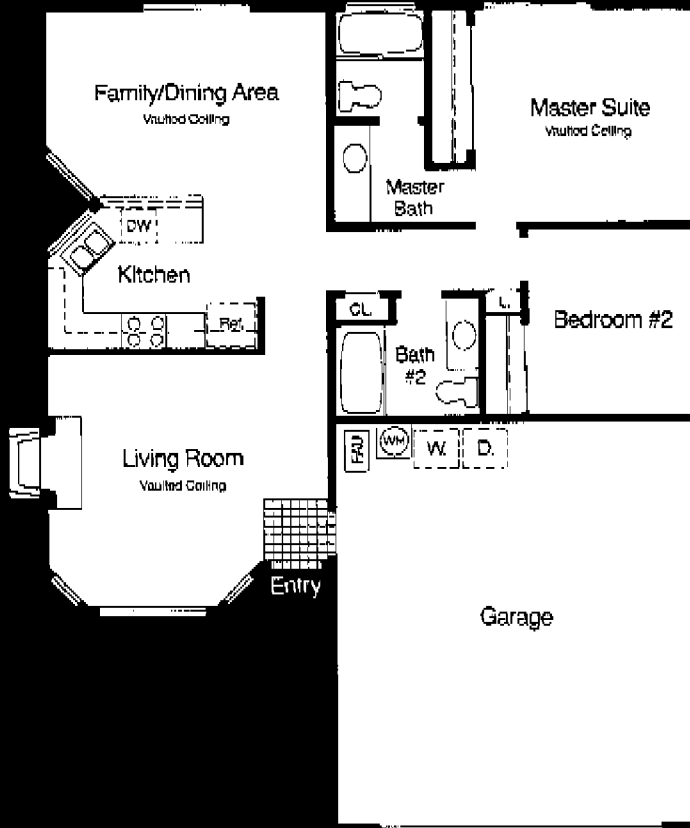


Style B



Our first plan has big appeal for active professionals or single-parent families. The style is clean and contemporary. Two bedrooms and two baths plus a dining room/family room add up to a lot of space with a wide-open feel.

1,014 sq. ft.



Window or glass door design with standard style PLAN 1

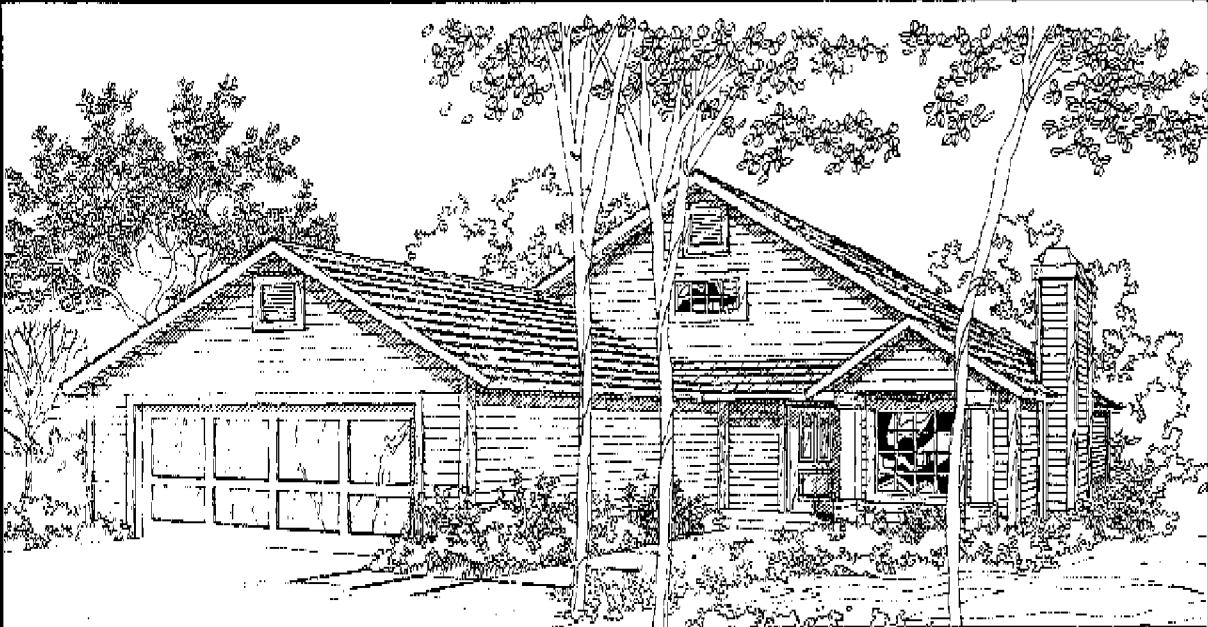
In our continuing policy of research and improvement, Fredricks Development Corporation reserves the right to change product design specifications, materials, prices and terms without prior notice.



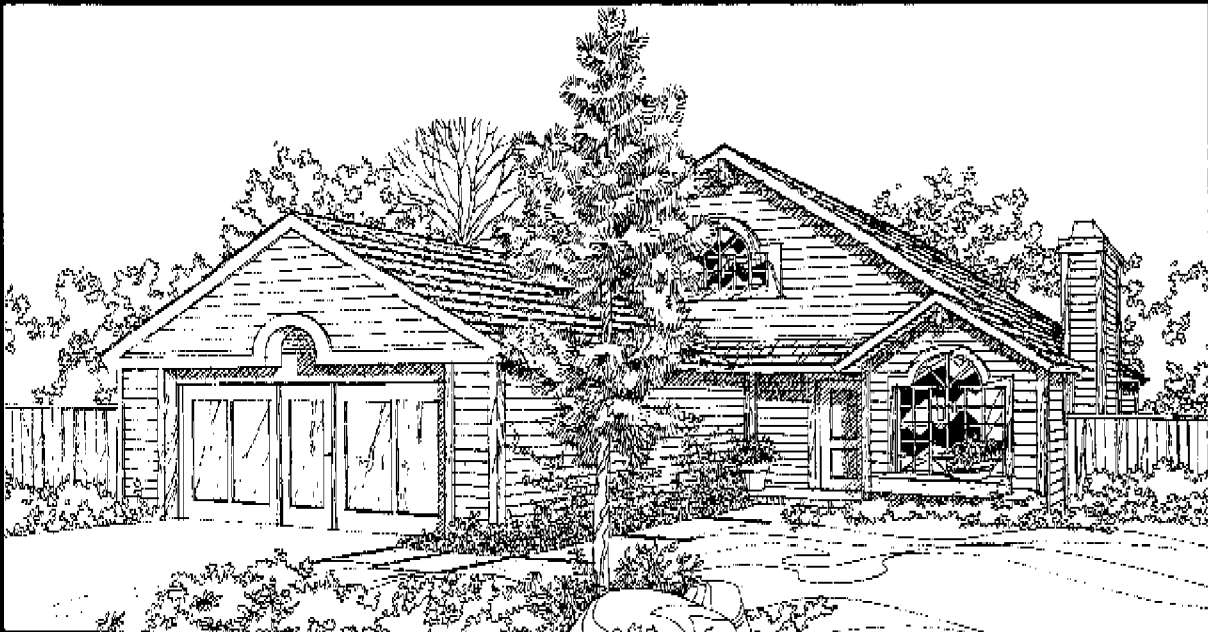
Carmel Mountain Ranch

Waterfield/Laurels

Style A



Style B



Young families will appreciate the versatility this two-bedroom/two-bath plan offers. Downstairs, you'll find space for a formal dining room or casual family room. Upstairs, the loft can double as an office, den or exercise area.

1,243 sq. ft.



PLAN 2

In our continuing policy of research and improvement, Fredricks Development Corporation reserves the right to change product design specifications, materials, prices and terms without prior notice.

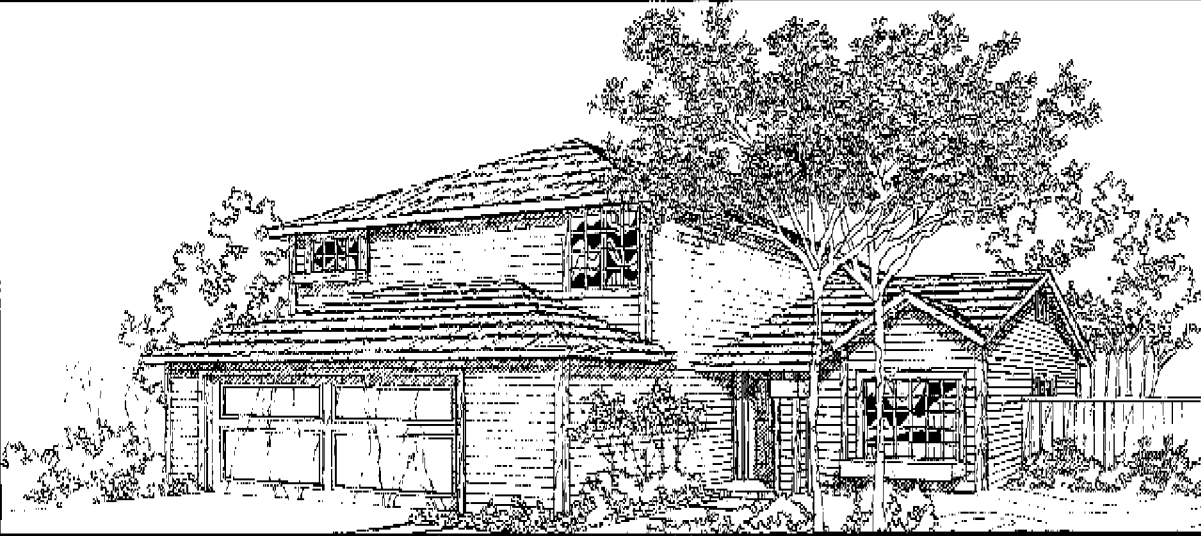


Carmel Mountain Ranch

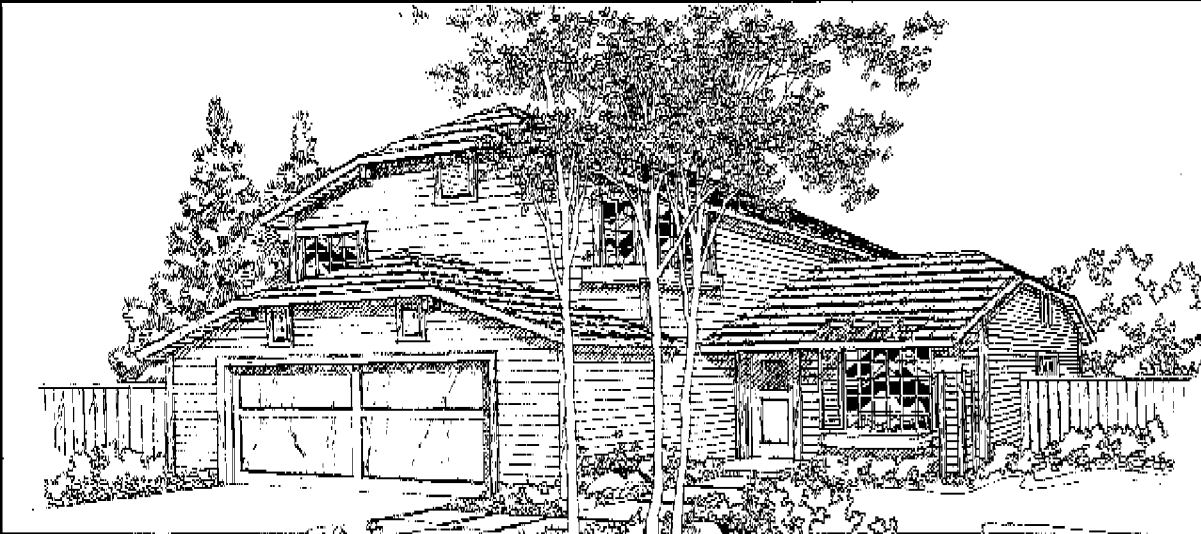
Plan 3

Waterfield/Laurels

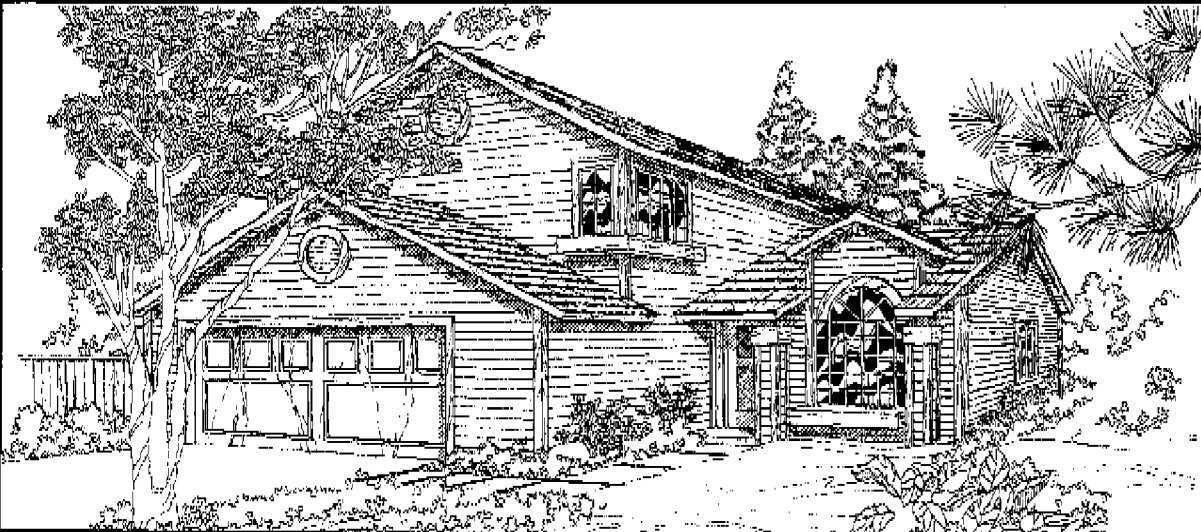
Style A



Style B



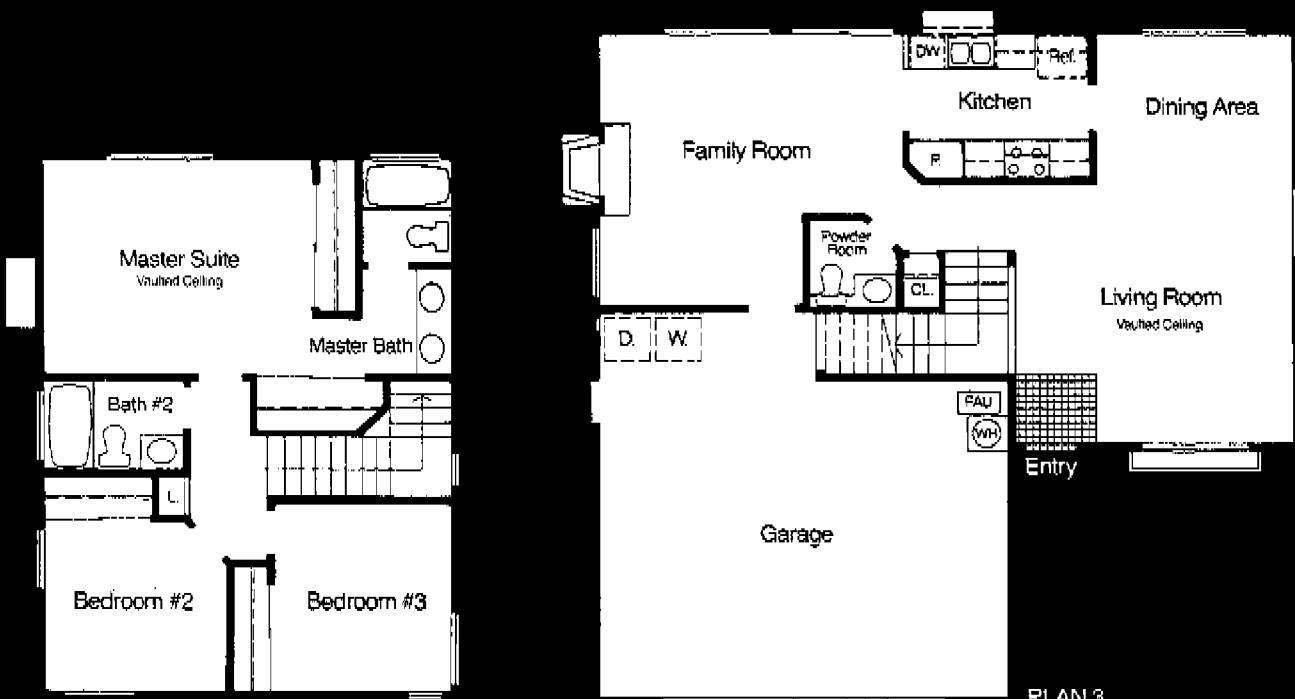
Style C



Plan 3

Upstairs and down, there's plenty of space for the varied needs of a growing family in this three-bedroom plan with family room, formal dining room, and 2½ baths. The spacious kitchen/family room has ample room for a dining nook.

1,461 sq. ft.



PLAN 3

Windows and doors shown with standard finish.

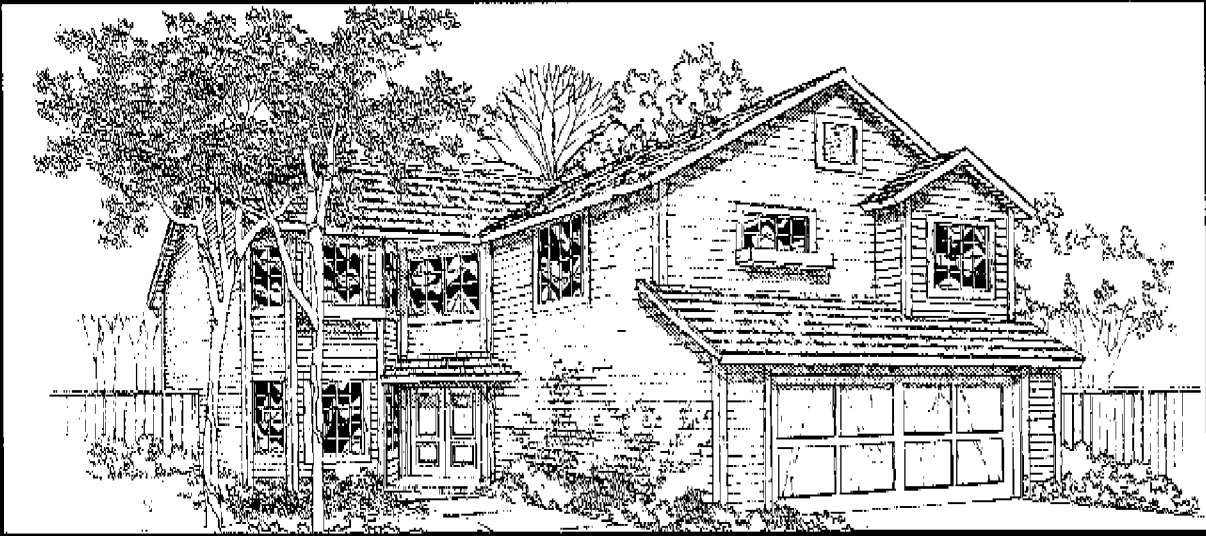
In our continuing policy of research and improvement, Fredricks Development Corporation reserves the right to change product design specifications, materials, prices and terms without prior notice.



Carmel Mountain Ranch

Waterfield/Laurels

Style A



Style B



Style C



Plan 4

Our largest plan with three bedrooms, 2½ baths, a formal dining room and a family room is perfect for the mature family. The upstairs master bedroom suite features a casual corner seating area for being alone to read or relax.

1,602 sq. ft.



PLAN 4

In our continuing policy of research and improvement, Fredricks Development Corporation reserves the right to change product design specifications, materials, prices and terms without prior notice.

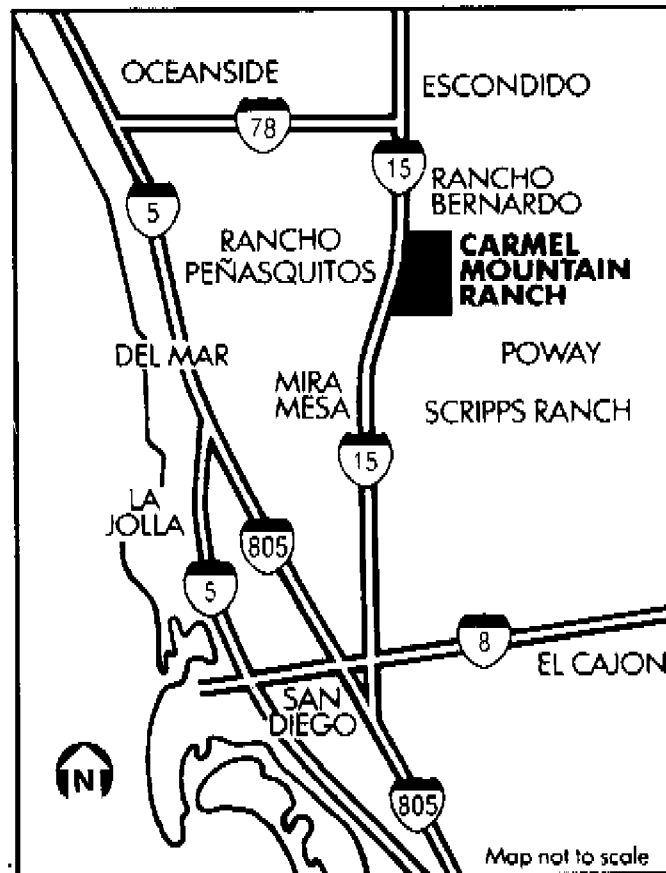


Waterfield/Laurels

Your new home is located in the southwest corner of Carmel Mountain Ranch, a 1,500-acre master-planned community 17 miles north of downtown San Diego.

Here you will be close to the many amenities Carmel Mountain Ranch will offer including an 18-hole championship golf course and a major regional shopping center.

To reach Carmel Mountain Ranch and Waterfield/Laurels, take I-15 to Carmel Mountain Road and follow the signs to the Waterfield/Laurels sales office.



Carmel Mountain Ranch