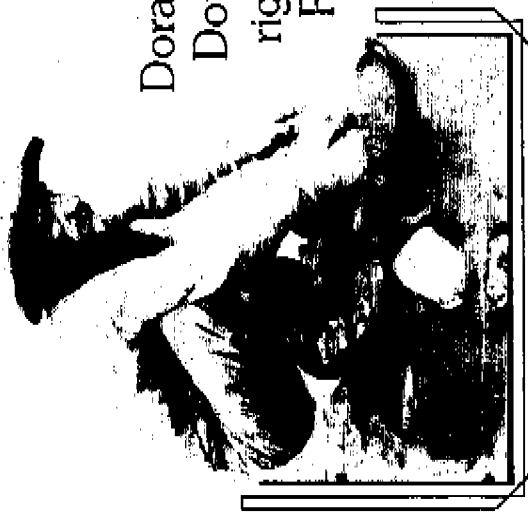


# EUREKA!



*1948 Award: recipient of gold was discovered at Appleton in 1948.*

Dorado has been discovered at Rancho Bernardo.

Dorado may have once been a mythical city of gold. But right here and now, it's a very real find. Dorado is Rancho Bernardo's newest community of family homes. Homes built in the California tradition.

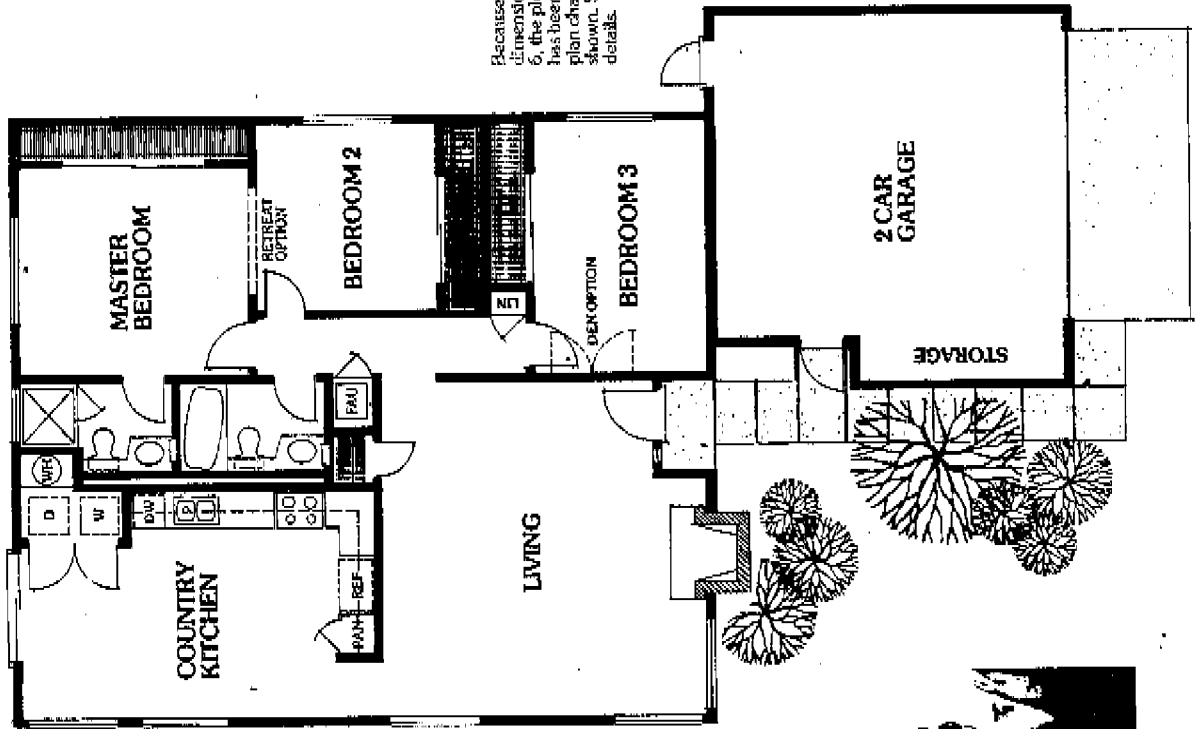
Take a look at Dorado's clean, California designs by architect William L. Russell, A.I.A. Vaulted ceilings, open spaces, rough wood accents, country kitchens and wrap-around windows. You can stake your claim on a three or four bedroom model.

Take a look at the surrounding territory too, Rancho Bernardo's active Westwood neighborhood.

The Westwood Club sports an Olympic size swimming pool, four tennis courts, a handball-racquetball court, indoor gym and children's play park. Baseball and soccer fields too. It's all yours for an annual homeowner's fee.

Discover Dorado. Discover a real find at Rancho Bernardo.

# OVERLAND



Because of a change in lot dimensions in units 4, 5 and 6, the plotting of the garage has been modified and floor plan changed slightly as shown. See salesperson for details.

*Plan Book  
1312 sq. ft.*

*In a cabin in a camp,  
Excavating for a mine,  
Bunked a mine, Astoria,  
And his daughter's coming.*

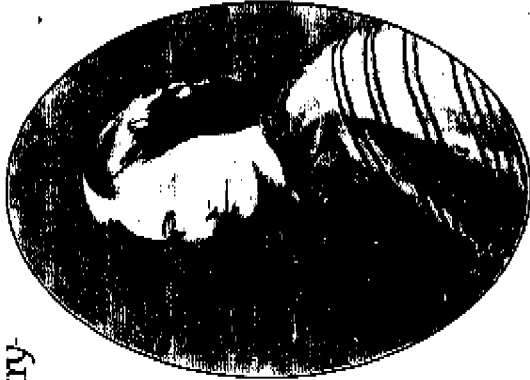


### 3 Bedrooms, 2 Baths.

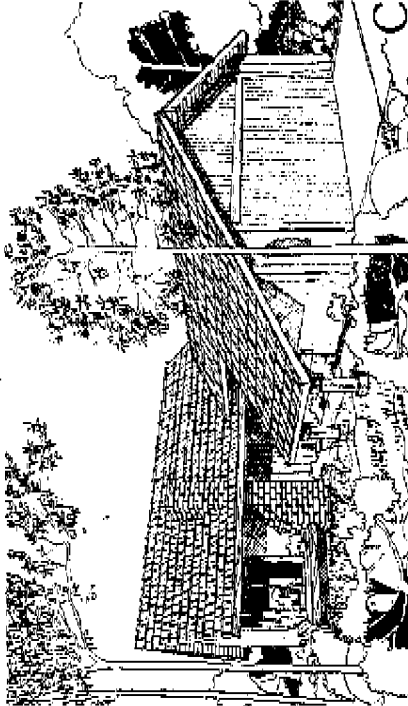
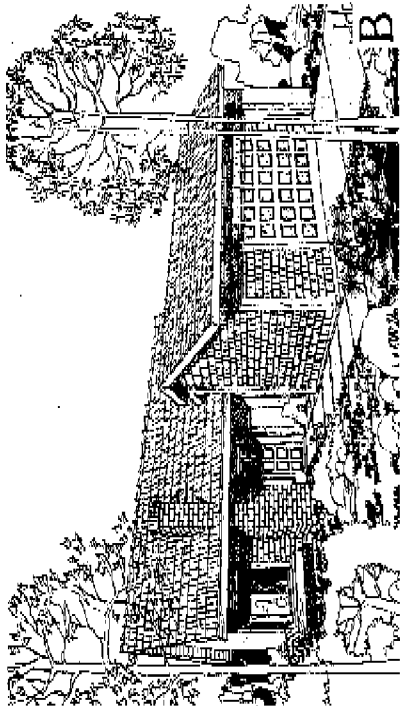
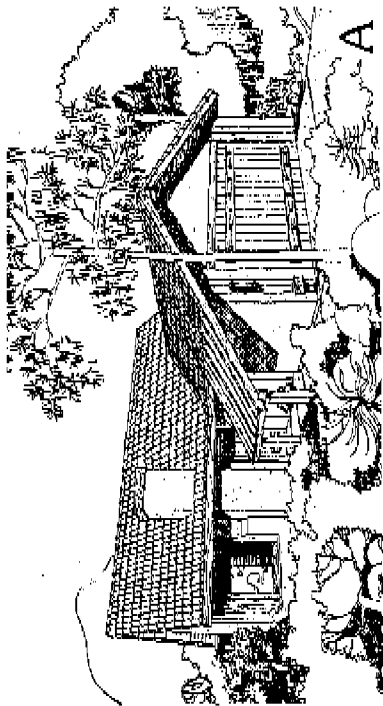
This home is just right for small families. Or just for the two of you. Especially when you choose our private retreat option opening off the master bedroom. It's a safe spot for your antique bottle collection or a quiet spot for late night reading by lantern light. There's a third bedroom for children and guests. Or you can choose an optional den.

In the living room, a wrap around window lets in afternoon sunshine and a fireplace warms up cool nights. The vaulted ceiling soars up over a half wall, just the spot for a cascade of old fashioned ivy. Then down again into the country big kitchen.

Three Overland exteriors—each with rough sawn wood trim, a gable roof and chimney accent.



*"the way we build character"*

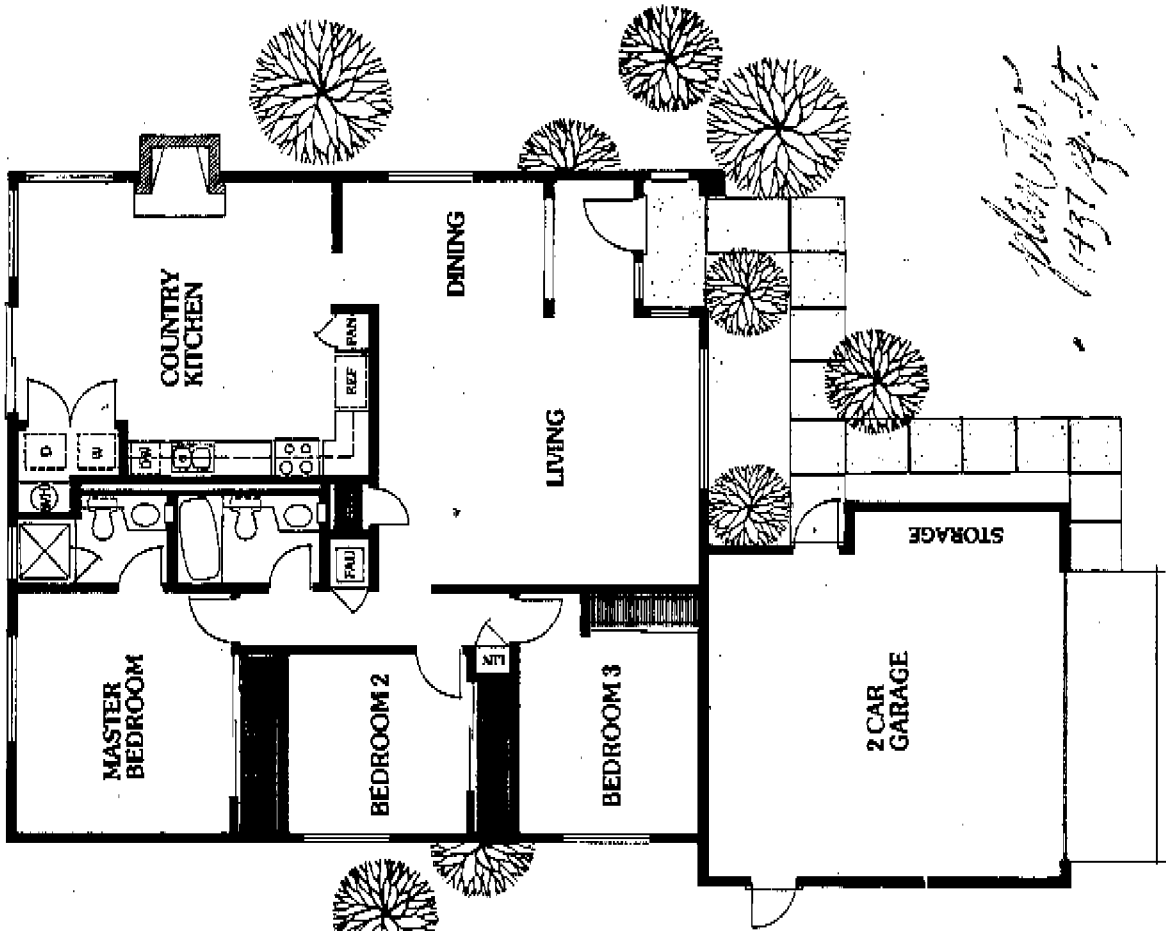


# BUTTERFIELD

*Don't forget!  
I can make copies to have you see how  
I will work to have anything in this world.*



*My friend, I'm not  
sure you're  
going to see  
planning?*



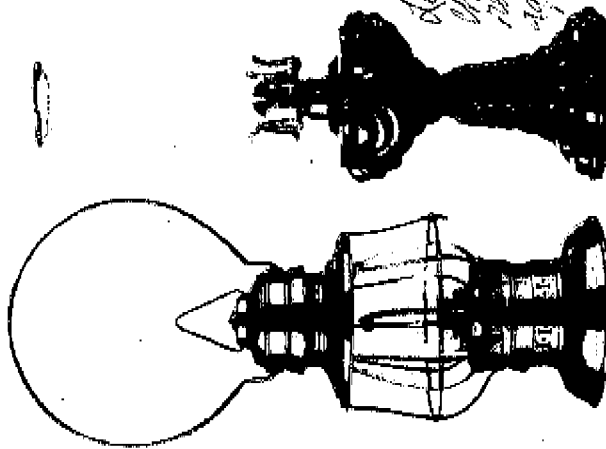
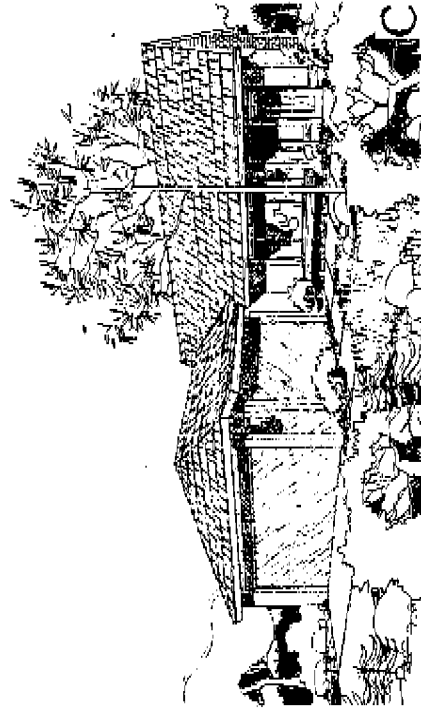
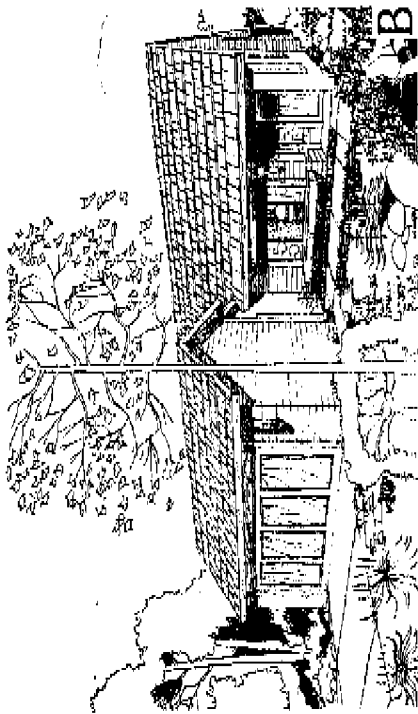
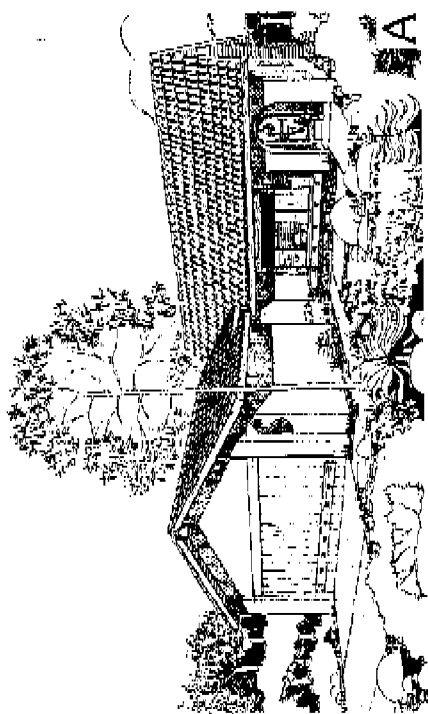
Because of a change in lot  
dimensions in units 4, 5 and  
6, the plotting of the garage  
has been modified and floor  
plan changed slightly as  
shown. See salesperson for  
details.

*John Doe  
1937 19 19*

### 3 Bedrooms, 2 Baths.

A traditional California arch welcomes you and your guests in the entry. From there, a feeling of wide open space takes over.

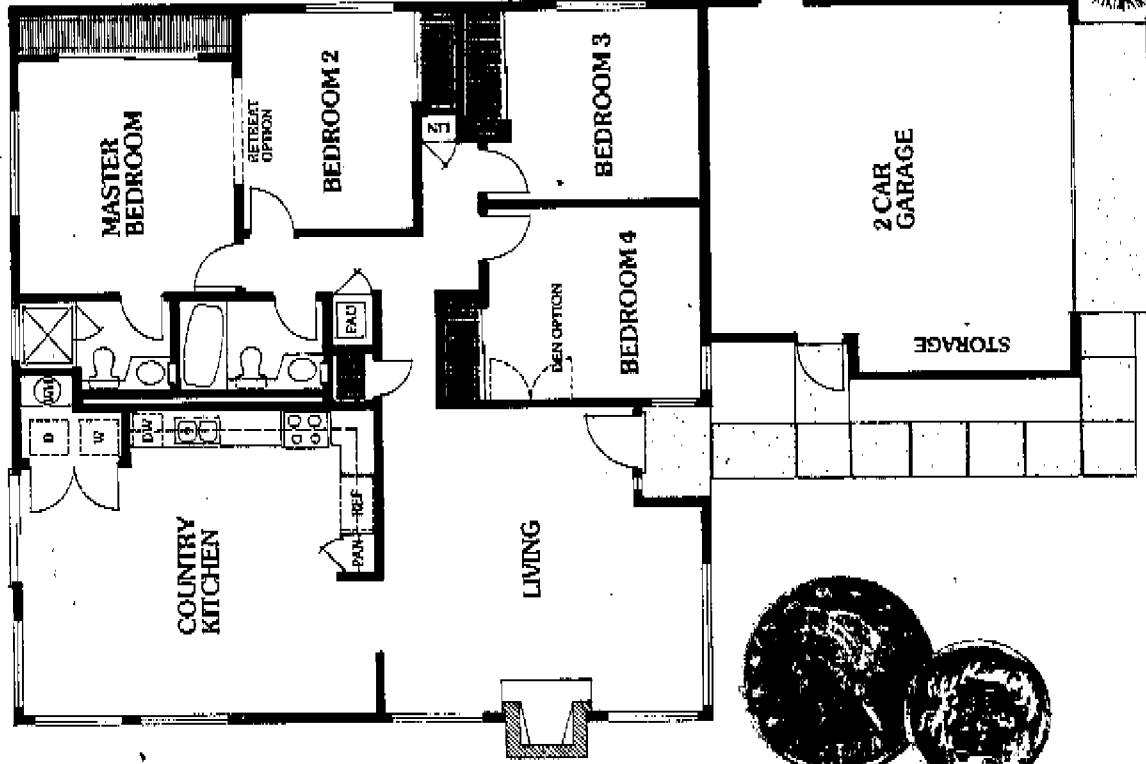
This home was made for people—special friends and your own family. Serve guests a hearty roast beef dinner in the separate dining area. Or cook up a buckboard buffet for the family to eat around the kitchen hearth. It's all easy in a country kitchen with plenty of work space and a pantry large enough for a summer's worth of preserves. Come 'n get it. The Butterfield.



*Get the Butterfield home. It's the only one of its kind. Call 760-414-9101 for more information.*



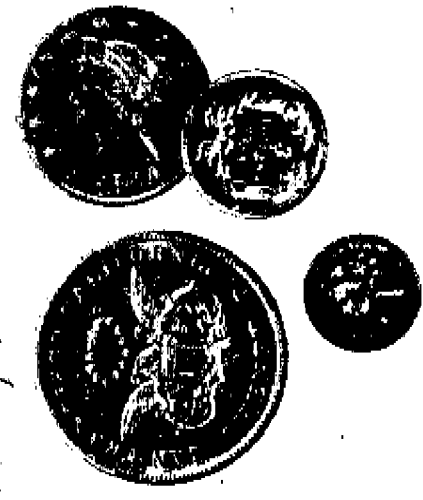
# CIMARRON



Because of a change in lot dimensions in units 4, 5 and 6, the plotting of the garage has been modified and floor plan changed slightly as shown. See salesperson for details.

*Phyllis [unclear]  
12/15/07*

*Looks great and  
we're excited! do i really  
ever doubt? really.*



### 4 Bedrooms, 2 Baths.

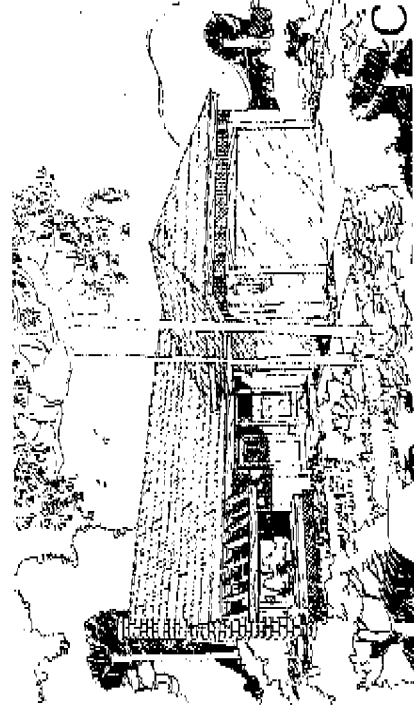
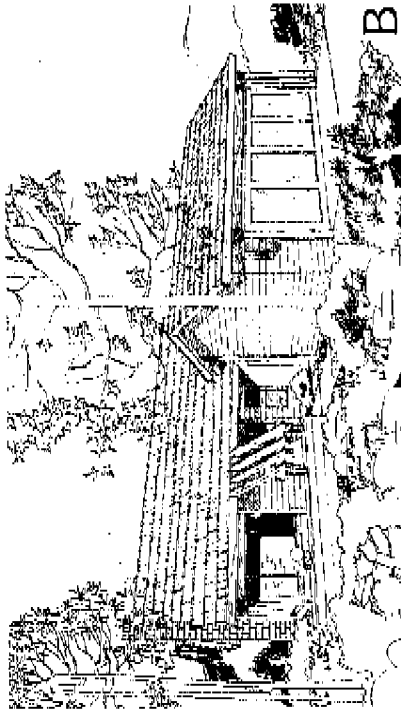
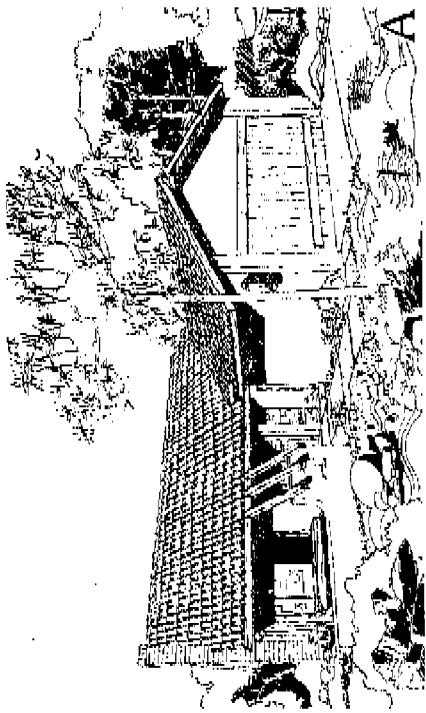
A vaulted ceiling that rivals the high Sierras and a kitchen big enough for a whole camp of 49'ers. Plenty of space for your family.

And this is a home built for family living. For roasting popcorn in the fireplace. For pancake breakfasts on the weekend. For mom and dad getting away from it all in their own master suite with a private retreat option. You can also choose four bedrooms or three and a den.

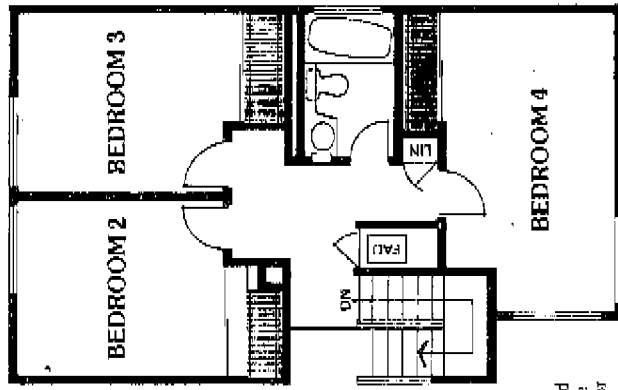
Outside, a plant ledge and a wood beam trellis accent the Cimarron's angular roof lines. Three rustic elevations.



*"Wanted: 100 to 300 individuals, with family and frequent company, for 2014 and to be married by 2018 Golden State."*



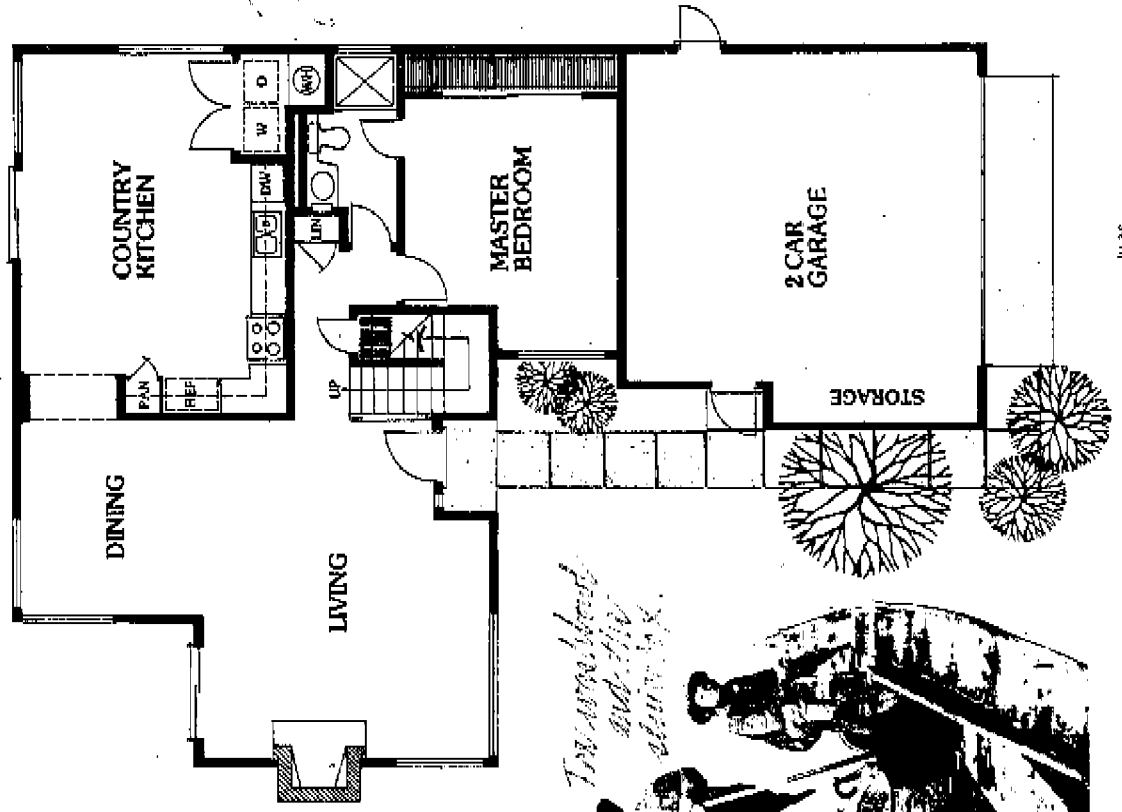
# SANTA FE



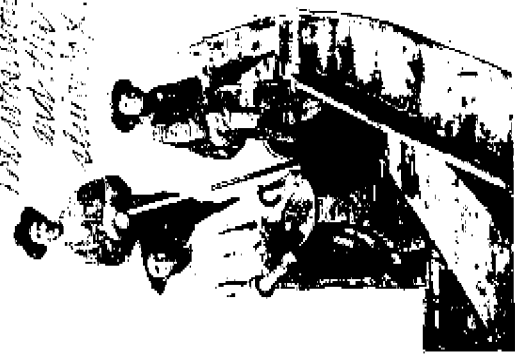
*Master Bed  
11'10" x 11'6"*

Because of a change in lot dimensions in units 4, 5 and 6, the plotting of the garage has been modified and floor plan changed slightly as shown. See salesperson for details.

*Master Bed  
11'10" x 11'6"  
- Santa Fe  
11/10/07*



*Two more bedrooms  
and a living  
dining area.*



As  
Person