



Windstone

a jackson-pendo community



Windstone

a jackson • pendo COMMUNITY

Estate One ~

from \$949,000

3,175 SQUARE FEET
FOUR BEDROOMS, 3.5 BATHS, COURTYARD, 4-CAR TANDEM GARAGE

Estate Two ~

from \$1,024,000

3,646 SQUARE FEET
FOUR BEDROOMS, 3.5 BATHS, OFFICE, 3-CAR TANDEM GARAGE

Estate Two X ~

from \$1,084,000

4,049 SQUARE FEET
FIVE BEDROOMS, 4.5 BATHS, OFFICE, 3-CAR GARAGE

Prices effective as of August 26, 2006

Square footage is approximate

Product and pricing based on availability

Builder reserves the right to modify pricing without obligation or further notice

www.JacksonPendo.com

Sales Center ~ 300 Jonah Road, Escondido

760.432.8349

Welcome to the home you've wished for, aspired to,
and worked toward: Windstone, presented by
Jackson Pendo. This exclusive enclave of estate
homes represents the pinnacle of luxurious living.
Nestled on a ridgeline in the hills of Escondido,
Windstone is a rare jewel. Arriving home is a stirring
and welcoming sight, every time. Inside, you'll be
surrounded by the well-conceived design elements
and beautifully executed details that make your home
the heart and soul of your family's life for years to come.

Live Inspired at Windstone.

jackson pendo development company.



WINDSTONE FEATURES

CAPTIVATING ON THE OUTSIDE.

- ✦ Elegant one- and two-story homes of early California Spanish and Tuscan architecture
- ✦ Vibrant exterior colors in sand finish with stone, decorative tile or wrought iron accents*
- ✦ Stylish, fire resistant concrete tile roofing in architecturally coordinated color palettes
- ✦ Stubbed gas connection for backyard barbeques, post-tension concrete foundation and exterior rain gutters
- ✦ Architecturally themed exterior coach lighting
- ✦ Front yard landscape includes sod and irrigation system

INSPIRING ON THE INSIDE.

- ✦ Dramatic formal entry foyer, raised panel interior doors and bulbouse drywall corners
- ✦ Expansive family and living rooms with wood-burning fireplaces, decorative mantles, hearths and surrounds (Estates One, Two and Two X)
- ✦ Spacious formal dining areas, optional wine storage*, media niches and optional cabinetry throughout
- ✦ Luxurious guest suite with private bath (Estate Two X), plus optional office at bedroom 4 (Estate One)
- ✦ Over-sized secondary bedrooms pre-wired for telephone and cable TV
- ✦ CATV and RG-6 structured wiring system throughout
- ✦ Designer light fixtures with decorative switches
- ✦ Roomy interior laundry areas (and mud room in Estates Two and Two X) with white euro cabinetry and laundry sink
- ✦ Stair System with stain grade handrails and newel posts, completed with pickets (Estate Lot #17)

KITCHENS WITH SUPERB TASTE.

- ✦ Raised-panel beechwood cabinetry in designer 'honey' stain wth finished interiors, hidden hinges and adjustable shelves
- ✦ Striking granite kitchen slab countertops with 6" backsplash in a selection of finishes
- ✦ Gourmet center islands and under-cabinet lighting
- ✦ Airy breakfast nooks and generous kitchen pantries for storage
- ✦ Jenn-Air 5 burner gas cooktops, self-cleaning double oven, built-in dishwasher and microwave
- ✦ Double cast-iron sink with Moen plumbing fixtures and pull-out spray wand
- ✦ Refrigerator area plumbed for ice maker

LUXURIOUS MASTER SUITE.

- ✦ Elegant master baths with luxurious oval tubs (including tile deck) and hand-set tile showers
- ✦ Distinctive tile countertops (8x8) with 6-inch backsplash and chrome Moen fixtures
- ✦ Stately His and Hers china sinks with vanity
- ✦ Expansive walk-in closets with ample shelving in select locations and mirrored closet doors

EFFICIENT. WATER & ENERGY SAVINGS.

- ✦ 75-gallon energy efficient water heater
- ✦ White vinyl dual-glazed windows with Low-E glass
- ✦ Dual-zoned, gas, central forced air heating and air conditioning, including night set-back thermostat
- ✦ Gas hook-up in laundry room
- ✦ Cast-iron waste lines in select areas for noise reduction; copper plumbing throughout
- ✦ Fire sprinklers throughout

A 4-STAR GARAGE.

- ✦ Completed with painted drywall texture and fluorescent lighting
- ✦ Architectural 8-foot insulated sectional roll-up garage doors with automatic openers and transmitter
- ✦ 3-Space garages with ample storage, 4-space garage on selected lots (Estate One)

OPTIONS & ENHANCEMENTS.

- ✦ We are pleased to offer extensive upgraded features. See your Community Sales Manager for a complete list of the customizing opportunities available.

* *Varies by floor plan and elevation*

** *Floor plans, pricing, features and specifications subject to change at anytime*

ESTATE ONE

Approximately 3,175 sq. ft.

4 Bedrooms

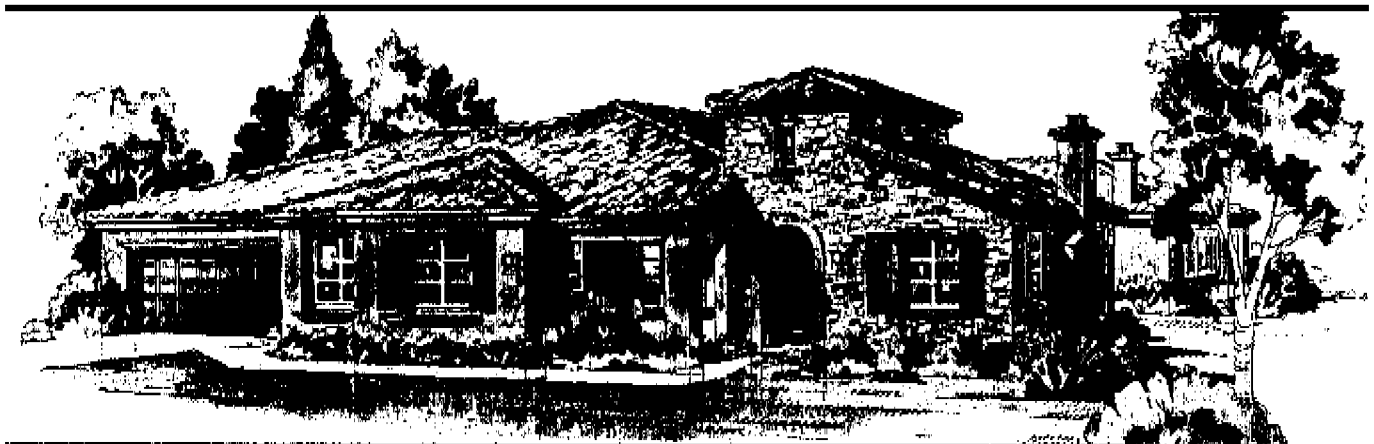
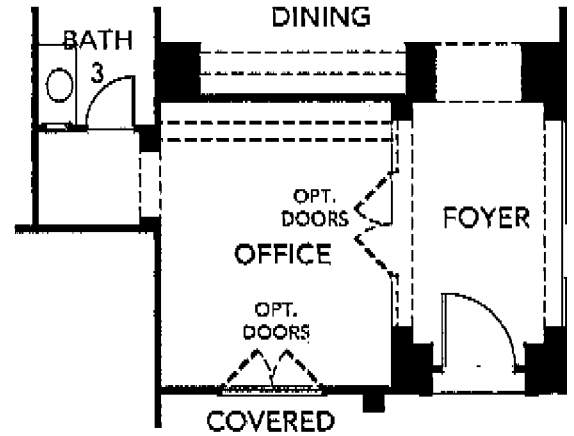
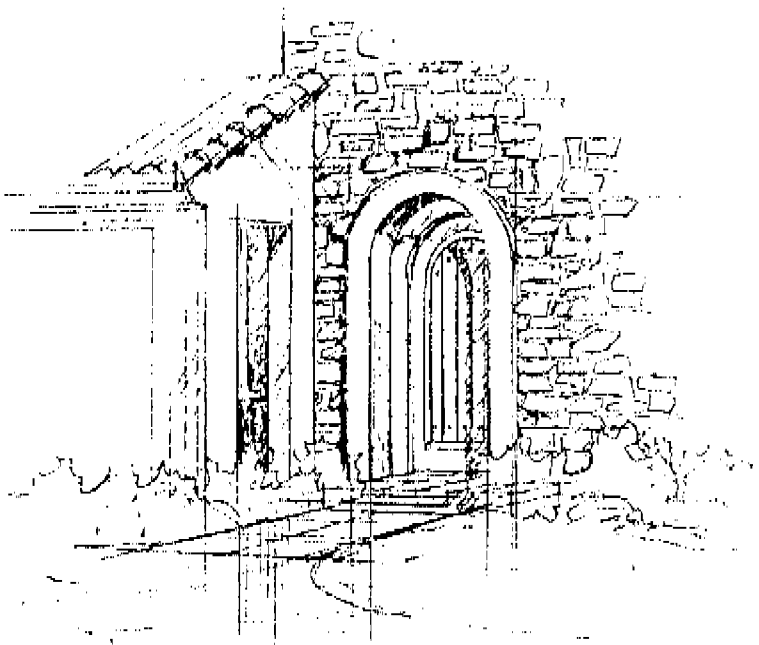
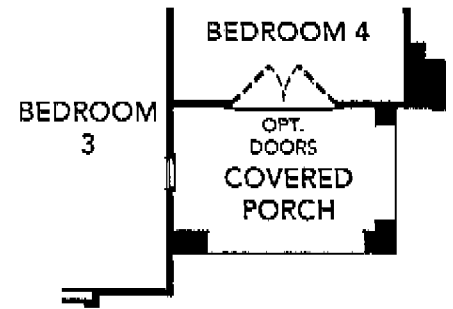
3.5 Baths

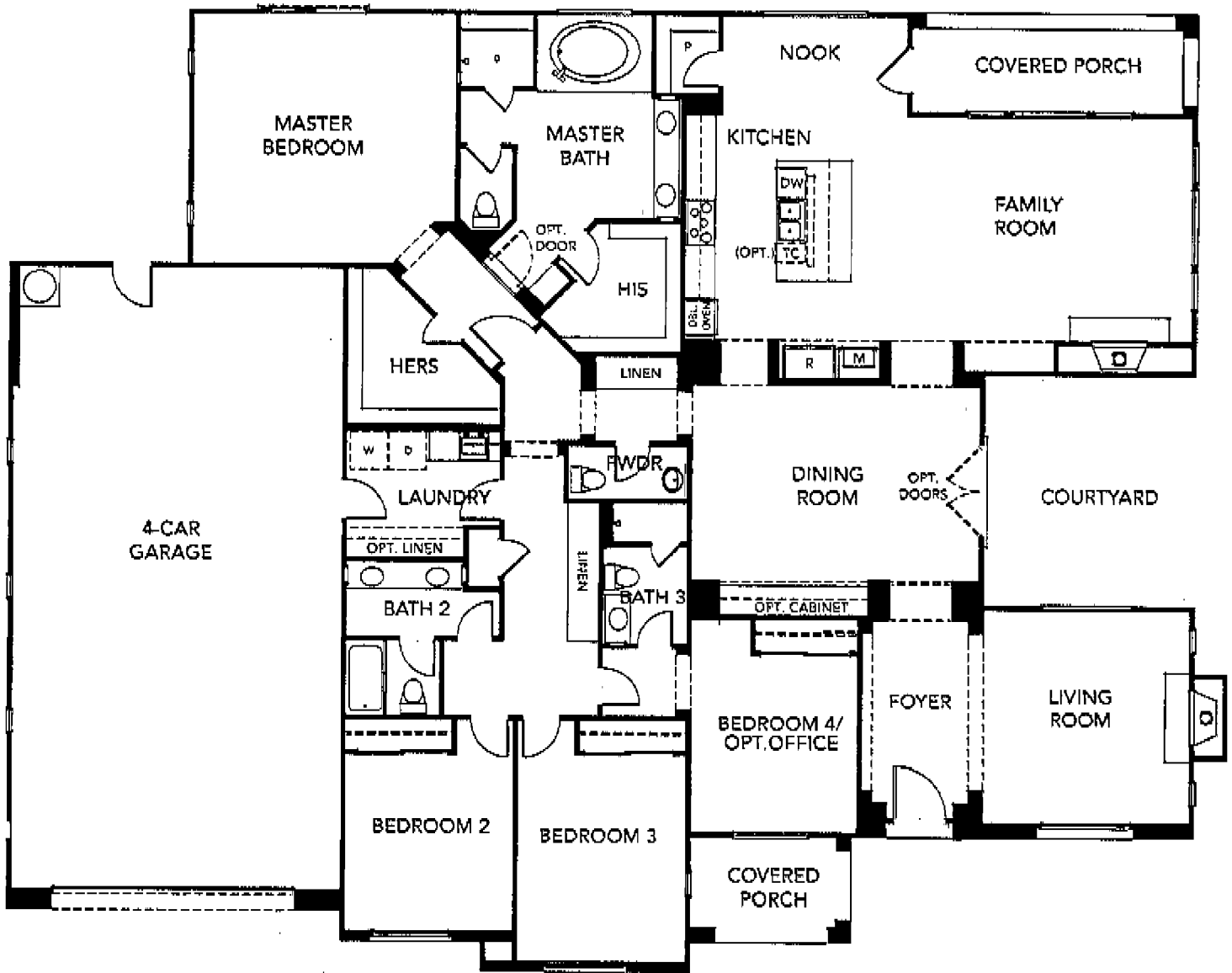
Courtyard

4-Car Garage

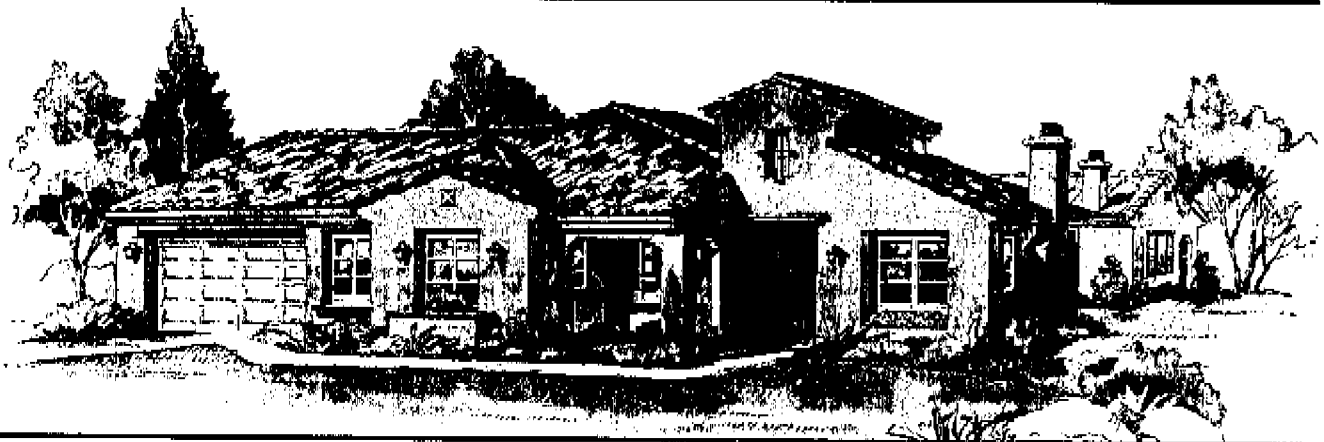
Approximately Half Acre Lots

Optional Office at Bedroom Four





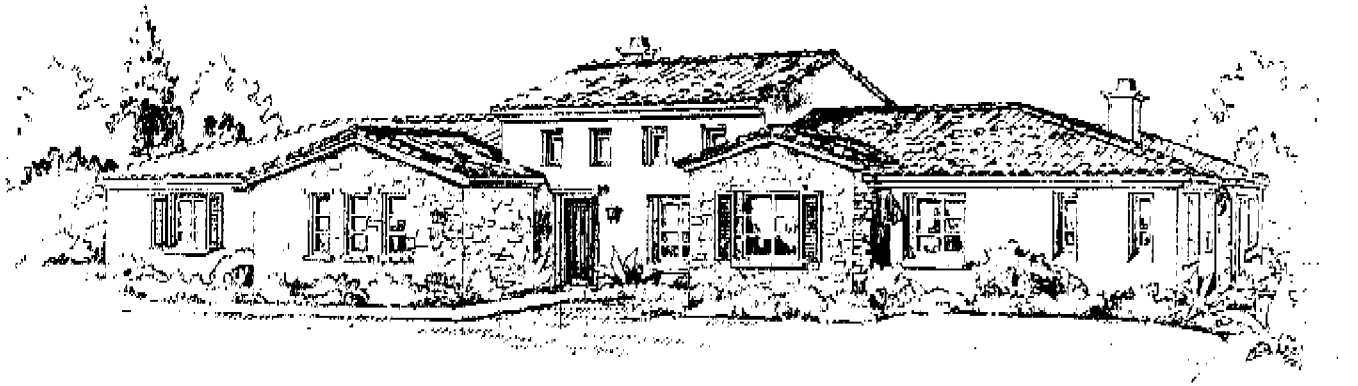
This plan, pricing, features and specifications subject to change at any time. Windows, doors and appliances vary by floorplan and elevation. Renderings are artist's conception.



Spanish

ESTATE TWO - TUSCAN

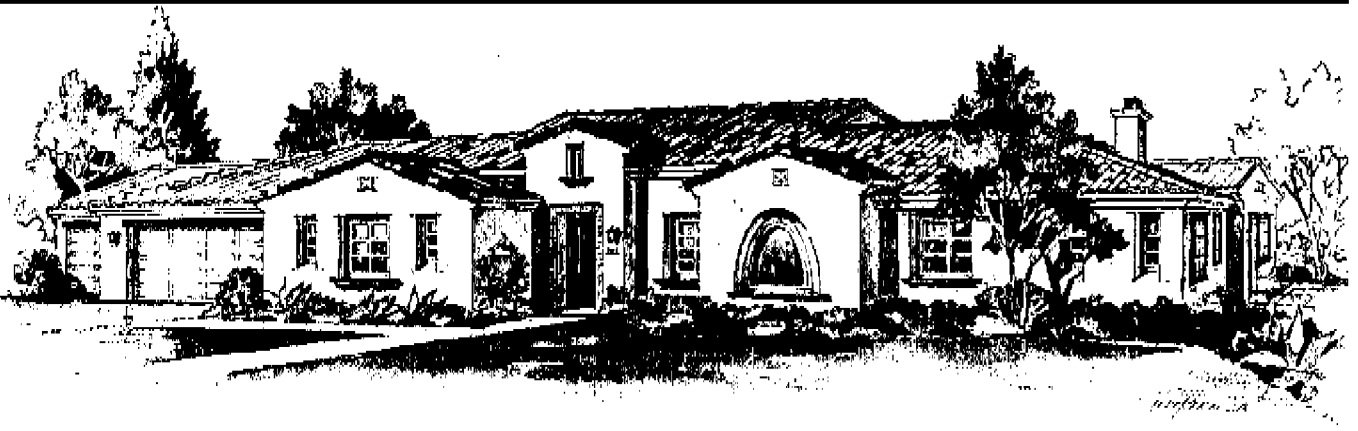
Approximately 3,646 sq. ft.
4 Bedrooms
3.5 Baths
Office
3-Car Tandem Garage
Approximately Half Acre Lots



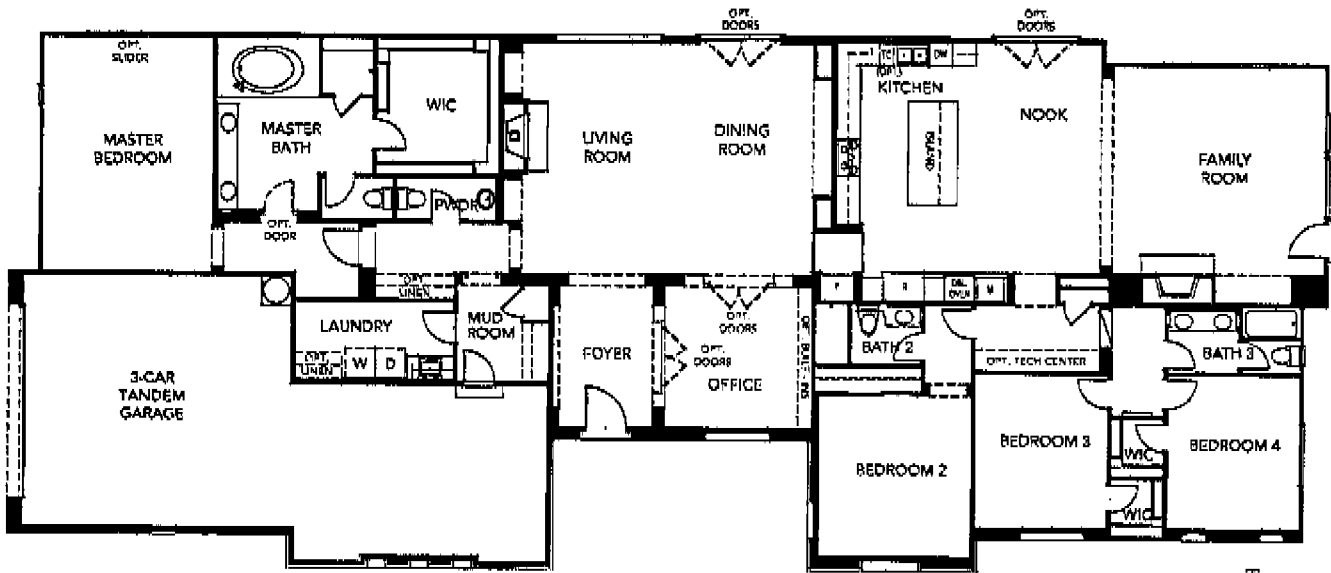
Tuscan

ESTATE TWO X - SPANISH

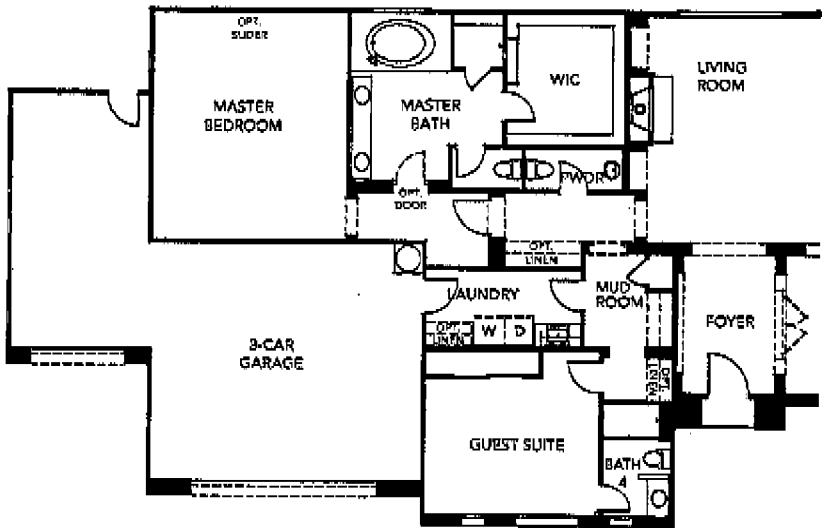
Approximately 4,049 sq. ft.
5 Bedrooms
4.5 Baths
Office
3-Car Garage
Approximately Half Acre Lots



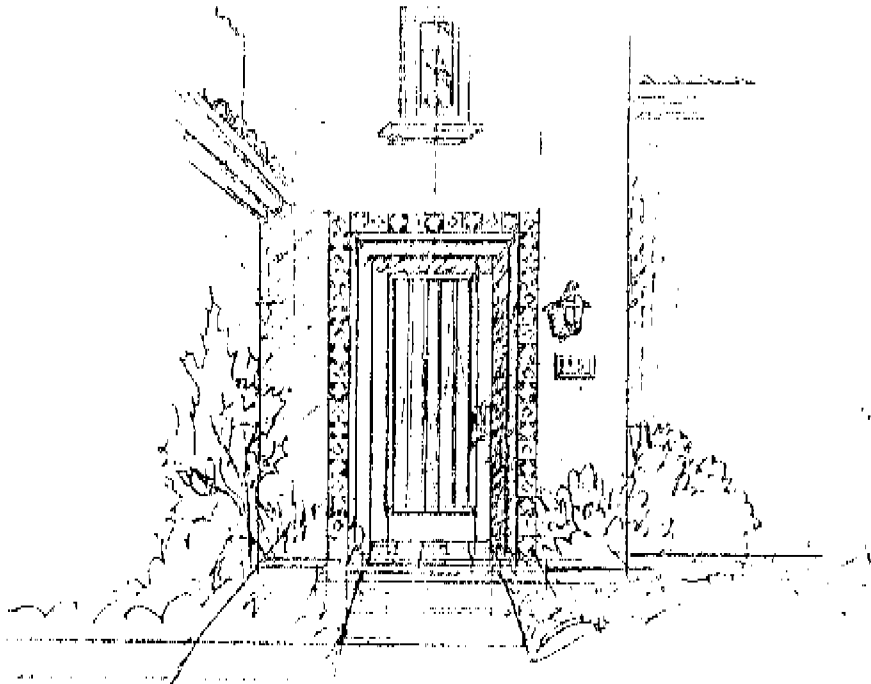
Spanish



Tuscan



Spanish

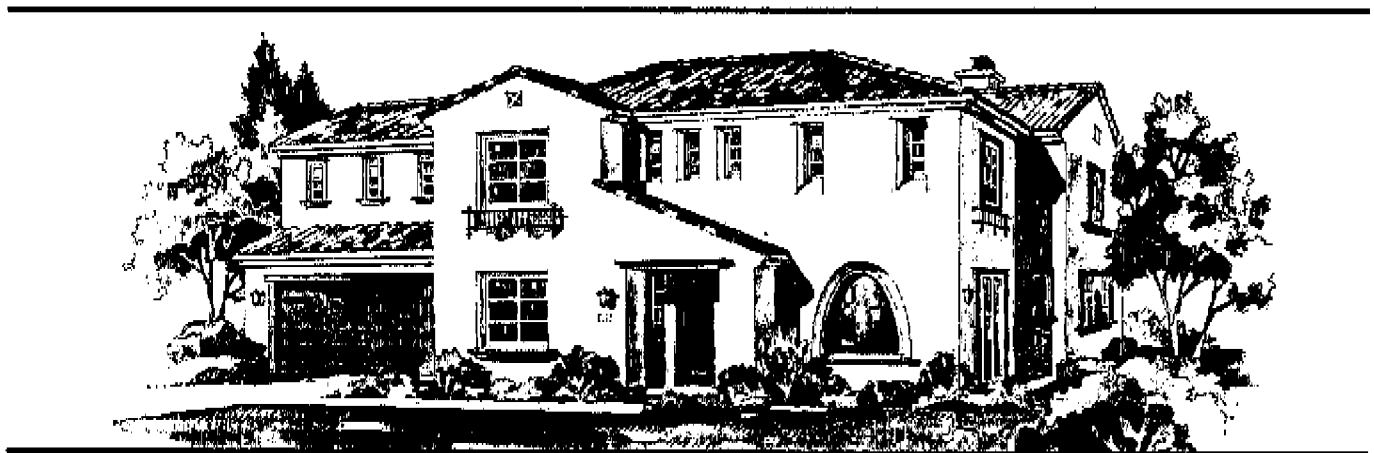
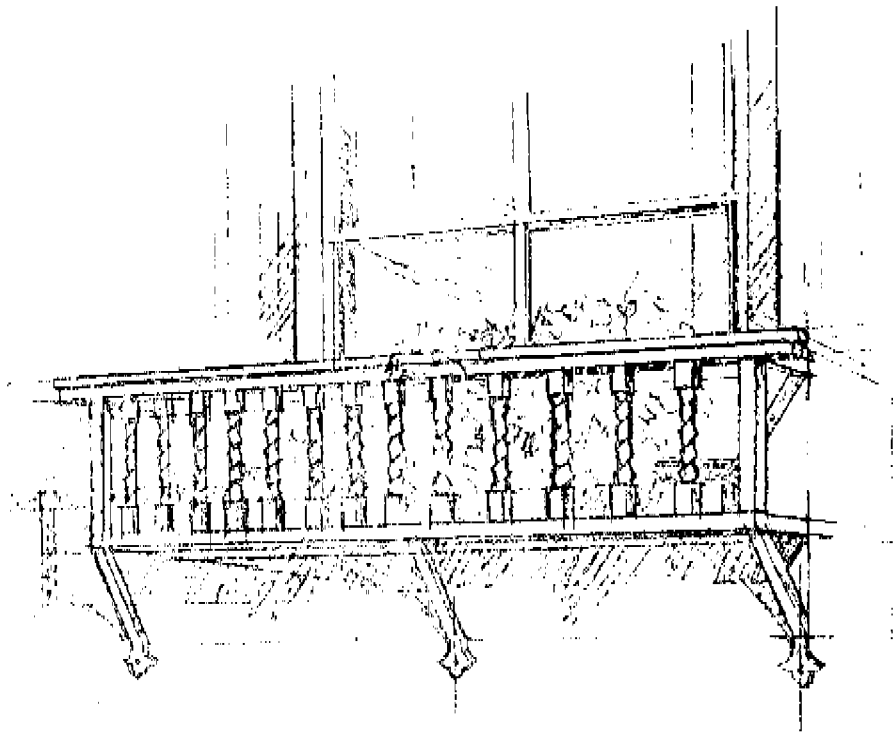


Illustration, concept, features and specifications subject to change at any time. Website, stock and prices vary by location and region. For more information, please contact your agent.

ESTATE LOT #17

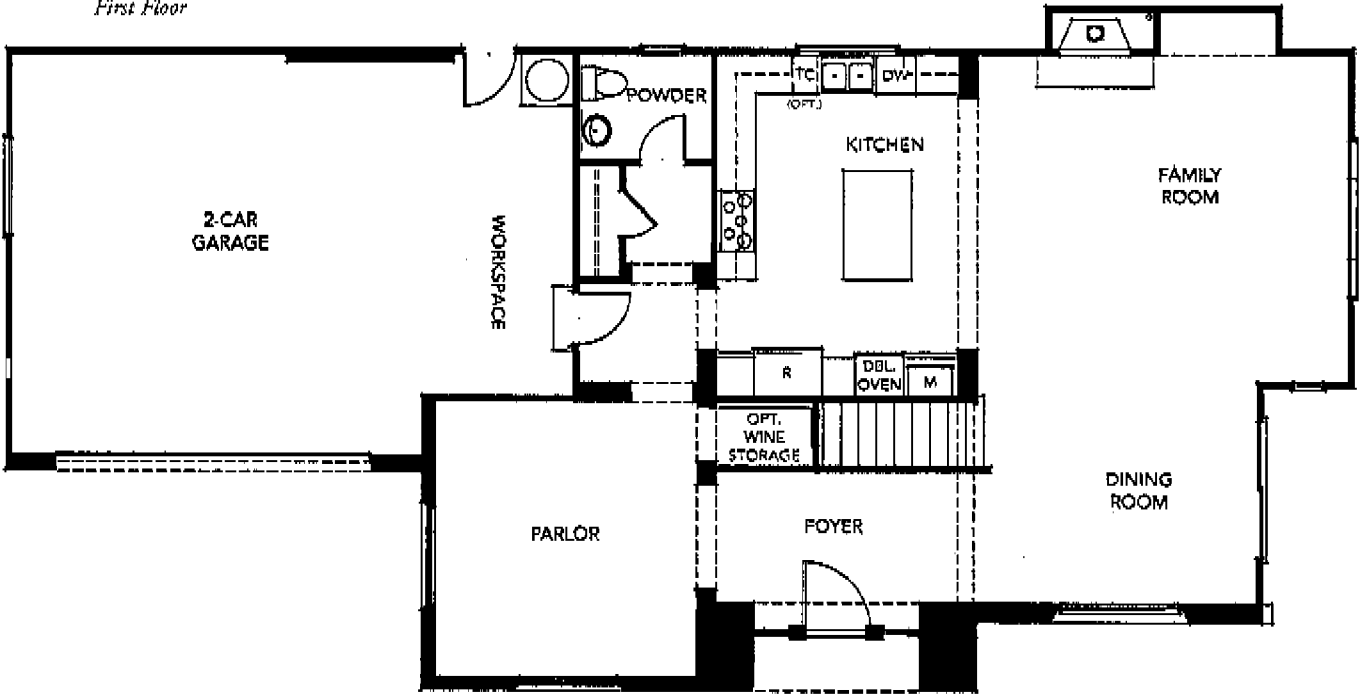
Approximately 2,900 sq. ft.
4 Bedrooms
2.5 Baths
2-Car Garage plus Workshop
Approximately Three Acre Lot

Optional Den at Bedroom Four

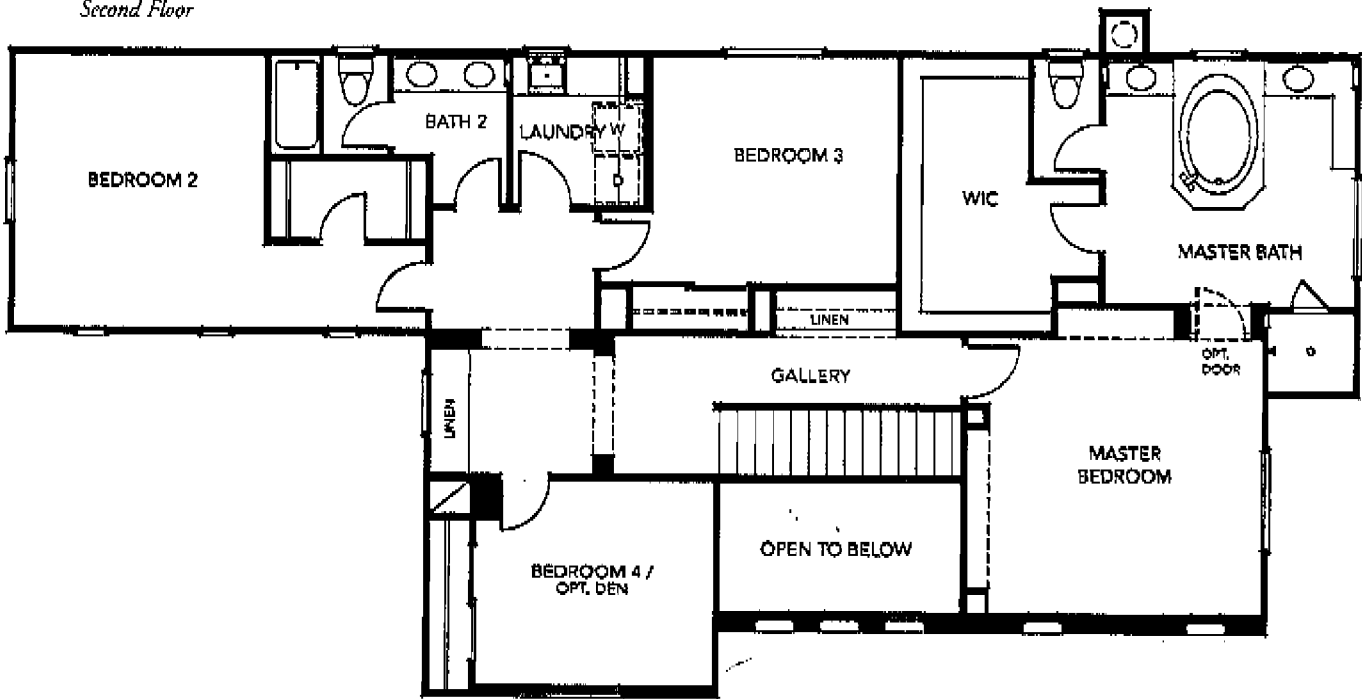


Spanish

First Floor



Second Floor





Driving Directions

North From Bear Valley Parkway:

Turn Right on Hayden Drive

Left on Jed Rd, Left on Jonah Road

*Windstone is located
at the top of Jonah Road*



Windstone

300 JONAH ROAD • ESCONDIDO, CA 92027

P: 760.432.8349

F: 760.738.8817



jackson.pendo.development.company

8530 LA MESA BLVD., SUITE 306 • LA MESA, CA 91941
PH/ 619.267.4904 | WWW.JACKSONPENDO.COM