

TORREY
GLENN

Residence One

• Approx. 2,999 to 3,233 sq. ft.

• Four bedrooms

• Three baths

• Bonus room

• Three-car garage

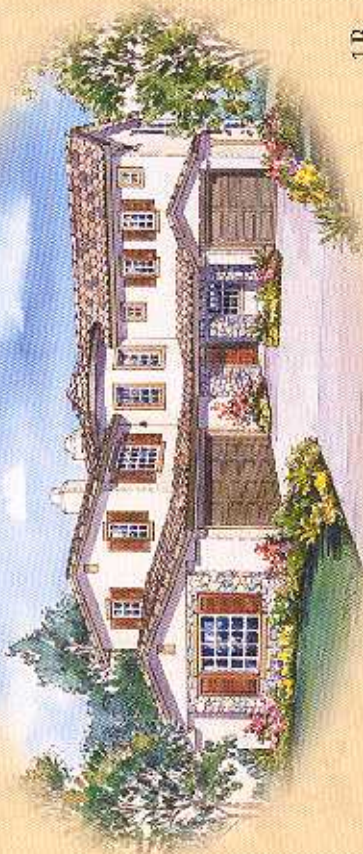
• Optional den

• Optional office

• Optional deck



Model 1A



1B



1C

Residence Two

- Approx. 3,315 to 3,544 sq. ft.
- Five bedrooms
- Four baths
- Loft
- Retreat/exercise room
- Three-car tandem garage
- Optional den
- Optional bedroom six
- Optional deck



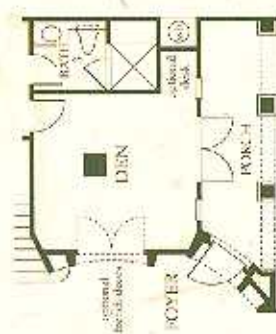
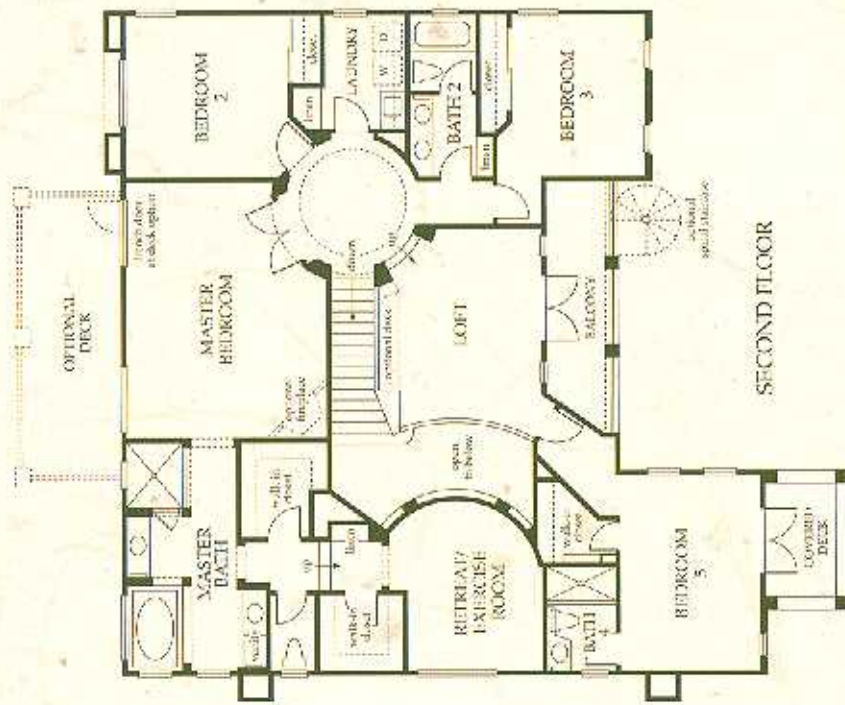
2A



Model-2B



2C



For other to improve our product to meet consumer needs, Western Wildlife Housing, Inc. reserves the right to modify features, specifications, plans, and pricing without notice and/or without obligation. All square footage is approximate. Model features are not to scale. Entry, ceiling, window, and wall configurations vary per plan and elevation. All measurements are within 1/8" tolerances. See Sales Representative for details. ©2002 Western Wildlife Housing, Inc.

Residence Three

- Approx. 3,739 to 3,985 sq. ft.
- Six bedrooms
- Five and one half baths
- Three car garage
- Optional den
- Optional office
- Optional bedroom seven
- Optional bonus room
- Optional deck



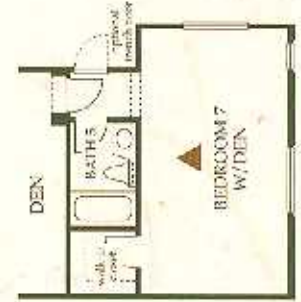
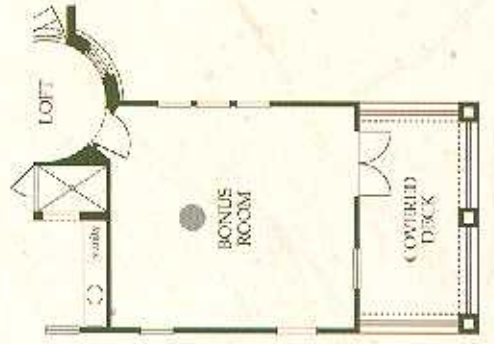
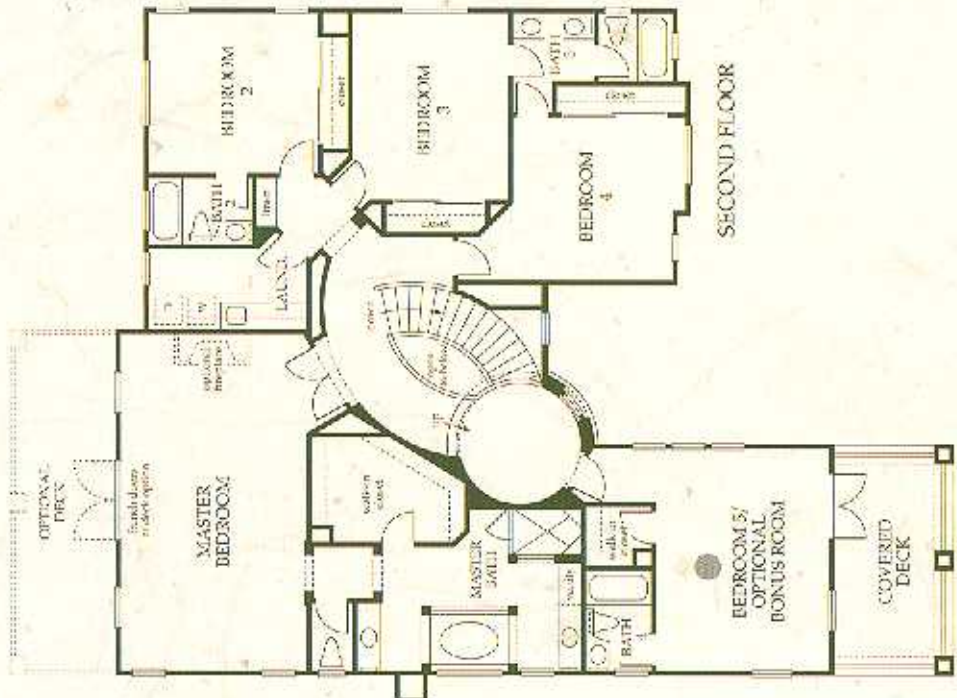
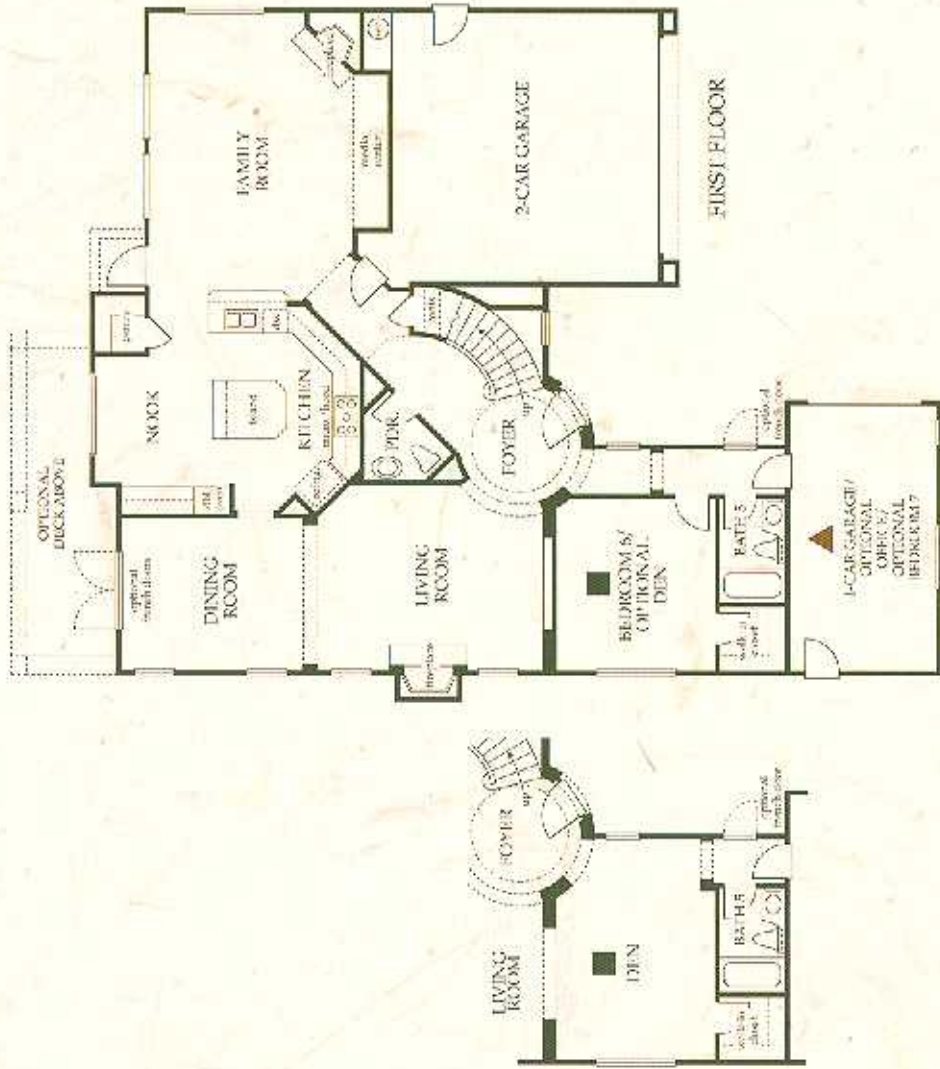
Model-3A



3B



3C



In an effort to improve our product to meet consumer needs, Western Pacific Housing, Inc. reserves the right to modify features, specifications, plans, and pricing without notice and/or call. All square footage is approximate. Not all features are available in all plans. Entry, ceiling, window, and wall configurations vary per plan and elevation. All windowings are artist's illustrations. The P or Three, E or Four, E or Five illustrations are artist's illustrations. See Sales Representative for details. ©2002 Western Pacific Housing, Inc.