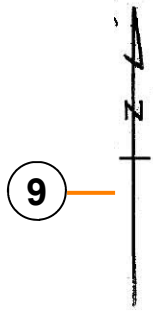


PLAT MAP REFERENCE GUIDE

PLAT MAP

1	2
2162	11
SCALE 1" = 60'	

*LA and SB Counties have 4 digit Book #'s as in the above "2162". Orange, Riverside and San Diego Counties have 3 digit Book #'s. No. California Counties can vary from 3 to 5 digits.

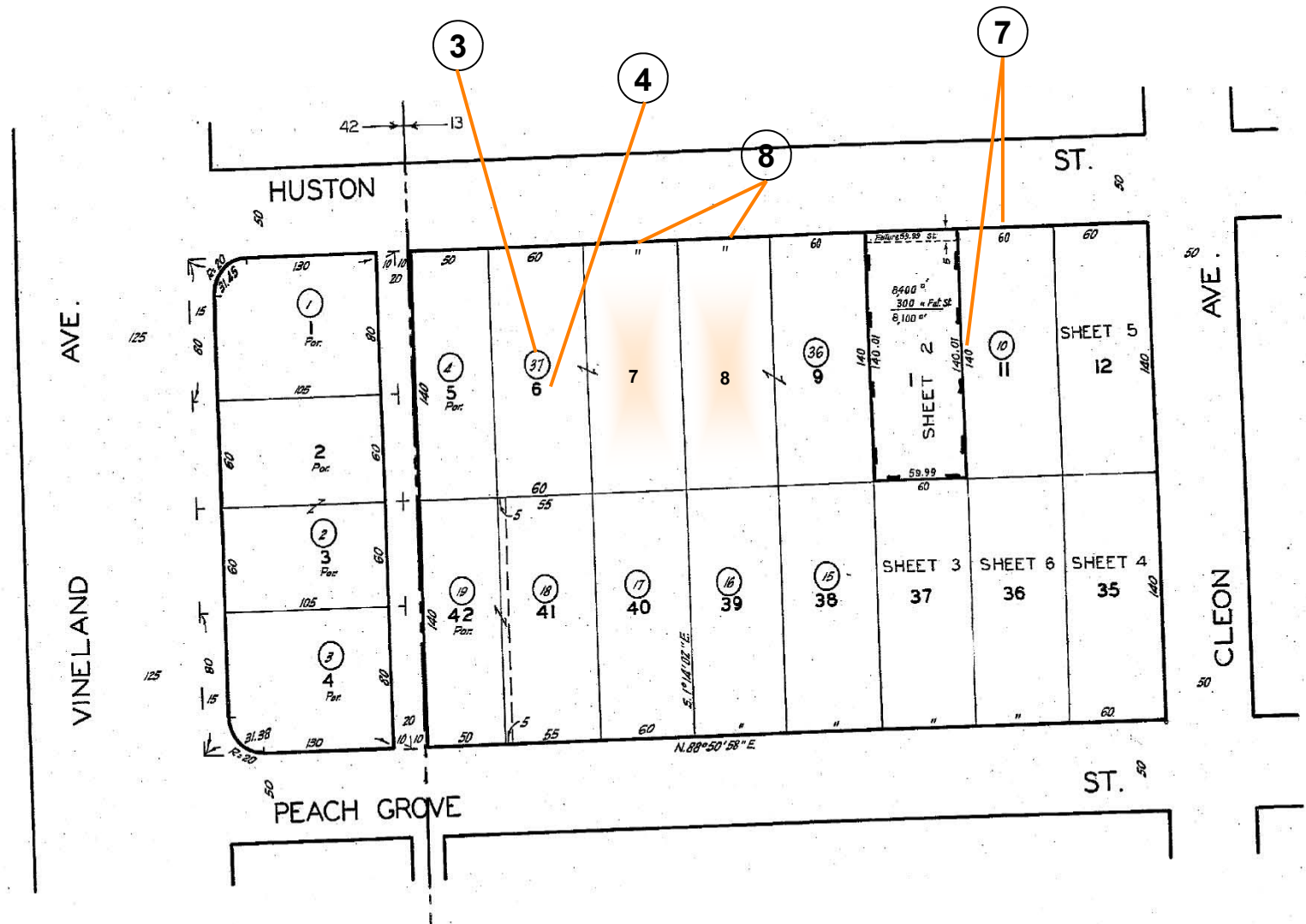


5

TRACT NO. 6088

M.B. 72-5

6



1. ASSESSOR'S BOOK NUMBER
2. PAGE NUMBER OF ASSESSOR'S BOOK
3. ASSESSOR'S PARCEL NUMBER ASSIGNED TO THE SPECIFIC LOT
4. LOT NUMBER
5. TRACT NUMBER

6. RECORDING INFORMATION OF TRACT
7. LOT DEMENSIONS (in feet)
8. INDICATES LOT DIMENSIONS EQUAL TO ADJOINING LOTS
9. NORTH / SOUTH INDICATOR