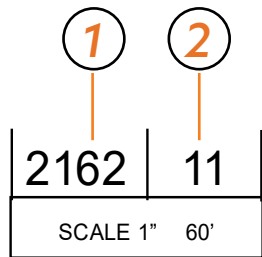


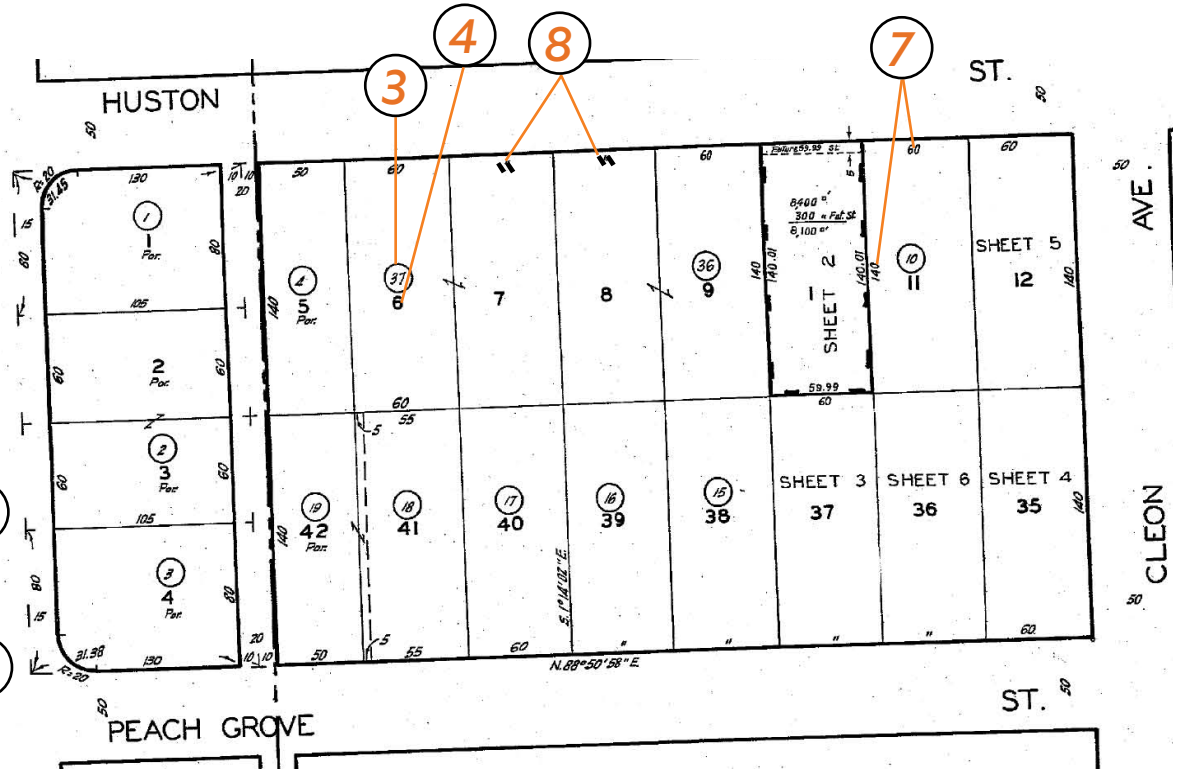
# Plat Map Reference Guide



\*LA and SB Counties have 4 digit Book #'s as in the above "2162". Orange, Riverside and San Diego Counties have 3 digit Book #'s. No. California Counties can vary from 3 to 5 digits.

TRACT NO. 6088

M.B. 72-5



1. ASSESSOR'S BOOK NUMBER
2. PAGE NUMBER OF ASSESSOR'S BOOK
3. ASSESSOR'S PARCEL NUMBER ASSIGNED TO THE SPECIFIC LOT
4. LOT NUMBER
5. TRACT NUMBER
6. RECORDING INFORMATION OF TRACT
7. LOT DIMENSIONS (in feet)
8. INDICATES LOT DIMENSIONS EQUAL TO ADJOINING LOTS

